

# CLASS 1 – LOCAL IMPACT ASSESSMENT

Prepared under the Gaming Machines Act 2001

and

the Gaming Machines Regulation 2019

To accompany an application for an increase

Of ten (10) in the gaming machine threshold

Of

The Macquarie Club Dubbo

Prepared for

The Macquarie Club Dubbo

5th February 2024

## TABLE OF CONTENTS

## EXECUTIVE SUMMARY

### **1. Introduction**

- 1.1 Under the Gaming Machines Act (the Act), certain applications made to the Independent Liquor and Gaming Authority (the Authority) to increase the gaming machine threshold (GMT) of a club need to be accompanied by a Local Impact Assessment (LIA). [The GMT establishes the maximum number of gaming machines that can be kept in a club]. The Authority must be satisfied that the LIA meets specified criteria before it can approve it and that approval is necessary prerequisite to the Authority approving the application for the GMT increase.
- 1.2 Section 33 of the Regulation specifies that, for the Authority to approve an LIA, it must be satisfied that;
  - a. The LIA complies with the requirements of the relevant provisions of the Act and the Gaming Machines Regulation (the Regulation);
  - b. The LIA demonstrates the gambling activities in the relevant venue will be conducted in a responsible manner; and
  - c. In the case of a Class 1 LIA (LIA1) related to an established club, that:-
    - i. The proposed increase in the GMT will provide a positive contribution towards the local community; and
    - ii. The LIA has adequately addressed community concerns arising out of the consultation process required under the Regulation.
- 1.3 Macquarie Club Dubbo (the club), is applying – under Section 34 of the Act to the Authority for approval of a GMT increase of ten (10), ie from 21 to 31.

- 1.4 The club is in the city of Dubbo (SA2 Dubbo - South) which is classified by the Authority, pursuant to Section 33 of the Act as a Band 2 LGA. Because the increase in GMT sought is in the low range of increases as defined in clause 34 of the Regulation, an LIA1 is required to accompany the Club's application.

## **2. The Club's Location and Surroundings**

- 2.1 The club is located on 313 Macquarie Street, South Dubbo approximately 2klm from the Dubbo CBD (See attached map Annexure A).
- 2.2 The area surrounding the club comprises scattered retail development and mostly older style single storey residential dwellings (low to medium density). With the recent rapid growth of Dubbo significant residential estates have sprung up on the South Eastern extremities of South Dubbo not far from the Club.

## **3. The Club**

- 3.1 The land on which the club stands has been occupied by the club since its inception in 1958.
- 3.2 The Club has 1,432 members consisting 148 bowls members and 1,284 social members. Of these members only 56 (3.9%) reside outside the Dubbo postcode (2830). The Club currently has 25 employees.
- 3.3 Outdoor sporting facilities at the Club consist of two bowling greens and two tennis courts.
- 3.4 The club's car park has 50 internal parking spaces (6 disabled). In addition there are 22 external dedicated street spaces. Access to the club's car park is via an entrance Macquarie Street. The clubhouse is a single storey building with a total floor space of approximately 450sqm. The gaming room is approximately 45sqm.
- 3.5 The club has a large lounge bar, TAB, KENO area, a gaming room and other facilities associated with a sporting club. The Club also has a Darts and Pool area.
- 3.6 Dining at the Club consists of a Chinese style restaurant. There is also an outside BBQ area.
- 3.7 Trading hours are Monday 10.00am – 7.00pm, Tuesday – Wednesday 10.00am – 9.00pm, Thursday 10.00am – 10.00pm, Friday 10.00am – 12.00am, Saturday and Sunday 10.00am – 10.00pm.
- 3.8 The Club has an approved Multiple Occasion Extended Trading Authority which authorises it to trade past midnight on up to twelve (12) occasion per year (with approval). On 30 April 2021 a condition was placed on the Club's licence, 'The operation of the gaming machines must cease at midnight on any occasion the Club trades after 12.00 midnight'. This condition still applies and is strictly complied with. The location of the Club (approximately 2km) from the Dubbo CBD does not lend itself to the migration of late night problem gamblers.
- 3.9 The club provides light entertainment (Karaoke) each Friday between 8.30pm and 11.00pm.
- 3.10 Functions such as weddings, wakes and birthday parties are also catered for at the Club.
- 3.11 Over the past two years the Club has enjoyed strong membership growth from 754 to 1,432 (90%). The Board of the Club have developed a strategic plan to attract new members/patrons from all demographics. The Club has a vibrant sporting culture the tennis courts are in use seven days a week. The male and female bowlers enjoy regular competition both local and inter club. Darts and Pool are also both played on a regular basis both local and inter club.
- 3.12 The Chinese restaurant attracts locals as well as tourists who frequent Dubbo to enjoy the many local tourist attractions such as Taronga Western Zoo and the Royal Flying Doctor Service. Many of these tourists stay in the local hotels and motels.

3.13 The Club recently (November 2023) completed a major building upgrade to include an all-weather exterior deck that can accommodate up to 250 additional patrons.

#### **4. The Club's Gaming**

4.1 The club's gaming room is regular in shape of approximately 45 square metres. Attached is a floor plan of the Club showing the proposed location (marked in green) of the additional ten (10) gaming machines should this application be approved.

4.2 The club's GMT is 21. The club currently keeps 21 gaming machines.

4.3 The club's gaming machines are located in the Gaming Room with the following characteristics :-

- The gaming room is physically separated from the general bar area by walls and doors;
- Patrons are not compelled to pass through the gaming room in order to enter or leave the club or in order to gain access to another part of it;
- Entry to the gaming room is free of charge;
- The gaming machines cannot be seen or heard from any place outside the club that is used by the public or to which the public has access.
- All gaming machines are suitably spaced in order to facilitate access; the gaming room is supervised at all times by electronic means and/or the physical presence of the licensee or an employee; and
- The gaming room cannot be accessed directly from a public street.

4.4 The 15.465% increase in Dubbo's population between 2016 and 2021 and the increase in tourism in the local area have resulted in an increase in club patronage. Consequently, at times the current number of gaming machines is insufficient to meet player demand. This results in the club failing to meet the reasonable expectations of those of its members and visitors who wish to play, and that in turn affects its business. The GMT increase sought would assist the club in meeting player demands and should improve its profitability, thereby enabling it to finance further improvements to its premises and/or its operations and also to contribute more to the local community.

#### **5. Competitive Facilities**

5.1 In the City of Dubbo there are ten (10) hotels and five (5) registered clubs with gaming machines.

5.2 The total number of gaming machines in the ten hotels is 217. The total number of gaming machines in the five registered clubs is 339.

#### **6. The Local Community**

6.1 For the purposes of this application, the area being adopted as the local community lives in the City of Dubbo.

6.2 At the 2021 census the population of the local community was 44,963. An increase of 6,020 (15.46%) on the 2016 census total of 38,943.

- i. The percentages of children aged 0-4 was 7.3% (NSW 5.8%).
- ii. The percentages of people aged over 75 years was 7.7% (NSW 7.5%).
- iii. The percentages of people aged over 20 years was 72.7% (NSW 76.1%)

- iv. The ratio of male to female was 48.5% to 51.5% NSW 49.4% to 50.6%.
- v. The percentages of Aboriginal and/or Torres Strait Islander persons was 15.4% (NSW 3.4%)
- vi. The percentages of people born overseas was 18.7% (NSW 24.6%).
- vii. The percentages of people who speak only English was 82.8% (NSW 67.6%).
- viii. The percentages of people who also speak another language was 10.2% (NSW 29.5%).
- ix. The percentages of people with University degrees was 18.7% (NSW 27.8%).
- x. The percentages of people with Certificate III trade qualifications or above was 20.3% (NSW 115.0%).
- xi. The percentages of people in the labour force 63.5% (NSW 58.7%), not in the labour force 28.0% (NSW 35.5%).
- xii. The percentage of low income households (ie less than \$650 per week) was 15.8% (NSW 16.3%).
- xiii. Median weekly incomes for individuals \$874 (NSW \$813) families \$2,48 (NSW \$2,185) household \$1,695 (NSW \$1,829)
- xiv. The percentage of lone person households was 26.6% (NSW 25.0%).
- xv. The percentage of one parent families with dependent children was 18.3% (NSW 15.8%).
- xvi. The percentage of rented accommodation was 33.0% (NSW 32.6%).
- xvii. Housing owned outright 28.4% NSW 31.5%), mortgaged 34.5% (NSW 32.5%).
- xviii. In 2016 (latest data available) the SEIFA score for relative advantaged and disadvantaged was 967 (compared to the state of NSW score of 977). The minimum score being 188 and the maximum score 1186.

## **7. Harm Minimisation and Responsible Gaming**

7.1 Under Clause 37c of the Regulation, details of the harm minimisation and responsible gambling measures that are in place at the club must be provided.

7.2 The Club conducts gaming in the club in compliance with the provisions of the Act and Regulations as well as the policies and guidelines adopted by Clubs NSW. It has a standard arrangement with the Clubs NSW ClubSAFE Gambling Counselling Program if counselling is required.

7.3 Thus, gaming in the club is conducted in accord with the provisions of the Act and Regulation in that:-

- The applicant and all staff involved in gaming duties hold Responsible Conduct of Gambling Certificates. Copies of these certificates are kept on the premises and are available for inspection by relevant authorities.
- The club operates a self exclusion scheme which complies with the provisions of the legislation through Clubs NSW ClubSAFE.
- The club has an arrangement with that organization in relation to the provision of problem gambling counselling and patrons are advised of the *gambling HELP* service.
- Relevant staff members have training in self exclusion and on referral to counselling services.
- All required signage and notices are displayed in conspicuous positions and are maintained.

- Gambling counselling service contact cards are freely available and are on display in the gaming room.
- Player information brochures in accordance with Regulations 19, 20 and 21 of the Gaming Machines Regulation 2019 are readily available in the Club upon request.
- A clock is clearly visible from any gaming machine in the gaming room.
- No ATM is located in the gaming room.
- The club does not provide credit.
- There is a \$5,000 limit on cash payment on winnings, any remaining balance is paid by crossed cheque.
- No cheques are cashed at the club.
- The club does not offer promotional prizes that are indecent or offensive.
- No gambling inducements are offered.
- There is no external advertising of the club's gaming machines.
- The club's gaming machines cannot be seen from outside the club.

7.4 These practices will be maintained.

7.5 The club observes self-exclusions from relevant patrons at the club and those from other premises.

The Club has an extensive 'Gaming Plan of Management' (copy attached).

## **8. Community Benefit.**

8.1 If the application is approved in full the applicant will make the required contributions to the Responsible Gambling Fund over the next five (5) years. This contribution amount will be calculated in accordance with the formula shown in the Independent Liquor & Gaming Authority's 'Class 1 Local Impact Assessment process guidelines'. That being at the rate of 15 percent of the club's current annual average gaming profit machine per machine multiplied by the proposed GMT increase (10) each year for the next 5 years.

## **9. Conclusion.**

9.1 The information in this Class 1 LIA complies with the Authority's Guidelines. In particular it:-

- Addresses the responsible gambling and harm minimisation measures to be undertaken by the club.
- Identifies the local community.
- Provides information to show that a positive contribution will be made to that local community if this LIA is approved and the club's GMT threshold is increased by ten (10).

## **10. Consultation.**

10.1 In accordance with Clause 37 of the regulation, within 2 working days of the application being lodged with the NSW Liquor and Gaming Authority copies of the application and this LIA will be provided to Dubbo Regional Council and to Dubbo Police. Notification of the application will be provided to the Western NSW Local Health District. The organizations in the Dubbo LGA funded by the Responsible Gambling Fund (Lifeline) for the purpose of providing gambling-relates counselling or treatment services will be notified of the application.

Christy White, Manager of Community Services Dubbo Regional Council has advised that the Council's records show that Lifeline Central West provides 'Gambling and Financial Counselling Services' in the Dubbo area.

In addition an advertisement will be placed in a local newspaper in the prescribed format and a notice will be placed on display in a conspicuous location outside the club.

10.2 All notifications and the advertisement will outline and explain the nature of the application, that this LIA accompanies it, that the application and this LIA may be inspected on the NSW Liquor and Gaming website and

that any person may make a submission to NSW Liquor and Gaming in relation to the application within 60 days of the date specified on the advertisement or in the notice.

10.3 If NSW Liquor and Gaming forwards any submissions it may receive to the applicant endeavours will be made to resolve any relevant concerns that may be raised.

See attached documents.

- Map of local area showing location of the Macquarie Club Dubbo.
- Existing floor plan and proposed floor plan of Macquarie Club Dubbo premises showing proposed location of ten (10) additional machines (marked in green) should this application be approved.
- An aerial view of Macquarie Club Dubbo.
- Gaming Plan of Management for Macquarie Club Dubbo.
- Current 'Key liquor licence details recorded as at 5 April 2023'.







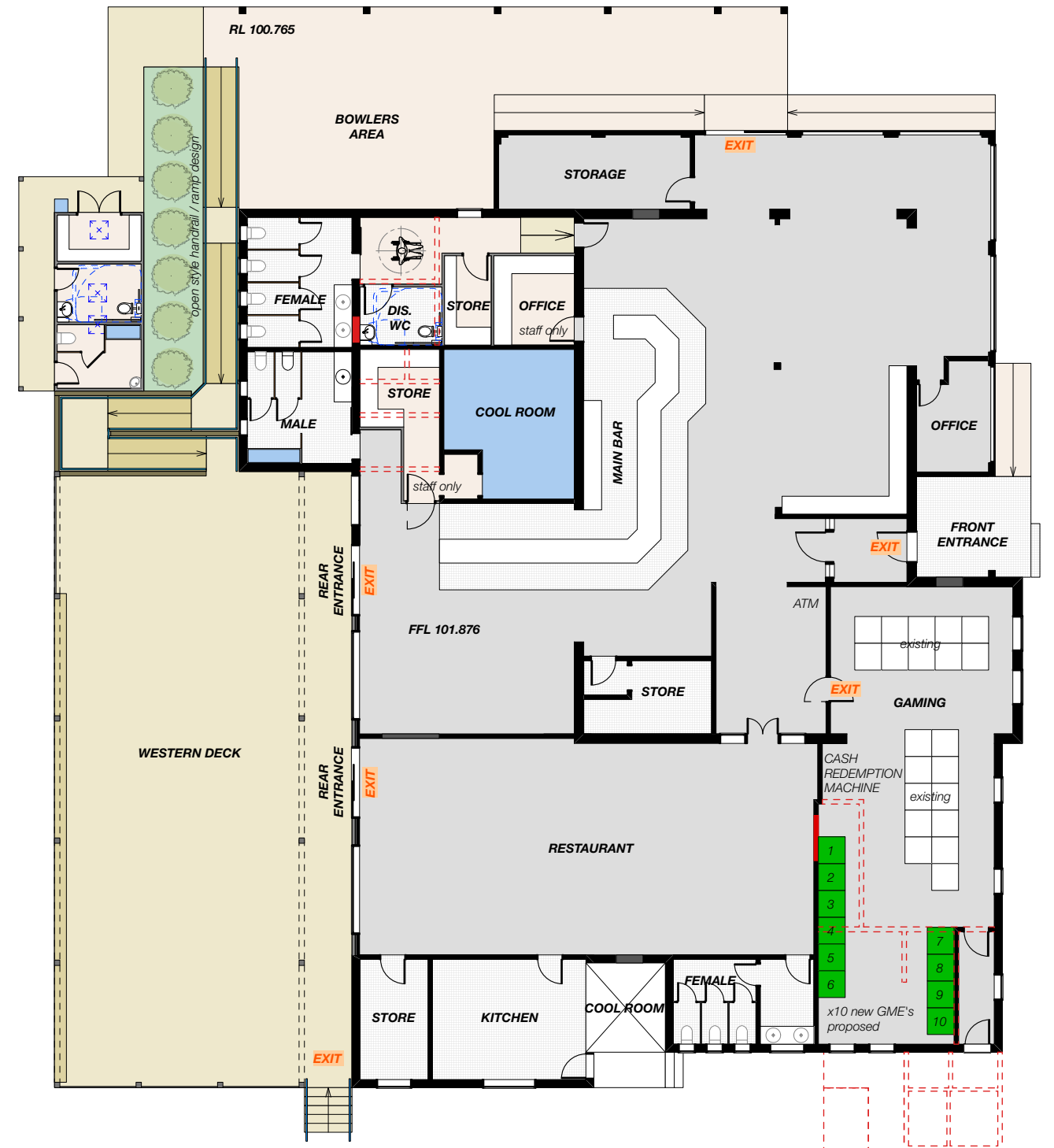






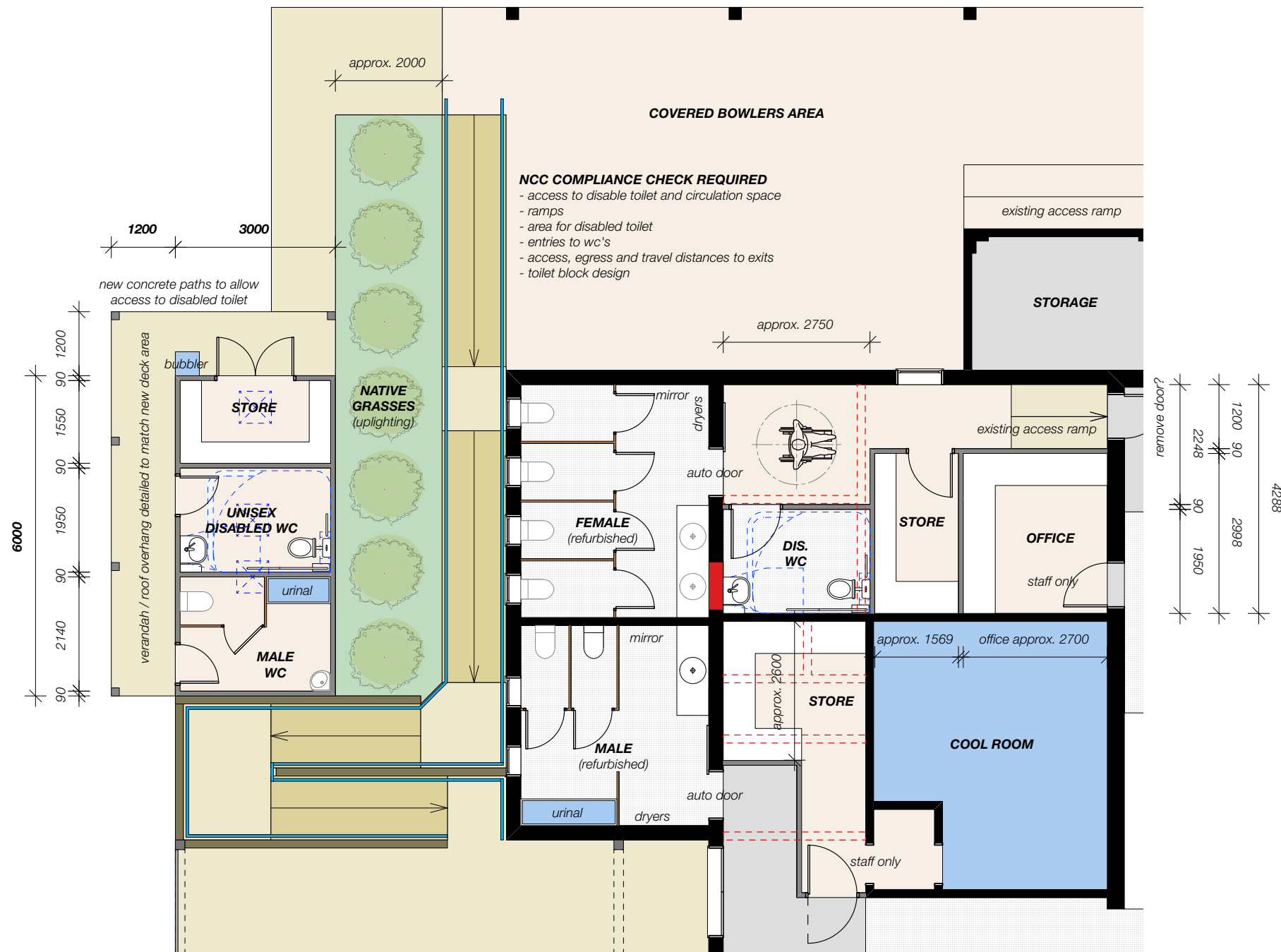
**EXISTING FLOOR PLAN**  
1:200 @ A3

**EXISTING AREA**  
CLUB GFA = 709 m2  
COVERED BOWLERS AREA = 102m2  
DECK AREA = 207m2

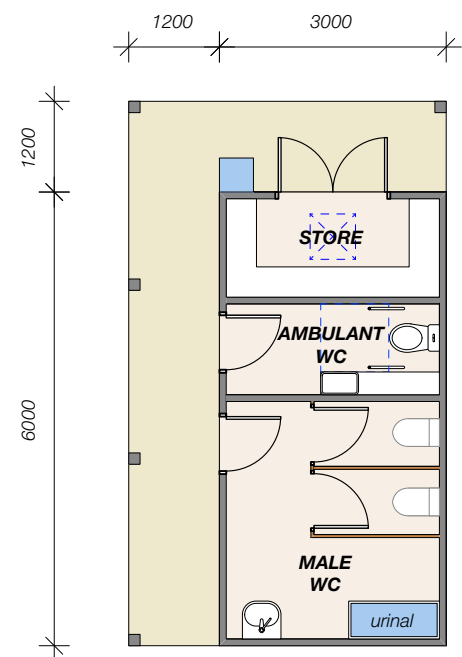


**PROPOSED FLOOR PLAN**  
1:200 @ A3

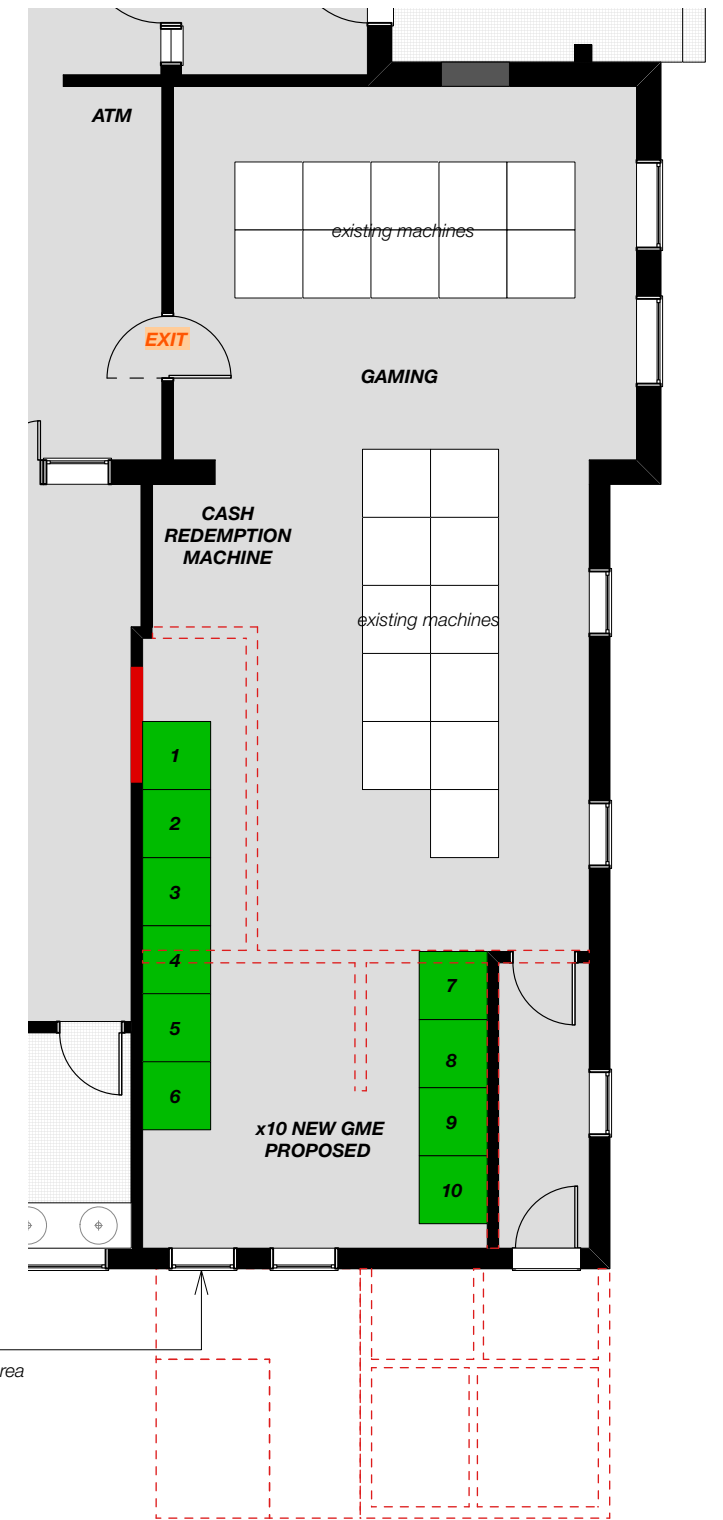




**PROPOSED FLOOR PLAN - TOILETS / OFFICE**  
1:100 @ A3



**PROPOSED TOILET BLOCK OPTION FOR DISCUSSION**  
1:100 @ A3



**PROPOSED FLOOR PLAN - GAMING**  
1:100 @ A3

