



**DESIGN COLLABORATIVE**  
**Pty Limited**

ABN 36 002 126 954  
ACN 002 126 954

Town Planning and Liquor Licensing Consultants

[www.designcollaborative.com.au](http://www.designcollaborative.com.au)

**Managing Director**

J Lidis  
BTP (UNSW)  
MPIA

**Director**

David Rippingill  
BEP (WSU)  
Juris Doctor (UNE)  
RPIA

**Consultant**

G W Smith  
BSurv (QLD)  
MCP (MIT)  
MPIA (Life Fellow)  
MIS Aust  
MRTPI  
FAPI

# **CLASS 1 LOCAL IMPACT ASSESSMENT**

TO ACCOMPANY AN APPLICATION TO INCREASE THE  
GAMING MACHINE THRESHOLD AT

THE MARSDEN BREWHOUSE  
1 HAWTHORNE AVENUE,  
MARSDEN PARK NSW 2765

PREPARED FOR THE APPLICANT  
**WAYNE ANDREW MACDONALD**  
LICENSEE

**BY G W SMITH**

JUNE 2019  
REF: 160776.9LIA

# CONTENTS

|                                                                        |           |
|------------------------------------------------------------------------|-----------|
| <b>EXECUTIVE SUMMARY .....</b>                                         | <b>3</b>  |
| <b>1. THE MARSDEN BREWHOUSE.....</b>                                   | <b>5</b>  |
| <b>2. SURROUNDING DEVELOPMENT &amp; LOCAL COMMUNITY..</b>              | <b>7</b>  |
| <b>3. THE BROADER COMMUNITY.....</b>                                   | <b>8</b>  |
| <b>4. INFORMATION ABOUT THE RIVERSTONE-MARSDEN<br/>PARK SA2.....</b>   | <b>9</b>  |
| <b>5. HARM MINIMISATION AND RESPONSIBLE GAMBLING<br/>MEASURES.....</b> | <b>12</b> |
| <b>6. COMMUNITY BENEFITS .....</b>                                     | <b>15</b> |
| <b>7. CONSULTATION.....</b>                                            | <b>17</b> |

## ATTACHMENTS

|                      |                                                                                                 |
|----------------------|-------------------------------------------------------------------------------------------------|
| <b>APPENDIX A</b>    | STREET MAP SHOWING THE LOCATION OF THE MARSDEN BREWHOUSE TOGETHER WITH A 2019 AERIAL PHOTOGRAPH |
| <b>APPENDIX B</b>    | ZONING PLAN OF THE MARSDEN PARK INDUSTRIAL PRECINCT, A PART OF THE NW SECTOR                    |
| <b>APPENDIX C</b>    | PLANS OF HOTEL APPROVED BY COUNCIL                                                              |
| <b>APPENDIX D</b>    | HOTEL LICENCE                                                                                   |
| <b>APPENDIX E</b>    | PLAN OF GAMING AREA                                                                             |
| <b>APPENDIX F</b>    | NEARMAP IMAGES TAKEN IN 2016 & 2019 SHOWING GROWTH AROUND THE BREWHOUSE                         |
| <b>APPENDIX G</b>    | PLAN OF THE RIVERSTONE-MARDEN PARK SA2 SHOWING THE STATE SUBURBS WITH ISRADS                    |
| <b>APPENDIX H</b>    | 2016 QUICKSTATS FOR THE RIVERSTONE-MARSDEN PARK SA2                                             |
| <b>APPENDIX I</b>    | 2016 QUICKSTATS FOR NSW                                                                         |
| <b>PLAN 160776/1</b> | EXTRACT FROM THE INTERACTIVE MAP OF SA2S                                                        |

The SA2 had a population of 17,100 at the 2016 Census. The Australian Bureau of Statistics estimates that 8,000 people were added to the population of the Riverstone-Marsden Park SA2 between 30 June 2016 and 30 June 2018. Development has continued at a rapid rate over the past year so that it is reasonable to estimate its present population being the order of 28,000 to 30,000. Much of that growth is occurring in housing estates near the Brewhouse.

In 2016, the SA2 has an ISRAD of 7 but those of suburbs in it range from 4 to 10. It is expected that the ISRAD of the newly developing areas near the Brewhouse will be similar to those of other recently developed suburbs in the SA2 which are high. Details of the population characteristics of the population of the SA2 in 2016 are set out in Part 4 of this LIA.

The harm minimisation measures which the Applicant has implemented are set out in Part 5. The gaming room complies with Clause 8 of the *Gaming Machine Regulation 2010*.

The establishment of the Brewhouse, which has proven to be very popular, already provides considerable benefit to the local community as the place where residents and workers can meet and form acquaintances and friendships which will underpin the social capital of their developing community. There is no other place in Marsden Park which could provide a similar capability.

In addition, the Applicant is prepared to donate to the Responsible Gambling Fund. The amount of that the donation has been based on that required by ILGA when it granted the initial application for an increase in the Brewhouse's gaming machine threshold.

The provision of additional gaming machines in the Brewhouse will underpin the significant investment that been made in its construction and the high standard of the operation of its bar and restaurant facilities, brewery and function spaces.

## 1. THE MARSDEN BREWHOUSE

- 1.1. The Marsden Brewhouse (*Brewhouse*) stands on a 1.5 hectare site on the southwest corner of Hawthorne Avenue and Richmond Road, Marsden Park. **Appendix A** contains a plan and recent aerial photos showing its location and illustrating the surrounding development which consists of industrial and residential developments with large areas yet to be developed. **Appendix B** contains a zoning map of the Marsden Park Industrial Precinct as well as a plan of other urban release areas nearby, which are planned to house over 70,000 people while the Precinct around the hotel, has the capacity to accommodate 10,000 workers.
- 1.2. Consent was granted by a Joint Regional Planning Panel on 17 August 2017, under JRPP-16-03328, for the construction of what is now the Brewhouse. **Appendix C** contains the plans of the hotel stamped as approved by Blacktown City Council
- 1.3. A hotel licence with an extended trading authorisation was granted to the hotel by ILGA on 24 October 2018. The Brewhouse opened on 4 April 2019. **Appendix D** contains its hotel licence.
- 1.4. ILGA approved an application for a gaming machine threshold of 20 for the Brewhouse on 17 April 2019. The Brewhouse will have the 20 gaming machines installed in it shortly, it currently having 18.
- 1.5. The Brewhouse has a maximum capacity of 2,000 persons and parking spaces for 256 vehicles. It includes a brewery for which a producer/wholesaler licence has been granted. The project cost some \$48 million to develop .
- 1.6. The building's gross floor area is 2,823 square metres of which 1,419 square metres is designated for drinking and dining. The gaming room has an area of 139 square metres (which is not included in that gross floor area because it is not fully enclosed by walls) at the main floor level. Some 750 square metres, on a mezzanine level, is set aside for functions. The balance of the floor is occupied by back-of-house facilities and the brewery. **Appendix E** contains a plan of the gaming area.
- 1.7. The gaming area has its own food and beverage bar and sanitary facilities and has been designed to permit smoking. It is a separate area off the main bar with its own access, by lift, from the carpark below as well as from the main bar.
- 1.8. Food is available at all times the Brewhouse is open in the dining and bar areas and in the gaming area. The function rooms have their own kitchen on the mezzanine level. The Brewhouse has a comprehensive CCTV system and security personnel patrol the premises and its car park. It operates in accord with a Venue Management Plan agreed with the Mt Druitt Patrol Area Command, in accordance with condition 14.7.7 of JRPP-16-03328.

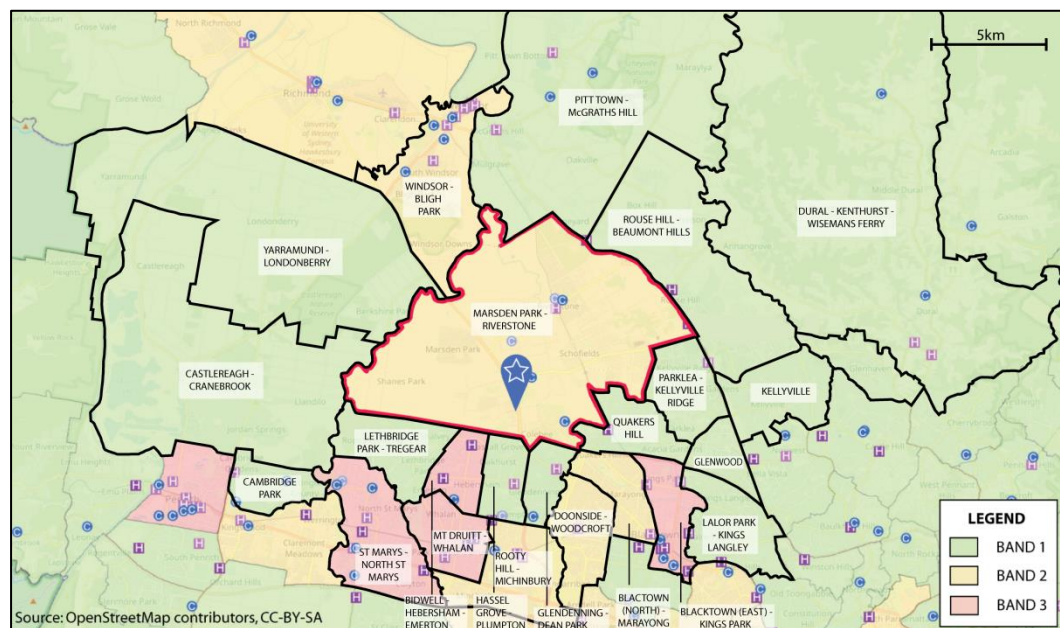
- 1.9. The Brewhouse's current gaming machine threshold is 20 and the licensee is seeking an increase in its gaming machine threshold of 10 to 30, the maximum possible.
- 1.10. The Brewhouse provides TAB and Keno facilities outside the gaming area.
- 1.11. The approved trading hours are 10am to 3am the following day, Monday to Saturday, with a 2am lockout, and 10am to midnight, Sunday.

## 2. SURROUNDING DEVELOPMENT & LOCAL COMMUNITY

- 2.1 The Brewhouse is located in the Sydney Business Park which occupies a large part of the Marsden Park Industrial Precinct. Businesses established in the Park include industries, warehouses and distribution centres (for companies such as Lindt, Asic, Dulux, Linfox, Toll and Austreo) as well as bulky goods retailers, such as Ikea and Bunnings, and many smaller establishments. West of the Park, Lindt Chocolates has established its Australian distribution centre. New entrants are arriving continuously. Older industries nearby include a large brickworks and a waste disposal depot.
- 2.2 There are five areas of residential areas nearby which are the forerunners to the planned Marsden Park community. They are:
- a) Colebee, which lies about a kilometre to the south, which has developed since 2012, which had a population of 1,931 at the 2016 Census and which is still expanding;
  - b) The Grange Estate (which lies diagonally across the intersection of Hawthorne Avenue and Richmond Road) is a medium density residential estate which has developed since the 2016 Census. It now contains a mixture of cottages on small lots, terrace housing and laneway housing. Construction is nearing completion;
  - c) Elara, located about two kilometres to the north, is planned to contain 4,200 lots of which about 2,000 have been created, mainly, since the 2016 Census and where the building of homes is progressing rapidly; and
  - d) Residential development is also spreading west from around the Schofields railway station so that it is now within a couple of kilometres of the Brewhouse. The former Schofields airfield is also being developed for housing and West Schofields has been released for development. These areas lie 3.5 to 5 kms from the Brewhouse.
- 2.3 In addition, there are older rural residential houses and a retirement village of some 250 units (formerly a transportable homes estate) where sales commenced in 2015, in the general area.
- 2.4 **Appendix F** contains aerial photographs taken in July 2016 (just before the 2016 Census) and in April 2019 which show the growth of these areas.
- 2.5 These areas constitute the *local community* for the purposes of the *Gaming Machine Act 2010*.
- 2.6 There is no school, place of public worship or hospital within 200 metres of the Brewhouse. The nearest such establishment is the Al-Masjid Bait-Ul Huda Mosque which is some 1.5 kilometres to the south. Because of this, no map showing such establishments within 200 metres is included with this Assessment.

### 3. THE BROADER COMMUNITY

- 3.1. In line with recently introduced amendments to the Gaming Machines Act, the broader community is taken to be the Statistical Area 2 (SA2) in which it is located.
- 3.2. The Brewhouse is located in the SA2 known as Riverstone-Marsden Park. **Plan 160776/1** shows its extent together with those of other SA2s within five kilometres of the perimeter of that SA2. The Riverstone-Marsden Park SA2 (*the SA2*) extends beyond the area that the Brewhouse is expected to serve.
- 3.3. At present, there is no real community living near the Brewhouse. Most of those who live near it have moved into the area recently and that is likely to continue to be the situation for a number of years. In addition, the current residents and those who move into Marsden Park in the next few years, at least, will be scattered across isolated estates which are separated by tracts of rural land.
- 3.4. One public benefit of establishing the Brewhouse will be the provision of a meeting place where new residents from these estates can meet and socialise, thereby building the social capital of the new community.



**Plan160776/1: Location of Riverstone-Marsden Park SA2**

#### 4. INFORMATION ABOUT THE RIVERSTONE-MARSDEN PARK SA2

- 4.1. In 2016, the Riverstone-Marsden Park SA2 (SA2) had a population of 17,312. Its ISRAD was 1043, placing it in the 7<sup>th</sup> decile, although parts of it, such as the State Suburbs of Colebee, were placed in the 10<sup>th</sup> decile while Schofields was in the 9<sup>th</sup>, Riverstone in the 5<sup>th</sup> and Marsden Park in the 4<sup>th</sup>. **Appendix G** contains a plan showing the State Suburbs in the SA2 together with their ISRADs. The adjoining State Suburb of The Ponds had an ISRAD which placed it in decile 10 as did Rouse Hill which lies further to the east.
- 4.2. The total number of gaming machines in the SA2 is 218 spread between two hotel and five clubs of which two have no machines. That will increase to 220 shortly when the Brewhouse installs the last two machines to fulfil its gaming machine threshold.
- 4.3. The SA2 is ranked in Band 2.
- 4.4. **Appendix H** contains a full print-out of the 2016 Quickstats for the SA2. **Appendix I** is a comparable print-out for NSW. The specific matters raised in the Guidelines which are set out below are based on the 2016 Census results. However, it must be appreciated that the SA2's population increased by 50% between 30 June 2016 and 30 June 2018 so that the characteristics displayed in 2016 have probably changed and may no longer represent the current situation.
- a) About 73.6% of the SA2's population (or 12,700 persons) was aged 18 or over compared to 78% in NSW's population;
  - b) The SA2's population has grown, and continues to grow, rapidly as it is part of one of Sydney's major growth areas and is planned to house well over 100,000 people;
  - c) In 2016, the median age of the population was 33 compared to 38 in NSW and 50.6% of the population were males compared to 49.3% in NSW. Details of its age and sex structure are provided in **Appendix H**;
  - d) The educational levels achieved by the SA2's population appear to be slightly lower than in NSW. This can be seen by comparing the Levels of Educational Achievement tables in **Appendices H** and **I**. That may be due to the SA2 encompassing the older 'blue collar' suburbs of Riverstone and Schofields as well as a rural population;
  - e) The SA2's workforce contained lower proportions in professional and managerial positions than NSW's. It also contained a slightly lower proportion of labourers but higher proportions engaged as clerical and administrative workers and technicians and trade workers. Details of the occupation of the workforce appear in **Appendix H**;
  - f) Taking country of birth as a measure of ethnicity, the SA2's population contained 63.7% who were born in Australia compared to 65.5% in NSW's. It had a lower percentage of persons both of whose parents were born overseas than NSW did. The overseas countries recorded as places of



birth in the SA2 were dominated by India (7.2%) followed by Philippines (3.1%) and England (1.9%);

- g) Median weekly personnel income in the SA2 was \$770 compared to \$664 in NSW. Median weekly household income was \$1,927 compared to \$1,486 in NSW. In the SA2, 13.1% of households reported gross weekly incomes of less than \$650 whereas, in NSW, the figure was 19.7%;
- h) In the SA2, 66.1% of the labour force over the age of 15 reported working full-time and 24.2%, part-time. The comparable figures for NSW were 59.2% and 29.7%. The unemployment level in the SA2 was 5.3% compared to 6.3% in NSW. There were 8,431 persons in the SA2's population, including persons under the age of 15, (or 48.7%) who were not in the labour force of the SA2. The comparable percentage in NSW was 51.8%;
- i) Median weekly rent in the SA2 was \$420 compared to \$380 in NSW. Median monthly mortgage repayment in the SA2 was \$2,600 compared to \$1,986 in NSW;
- j) In the SA2, 24.9% of occupied private dwellings were owned outright, 44.2% were owned with a mortgage and 26.9% were rented. The comparable figures for NSW were 32.2%, 32.3% and 31.8%, respectively. The ownership figures reflect the fact that the SA2's housing stock contains many recently constructed dwellings. The following table, extracted from the Community Profiles for the SA2 and NSW, produced by the ABS from the 2016 Census, sets out landlord types, as percentages of the total housing stocks.

| Landlord type                      | SA2  | NSW  |
|------------------------------------|------|------|
| Real estate agent                  | 18.3 | 19.9 |
| State housing authority            | 2.0  | 4.0  |
| Person not in the same household   | 3.8  | 5.6  |
| Housing co-op, community or church | 0.5  | 0.7  |
| Other                              | 2.0  | 1.5  |

(The houses rented from the State housing authority in the SA2 are located in Riverstone, some 6 -7 kilometres from the Brewhouse.)

- k) Taking '*household type*'; to be the equivalent of '*household composition*', the following table sets out a comparison between the SA2 and NSW in percentages of household compositions.

| Composition                        | SA2  | NSW  |
|------------------------------------|------|------|
| Family households                  | 82.4 | 72.0 |
| Single (or lone) person households | 15.4 | 23.8 |
| Group households                   | 2.2  | 4.2  |

- 4.5. To summarise these data, the SA2 covers a number of suburbs, some of which are old established areas, some of which are still, essentially, rural and an increasing number of recently established 'suburbs'. Housing development in the SA2 is progressing rapidly. Practically all of the SA2 is planned to be urbanised with development ranging from cottages to fairly high density apartments in

areas close to railway stations, among which is Cudgegong Road at the outer end of the Sydney Metro North West, as well as a substantial employment area.

- 4.6. At the time of the 2016 Census, the SA2 had a young population due to the new housing estates attracting first home buyers with families. Incomes were higher than in NSW but the workforce contained fewer professionals and managers and its educational achievements were also lower. Unemployment was lower than in NSW and more of the labour force was in full-time employment but a lower percentage was in part-time employment than in NSW. Workforce participation was lower than in NSW due to the higher percentage of children in the population.
- 4.7. Indian-born persons were the most prominent ethnic group although, among the residents who have lived in Marsden Park for many years, there was a significant proportion of Maltese descent.
- 4.8. Housing costs were higher than in NSW because the SA2 is part of the Sydney metropolitan area and because of the higher proportion of new homes in the housing stock. That is reflected in the higher percentage of homes with mortgages.
- 4.9. The Brewhouse is situated in a part of the SA2 which will be developed with new housing and new employment establishments. Consequently, it will be in an area of where, as it develops, the SEIFA score is likely to be high.

## **5. HARM MINIMISATION AND RESPONSIBLE GAMBLING MEASURES**

- 5.1. The harm minimisation strategies which the applicant has implemented include all those required by legislation plus some additional measures. The former are listed in 5.2 below and the latter in 5.3.
- 5.2. Mandatory harm minimisation measures which must be implemented are:
- a) Minors are not permitted in the gaming area; (*Sec 50*)
  - b) All employees involved in gaming-related duties hold recognised responsible conduct of gambling and responsible service of alcohol qualifications; (*Reg.59*)
  - c) An arrangement has been established with GameCare in relation to the provision of gambling counselling services; (*Sec. 46*)
  - d) Players are advised of the availability of the Gambling HELP service; (*Regs. 27& 52*)
  - e) An arrangement has been made with GameCare to offer its Multi-Venue Self-Exclusion Scheme (MVSE) to players at the hotel and players are advised of the Scheme's availability and about how to access it; (*Sec. 49 & Reg. 53*)
  - f) Gambling counselling service and self-exclusion contact cards are attached to each bank of gaming machines in positions where they can be clearly seen by players; (*Reg.25*)
  - g) All required signage and notices, including about chances of winning, gambling warning and problem gambling, are displayed in conspicuous places in the gaming area and on each gaming machine; (*Regs. 21 & 25*)
  - h) Player information (such as signs, notices, cards and the like) which has been approved by the ILGA are available in the gaming area;
  - i) Player information brochures in English and relevant foreign languages are available in the gaming area; (*Regs. 22, 23 & 24*)
  - j) Player activity statements under any player reward scheme are available on request in accordance with the Regulation; (*Reg.48*)
  - k) The Brewhouse does not provide credit;
  - l) There will be a limit of \$2,000 on cash payments for winnings. Payments in excess of that amount are made by crossed cheque or electronic funds transfer. (*Reg. 30*) Such cheques are clearly identified as prize winning cheques; (*Sec. 47B*)
  - m) The Brewhouse does not cash cheques; (*Reg.29*)
  - n) The Brewhouse does not offer promotional prizes which are indecent or offensive; (*Sec. 45*)
  - o) The Brewhouse does not offer inducements to gaming (*Sec. 47*) but may operate a player reward scheme in accordance with *Sec. 45*;
  - p) The presence of gaming machines in the Brewhouse is not be made known outside the licensed premises; (*Secs. 43 &44*)

- q) Signs are displayed at the entrances advising of the availability of Gambling HELP; (*Reg. 26*)
- r) Signs are displayed on each ATM, EFPOS and cash-back terminal advising of the availability of Gambling HELP and of player activity statements; (*Reg. 27*)
- s) If the Brewhouse operates a player reward scheme, it will not disclose information about player activity statements or players other in accordance with *Secs.45A* and *45B*; and
- t) The applicant will abide by any industry codes of practice issued by the Minister; (*Sec.48*)

5.3. The applicant has instituted the following additional measures for harm minimisation:

- a) The Brewhouse conforms to policies adopted by AHA NSW in relation to gaming;
- b) The Brewhouse will contribute to the formulation of any relevant policies on gaming by the local liquor accord and will abide by its adopted policies;
- c) Employees of the Brewhouse are not permitted to play gaming machines while on duty;
- d) All employees involved in gaming-related duties will be trained in:
  - a) the recognition of the signs of gambling problems;
  - b) ways of approaching players who appear to be exhibiting signs of gambling problems in order to offer help;
  - c) how to refer players to counselling services and/or self-exclusion;
  - d) preventing self-excluded persons from being in the gaming room; and
  - e) procedures for ensuring the gaming room remains compliant with the requirements of the legislation in relation to signage;
- e) The licensee will ensure that all employees involved in gaming-related duties at the Brewhouse attend regular briefings, provided by the applicant, which will address all aspects of harm minimisation and any changes in the legislation, the policies of AHA NSW or the local liquor accord relating to gaming. These briefings will, where considered desirable, be given by a person with expertise in that field. These briefings shall be held, at least, twice each year;
- f) The licensee maintains a register in which daily, weekly and monthly compliance checks of all harm minimisation material are noted in order to ensure compliance with the mandatory requirements;
- g) The maximum bet per spin on any machine is limited to \$25; (*Reg.15 sets the limit at \$100*)
- h) The availability of player activity statements is advertised by notices in the gaming room;

- i) The applicant uses all reasonable endeavours to employ staff who are fluent in foreign languages spoken by appreciable numbers of players to work in the gaming room.

5.4 In addition to these on-going harm minimisation measures, the gaming area:

- a) is separated from the balance of the licensed premises; (*Reg. 8*)
- b) is located so as not to require any one to pass through it in order to reach any other part of the Brewhouse or to enter or leave it; (*Reg. 8*)
- c) is not accessible directly from a public street; (*Reg. 8*)
- d) is supervised at all times it is accessible to the public; (*Reg. 8*)
- e) may be entered free-of-charge; (*Reg.8*)
- f) has all gaming machines suitably spaced; (*Reg.8*)
- g) has a clock, in good working order, visible from all seated positions in the gaming room; (*Reg. 28*)
- h) does not contain any ATM, EFPOS terminal or similar device that dispenses cash from a credit card account; (*Sec. 47 & Reg. 32*)
- i) in addition to the bar and sanitary facilities specifically for the gaming area, access is available to alternate facilities in the Brewhouse at all times the gaming area is operating; (*Reg. 8*)
- j) is shut down between the hours of 3am and 10am, Tuesday to Sunday, and midnight and 10am, Monday; and
- k) permits smoking.

## **6. COMMUNITY BENEFITS**

- 6.1. Being a newly established venue in a community which is in the very early stages of development, the Brewhouse has no history of providing sponsorships or other forms of support to organisations in the area.
- 6.2. The Brewhouse provides a substantial benefit to that community by providing it with a place which is open to all who meet its behavioural standards. As such, it is a place where people – residents and workers – meet and greet others in the community and form acquaintances and friendships which underpin the social capital of the developing community. There is no other place in the community where that can happen because the only other hotel in the SA2 is some 6 kilometres away in the long established suburb of Riverstone.
- 6.3. There are three clubs in the SA2, west of the Richmond railway line, and two in Riverstone. Those close to the Brewhouse are the Stonecutters Ridge Golf Club in Colebee, and Centro Sociale Italino and the Hamrum Association, each of which is in the western part of Schofields. None of them is open to the public at large and two are only open at limited times. One does not keep gaming machines.
- 6.4. The licensee will foster and supports the establishment of ‘*social clubs*’ under its auspices to encourage various activities in the community which will provide positive contributions to the community through the creation of social capital.
- 6.5. The Act requires that ILGA be satisfied that approving the gaming machine threshold being sought will make a positive contribution to the local community. As noted above, the establishment of the Brewhouse will make a positive contribution to the local community by contributing to its social capital in various ways. However, in order to justify the expenditure of \$48 million which its development entailed, revenue from gaming machines is required. That revenue will also assist in ensuring that the Brewhouse will maintain the high standards for which the Laundry Hotel Group strives.
- 6.6. The Act requires that, if a hotel is required to make a financial contribution in order to satisfy ILGA that the gaming machine threshold sought will make a positive contribution to the community, it must make that contribution to the Responsible Gaming Fund (*Fund*).
- 6.7. When ILGA granted the application which established a gaming machine threshold for the Brewhouse, it imposed conditions requiring payments to the Fund as follows:
  - i. *The venue is to make a financial contribution of \$2,630,385 to be paid in five instalments to the Responsible Gambling Fund (RGF).*
  - ii. *The first instalment is to be paid within 28 days of grant of the application with following instalments due annually thereafter.*

- iii. *The first instalment is to be 10% of the total (\$263,038.50), the second 15% (\$394,557.75), the third 20% (\$526,077.00) the forth 25% (\$657,596.25) and the fifth and final 30% (\$789,115.50)*
  - iv. *Two years after grant the applicant may request that the financial contribution be recalculated to be 15% of the average annual profit per gaming machine operated by the venue, multiplied by the GMT increase granted, multiplied by five, LESS any payments made in years 1 and 2, with any remaining balance then to be paid annually, in equal instalments over the remaining 3 years.*
- 6.8. On the basis that this LIA accompanies an application which seeks an increase in the Brewhouse's gaming machine threshold of 10, compared to the increase of 20 in the application granted, the Applicant anticipates that it will be required to contribute 50% of the financial contribution required as a condition of that grant if the application which this LIA accompanies is granted.
- 6.9 The Applicant thus offers to make a total contribution of \$1,315,188, payable over five years, on the same bases as apply to the payment of the original contribution to the Fund.

## 7. CONSULTATION

- 7.1. Before the application was lodged with Liquor and Gaming NSW, a notice was posted at the site and an advertisement placed in '*The Sydney Morning Herald*', there being no local paper which circulates in Marsden Park following the closure of the '*Blacktown City Sun*'.
- 7.2. Within the same period, copies of the application and this LIA will be provided to the Blacktown City Council and the Mt Druitt Patrol Area Command of the NSW Police Force.
- 7.3. Notification that the application has been sent to the NSW Council of Social Service and the Western Sydney Local Health District.
- 7.4. There are two organisations in the Blacktown Local Government Area which may receive funding from the Fund. They are:
  - a) CatholicCare Social Services, 51 Allawah Street, Blacktown; and
  - b) CatholicCare, 58 Orwell Street, Blacktown.

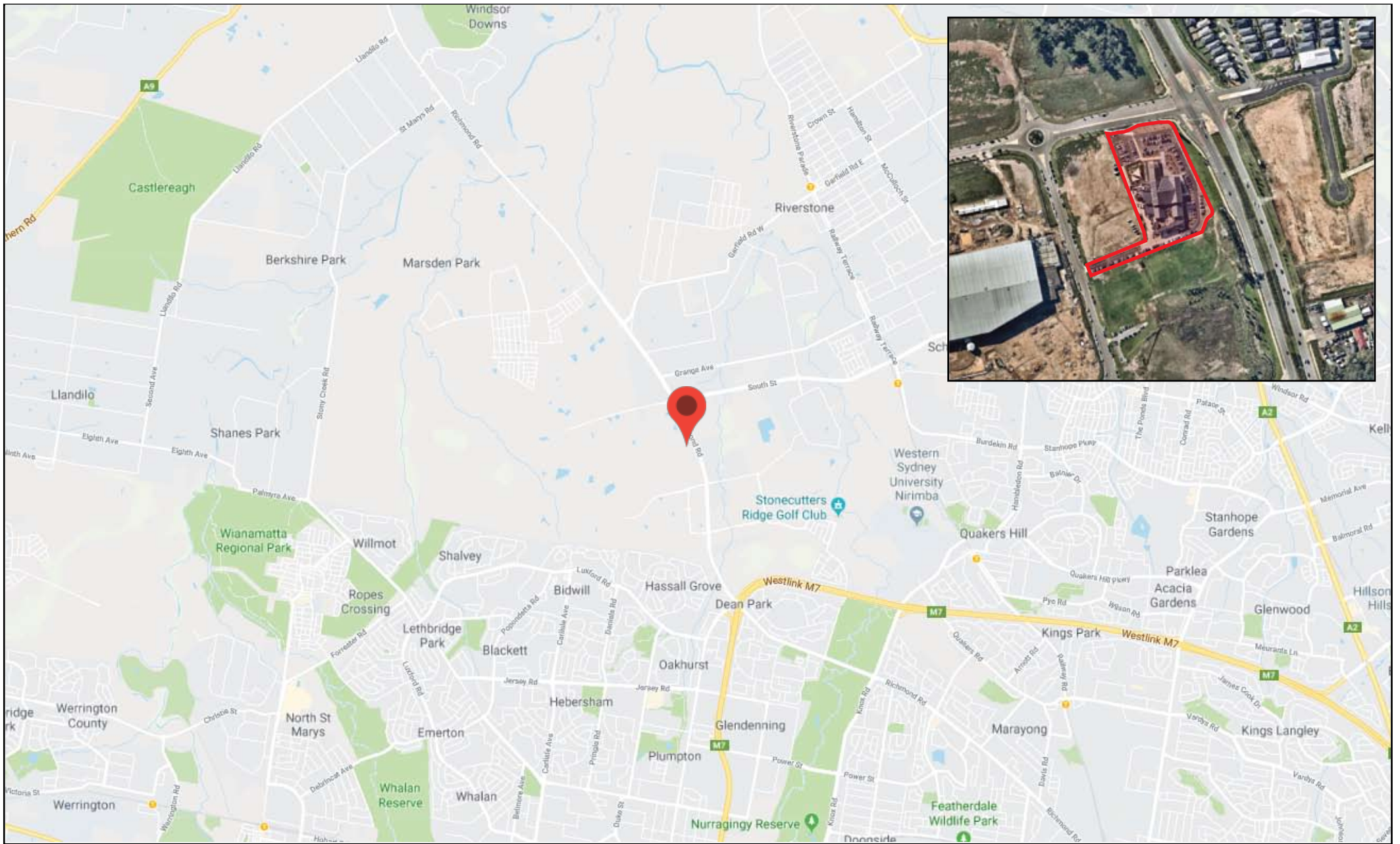
However a number of other organisations which may be funded also service the Blacktown Local Government Area. They are:

- a) CatholicCare at 2 Villers Street, Parramatta; 522 Windsor Road, Baulkham Hills and 163 Macquarie Road, Springwood;
- b) The University of Sydney Problem Treatment Centre at 20 Macquarie Street, Parramatta;
- c) Wesley Mission Legal Service; and
- d) Multi-Cultural Problem Gambling Services.

Each of these has been notified.

- 7.5. Any organisation that provides services in the City of Blacktown relating to welfare, emergency relief, financial assistance, Aboriginal health and legal assistance, or gambling and addiction counselling or treatment and which are listed as providing these services by the Blacktown City Council is required to be notified. However, the Council has no list of such organisations. (The Council's '*Local Directory*' lists only sporting and recreational organisations, social organisations, accommodation, attractions and shopping centres.) Consequently, no such organisations were notified.
- 7.6. The organisations provided with the documents or advised of the making of the application have been informed that they have 60 calendar days after the date the application is posted on the Liquor and Gaming NSW website to make a submission to ILGA.

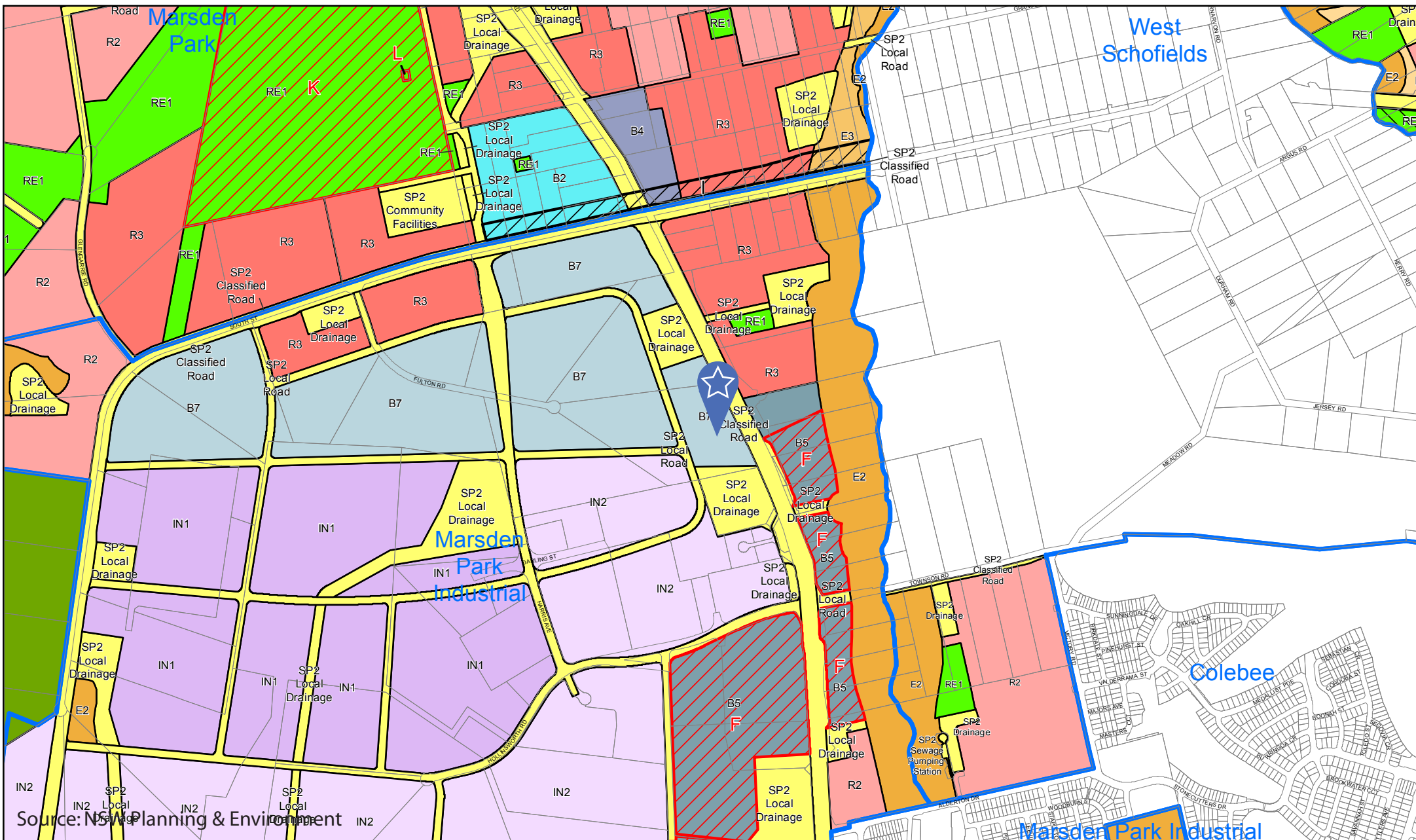




**Design Collaborative**  
 Suite 304 / 105 Pitt St Sydney  
 Ph: 9262 3200  
 Fax: 9262 3601

## APPENDIX A LOCATION MAP





**Design Collaborative**

304 /105 Pitt St Sydney

Ph: 9262 3200

Fax: 9262 3601

## APPENDIX B LAND ZONING MAP (NORTH WEST GROWTH CENTRE)



## **EXECUTIVE SUMMARY**

This Class 1 Local Impact Assessment (*LIA*) accompanies an application which seeks an increase in the gaming machine threshold of 10 (to 30) for the Marsden Brewhouse (*Brewhouse*) located at 1 Hawthorne Avenue, Marsden Park, on the corner of that Avenue and Richmond Road.

The Brewhouse opened for trade on 4 April 2019.

The Independent Liquor and Gaming Authority (*ILGA*) granted an application to increase the Brewhouse's gaming machine threshold from 0 to 20 on 17 April 2019.

The Brewhouse is located in the Marsden Park Industrial Precinct, an urban release area in the North-West Growth Sector. The Precinct is zoned to permit 1,000 homes and to provide employment for up to 10,000 workers. The adjoining Marsden Park Release Area are intended to provide sites for some 10,000 homes and other release areas nearby will add another 10,000 or more homes on what is now, largely, rural land.

The Brewhouse stands in the Sydney Business Park which is developing with a variety of industrial and commercial projects. There are new residential estates nearby along Richmond Road including Colebee, Grange Estate and Elara. While development in Colebee commenced about 2012, the other developments have commenced in the last two to three years.

There is no school, place of worship or hospital within 200 metres of the Brewhouse and the nearest house is about 200 metres away in the Grange Estate.

The Brewhouse cost some \$48 million to develop. It occupies a site of 1.5 ha, has a floor area of 2,823 sqm with parking for 256 vehicles. The bar and dining area covers some 1,419 sqm. There are function rooms with capacity for about 400 patrons above the bar and dining area. There are also extensive outdoor areas for gaming, dining and drinking within the licensed area. The building incorporates a brewery producing beer for hotels in the Laundy Hotel Group. The Brewhouse's maximum capacity is 2,000 persons. The trading hours are 10am to 3am the following day, Monday to Saturday, and 10am to midnight, Sunday.

The gaming area covers 139 sqm and is designed to permit smoking throughout. The gaming area has its own food and beverage bar and toilets. It is accessible from the main bar and via a separate entrance, by lift, from the under-croft car park. It is designed to accommodate 30 gaming machines. Shortly, there will be 20 gaming machines in the gaming area.

The Brewhouse is located in the Riverstone-Marsden Park SA2 which is ranked in Band 2 by ILGA. Because of that ranking, the application must be accompanied by an LIA. Because of the increase being sought is 10, a Class 1 LIA is required.

The Riverstone-Marsden Park SA2 contains two hotels, five clubs and 218 gaming machines including the 18 currently kept at the Brewhouse. The only other hotel in the SA2 is about 6.5 kms from the Brewhouse in the old established suburb of Riverstone.

## **APPENDIX C**

HOTEL PLANS APPROVED BY COUNCIL

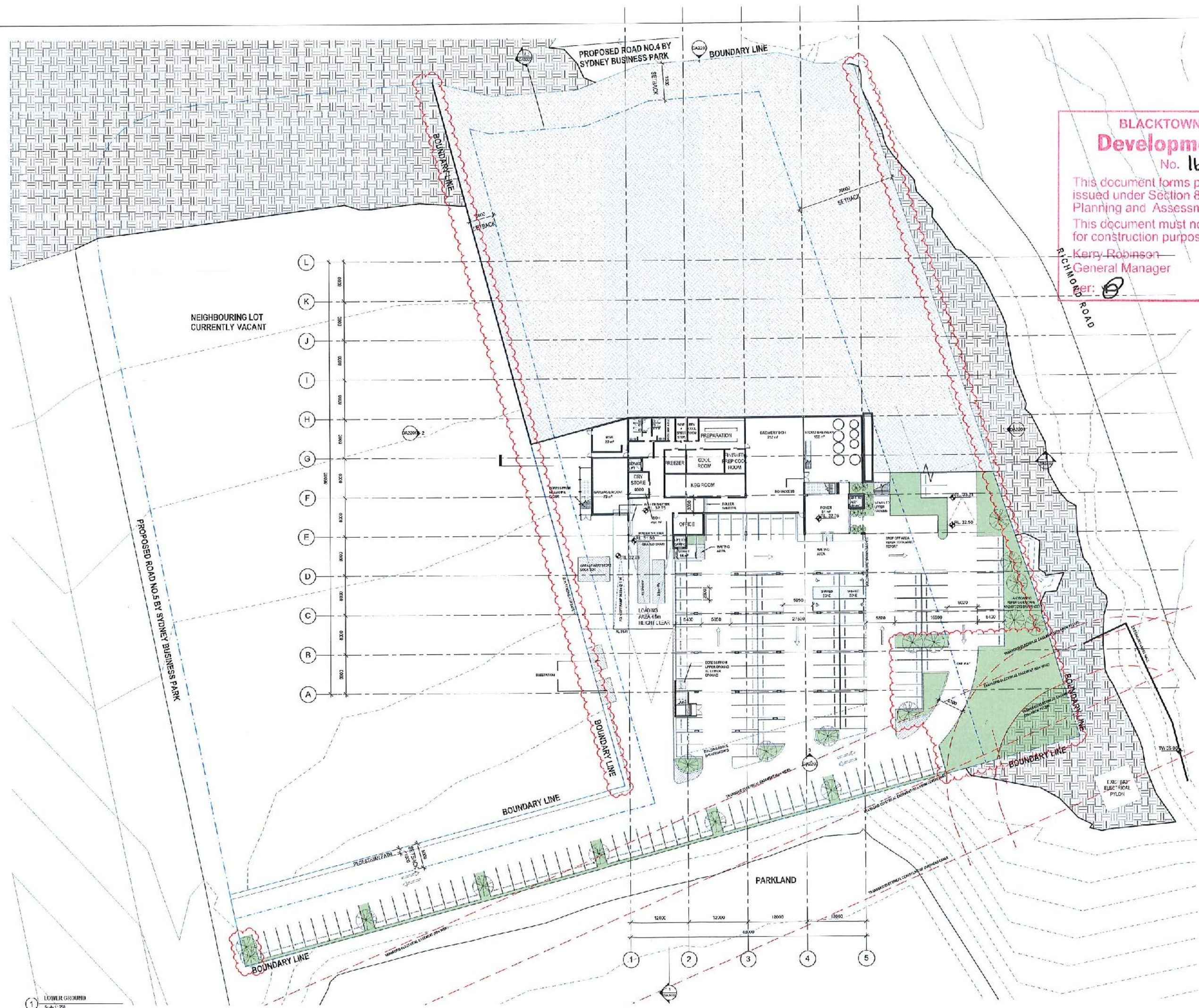


| NO. | DATE       | REVISION               |
|-----|------------|------------------------|
| 1   | 11/06/2016 | ISSUED FOR INFORMATION |
| 2   | 11/06/2016 | ISSUED FOR INFORMATION |
| 3   | 11/06/2016 | ISSUED FOR INFORMATION |
| 4   | 11/06/2016 | ISSUED FOR INFORMATION |
| 5   | 11/06/2016 | ISSUED FOR INFORMATION |
| 6   | 11/06/2016 | ISSUED FOR INFORMATION |
| 7   | 11/06/2016 | ISSUED FOR INFORMATION |
| 8   | 11/06/2016 | ISSUED FOR INFORMATION |
| 9   | 11/06/2016 | ISSUED FOR INFORMATION |
| 10  | 11/06/2016 | ISSUED FOR INFORMATION |
| 11  | 11/06/2016 | ISSUED FOR INFORMATION |
| 12  | 11/06/2016 | ISSUED FOR INFORMATION |
| 13  | 11/06/2016 | ISSUED FOR INFORMATION |
| 14  | 11/06/2016 | ISSUED FOR INFORMATION |
| 15  | 11/06/2016 | ISSUED FOR INFORMATION |
| 16  | 11/06/2016 | ISSUED FOR INFORMATION |
| 17  | 11/06/2016 | ISSUED FOR INFORMATION |
| 18  | 11/06/2016 | ISSUED FOR INFORMATION |
| 19  | 11/06/2016 | ISSUED FOR INFORMATION |
| 20  | 11/06/2016 | ISSUED FOR INFORMATION |
| 21  | 11/06/2016 | ISSUED FOR INFORMATION |
| 22  | 11/06/2016 | ISSUED FOR INFORMATION |
| 23  | 11/06/2016 | ISSUED FOR INFORMATION |
| 24  | 11/06/2016 | ISSUED FOR INFORMATION |
| 25  | 11/06/2016 | ISSUED FOR INFORMATION |
| 26  | 11/06/2016 | ISSUED FOR INFORMATION |
| 27  | 11/06/2016 | ISSUED FOR INFORMATION |
| 28  | 11/06/2016 | ISSUED FOR INFORMATION |
| 29  | 11/06/2016 | ISSUED FOR INFORMATION |
| 30  | 11/06/2016 | ISSUED FOR INFORMATION |
| 31  | 11/06/2016 | ISSUED FOR INFORMATION |
| 32  | 11/06/2016 | ISSUED FOR INFORMATION |
| 33  | 11/06/2016 | ISSUED FOR INFORMATION |
| 34  | 11/06/2016 | ISSUED FOR INFORMATION |
| 35  | 11/06/2016 | ISSUED FOR INFORMATION |
| 36  | 11/06/2016 | ISSUED FOR INFORMATION |
| 37  | 11/06/2016 | ISSUED FOR INFORMATION |
| 38  | 11/06/2016 | ISSUED FOR INFORMATION |
| 39  | 11/06/2016 | ISSUED FOR INFORMATION |
| 40  | 11/06/2016 | ISSUED FOR INFORMATION |
| 41  | 11/06/2016 | ISSUED FOR INFORMATION |
| 42  | 11/06/2016 | ISSUED FOR INFORMATION |
| 43  | 11/06/2016 | ISSUED FOR INFORMATION |
| 44  | 11/06/2016 | ISSUED FOR INFORMATION |
| 45  | 11/06/2016 | ISSUED FOR INFORMATION |
| 46  | 11/06/2016 | ISSUED FOR INFORMATION |
| 47  | 11/06/2016 | ISSUED FOR INFORMATION |
| 48  | 11/06/2016 | ISSUED FOR INFORMATION |
| 49  | 11/06/2016 | ISSUED FOR INFORMATION |
| 50  | 11/06/2016 | ISSUED FOR INFORMATION |
| 51  | 11/06/2016 | ISSUED FOR INFORMATION |
| 52  | 11/06/2016 | ISSUED FOR INFORMATION |
| 53  | 11/06/2016 | ISSUED FOR INFORMATION |
| 54  | 11/06/2016 | ISSUED FOR INFORMATION |
| 55  | 11/06/2016 | ISSUED FOR INFORMATION |
| 56  | 11/06/2016 | ISSUED FOR INFORMATION |
| 57  | 11/06/2016 | ISSUED FOR INFORMATION |
| 58  | 11/06/2016 | ISSUED FOR INFORMATION |
| 59  | 11/06/2016 | ISSUED FOR INFORMATION |
| 60  | 11/06/2016 | ISSUED FOR INFORMATION |
| 61  | 11/06/2016 | ISSUED FOR INFORMATION |
| 62  | 11/06/2016 | ISSUED FOR INFORMATION |
| 63  | 11/06/2016 | ISSUED FOR INFORMATION |
| 64  | 11/06/2016 | ISSUED FOR INFORMATION |
| 65  | 11/06/2016 | ISSUED FOR INFORMATION |
| 66  | 11/06/2016 | ISSUED FOR INFORMATION |
| 67  | 11/06/2016 | ISSUED FOR INFORMATION |
| 68  | 11/06/2016 | ISSUED FOR INFORMATION |
| 69  | 11/06/2016 | ISSUED FOR INFORMATION |
| 70  | 11/06/2016 | ISSUED FOR INFORMATION |
| 71  | 11/06/2016 | ISSUED FOR INFORMATION |
| 72  | 11/06/2016 | ISSUED FOR INFORMATION |
| 73  | 11/06/2016 | ISSUED FOR INFORMATION |
| 74  | 11/06/2016 | ISSUED FOR INFORMATION |
| 75  | 11/06/2016 | ISSUED FOR INFORMATION |
| 76  | 11/06/2016 | ISSUED FOR INFORMATION |
| 77  | 11/06/2016 | ISSUED FOR INFORMATION |
| 78  | 11/06/2016 | ISSUED FOR INFORMATION |
| 79  | 11/06/2016 | ISSUED FOR INFORMATION |
| 80  | 11/06/2016 | ISSUED FOR INFORMATION |
| 81  | 11/06/2016 | ISSUED FOR INFORMATION |
| 82  | 11/06/2016 | ISSUED FOR INFORMATION |
| 83  | 11/06/2016 | ISSUED FOR INFORMATION |
| 84  | 11/06/2016 | ISSUED FOR INFORMATION |
| 85  | 11/06/2016 | ISSUED FOR INFORMATION |
| 86  | 11/06/2016 | ISSUED FOR INFORMATION |
| 87  | 11/06/2016 | ISSUED FOR INFORMATION |
| 88  | 11/06/2016 | ISSUED FOR INFORMATION |
| 89  | 11/06/2016 | ISSUED FOR INFORMATION |
| 90  | 11/06/2016 | ISSUED FOR INFORMATION |
| 91  | 11/06/2016 | ISSUED FOR INFORMATION |
| 92  | 11/06/2016 | ISSUED FOR INFORMATION |
| 93  | 11/06/2016 | ISSUED FOR INFORMATION |
| 94  | 11/06/2016 | ISSUED FOR INFORMATION |
| 95  | 11/06/2016 | ISSUED FOR INFORMATION |
| 96  | 11/06/2016 | ISSUED FOR INFORMATION |
| 97  | 11/06/2016 | ISSUED FOR INFORMATION |
| 98  | 11/06/2016 | ISSUED FOR INFORMATION |
| 99  | 11/06/2016 | ISSUED FOR INFORMATION |
| 100 | 11/06/2016 | ISSUED FOR INFORMATION |

**BLACKTOWN CITY COUNCIL**  
**Development Consent**  
 No. 16-03328

This document forms part of the above approval issued under Section 80 of the Environmental Planning and Assessment Act, 1979.  
 This document must not be used or relied upon for construction purposes.

Kerry Robinson  
 General Manager  
 er:



NOTE: ALL LIGHTING TO UNDERCROFT, LANDSCAPING AND SITE TO MEET LUX LEVELS AS REQUIRED BY RELEVANT AUSTRALIAN STANDARDS AND CPTED REPORT

- PROPOSED LANDSCAPE AREA REFER TO LANDSCAPE ARCHITECTS PLAN
- TRAFFIC LINE MARKING

LAUNDRY

LAUNDRY BREWERY

**ALTIS**  
 architects  
 1/250A RIVERVIEW RD, SYDNEY NSW 1585  
 02 9550 1234  
 www.altis.com.au

LOWER GROUND FLOOR PLAN

|                          |                                      |                        |                        |
|--------------------------|--------------------------------------|------------------------|------------------------|
| DATE                     | 11/06/2016                           | SCALE                  | 1:250                  |
| BY                       | ALTIS                                | CHECKED BY             | ALTIS                  |
| APPROVED BY              | ALTIS                                | DATE                   | 11/06/2016             |
| PROJECT NO.              | 16-03328                             | CLIENT                 | BLACKTOWN CITY COUNCIL |
| LOCATION                 | LAUNDRY BREWERY                      | PROJECT NAME           | LAUNDRY BREWERY        |
| PROJECT ADDRESS          | 1/250A RIVERVIEW RD, SYDNEY NSW 1585 | PROJECT REFERENCE      | 16-03328               |
| PROJECT DESCRIPTION      | LAUNDRY BREWERY                      | PROJECT STATUS         | DEVELOPMENT CONSENT    |
| PROJECT CONTACT          | ALTIS                                | PROJECT PHONE          | 02 9550 1234           |
| PROJECT EMAIL            | info@altis.com.au                    | PROJECT WEBSITE        | www.altis.com.au       |
| PROJECT SOCIAL MEDIA     | ALTIS                                | PROJECT YOUTUBE        | ALTIS                  |
| PROJECT BLOG             | ALTIS                                | PROJECT NEWSLETTER     | ALTIS                  |
| PROJECT PRESS RELEASE    | ALTIS                                | PROJECT MEDIA KIT      | ALTIS                  |
| PROJECT FACT SHEET       | ALTIS                                | PROJECT FAQ            | ALTIS                  |
| PROJECT GLOSSARY         | ALTIS                                | PROJECT ACRONYMS       | ALTIS                  |
| PROJECT ABBREVIATIONS    | ALTIS                                | PROJECT REFERENCES     | ALTIS                  |
| PROJECT SOURCES          | ALTIS                                | PROJECT CREDITS        | ALTIS                  |
| PROJECT ACKNOWLEDGEMENTS | ALTIS                                | PROJECT THANKS         | ALTIS                  |
| PROJECT DISCLAIMER       | ALTIS                                | PROJECT LIMITATIONS    | ALTIS                  |
| PROJECT EXCLUSIONS       | ALTIS                                | PROJECT RESERVATIONS   | ALTIS                  |
| PROJECT CONDITIONS       | ALTIS                                | PROJECT NOTES          | ALTIS                  |
| PROJECT TERMS            | ALTIS                                | PROJECT CONDITIONS     | ALTIS                  |
| PROJECT AGREEMENT        | ALTIS                                | PROJECT SIGNATURES     | ALTIS                  |
| PROJECT SCHEDULE         | ALTIS                                | PROJECT TIMELINE       | ALTIS                  |
| PROJECT BUDGET           | ALTIS                                | PROJECT COSTS          | ALTIS                  |
| PROJECT REVENUE          | ALTIS                                | PROJECT PROFITS        | ALTIS                  |
| PROJECT RISK             | ALTIS                                | PROJECT MITIGATION     | ALTIS                  |
| PROJECT MONITORING       | ALTIS                                | PROJECT EVALUATION     | ALTIS                  |
| PROJECT REVIEW           | ALTIS                                | PROJECT FEEDBACK       | ALTIS                  |
| PROJECT IMPROVEMENTS     | ALTIS                                | PROJECT CHANGES        | ALTIS                  |
| PROJECT CLOSURE          | ALTIS                                | PROJECT AFTERCARE      | ALTIS                  |
| PROJECT LEGAL            | ALTIS                                | PROJECT COMPLIANCE     | ALTIS                  |
| PROJECT ETHICS           | ALTIS                                | PROJECT INTEGRITY      | ALTIS                  |
| PROJECT TRANSPARENCY     | ALTIS                                | PROJECT ACCOUNTABILITY | ALTIS                  |
| PROJECT RESPONSIBILITY   | ALTIS                                | PROJECT COMMITMENT     | ALTIS                  |
| PROJECT PASSION          | ALTIS                                | PROJECT DEDICATION     | ALTIS                  |
| PROJECT PERSEVERANCE     | ALTIS                                | PROJECT RESILIENCE     | ALTIS                  |
| PROJECT COURAGE          | ALTIS                                | PROJECT BRAVERY        | ALTIS                  |
| PROJECT HONESTY          | ALTIS                                | PROJECT INTEGRITY      | ALTIS                  |
| PROJECT FAITHFULNESS     | ALTIS                                | PROJECT LOYALTY        | ALTIS                  |
| PROJECT KINDNESS         | ALTIS                                | PROJECT GENTLENESS     | ALTIS                  |
| PROJECT MERCY            | ALTIS                                | PROJECT GRACE          | ALTIS                  |
| PROJECT PATIENCE         | ALTIS                                | PROJECT FORGIVENESS    | ALTIS                  |
| PROJECT PEACE            | ALTIS                                | PROJECT JOY            | ALTIS                  |
| PROJECT LOVE             | ALTIS                                | PROJECT HOPE           | ALTIS                  |
| PROJECT TRUTH            | ALTIS                                | PROJECT JUSTICE        | ALTIS                  |
| PROJECT RIGHTEOUSNESS    | ALTIS                                | PROJECT HOLINESS       | ALTIS                  |
| PROJECT GLORY            | ALTIS                                | PROJECT HONOUR         | ALTIS                  |
| PROJECT POWER            | ALTIS                                | PROJECT STRENGTH       | ALTIS                  |
| PROJECT WISDOM           | ALTIS                                | PROJECT KNOWLEDGE      | ALTIS                  |
| PROJECT UNDERSTANDING    | ALTIS                                | PROJECT INTELLIGENCE   | ALTIS                  |
| PROJECT SKILL            | ALTIS                                | PROJECT ABILITY        | ALTIS                  |
| PROJECT CAPABILITY       | ALTIS                                | PROJECT POTENTIAL      | ALTIS                  |
| PROJECT OPPORTUNITY      | ALTIS                                | PROJECT CHALLENGE      | ALTIS                  |
| PROJECT OBSTACLE         | ALTIS                                | PROJECT TRIUMPH        | ALTIS                  |
| PROJECT VICTORY          | ALTIS                                | PROJECT SUCCESS        | ALTIS                  |
| PROJECT FAILURE          | ALTIS                                | PROJECT DEFEAT         | ALTIS                  |
| PROJECT LOSS             | ALTIS                                | PROJECT GAIN           | ALTIS                  |
| PROJECT PAIN             | ALTIS                                | PROJECT JOY            | ALTIS                  |
| PROJECT SADNESS          | ALTIS                                | PROJECT HAPPINESS      | ALTIS                  |
| PROJECT ANGER            | ALTIS                                | PROJECT CALM           | ALTIS                  |
| PROJECT FEAR             | ALTIS                                | PROJECT COURAGE        | ALTIS                  |
| PROJECT SHAME            | ALTIS                                | PROJECT HONOUR         | ALTIS                  |
| PROJECT PRIDE            | ALTIS                                | PROJECT HUMILITY       | ALTIS                  |
| PROJECT MODesty          | ALTIS                                | PROJECT GREATNESS      | ALTIS                  |
| PROJECT SMALLNESS        | ALTIS                                | PROJECT BIGNESS        | ALTIS                  |
| PROJECT SILENCE          | ALTIS                                | PROJECT NOISE          | ALTIS                  |
| PROJECT DARKNESS         | ALTIS                                | PROJECT LIGHT          | ALTIS                  |
| PROJECT COLD             | ALTIS                                | PROJECT WARMTH         | ALTIS                  |
| PROJECT HOT              | ALTIS                                | PROJECT COOL           | ALTIS                  |
| PROJECT WET              | ALTIS                                | PROJECT DRY            | ALTIS                  |
| PROJECT SOFT             | ALTIS                                | PROJECT HARD           | ALTIS                  |
| PROJECT SMOOTH           | ALTIS                                | PROJECT ROUGH          | ALTIS                  |
| PROJECT CLEAN            | ALTIS                                | PROJECT DIRTY          | ALTIS                  |
| PROJECT ORDER            | ALTIS                                | PROJECT CHAOS          | ALTIS                  |
| PROJECT NEAT             | ALTIS                                | PROJECT MESSY          | ALTIS                  |
| PROJECT TIDY             | ALTIS                                | PROJECT CLUTTERED      | ALTIS                  |
| PROJECT ORGANIZED        | ALTIS                                | PROJECT DISORGANIZED   | ALTIS                  |
| PROJECT PREPARED         | ALTIS                                | PROJECT UNPREPARED     | ALTIS                  |
| PROJECT READY            | ALTIS                                | PROJECT UNREADY        | ALTIS                  |
| PROJECT WILLING          | ALTIS                                | PROJECT UNWILLING      | ALTIS                  |
| PROJECT CAPABLE          | ALTIS                                | PROJECT INCAPABLE      | ALTIS                  |
| PROJECT ABLE             | ALTIS                                | PROJECT UNABLE         | ALTIS                  |
| PROJECT SKILLED          | ALTIS                                | PROJECT UNSKILLED      | ALTIS                  |
| PROJECT EXPERIENCED      | ALTIS                                | PROJECT INEXPERIENCED  | ALTIS                  |
| PROJECT WISE             | ALTIS                                | PROJECT UNWISE         | ALTIS                  |
| PROJECT KNOWLEDGEABLE    | ALTIS                                | PROJECT IGNORANT       | ALTIS                  |
| PROJECT INTELLIGENT      | ALTIS                                | PROJECT STUPID         | ALTIS                  |
| PROJECT SENSIBLE         | ALTIS                                | PROJECT INSENSIBLE     | ALTIS                  |
| PROJECT REASONABLE       | ALTIS                                | PROJECT UNREASONABLE   | ALTIS                  |
| PROJECT LOGICAL          | ALTIS                                | PROJECT ILL LOGICAL    | ALTIS                  |
| PROJECT RATIONAL         | ALTIS                                | PROJECT IRRATIONAL     | ALTIS                  |
| PROJECT OBJECTIVE        | ALTIS                                | PROJECT SUBJECTIVE     | ALTIS                  |
| PROJECT FAIR             | ALTIS                                | PROJECT UNFAIR         | ALTIS                  |
| PROJECT JUST             | ALTIS                                | PROJECT UNJUST         | ALTIS                  |
| PROJECT EQUITABLE        | ALTIS                                | PROJECT UNEQUITABLE    | ALTIS                  |
| PROJECT BALANCED         | ALTIS                                | PROJECT UNBALANCED     | ALTIS                  |
| PROJECT STABLE           | ALTIS                                | PROJECT UNSTABLE       | ALTIS                  |
| PROJECT SECURE           | ALTIS                                | PROJECT INSECURE       | ALTIS                  |
| PROJECT SAFE             | ALTIS                                | PROJECT UNSAFE         | ALTIS                  |
| PROJECT PROTECTED        | ALTIS                                | PROJECT UNPROTECTED    | ALTIS                  |
| PROJECT DEFENDED         | ALTIS                                | PROJECT UNDEFENDED     | ALTIS                  |
| PROJECT GUARDED          | ALTIS                                | PROJECT UNGUARDED      | ALTIS                  |
| PROJECT VIGILANT         | ALTIS                                | PROJECT INVIGILANT     | ALTIS                  |
| PROJECT ALERT            | ALTIS                                | PROJECT UNALERT        | ALTIS                  |
| PROJECT WATCHFUL         | ALTIS                                | PROJECT UNWATCHFUL     | ALTIS                  |
| PROJECT CAUTIOUS         | ALTIS                                | PROJECT UNCAUTIOUS     | ALTIS                  |
| PROJECT CAREFUL          | ALTIS                                | PROJECT INCAREFUL      | ALTIS                  |
| PROJECT CONSCIOUS        | ALTIS                                | PROJECT UNCONSCIOUS    | ALTIS                  |
| PROJECT AWARE            | ALTIS                                | PROJECT UNAWARE        | ALTIS                  |
| PROJECT MINDFUL          | ALTIS                                | PROJECT UNMINDFUL      | ALTIS                  |
| PROJECT ATTENTIVE        | ALTIS                                | PROJECT INATTENTIVE    | ALTIS                  |
| PROJECT FOCUSED          | ALTIS                                | PROJECT UNFOCUSED      | ALTIS                  |
| PROJECT DETERMINED       | ALTIS                                | PROJECT UNDETERMINED   | ALTIS                  |
| PROJECT RESOLVED         | ALTIS                                | PROJECT UNRESOLVED     | ALTIS                  |
| PROJECT COMMITTED        | ALTIS                                | PROJECT UNCOMMITTED    | ALTIS                  |
| PROJECT DEDICATED        | ALTIS                                | PROJECT UNDEDICATED    | ALTIS                  |
| PROJECT PASSIONATE       | ALTIS                                | PROJECT UNPASSIONATE   | ALTIS                  |
| PROJECT ENTHUSIASTIC     | ALTIS                                | PROJECT UNENTHUSIASTIC | ALTIS                  |
| PROJECT EAGER            | ALTIS                                | PROJECT UNEAGER        | ALTIS                  |
| PROJECT WILLING          | ALTIS                                | PROJECT UNWILLING      | ALTIS                  |
| PROJECT READY            | ALTIS                                | PROJECT UNREADY        | ALTIS                  |
| PROJECT CAPABLE          | ALTIS                                | PROJECT INCAPABLE      | ALTIS                  |
| PROJECT ABLE             | ALTIS                                | PROJECT UNABLE         | ALTIS                  |
| PROJECT SKILLED          | ALTIS                                | PROJECT UNSKILLED      | ALTIS                  |
| PROJECT EXPERIENCED      | ALTIS                                | PROJECT INEXPERIENCED  | ALTIS                  |
| PROJECT WISE             | ALTIS                                | PROJECT UNWISE         | ALTIS                  |
| PROJECT KNOWLEDGEABLE    | ALTIS                                | PROJECT IGNORANT       | ALTIS                  |
| PROJECT INTELLIGENT      | ALTIS                                | PROJECT STUPID         | ALTIS                  |
| PROJECT SENSIBLE         | ALTIS                                | PROJECT INSENSIBLE     | ALTIS                  |
| PROJECT REASONABLE       | ALTIS                                | PROJECT UNREASONABLE   | ALTIS                  |
| PROJECT LOGICAL          | ALTIS                                | PROJECT ILL LOGICAL    | ALTIS                  |
| PROJECT RATIONAL         | ALTIS                                | PROJECT IRRATIONAL     | ALTIS                  |
| PROJECT OBJECTIVE        | ALTIS                                | PROJECT SUBJECTIVE     | ALTIS                  |
| PROJECT FAIR             | ALTIS                                | PROJECT UNFAIR         | ALTIS                  |
| PROJECT JUST             | ALTIS                                | PROJECT UNJUST         | ALTIS                  |
| PROJECT EQUITABLE        | ALTIS                                | PROJECT UNEQUITABLE    | ALTIS                  |
| PROJECT BALANCED         | ALTIS                                | PROJECT UNBALANCED     | ALTIS                  |
| PROJECT STABLE           | ALTIS                                | PROJECT UNSTABLE       | ALTIS                  |
| PROJECT SECURE           | ALTIS                                | PROJECT INSECURE       | ALTIS                  |
| PROJECT SAFE             | ALTIS                                | PROJECT UNSAFE         | ALTIS                  |
| PROJECT PROTECTED        | ALTIS                                | PROJECT UNPROTECTED    | ALTIS                  |
| PROJECT DEFENDED         | ALTIS                                | PROJECT UNDEFENDED     | ALTIS                  |
| PROJECT GUARDED          | ALTIS                                | PROJECT UNGUARDED      | ALTIS                  |
| PROJECT VIGILANT         | ALTIS                                | PROJECT INVIGILANT     | ALTIS                  |
| PROJECT ALERT            | ALTIS                                | PROJECT UNALERT        | ALTIS                  |
| PROJECT WATCHFUL         | ALTIS                                | PROJECT UNWATCHFUL     | ALTIS                  |
| PROJECT CAUTIOUS         | ALTIS                                | PROJECT UNCAUTIOUS     | ALTIS                  |
| PROJECT CAREFUL          | ALTIS                                | PROJECT INCAREFUL      | ALTIS                  |
| PROJECT CONSCIOUS        | ALTIS                                | PROJECT UNCONSCIOUS    | ALTIS                  |
| PROJECT AWARE            | ALTIS                                | PROJECT UNAWARE        | ALTIS                  |
| PROJECT MINDFUL          | ALTIS                                | PROJECT UNMINDFUL      | ALTIS                  |
| PROJECT ATTENTIVE        | ALTIS                                | PROJECT INATTENTIVE    | ALTIS                  |
| PROJECT FOCUSED          | ALTIS                                | PROJECT UNFOCUSED      | ALTIS                  |
| PROJECT DETERMINED       | ALTIS                                | PROJECT UNDETERMINED   | ALTIS                  |
| PROJECT RESOLVED         | ALTIS                                | PROJECT UNRESOLVED     | ALTIS                  |
| PROJECT COMMITTED        | ALTIS                                | PROJECT UNCOMMITTED    | ALTIS                  |
| PROJECT DEDICATED        | ALTIS                                | PROJECT UNDEDICATED    | ALTIS                  |
| PROJECT PASSIONATE       | ALTIS                                | PROJECT UNPASSIONATE   | ALTIS                  |
| PROJECT ENTHUSIASTIC     | ALTIS                                | PROJECT UNENTHUSIASTIC | ALTIS                  |
| PROJECT EAGER            | ALTIS                                | PROJECT UNEAGER        | ALTIS                  |
| PROJECT WILLING          | ALTIS                                | PROJECT UNWILLING      | ALTIS                  |
| PROJECT READY            | ALTIS                                | PROJECT UNREADY        | ALTIS                  |
| PROJECT CAPABLE          | ALTIS                                | PROJECT INCAPABLE      | ALTIS                  |
| PROJECT ABLE             | ALTIS                                | PROJECT UNABLE         | ALTIS                  |
| PROJECT SKILLED          | ALTIS                                | PROJECT UNSKILLED      | ALTIS                  |
| PROJECT EXPERIENCED      | ALTIS                                | PROJECT INEXPERIENCED  | ALTIS                  |
| PROJECT WISE             | ALTIS                                | PROJECT UNWISE         | ALTIS                  |
| PROJECT KNOWLEDGEABLE    | ALTIS                                | PROJECT IGNORANT       | ALTIS                  |
| PROJECT INTELLIGENT      | ALTIS                                | PROJECT STUPID         | ALTIS                  |
| PROJECT SENSIBLE         | ALTIS                                | PROJECT INSENSIBLE     | ALTIS                  |
| PROJECT REASONABLE       | ALTIS                                | PROJECT UNREASONABLE   | ALTIS                  |
| PROJECT LOGICAL          | ALTIS                                | PROJECT ILL LOGICAL    | ALTIS                  |
| PROJECT RATIONAL         | ALTIS                                | PROJECT IRRATIONAL     | ALTIS                  |
| PROJECT OBJECTIVE        | ALTIS                                | PROJECT SUBJECTIVE     | ALTIS                  |



# BLACKTOWN CITY COUNCIL Development Consent

No. 16-03328

This document forms part of the above approval issued under Section 80 of the Environmental Planning and Assessment Act, 1979.

This document must not be used or relied upon for construction purposes.

Kern Robinson  
General Manager

per: [Signature]

| REV | DATE       | BY | DESCRIPTION            |
|-----|------------|----|------------------------|
| 1   | 01/04/2016 | JK | ISSUED FOR INFORMATION |
| 2   | 01/04/2016 | JK | ISSUED FOR INFORMATION |
| 3   | 01/04/2016 | JK | ISSUED FOR INFORMATION |
| 4   | 01/04/2016 | JK | ISSUED FOR INFORMATION |
| 5   | 01/04/2016 | JK | ISSUED FOR INFORMATION |
| 6   | 01/04/2016 | JK | ISSUED FOR INFORMATION |
| 7   | 01/04/2016 | JK | ISSUED FOR INFORMATION |
| 8   | 01/04/2016 | JK | ISSUED FOR INFORMATION |
| 9   | 01/04/2016 | JK | ISSUED FOR INFORMATION |
| 10  | 01/04/2016 | JK | ISSUED FOR INFORMATION |
| 11  | 01/04/2016 | JK | ISSUED FOR INFORMATION |
| 12  | 01/04/2016 | JK | ISSUED FOR INFORMATION |
| 13  | 01/04/2016 | JK | ISSUED FOR INFORMATION |
| 14  | 01/04/2016 | JK | ISSUED FOR INFORMATION |
| 15  | 01/04/2016 | JK | ISSUED FOR INFORMATION |
| 16  | 01/04/2016 | JK | ISSUED FOR INFORMATION |
| 17  | 01/04/2016 | JK | ISSUED FOR INFORMATION |
| 18  | 01/04/2016 | JK | ISSUED FOR INFORMATION |
| 19  | 01/04/2016 | JK | ISSUED FOR INFORMATION |
| 20  | 01/04/2016 | JK | ISSUED FOR INFORMATION |
| 21  | 01/04/2016 | JK | ISSUED FOR INFORMATION |
| 22  | 01/04/2016 | JK | ISSUED FOR INFORMATION |
| 23  | 01/04/2016 | JK | ISSUED FOR INFORMATION |
| 24  | 01/04/2016 | JK | ISSUED FOR INFORMATION |
| 25  | 01/04/2016 | JK | ISSUED FOR INFORMATION |
| 26  | 01/04/2016 | JK | ISSUED FOR INFORMATION |
| 27  | 01/04/2016 | JK | ISSUED FOR INFORMATION |
| 28  | 01/04/2016 | JK | ISSUED FOR INFORMATION |
| 29  | 01/04/2016 | JK | ISSUED FOR INFORMATION |
| 30  | 01/04/2016 | JK | ISSUED FOR INFORMATION |

NEIGHBOURING LOT  
CURRENTLY VACANT

PROPOSED ROAD NO.5 BY SYDNEY BUSINESS PARK

PROPOSED ROAD NO.4 BY  
SYDNEY BUSINESS PARK

BOUNDARY LINE

BOUNDARY LINE

BOUNDARY LINE

BOUNDARY LINE

BOUNDARY LINE

PARKLAND

BOUNDARY LINE

| Parking Schedule | Count              | Level |
|------------------|--------------------|-------|
| 143              | Lower Ground Floor |       |
| 113              | Ground Floor       |       |
| Grand total: 262 |                    |       |

1 UPPER GROUND  
Scale 1:250

NOTE: ALL LIGHTING TO UNDERCROFT, LANDSCAPING AND SITE TO MEET LUX LEVELS AS REQUIRED BY RELEVANT AUSTRALIAN STANDARDS AND CPTED REPORT

PROPOSED LANDSCAPE AREA  
REFER TO LANDSCAPE ARCHITECTS PLAN

TRAFFIC LINE MARKING  
LAUNDRY

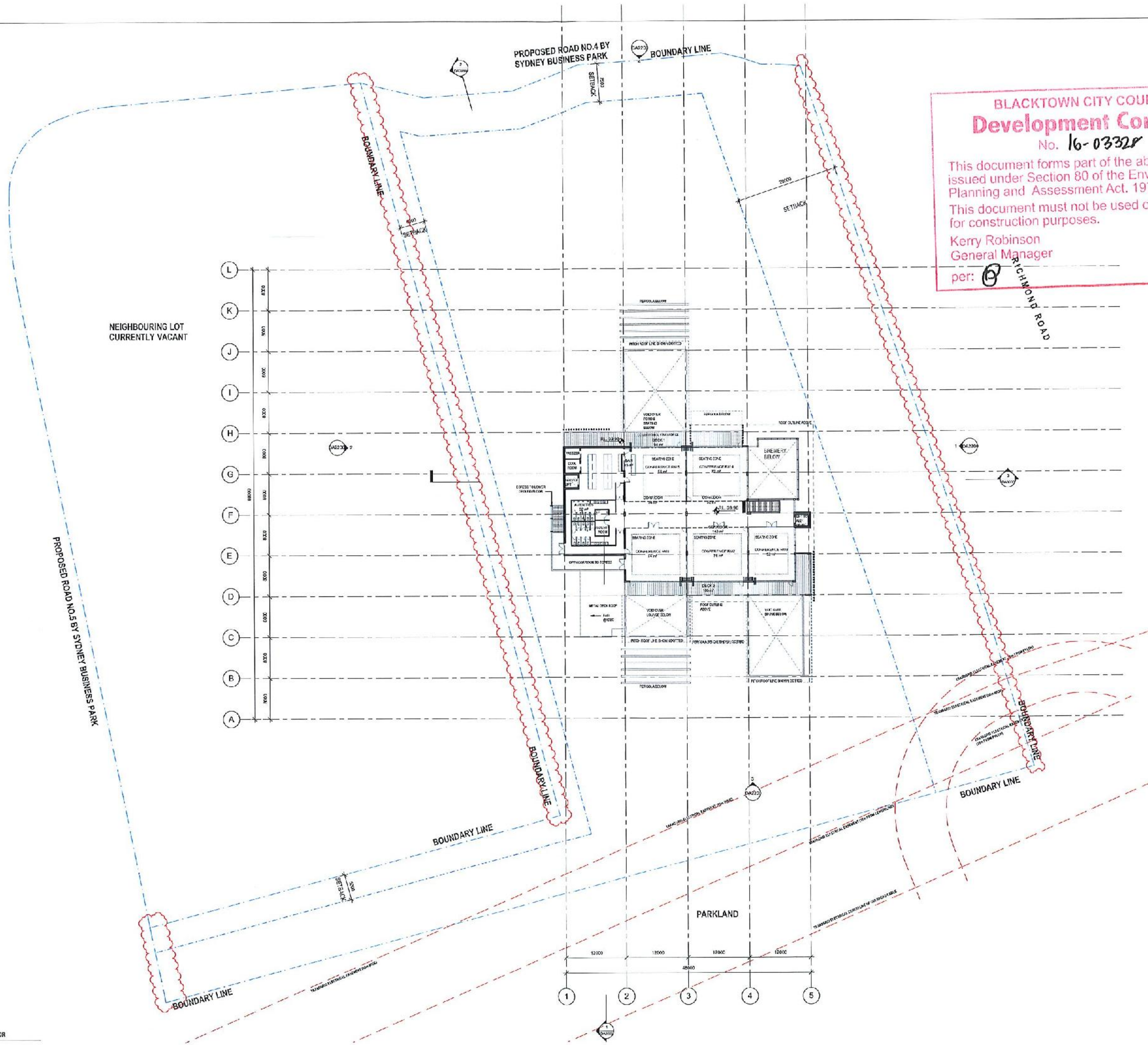
PROJECT  
LAUNDRY BREWERY

ALTIS  
architecture  
p 612 9064 5000 f 612 9571 2000  
www.altis.com.au

UPPER GROUND FLOOR PLAN

DATE: 03/04/2016  
DRAWN BY: JK  
CHECKED BY: LP  
PROJECT NO: 2357.21  
SHEET NO: DA1101  
SCALE: U





**BLACKTOWN CITY COUNCIL**  
**Development Consent**  
No. 16-03328

This document forms part of the above approval issued under Section 80 of the Environmental Planning and Assessment Act, 1979.

This document must not be used or relied upon for construction purposes.

Kerry Robinson  
General Manager

per:

| NO. | DATE       | REVISION               |
|-----|------------|------------------------|
| 1   | 11/04/2018 | ISSUED FOR INFORMATION |
| 2   | 11/04/2018 | ISSUED FOR INFORMATION |
| 3   | 11/04/2018 | ISSUED FOR INFORMATION |
| 4   | 11/04/2018 | ISSUED FOR INFORMATION |
| 5   | 11/04/2018 | ISSUED FOR INFORMATION |
| 6   | 11/04/2018 | ISSUED FOR INFORMATION |
| 7   | 11/04/2018 | ISSUED FOR INFORMATION |
| 8   | 11/04/2018 | ISSUED FOR INFORMATION |
| 9   | 11/04/2018 | ISSUED FOR INFORMATION |
| 10  | 11/04/2018 | ISSUED FOR INFORMATION |
| 11  | 11/04/2018 | ISSUED FOR INFORMATION |
| 12  | 11/04/2018 | ISSUED FOR INFORMATION |
| 13  | 11/04/2018 | ISSUED FOR INFORMATION |
| 14  | 11/04/2018 | ISSUED FOR INFORMATION |
| 15  | 11/04/2018 | ISSUED FOR INFORMATION |
| 16  | 11/04/2018 | ISSUED FOR INFORMATION |
| 17  | 11/04/2018 | ISSUED FOR INFORMATION |
| 18  | 11/04/2018 | ISSUED FOR INFORMATION |
| 19  | 11/04/2018 | ISSUED FOR INFORMATION |
| 20  | 11/04/2018 | ISSUED FOR INFORMATION |

NOTE: ALL LIGHTING TO UNDERCROFT, LANDSCAPING AND SITE TO MEET LUX LEVELS AS REQUIRED BY RELEVANT AUSTRALIAN STANDARDS AND OPTED REPORT

PROPOSED LANDSCAPE AREA REFER TO LANDSCAPE ARCHITECT'S PLAN

|             |                                                                                                                              |
|-------------|------------------------------------------------------------------------------------------------------------------------------|
| PROJECT     | LAUNDRY                                                                                                                      |
| PROJECT     | LAUNDRY BREWERY                                                                                                              |
| ARCHITECT   | <br>ALTIS architecture<br>p 21 2024 002 1 212501 190 lower deck road bay wharf<br>info 75126-52 phone 080 000 0000 2020 2020 |
| DESCRIPTION | MEZZANINE FLOOR PLAN                                                                                                         |
| SCALE       | As Indicated 1:50                                                                                                            |
| DATE        | 05/04/2018                                                                                                                   |
| BY          | ALTIS                                                                                                                        |
| CHECKED BY  | ALTIS                                                                                                                        |
| PROJECT NO. | 2387.01                                                                                                                      |
| DA1102      | N                                                                                                                            |



© 2016 Site Image (NSW) Pty Ltd. All rights reserved. This drawing is copyright and shall not be reproduced or copied in any form or by any means (graphic, electronic or mechanical including photocopying) without the written permission of Site Image (NSW) Pty Ltd. Any reuse, expressed or implied, to use this document for any purpose whatsoever is prohibited to the terms of the written agreement between Site Image (NSW) Pty Ltd and the instructing party.

The contractor shall check and verify all work on site (including work by others) before commencing the landscape installation. Any discrepancies are to be reported to the Project Manager or Landscape Architect prior to commencing work. Do not scale this drawing. Any received dimensions not shown shall be referred to the Landscape Architect for confirmation.

A For Information  
Issue Revision Description  
JD NM 28.04.2017  
Drawn Check Date

# LEGEND

## BLACKTOWN CITY COUNCIL Development Consent

No. 16-03328

Key Plan

This document forms part of the above approval issued under Section 80 of the Environmental Planning and Assessment Act, 1979.

This document must not be used or relied upon for construction purposes.

Kerry Robinson  
General Manager

per:

Client:  
Laundy

Project:  
Laundy Pub and Brewery  
Fulton Road  
Marsden Park

Level 1, 3-5 Basil Street  
Rusden NSW 2016  
Australia  
Tel: (01 21 8232 5800  
Fax: (01 21 9083 2877  
www.siteimage.com.au  
Site Image (NSW) Pty Ltd  
ABN 44 901 252 292

# SITE IMAGE



Landscape Architects

## PRELIMINARY

Drawing Name:  
Landscape Plan

Scale: 1:300 @ A1  
Job Number:  
SS16-3466

Drawing Number:  
001 A

Issue:  
A

NOT FOR CONSTRUCTION



# **APPENDIX D**

## **HOTEL LIQUOR LICENCE**



# Independent Liquor & Gaming Authority

*A statutory board established under the Gaming and Liquor Administration Act 2007*

contact.us@liquorandgaming.nsw.gov.au  
www.liquorandgaming.nsw.gov.au

## **Key liquor licence details recorded as at 29 October 2018**

**Licence number:** LIQH440019005  
**Licence name:** The Marsden Hotel  
**Licence type:** Liquor - hotel licence  
**Licence sub-type:** Full hotel  
**Licence status:** Current  
**Duration:** Unlimited duration  
**Licence start date:** 24/10/2018  
**Licence expiry date:**

### **Licensee**

**Title:** Mr  
**Surname:** Larkin  
**Given name:** Andrew  
**Middle name:** Stephen  
**Website:**  
**Phone - daytime:** 02 9642 1062  
**Mobile:** 0412 019 044  
**Email address:** andy@laundy.com.au  
**Start date:** 24/10/2018  
**Fax number:** 02 9728 1987

### **Premises**

**Address:** 1 Hawthorne Avenue MARSDEN PARK NSW 2765  
**Phone number:**  
**Email address:**  
**Website:**  
**LGA:** Blacktown City Council  
**ABS SLA:** Riverstone - Marsden Park  
**Start date:** 24/10/2018  
**Fax number:**

### **Authorisations**

|              |                                |                    |            |
|--------------|--------------------------------|--------------------|------------|
| <b>Name:</b> | Extended trading authorisation | <b>Start date:</b> | 24/10/2018 |
| <b>Name:</b> | Minors area authorisation      | <b>Start date:</b> | 24/10/2018 |

### **Trading Hours**

#### **Consumption on premises**

| <b>Day</b> | <b>Start Time</b> | <b>End Time</b> | <b>Start Date</b> | <b>End Date</b> |
|------------|-------------------|-----------------|-------------------|-----------------|
| Monday     | 10:00 AM          | - 03:00 AM      | 24/10/2018        |                 |
| Tuesday    | 10:00 AM          | - 03:00 AM      | 24/10/2018        |                 |

**Licence number:** LIQH440019005

**Date Printed:** 29/10/2018

# Independent Liquor & Gaming Authority

|           |          |                  |            |
|-----------|----------|------------------|------------|
| Wednesday | 10:00 AM | - 03:00 AM       | 24/10/2018 |
| Thursday  | 10:00 AM | - 03:00 AM       | 24/10/2018 |
| Friday    | 10:00 AM | - 03:00 AM       | 24/10/2018 |
| Saturday  | 10:00 AM | - 03:00 AM       | 24/10/2018 |
| Sunday    | 10:00 AM | - 12:00 midnight | 24/10/2018 |

## Take away

| Day       | Start Time | End Time   | Start Date | End Date |
|-----------|------------|------------|------------|----------|
| Monday    | 10:00 AM   | - 10:00 PM | 24/10/2018 |          |
| Tuesday   | 10:00 AM   | - 10:00 PM | 24/10/2018 |          |
| Wednesday | 10:00 AM   | - 10:00 PM | 24/10/2018 |          |
| Thursday  | 10:00 AM   | - 10:00 PM | 24/10/2018 |          |
| Friday    | 10:00 AM   | - 10:00 PM | 24/10/2018 |          |
| Saturday  | 10:00 AM   | - 10:00 PM | 24/10/2018 |          |
| Sunday    | 10:00 AM   | - 10:00 PM | 24/10/2018 |          |

## Conditions

Licence conditions imposed by the Liquor Act and Regulation apply. To view a copy of these conditions, go to [www.liquorandgaming.nsw.gov.au](http://www.liquorandgaming.nsw.gov.au)

Additional licence conditions.

|                        |                                                                                                                                                                                                                                                                                                                                                                          |                          |           |
|------------------------|--------------------------------------------------------------------------------------------------------------------------------------------------------------------------------------------------------------------------------------------------------------------------------------------------------------------------------------------------------------------------|--------------------------|-----------|
| <b>Condition type:</b> | Condition                                                                                                                                                                                                                                                                                                                                                                | <b>Condition source:</b> | Authority |
| <b>Reference:</b>      | 50                                                                                                                                                                                                                                                                                                                                                                       |                          |           |
| <b>Condition:</b>      | Section 11A of the Liquor Act 2007 applies to this licence. Liquor must not be sold by retail on the licensed premises for a continuous period of 6 hours between 4:00 AM and 10:00 AM during each consecutive period of 24 hours. The licensee must comply with this 6-hour closure period along with any other limits specified in the trading hours for this licence. |                          |           |
| <b>Start date:</b>     | 24/10/2018                                                                                                                                                                                                                                                                                                                                                               |                          |           |

|                        |                                                                                                                                                                                                                                                                              |                                                                                                    |                 |
|------------------------|------------------------------------------------------------------------------------------------------------------------------------------------------------------------------------------------------------------------------------------------------------------------------|----------------------------------------------------------------------------------------------------|-----------------|
| <b>Condition type:</b> | Condition                                                                                                                                                                                                                                                                    | <b>Condition source:</b>                                                                           | Liquor Act 2007 |
| <b>Reference:</b>      | 101                                                                                                                                                                                                                                                                          |                                                                                                    |                 |
| <b>Condition:</b>      | Consumption on premises                                                                                                                                                                                                                                                      |                                                                                                    |                 |
|                        | Good Friday                                                                                                                                                                                                                                                                  | 12:00 noon - 10:00 PM                                                                              |                 |
|                        | Christmas Day                                                                                                                                                                                                                                                                | 12:00 noon - 10:00 PM (liquor can only be served with or ancillary to a meal in a dining area)     |                 |
|                        | December 31st                                                                                                                                                                                                                                                                | Normal opening time until normal closing time or 2:00 AM on New Year's Day, whichever is the later |                 |
|                        | Note: Trading is also allowed after midnight into the early morning of Good Friday and Christmas Day if authorised by an extended trading authorisation. Trading must cease at the time specified under the authorisation. The latest time that can be specified is 5:00 AM. |                                                                                                    |                 |
| <b>Start date:</b>     | 24/10/2018                                                                                                                                                                                                                                                                   |                                                                                                    |                 |

|                        |                 |                          |                 |
|------------------------|-----------------|--------------------------|-----------------|
| <b>Condition type:</b> | Condition       | <b>Condition source:</b> | Liquor Act 2007 |
| <b>Reference:</b>      | 120             |                          |                 |
| <b>Condition:</b>      | Take away sales |                          |                 |
|                        | Good Friday     | Not permitted            |                 |
|                        | Christmas Day   | Not permitted            |                 |
|                        | December 31st   | Normal trading           |                 |
| <b>Start date:</b>     | 24/10/2018      |                          |                 |

|                        |                                                                                                                                                                                                                                                                                                                                                                                                                                                                                                                                                                                                                                                                                                                                                                                                                                                                                                                                                                                                                                                                                                                                                                                                                                                                                                                                                                                                                                                                                                      |                          |           |
|------------------------|------------------------------------------------------------------------------------------------------------------------------------------------------------------------------------------------------------------------------------------------------------------------------------------------------------------------------------------------------------------------------------------------------------------------------------------------------------------------------------------------------------------------------------------------------------------------------------------------------------------------------------------------------------------------------------------------------------------------------------------------------------------------------------------------------------------------------------------------------------------------------------------------------------------------------------------------------------------------------------------------------------------------------------------------------------------------------------------------------------------------------------------------------------------------------------------------------------------------------------------------------------------------------------------------------------------------------------------------------------------------------------------------------------------------------------------------------------------------------------------------------|--------------------------|-----------|
| <b>Condition type:</b> | Condition                                                                                                                                                                                                                                                                                                                                                                                                                                                                                                                                                                                                                                                                                                                                                                                                                                                                                                                                                                                                                                                                                                                                                                                                                                                                                                                                                                                                                                                                                            | <b>Condition source:</b> | Authority |
| <b>Reference:</b>      | 3010                                                                                                                                                                                                                                                                                                                                                                                                                                                                                                                                                                                                                                                                                                                                                                                                                                                                                                                                                                                                                                                                                                                                                                                                                                                                                                                                                                                                                                                                                                 |                          |           |
| <b>Condition:</b>      | The business authorised by this licence must not operate with a greater overall level of social impact on the wellbeing of the local and broader community than what could be reasonably expected from the information contained in the Community Impact Statement, application and other information submitted in the process of obtaining this licence and extended trading authorisation.                                                                                                                                                                                                                                                                                                                                                                                                                                                                                                                                                                                                                                                                                                                                                                                                                                                                                                                                                                                                                                                                                                         |                          |           |
| <b>Start date:</b>     | 24/10/2018                                                                                                                                                                                                                                                                                                                                                                                                                                                                                                                                                                                                                                                                                                                                                                                                                                                                                                                                                                                                                                                                                                                                                                                                                                                                                                                                                                                                                                                                                           |                          |           |
| <b>Condition type:</b> | Condition                                                                                                                                                                                                                                                                                                                                                                                                                                                                                                                                                                                                                                                                                                                                                                                                                                                                                                                                                                                                                                                                                                                                                                                                                                                                                                                                                                                                                                                                                            | <b>Condition source:</b> | Authority |
| <b>Reference:</b>      | 3020                                                                                                                                                                                                                                                                                                                                                                                                                                                                                                                                                                                                                                                                                                                                                                                                                                                                                                                                                                                                                                                                                                                                                                                                                                                                                                                                                                                                                                                                                                 |                          |           |
| <b>Condition:</b>      | The premises is to be operated at all times in accordance with the Plan of Management dated 15 October 2018 as may be varied from time to time after consultation with NSW Police. A copy the Plan of Management is to be kept on the premises, and made available for inspection on the request of a police officer, council officer, Liquor and Gaming NSW inspector, or any other person authorised by the Independent Liquor and Gaming Authority.                                                                                                                                                                                                                                                                                                                                                                                                                                                                                                                                                                                                                                                                                                                                                                                                                                                                                                                                                                                                                                               |                          |           |
| <b>Start date:</b>     | 24/10/2018                                                                                                                                                                                                                                                                                                                                                                                                                                                                                                                                                                                                                                                                                                                                                                                                                                                                                                                                                                                                                                                                                                                                                                                                                                                                                                                                                                                                                                                                                           |                          |           |
| <b>Condition type:</b> | Condition                                                                                                                                                                                                                                                                                                                                                                                                                                                                                                                                                                                                                                                                                                                                                                                                                                                                                                                                                                                                                                                                                                                                                                                                                                                                                                                                                                                                                                                                                            | <b>Condition source:</b> | Authority |
| <b>Reference:</b>      | 3030                                                                                                                                                                                                                                                                                                                                                                                                                                                                                                                                                                                                                                                                                                                                                                                                                                                                                                                                                                                                                                                                                                                                                                                                                                                                                                                                                                                                                                                                                                 |                          |           |
| <b>Condition:</b>      | <p>Closed-circuit television system</p> <p>1) The licensee must maintain a closed-circuit television (CCTV) system on the premises in accordance with the following requirements:</p> <p>(a) the system must record continuously from opening time until one hour after the premises is required to close (or, in the case of a premises that is not required to cease trading, continuously at all times),</p> <p>(b) recordings must be in digital format and at a minimum of six (6) frames per second,</p> <p>(c) any recorded image must specify the time and date of the recorded image,</p> <p>(d) the system's cameras must cover the following areas:</p> <p>(i) all entry and exit points to the premises,</p> <p>(ii) the footpath immediately adjacent to the premises, and</p> <p>(iii) all publicly accessible areas (other than toilets) within the premises.</p> <p>2) The licensee must also:</p> <p>(a) keep all recordings made by the CCTV system for at least 30 days,</p> <p>(b) ensure that the CCTV system is accessible at all times the system is required to operate pursuant to clause 1(a), by at least one person able to access and fully operate the system, including downloading and producing recordings of CCTV footage, and</p> <p>(c) provide any recordings made by the system to a police officer or Liquor and Gaming NSW inspector within 24 hours of any request by the police officer or Liquor and Gaming NSW inspector to provide such recordings.</p> |                          |           |
| <b>Start date:</b>     | 24/10/2018                                                                                                                                                                                                                                                                                                                                                                                                                                                                                                                                                                                                                                                                                                                                                                                                                                                                                                                                                                                                                                                                                                                                                                                                                                                                                                                                                                                                                                                                                           |                          |           |
| <b>Condition type:</b> | Condition                                                                                                                                                                                                                                                                                                                                                                                                                                                                                                                                                                                                                                                                                                                                                                                                                                                                                                                                                                                                                                                                                                                                                                                                                                                                                                                                                                                                                                                                                            | <b>Condition source:</b> | Authority |
| <b>Reference:</b>      | 3040                                                                                                                                                                                                                                                                                                                                                                                                                                                                                                                                                                                                                                                                                                                                                                                                                                                                                                                                                                                                                                                                                                                                                                                                                                                                                                                                                                                                                                                                                                 |                          |           |
| <b>Condition:</b>      | <p>The licensee shall provide as a minimum the following licensed security officers at the hotel on Friday and Saturday nights from 9:00 PM until the last patron has left the vicinity of the licensed premises:</p> <p>1) Two (2) licensed security officers at the main entrance of the hotel.</p> <p>2) One (1) licensed security officer per 100 persons to patrol the interior of licensed premises.</p> <p>3) A minimum of one (1) additional security officer to patrol the vicinity of the hotel at random with patrols to take place at least hourly from midnight until 30 minutes after closing or when the last patron has left the premises and its immediate vicinity (whichever is later) to ensure that patrons do not linger in the surrounding area.</p> <p>4) A minimum of one (1) additional licensed security officer for each separate function within the hotel's function rooms to monitor patron behaviour in that function room.</p>                                                                                                                                                                                                                                                                                                                                                                                                                                                                                                                                      |                          |           |
| <b>Start date:</b>     | 24/10/2018                                                                                                                                                                                                                                                                                                                                                                                                                                                                                                                                                                                                                                                                                                                                                                                                                                                                                                                                                                                                                                                                                                                                                                                                                                                                                                                                                                                                                                                                                           |                          |           |

|                        |           |                          |           |
|------------------------|-----------|--------------------------|-----------|
| <b>Condition type:</b> | Condition | <b>Condition source:</b> | Authority |
|------------------------|-----------|--------------------------|-----------|

|                        |               |
|------------------------|---------------|
| <b>Licence number:</b> | LIQH440019005 |
|------------------------|---------------|

|                      |            |
|----------------------|------------|
| <b>Date Printed:</b> | 29/10/2018 |
|----------------------|------------|

**Reference:** 3050  
**Condition:** The licensee or its representative must join and be an active participant in the local liquor accord.  
**Start date:** 24/10/2018

---

**Condition type:** Condition **Condition source:** Authority  
**Reference:** 3060  
**Condition:** Crime scene preservation  
 Immediately after the person in charge of the licensed premises or a staff member becomes aware of any incident involving an act of violence causing injury to a person on the premises, the person in charge of the licensed premises and/or staff member must:  
 1) take all practical steps to preserve and keep intact the area where the act of violence occurred,  
 2) retain all material and implements associated with the act of violence in accordance with the crime scene preservation guidelines issued by NSW Police, as published from time to time on the Liquor & Gaming NSW website,  
 3) make direct and personal contact with NSW Police to advise it of the incident, and  
 4) comply with any directions given by NSW Police to preserve or keep intact the area where the violence occurred.  
 In this condition, 'staff member' means any person employed by, or acting on behalf of, the licensee of the premises, and includes any person who is employed to carry on security activities (e.g. crowd controller or bouncer) on or about the premises.

**Start date:** 24/10/2018

---

**Condition type:** Condition **Condition source:** Authority  
**Reference:** 3070  
**Condition:** No patrons are to be admitted onto the licensed premises between 2:00 AM and 10:00 AM Saturday and 2:00 AM and 10:00 AM Sunday.  
**Start date:** 24/10/2018

---

**Condition type:** Condition **Condition source:** Authority  
**Reference:** 3080  
**Condition:** If Council does not approve the continuation of the trial period of post-midnight trading set out in the development consent the trading hours of the premises will revert to 10:00 AM to midnight, Monday to Sunday when that trial period lapses.  
**Start date:** 24/10/2018

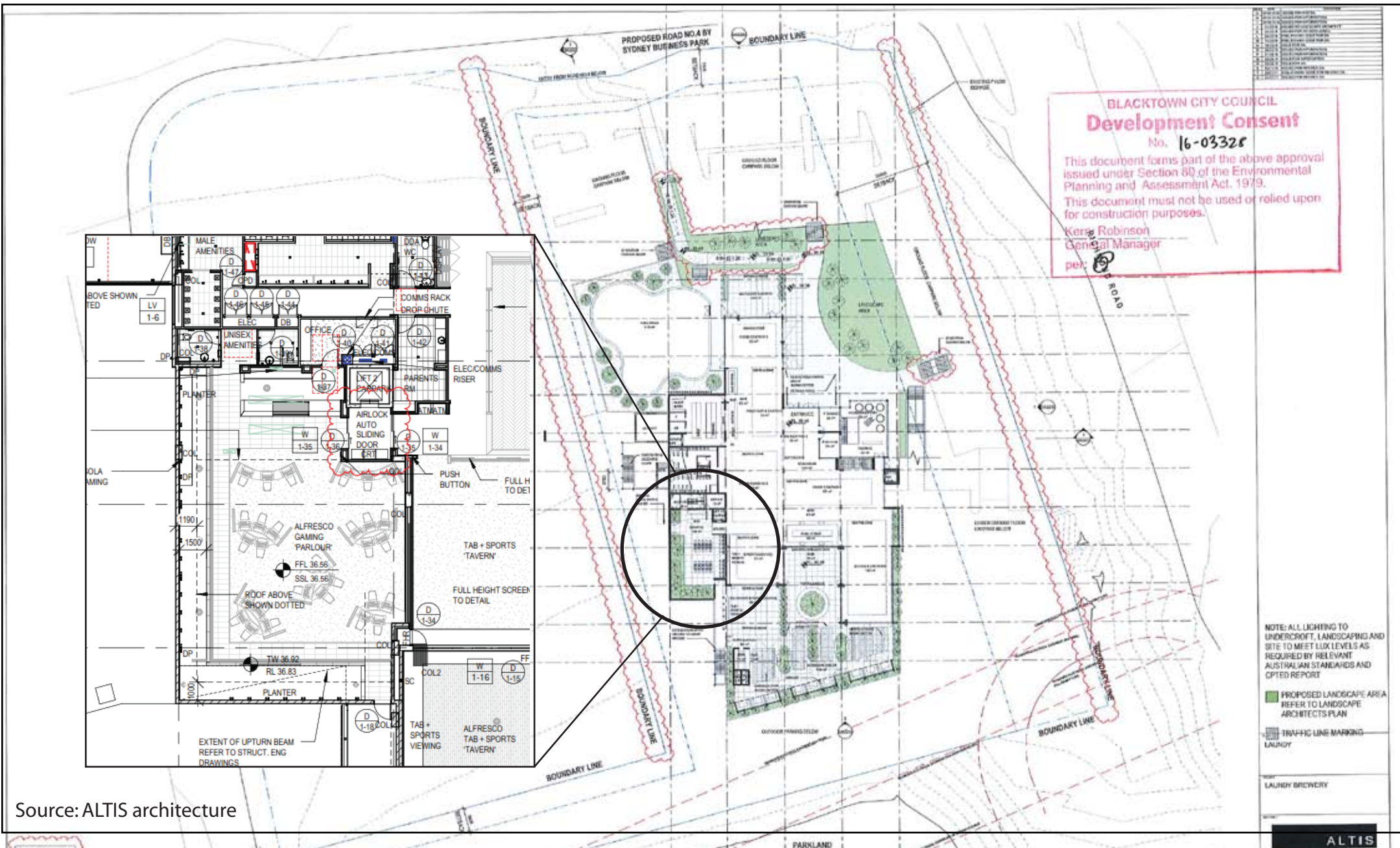
### **Business owner**

**Organisation name:** Samotel Properties Pty Ltd  
**ABN:** 16 610 732 931 **ACN:** 610 732 931  
**Phone - daytime:** **Fax number:**  
**Email address:**  
**Website:**  
**Business address:** Twin Willows Hotel 739 Hume Hwy BASS HILL NSW 2197  
**Postal address:** Twin Willows Hotel 739 Hume Hwy BASS HILL NSW 2197  
**Start date:** 24/10/2018

**Premises owner**

|                           |                                                    |                    |             |
|---------------------------|----------------------------------------------------|--------------------|-------------|
| <b>Organisation name:</b> | Samotel Properties Pty Ltd                         |                    |             |
| <b>ABN:</b>               | 16 610 732 931                                     | <b>ACN:</b>        | 610 732 931 |
| <b>Phone - daytime:</b>   |                                                    | <b>Fax number:</b> |             |
| <b>Email address:</b>     |                                                    |                    |             |
| <b>Website:</b>           |                                                    |                    |             |
| <b>Business address:</b>  | Twin Willows Hotel 739 Hume Hwy BASS HILL NSW 2197 |                    |             |
| <b>Postal address:</b>    | Twin Willows Hotel 739 Hume Hwy BASS HILL NSW 2197 |                    |             |
| <b>Start date:</b>        | 24/10/2018                                         |                    |             |

This licence is subject to a risk-based fee, payable annually. If the fee is not paid on time, the licence will be suspended or cancelled. Visit <https://www.onegov.nsw.gov.au/licencecheck> to find out the status of the licence.



Source: ALTIS architecture



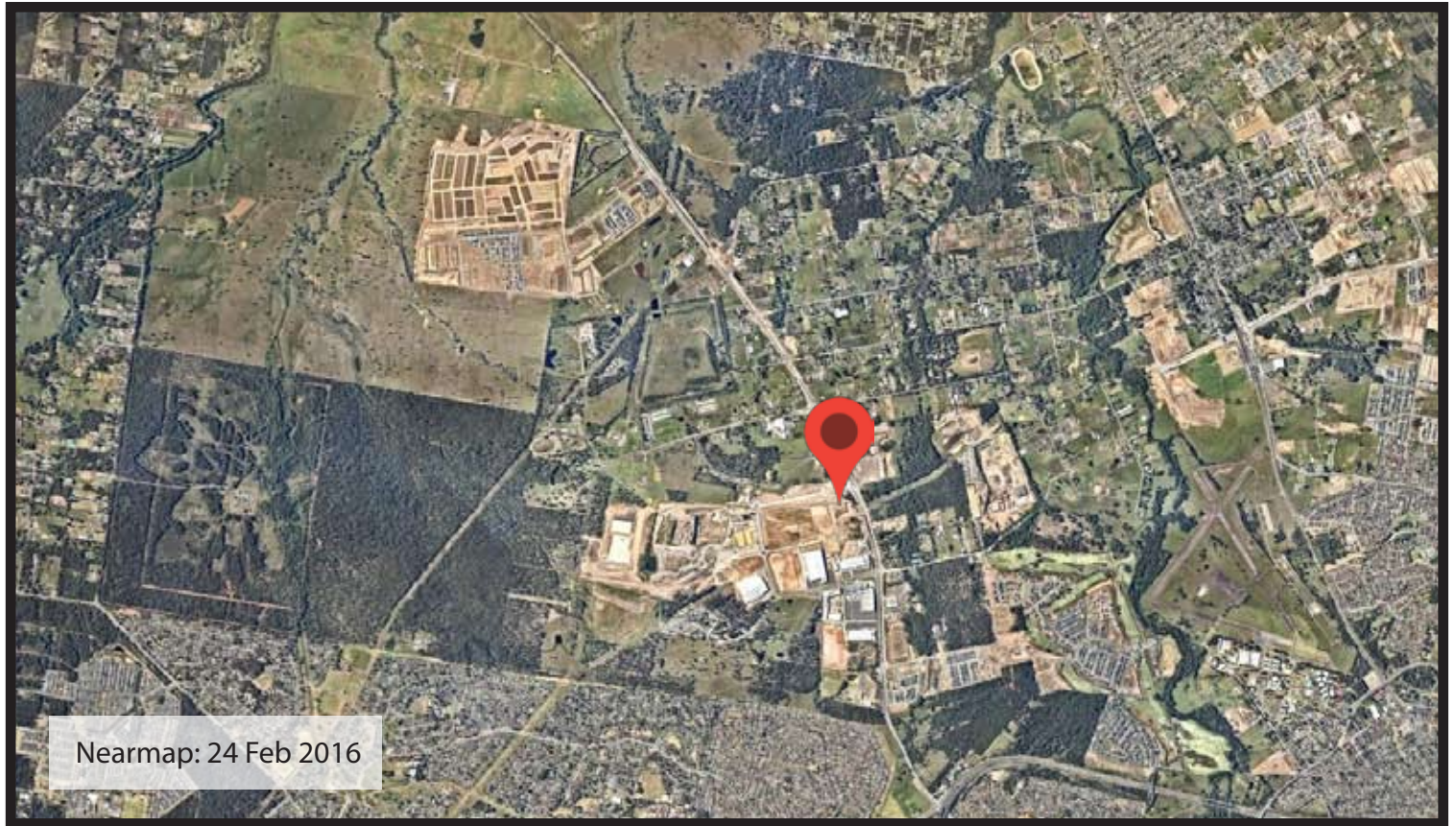
**Design Collaborative**

304 /105 Pitt St Sydney  
 Ph: 9262 3200  
 Fax: 9262 3601

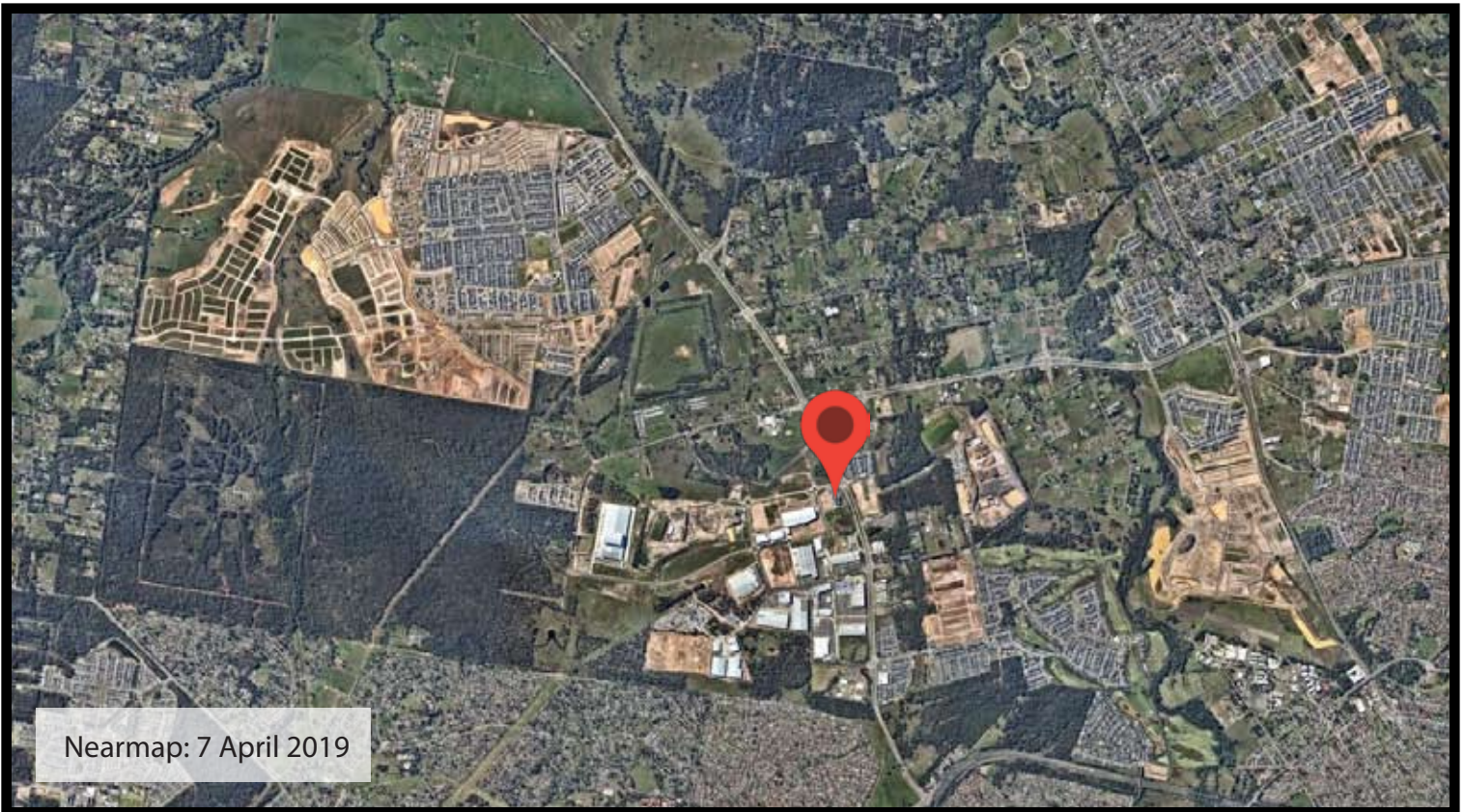
# **APPENDIX E** **GAMING AREA**







Nearmap: 24 Feb 2016



Nearmap: 7 April 2019

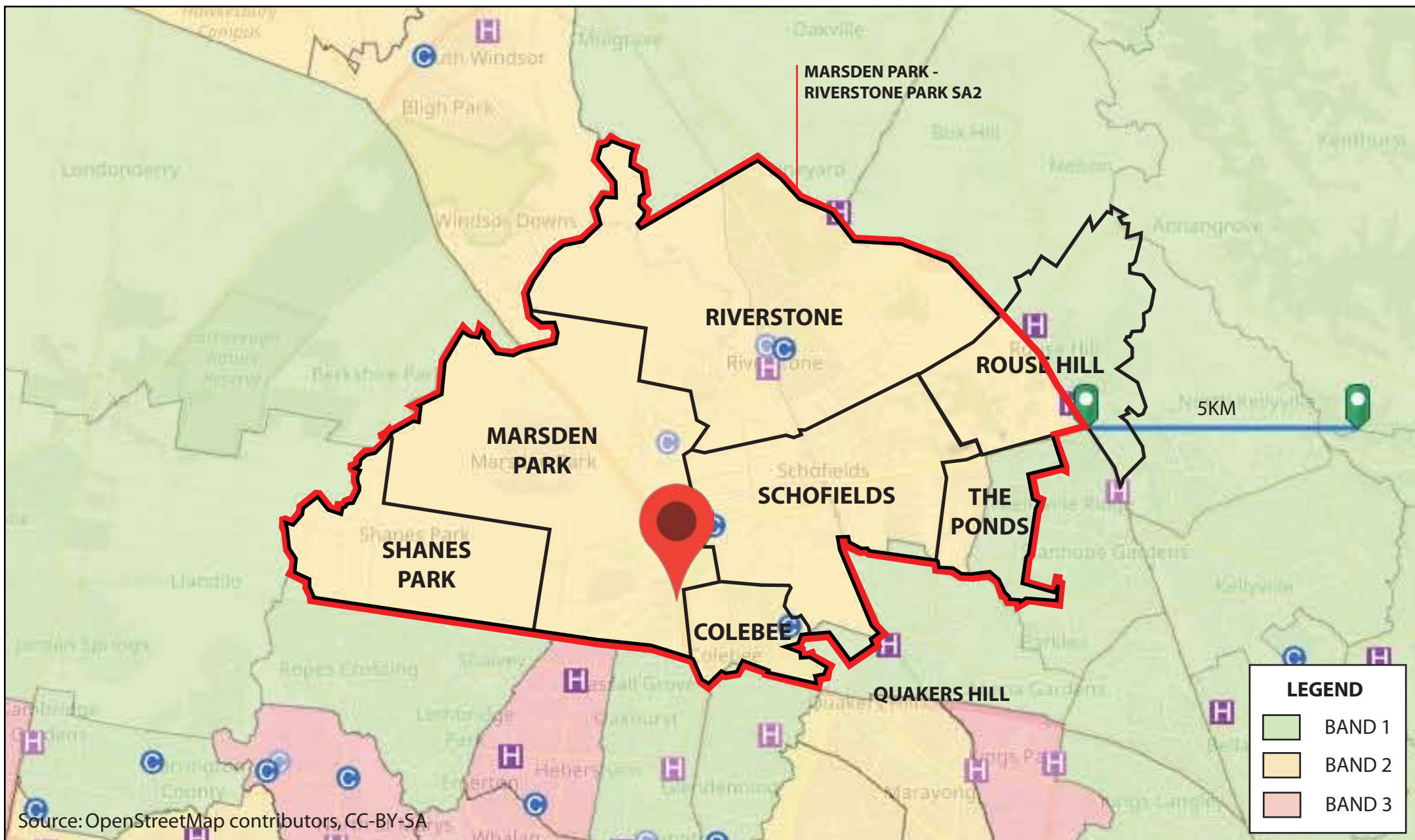
## APPENDIX F - AERIAL PHOTOGRAPHS FROM 2016 AND 2019



**Design Collaborative**  
Suite 304/105 Pitt St Sydney  
Ph: 9262 3200  
Fax: 9262 3601







**Design Collaborative**

304 /105 Pitt St Sydney

Ph: 9262 3200

Fax: 9262 3601

## **APPENDIX G**

### **STATE SUBURBS WITHIN**

### **MARSDEN PARK-RIVERSTONE SA2**

## **APPENDIX H**

MARSDEN PARK – RIVERSTONE SA2 ABS



Australian Bureau of Statistics

## 2016 Census QuickStats

Australia | New South Wales | Statistical Area Level 2

### Riverstone - Marsden Park

Code 116021312 (SA2)

|               |               |
|---------------|---------------|
| <b>People</b> | <b>17,312</b> |
| Male          | 50.6%         |
| Female        | 49.4%         |
| Median age    | 33            |

|                             |              |
|-----------------------------|--------------|
| <b>Families</b>             | <b>4,646</b> |
| Average children per family |              |
| for families with children  | 1.9          |
| for all families            | 1            |

|                                     |              |
|-------------------------------------|--------------|
| <b>All private dwellings</b>        | <b>6,312</b> |
| Average people per household        | 3            |
| Median weekly household income      | \$1,927      |
| Median monthly mortgage repayments  | \$2,600      |
| Median weekly rent                  | \$420        |
| Average motor vehicles per dwelling | 2            |

## People — demographics & education

People tables are based on a person's place of usual residence on Census night

| People                                                                 | Riverstone - Marsden Park | %    | Australia  | %    |
|------------------------------------------------------------------------|---------------------------|------|------------|------|
| <i>Persons count based on place of usual residence on Census night</i> |                           |      |            |      |
| Male                                                                   | 8,762                     | 50.6 | 11,546,638 | 49.3 |
| Female                                                                 | 8,553                     | 49.4 | 11,855,248 | 50.7 |
| Aboriginal and/or Torres Strait Islander people                        | 484                       | 2.8  | 649,171    | 2.8  |

In the 2016 Census, there were 17,312 people in Riverstone - Marsden Park (Statistical Area Level 2). Of these 50.6% were male and 49.4% were female. Aboriginal and/or Torres Strait Islander people made up 2.8% of the population.

| Age               | Riverstone - Marsden Park | %   | Australia | %   |
|-------------------|---------------------------|-----|-----------|-----|
| Median age        | 33                        | --  | 38        | --  |
| 0-4 years         | 1,482                     | 8.6 | 1,464,779 | 6.3 |
| 5-9 years         | 1,324                     | 7.6 | 1,502,646 | 6.4 |
| 10-14 years       | 1,104                     | 6.4 | 1,397,183 | 6.0 |
| 15-19 years       | 1,090                     | 6.3 | 1,421,595 | 6.1 |
| 20-24 years       | 1,036                     | 6.0 | 1,566,793 | 6.7 |
| 25-29 years       | 1,381                     | 8.0 | 1,664,602 | 7.1 |
| 30-34 years       | 1,642                     | 9.5 | 1,703,847 | 7.3 |
| 35-39 years       | 1,530                     | 8.8 | 1,561,679 | 6.7 |
| 40-44 years       | 1,326                     | 7.7 | 1,583,257 | 6.8 |
| 45-49 years       | 1,089                     | 6.3 | 1,581,455 | 6.8 |
| 50-54 years       | 982                       | 5.7 | 1,523,551 | 6.5 |
| 55-59 years       | 830                       | 4.8 | 1,454,332 | 6.2 |
| 60-64 years       | 748                       | 4.3 | 1,299,397 | 5.6 |
| 65-69 years       | 682                       | 3.9 | 1,188,999 | 5.1 |
| 70-74 years       | 473                       | 2.7 | 887,716   | 3.8 |
| 75-79 years       | 307                       | 1.8 | 652,657   | 2.8 |
| 80-84 years       | 161                       | 0.9 | 460,549   | 2.0 |
| 85 years and over | 141                       | 0.8 | 486,842   | 2.1 |

The median age of people in Riverstone - Marsden Park (Statistical Area Level 2) was 33 years. Children aged 0 - 14 years made up 22.6% of the population and people aged 65 years and over made up 10.2% of the population.

| Registered marital status<br><i>People aged 15 years and over</i> | Riverstone - Marsden Park | %    | Australia | %    |
|-------------------------------------------------------------------|---------------------------|------|-----------|------|
| Married                                                           | 7,210                     | 53.8 | 9,148,218 | 48.1 |
| Separated                                                         | 447                       | 3.3  | 608,059   | 3.2  |
| Divorced                                                          | 927                       | 6.9  | 1,626,890 | 8.5  |
| Widowed                                                           | 492                       | 3.7  | 985,204   | 5.2  |
| Never married                                                     | 4,320                     | 32.2 | 6,668,910 | 35.0 |

Of people in Riverstone - Marsden Park (Statistical Area Level 2) aged 15 years and over, 53.8% were married and 10.3% were either divorced or separated.

| Social marital status<br><i>People aged 15 years and over</i> | Riverstone - Marsden Park | %    | Australia | %    |
|---------------------------------------------------------------|---------------------------|------|-----------|------|
| Registered marriage                                           | 6,467                     | 52.9 | 8,001,141 | 47.7 |
| De facto marriage                                             | 1,104                     | 9.0  | 1,751,731 | 10.4 |
| Not married                                                   | 4,655                     | 38.1 | 7,024,973 | 41.9 |

In Riverstone - Marsden Park (Statistical Area Level 2), of people aged 15 years and over, 52.9% of people were in a registered marriage and 9.0% were in a de facto marriage.

| Education                      | Riverstone - Marsden Park | %    | Australia | %    |
|--------------------------------|---------------------------|------|-----------|------|
| Preschool                      | 380                       | 7.1  | 347,621   | 4.8  |
| Primary - Government           | 1,067                     | 19.9 | 1,314,787 | 18.2 |
| Primary - Catholic             | 326                       | 6.1  | 380,604   | 5.3  |
| Primary - other non Government | 233                       | 4.3  | 231,490   | 3.2  |
| Secondary - Government         | 558                       | 10.4 | 827,505   | 11.5 |

|                                            |       |      |           |      |
|--------------------------------------------|-------|------|-----------|------|
| Secondary - Catholic                       | 306   | 5.7  | 338,384   | 4.7  |
| Secondary - other non Government           | 204   | 3.8  | 280,618   | 3.9  |
| Technical or further education institution | 337   | 6.3  | 424,869   | 5.9  |
| University or tertiary institution         | 628   | 11.7 | 1,160,626 | 16.1 |
| Other                                      | 104   | 1.9  | 198,383   | 2.8  |
| Not stated                                 | 1,227 | 22.8 | 1,707,023 | 23.7 |

In Riverstone - Marsden Park (Statistical Area Level 2), 31.1% of people were attending an educational institution. Of these, 30.4% were in primary school, 20.0% in secondary school and 18.0% in a tertiary or technical institution.

| <b>Level of highest educational attainment</b><br><i>People aged 15 years and over</i> | <b>Riverstone -<br/>Marsden Park</b> | <b>%</b> | <b>Australia</b> | <b>%</b> |
|----------------------------------------------------------------------------------------|--------------------------------------|----------|------------------|----------|
| Bachelor Degree level and above                                                        | 2,893                                | 21.6     | 4,181,406        | 22.0     |
| Advanced Diploma and Diploma level                                                     | 1,119                                | 8.3      | 1,687,893        | 8.9      |
| Certificate level IV                                                                   | 417                                  | 3.1      | 551,767          | 2.9      |
| Certificate level III                                                                  | 1,800                                | 13.4     | 2,442,203        | 12.8     |
| Year 12                                                                                | 1,830                                | 13.6     | 2,994,097        | 15.7     |
| Year 11                                                                                | 434                                  | 3.2      | 941,531          | 4.9      |
| Year 10                                                                                | 1,807                                | 13.5     | 2,054,331        | 10.8     |
| Certificate level II                                                                   | 8                                    | 0.1      | 13,454           | 0.1      |
| Certificate level I                                                                    | 0                                    | 0.0      | 2,176            | 0.0      |
| Year 9 or below                                                                        | 1,283                                | 9.6      | 1,529,897        | 8.0      |
| No educational attainment                                                              | 104                                  | 0.8      | 145,844          | 0.8      |
| Not stated                                                                             | 1,302                                | 9.7      | 1,974,794        | 10.4     |

Of people aged 15 and over in Riverstone - Marsden Park (Statistical Area Level 2), 13.6% reported having completed Year 12 as their highest level of educational attainment, 16.5% had completed a Certificate III or IV and 8.3% had completed an Advanced Diploma or Diploma.

2011 benchmarks are not available for this data item.

## People — cultural & language diversity

| <b>Ancestry, top responses</b> | <b>Riverstone -<br/>Marsden Park</b> | <b>%</b> | <b>Australia</b> | <b>%</b> |
|--------------------------------|--------------------------------------|----------|------------------|----------|
| Australian                     | 4,952                                | 22.2     | 7,298,243        | 23.3     |
| English                        | 4,546                                | 20.4     | 7,852,224        | 25.0     |
| Indian                         | 1,813                                | 8.1      | 619,164          | 2.0      |
| Irish                          | 1,198                                | 5.4      | 2,388,058        | 7.6      |
| Maltese                        | 1,048                                | 4.7      | 175,555          | 0.6      |

The most common ancestries in Riverstone - Marsden Park (Statistical Area Level 2) were Australian 22.2%, English 20.4%, Indian 8.1%, Irish 5.4% and Maltese 4.7%.

Respondents had the option of reporting up to two ancestries on their Census form, and this is captured by the Ancestry Multi Response (ANCP) variable used in this table. Therefore, the total responses count will not equal the persons count for this area. Calculated percentages represent a proportion of all responses from people in Riverstone - Marsden Park (Statistical Area Level 2) (including those who did not state an ancestry).

| <b>Country of birth</b> | <b>Riverstone -</b> | <b>%</b> | <b>Australia</b> | <b>%</b> |
|-------------------------|---------------------|----------|------------------|----------|
|-------------------------|---------------------|----------|------------------|----------|

**Marsden Park**

|                            |        |      |            |      |
|----------------------------|--------|------|------------|------|
| Australia                  | 11,020 | 63.7 | 15,614,835 | 66.7 |
| <i>Other top responses</i> |        |      |            |      |
| India                      | 1,250  | 7.2  | 455,389    | 1.9  |
| Philippines                | 529    | 3.1  | 232,386    | 1.0  |
| England                    | 337    | 1.9  | 907,570    | 3.9  |
| New Zealand                | 259    | 1.5  | 518,466    | 2.2  |
| Malta                      | 258    | 1.5  | 37,613     | 0.2  |

In Riverstone - Marsden Park (Statistical Area Level 2), 63.7% of people were born in Australia. The most common countries of birth were India 7.2%, Philippines 3.1%, England 1.9%, New Zealand 1.5% and Malta 1.5%.

| Country of birth of father and/or mother, stated responses | Riverstone - Marsden Park | %    | Australia  | %    |
|------------------------------------------------------------|---------------------------|------|------------|------|
| Both parents born overseas                                 | 7,344                     | 42.4 | 8,051,196  | 34.4 |
| Father only born overseas                                  | 1,037                     | 6.0  | 1,488,092  | 6.4  |
| Mother only born overseas                                  | 792                       | 4.6  | 1,094,591  | 4.7  |
| Both parents born in Australia                             | 6,931                     | 40.0 | 11,070,538 | 47.3 |

In Riverstone - Marsden Park (Statistical Area Level 2), 40.0% of people had both parents born in Australia and 42.4% of people had both parents born overseas.

| Country of birth of father, stated responses | Riverstone - Marsden Park | %    | Australia  | %    |
|----------------------------------------------|---------------------------|------|------------|------|
| Australia                                    | 7,755                     | 44.9 | 12,231,150 | 52.3 |
| India                                        | 1,807                     | 10.5 | 616,939    | 2.6  |
| Philippines                                  | 715                       | 4.1  | 270,177    | 1.2  |
| Malta                                        | 688                       | 4.0  | 100,031    | 0.4  |
| England                                      | 680                       | 3.9  | 1,403,096  | 6.0  |

In Riverstone - Marsden Park (Statistical Area Level 2), the most common countries of birth for male parents were Australia 44.9%, India 10.5%, Philippines 4.1%, Malta 4.0% and England 3.9%.

| Country of birth of mother, stated responses | Riverstone - Marsden Park | %    | Australia  | %    |
|----------------------------------------------|---------------------------|------|------------|------|
| Australia                                    | 8,024                     | 46.4 | 12,643,365 | 54.0 |
| India                                        | 1,795                     | 10.4 | 605,777    | 2.6  |
| Philippines                                  | 782                       | 4.5  | 325,049    | 1.4  |
| Malta                                        | 643                       | 3.7  | 91,404     | 0.4  |
| England                                      | 609                       | 3.5  | 1,302,147  | 5.6  |

In Riverstone - Marsden Park (Statistical Area Level 2), the most common countries of birth for female parents were Australia 46.4%, India 10.4%, Philippines 4.5%, Malta 3.7% and England 3.5%.

| Religious affiliation, top responses | Riverstone - Marsden Park | %    | Australia | %    |
|--------------------------------------|---------------------------|------|-----------|------|
| Catholic                             | 5,032                     | 29.1 | 5,291,834 | 22.6 |
| No Religion, so described            | 3,119                     | 18.0 | 6,933,708 | 29.6 |
| Anglican                             | 2,462                     | 14.2 | 3,101,185 | 13.3 |
| Not stated                           | 1,601                     | 9.2  | 2,238,735 | 9.6  |

|          |       |     |         |     |
|----------|-------|-----|---------|-----|
| Hinduism | 1,202 | 6.9 | 440,300 | 1.9 |
|----------|-------|-----|---------|-----|

The most common responses for religion in Riverstone - Marsden Park (Statistical Area Level 2) were Catholic 29.1%, No Religion, so described 18.0%, Anglican 14.2%, Not stated 9.2% and Hinduism 6.9%. In Riverstone - Marsden Park (Statistical Area Level 2), Christianity was the largest religious group reported overall (62.8%) (this figure excludes not stated responses).

| Language, top responses (other than English)      | Riverstone - Marsden Park | %    | Australia  | %    |
|---------------------------------------------------|---------------------------|------|------------|------|
| Punjabi                                           | 593                       | 3.4  | 132,496    | 0.6  |
| Hindi                                             | 588                       | 3.4  | 159,652    | 0.7  |
| Maltese                                           | 335                       | 1.9  | 31,987     | 0.1  |
| Tagalog                                           | 279                       | 1.6  | 111,273    | 0.5  |
| Mandarin                                          | 267                       | 1.5  | 596,711    | 2.5  |
| English only spoken at home                       | 11,337                    | 65.6 | 17,020,417 | 72.7 |
| Households where a non English language is spoken | 1,837                     | 32.1 | 1,971,011  | 22.2 |

In Riverstone - Marsden Park (Statistical Area Level 2), 65.6% of people only spoke English at home. Other languages spoken at home included Punjabi 3.4%, Hindi 3.4%, Maltese 1.9%, Tagalog 1.6% and Mandarin 1.5%.

## People — employment

| Employment<br><i>People who reported being in the labour force, aged 15 years and over</i> | Riverstone - Marsden Park | %    | Australia | %    |
|--------------------------------------------------------------------------------------------|---------------------------|------|-----------|------|
| Worked full-time                                                                           | 5,867                     | 66.1 | 6,623,065 | 57.7 |
| Worked part-time                                                                           | 2,149                     | 24.2 | 3,491,503 | 30.4 |
| Away from work                                                                             | 392                       | 4.4  | 569,276   | 5.0  |
| Unemployed                                                                                 | 473                       | 5.3  | 787,452   | 6.9  |

There were 8,881 people who reported being in the labour force in the week before Census night in Riverstone - Marsden Park (Statistical Area Level 2). Of these 66.1% were employed full time, 24.2% were employed part-time and 5.3% were unemployed.

The ABS Labour Force Survey provides the official estimates of Australia's unemployment rate. More information about Census and labour force status is provided in Understanding the Census and Census Data.

| Employment - hours worked<br><i>Employed people aged 15 years and over</i> | Riverstone - Marsden Park | %    | Australia | %    |
|----------------------------------------------------------------------------|---------------------------|------|-----------|------|
| 1-15 hours per week                                                        | 742                       | 8.8  | 1,218,823 | 11.4 |
| 16-24 hours per week                                                       | 677                       | 8.0  | 1,079,236 | 10.1 |
| 25-34 hours per week                                                       | 726                       | 8.6  | 1,193,445 | 11.2 |
| 35-39 hours per week                                                       | 1,916                     | 22.8 | 2,031,263 | 19.0 |
| 40 hours or more per week                                                  | 3,954                     | 47.0 | 4,591,801 | 43.0 |

Of employed people in Riverstone - Marsden Park (Statistical Area Level 2), 8.8% worked 1 to 15 hours, 8.0% worked 16 to 24 hours and 47.0% worked 40 hours or more.

| Occupation | Riverstone - | % | Australia | % |
|------------|--------------|---|-----------|---|
|------------|--------------|---|-----------|---|



*Employed people aged 15 years and over***Marsden Park**

|                                        |       |      |           |      |
|----------------------------------------|-------|------|-----------|------|
| Professionals                          | 1,703 | 20.3 | 2,370,966 | 22.2 |
| Clerical and Administrative Workers    | 1,342 | 16.0 | 1,449,681 | 13.6 |
| Technicians and Trades Workers         | 1,225 | 14.6 | 1,447,414 | 13.5 |
| Managers                               | 1,050 | 12.5 | 1,390,047 | 13.0 |
| Machinery Operators and Drivers        | 810   | 9.6  | 670,106   | 6.3  |
| Community and Personal Service Workers | 719   | 8.6  | 1,157,003 | 10.8 |
| Sales Workers                          | 717   | 8.5  | 1,000,955 | 9.4  |
| Labourers                              | 700   | 8.3  | 1,011,520 | 9.5  |

The most common occupations in Riverstone - Marsden Park (Statistical Area Level 2) included Professionals 20.3%, Clerical and Administrative Workers 16.0%, Technicians and Trades Workers 14.6%, Managers 12.5%, and Machinery Operators and Drivers 9.6%.

**Industry of employment, top responses***Employed people aged 15 years and over***Riverstone - Marsden Park****%****Australia****%**

|                                             |     |     |         |     |
|---------------------------------------------|-----|-----|---------|-----|
| Hospitals (except Psychiatric Hospitals)    | 235 | 2.8 | 411,808 | 3.9 |
| Supermarket and Grocery Stores              | 229 | 2.7 | 254,275 | 2.4 |
| Computer System Design and Related Services | 203 | 2.4 | 162,884 | 1.5 |
| Banking                                     | 194 | 2.3 | 144,232 | 1.3 |
| Road Freight Transport                      | 190 | 2.3 | 129,528 | 1.2 |

Of the employed people in Riverstone - Marsden Park (Statistical Area Level 2), 2.8% worked in Hospitals (except Psychiatric Hospitals). Other major industries of employment included Supermarket and Grocery Stores 2.7%, Computer System Design and Related Services 2.4%, Banking 2.3% and Road Freight Transport 2.3%.

**Median weekly incomes***People aged 15 years and over***Riverstone - Marsden Park****%****Australia****%**

|           |       |    |       |    |
|-----------|-------|----|-------|----|
| Personal  | 770   | -- | 662   | -- |
| Family    | 2,065 | -- | 1,734 | -- |
| Household | 1,927 | -- | 1,438 | -- |

The median weekly personal income for people aged 15 years and over in Riverstone - Marsden Park (Statistical Area Level 2) was \$770.

**Travel to work, top responses***Employed people aged 15 years and over***Riverstone - Marsden Park****%****Australia****%**

|                                                            |       |      |           |      |
|------------------------------------------------------------|-------|------|-----------|------|
| Car, as driver                                             | 5,300 | 63.1 | 6,574,571 | 61.5 |
| Train                                                      | 707   | 8.4  | 488,012   | 4.6  |
| Worked at home                                             | 362   | 4.3  | 503,582   | 4.7  |
| Car, as passenger                                          | 347   | 4.1  | 489,922   | 4.6  |
| Truck                                                      | 184   | 2.2  | 85,892    | 0.8  |
| People who travelled to work by public transport           | 1,291 | 15.4 | 1,225,668 | 11.5 |
| People who travelled to work by car as driver or passenger | 6,017 | 71.5 | 7,305,271 | 68.4 |

In Riverstone - Marsden Park (Statistical Area Level 2), on the day of the Census, the most common methods of travel to work for employed people were: Car, as driver 63.1%, Train 8.4% and Worked at home 4.3%. Other common responses were Car, as passenger 4.1% and Truck 2.2%. On the day, 15.4% of employed people used public transport (train, bus, ferry, tram/light rail) as at



least one of their methods of travel to work and 71.5% used car (either as driver or as passenger).

| <b>Unpaid work</b><br><i>People aged 15 years and over</i>                | <b>Riverstone - Marsden Park</b> | <b>%</b> | <b>Australia</b> | <b>%</b> |
|---------------------------------------------------------------------------|----------------------------------|----------|------------------|----------|
| Did unpaid domestic work (last week)                                      | 9,244                            | 69.0     | 13,143,914       | 69.0     |
| Cared for child/children (last two weeks)                                 | 4,422                            | 33.0     | 5,259,400        | 27.6     |
| Provided unpaid assistance to a person with a disability (last two weeks) | 1,434                            | 10.7     | 2,145,203        | 11.3     |
| Did voluntary work through an organisation or group (last 12 months)      | 1,949                            | 14.5     | 3,620,726        | 19.0     |

In Riverstone - Marsden Park (Statistical Area Level 2), of people aged 15 years and over, 69.0% did unpaid domestic work in the week before the Census. During the two weeks before the Census, 33.0% provided care for children and 10.7% assisted family members or others due to a disability, long term illness or problems related to old age. In the year before the Census, 14.5% of people did voluntary work through an organisation or a group.

| <b>Unpaid domestic work, number of hours</b><br><i>People aged 15 years and over</i> | <b>Riverstone - Marsden Park</b> | <b>%</b> | <b>Australia</b> | <b>%</b> |
|--------------------------------------------------------------------------------------|----------------------------------|----------|------------------|----------|
| Less than 5 hours per week                                                           | 2,869                            | 21.4     | 4,298,593        | 22.6     |
| 5 to 14 hours per week                                                               | 3,543                            | 26.4     | 4,944,578        | 26.0     |
| 15 to 29 hours per week                                                              | 1,553                            | 11.6     | 2,189,776        | 11.5     |
| 30 hours or more per week                                                            | 1,276                            | 9.5      | 1,710,970        | 9.0      |

Of people who did unpaid domestic work in the week before the Census in Riverstone - Marsden Park (Statistical Area Level 2), 26.4% worked 5 to 14 hours, 11.6% worked 15 to 29 hours and 9.5% worked 30 hours or more.

## Families — family composition

| <b>Family composition</b>      | <b>Riverstone - Marsden Park</b> | <b>%</b> | <b>Australia</b> | <b>%</b> |
|--------------------------------|----------------------------------|----------|------------------|----------|
| Couple family without children | 1,350                            | 29.0     | 2,291,987        | 37.8     |
| Couple family with children    | 2,504                            | 53.9     | 2,716,224        | 44.7     |
| One parent family              | 724                              | 15.6     | 959,543          | 15.8     |
| Other family                   | 71                               | 1.5      | 102,559          | 1.7      |

Of the families in Riverstone - Marsden Park (Statistical Area Level 2), 53.9% were couple families with children, 29.0% were couple families without children and 15.6% were one parent families.

| <b>Single (or lone) parents</b><br><i>Proportion of the total single (or lone) parent population</i> | <b>Riverstone - Marsden Park</b> | <b>%</b> | <b>Australia</b> | <b>%</b> |
|------------------------------------------------------------------------------------------------------|----------------------------------|----------|------------------|----------|
| Male                                                                                                 | --                               | 21.2     | --               | 18.2     |
| Female                                                                                               | --                               | 78.8     | --               | 81.8     |

In Riverstone - Marsden Park (Statistical Area Level 2), 21.2% of single parents were male and 78.8% were female.

## Families — employment status of couple families

| <b>Employment status of parents in couple families</b><br><i>Labour force, parents or partners aged 15 years and over</i> | <b>Riverstone - Marsden Park</b> | <b>%</b> | <b>Australia</b> | <b>%</b> |
|---------------------------------------------------------------------------------------------------------------------------|----------------------------------|----------|------------------|----------|
|---------------------------------------------------------------------------------------------------------------------------|----------------------------------|----------|------------------|----------|

|                                                                            |       |      |           |      |
|----------------------------------------------------------------------------|-------|------|-----------|------|
| Both employed, worked full-time                                            | 1,235 | 32.0 | 1,084,006 | 21.6 |
| Both employed, worked part-time                                            | 103   | 2.7  | 203,596   | 4.1  |
| One employed full-time, one part-time                                      | 791   | 20.5 | 1,086,460 | 21.7 |
| One employed full-time, other not working                                  | 662   | 17.2 | 749,886   | 15.0 |
| One employed part-time, other not working                                  | 171   | 4.4  | 302,037   | 6.0  |
| Both not working                                                           | 514   | 13.3 | 1,006,697 | 20.1 |
| Other (includes away from work)                                            | 208   | 5.4  | 264,145   | 5.3  |
| Labour force status not stated (by one or both parents in a couple family) | 170   | 4.4  | 311,381   | 6.2  |

In Riverstone - Marsden Park (Statistical Area Level 2), of couple families with children, 32.0% had both partners employed full-time, 2.7% had both employed part-time and 20.5% had one employed full-time and the other part-time.

The ABS Labour Force Survey provides the official estimates of Australia's unemployment rate. More information about Census and labour force status is provided in Understanding the Census and Census Data.

## Dwellings — dwelling structure

*Dwelling tables exclude visitor only and other non-classifiable households*

| Dwelling count               | Riverstone - Marsden Park | %    | Australia | %    |
|------------------------------|---------------------------|------|-----------|------|
| Occupied private dwellings   | 5,360                     | 90.1 | 8,286,073 | 88.8 |
| Unoccupied private dwellings | 587                       | 9.9  | 1,039,874 | 11.2 |

In Riverstone - Marsden Park (Statistical Area Level 2), 90.1% of private dwellings were occupied and 9.9% were unoccupied.

| Dwelling structure<br><i>Occupied private dwellings</i> | Riverstone - Marsden Park | %    | Australia | %    |
|---------------------------------------------------------|---------------------------|------|-----------|------|
| Separate house                                          | 4,567                     | 85.2 | 6,041,788 | 72.9 |
| Semi-detached, row or terrace house, townhouse etc      | 441                       | 8.2  | 1,055,016 | 12.7 |
| Flat or apartment                                       | 11                        | 0.2  | 1,087,434 | 13.1 |
| Other dwelling                                          | 289                       | 5.4  | 64,425    | 0.8  |

Of occupied private dwellings in Riverstone - Marsden Park (Statistical Area Level 2), 85.2% were separate houses, 8.2% were semi-detached, row or terrace houses, townhouses etc, 0.2% were flat or apartments and 5.4% were other dwellings.

| Number of bedrooms<br><i>Occupied private dwellings</i> | Riverstone - Marsden Park | %    | Australia | %    |
|---------------------------------------------------------|---------------------------|------|-----------|------|
| None (includes bedsitters)                              | 8                         | 0.1  | 39,769    | 0.5  |
| 1 bedroom                                               | 101                       | 1.9  | 411,252   | 5.0  |
| 2 bedrooms                                              | 420                       | 7.8  | 1,562,759 | 18.9 |
| 3 bedrooms                                              | 1,780                     | 33.3 | 3,403,190 | 41.1 |
| 4 or more bedrooms                                      | 2,876                     | 53.7 | 2,670,758 | 32.2 |
| Number of bedrooms not stated                           | 167                       | 3.1  | 198,351   | 2.4  |
| Average number of bedrooms per dwelling                 | 3.6                       | --   | 3.1       | --   |
| Average number of people per household                  | 3                         | --   | 2.6       | --   |

In Riverstone - Marsden Park (Statistical Area Level 2), of occupied private dwellings 1.9% had 1 bedroom, 7.8% had 2 bedrooms and 33.3% had 3

bedrooms. The average number of bedrooms per occupied private dwelling was 3.6. The average household size was 3 people.

| <b>Tenure</b><br><i>Occupied private dwellings</i> | <b>Riverstone -<br/>Marsden Park</b> | <b>%</b> | <b>Australia</b> | <b>%</b> |
|----------------------------------------------------|--------------------------------------|----------|------------------|----------|
| Owned outright                                     | 1,336                                | 24.9     | 2,565,695        | 31.0     |
| Owned with a mortgage                              | 2,372                                | 44.2     | 2,855,222        | 34.5     |
| Rented                                             | 1,444                                | 26.9     | 2,561,302        | 30.9     |
| Other tenure type                                  | 23                                   | 0.4      | 78,994           | 1.0      |
| Tenure type not stated                             | 190                                  | 3.5      | 224,869          | 2.7      |

Of occupied private dwellings in Riverstone - Marsden Park (Statistical Area Level 2), 24.9% were owned outright, 44.2% were owned with a mortgage and 26.9% were rented.

## Dwellings — household composition

| <b>Household composition</b>       | <b>Riverstone -<br/>Marsden Park</b> | <b>%</b> | <b>Australia</b> | <b>%</b> |
|------------------------------------|--------------------------------------|----------|------------------|----------|
| Family households                  | 4,416                                | 82.4     | 5,907,625        | 71.3     |
| Single (or lone) person households | 826                                  | 15.4     | 2,023,542        | 24.4     |
| Group households                   | 117                                  | 2.2      | 354,917          | 4.3      |

In Riverstone - Marsden Park (Statistical Area Level 2), of all households, 82.4% were family households, 15.4% were single person households and 2.2% were group households.

| <b>Household income</b>              | <b>Riverstone -<br/>Marsden Park</b> | <b>%</b> | <b>Australia</b> | <b>%</b> |
|--------------------------------------|--------------------------------------|----------|------------------|----------|
| Less than \$650 gross weekly income  | --                                   | 13.1     | --               | 20.0     |
| More than \$3000 gross weekly income | --                                   | 22.5     | --               | 16.4     |

In Riverstone - Marsden Park (Statistical Area Level 2), 13.1% of households had a weekly household income of less than \$650 and 22.5% of households had a weekly income of more than \$3000.

## Dwellings — mortgage & rent

*Proportions are calculated using all tenure types for occupied private dwellings. This excludes visitor only and other non-classifiable households.*

| <b>Rent weekly payments</b>                                                    | <b>Riverstone -<br/>Marsden Park</b> | <b>%</b> | <b>Australia</b> | <b>%</b> |
|--------------------------------------------------------------------------------|--------------------------------------|----------|------------------|----------|
| Median rent                                                                    | 420                                  | --       | 335              | --       |
| Households where rent payments are less than 30% of household income           | --                                   | 89.4     | --               | 88.5     |
| Households with rent payments greater than or equal to 30% of household income | --                                   | 10.6     | --               | 11.5     |

The number of households where rent payments were 30% or more of an imputed income measure are expressed in this table as a proportion of the total number of households in an area (including those households which were not renting, and excluding the small proportion of visitor-only and other non-classifiable households). The nature of the income imputation means that the reported proportion may significantly overstate the true proportion.

| <b>Mortgage monthly repayments</b>                                                   | <b>Riverstone - Marsden Park</b> | <b>%</b> | <b>Australia</b> | <b>%</b> |
|--------------------------------------------------------------------------------------|----------------------------------|----------|------------------|----------|
| Median mortgage repayments                                                           | 2,600                            | --       | 1,755            | --       |
| Households where mortgage repayments are less than 30% of household income           | --                               | 87.0     | --               | 92.8     |
| Households with mortgage repayments greater than or equal to 30% of household income | --                               | 13.0     | --               | 7.2      |

The number of households where mortgage repayments were 30% or more of an imputed income measure are expressed in this table as a proportion of the total number of households in an area (including those households which were renting, and excluding the small proportion of visitor only and other non-classifiable households). The nature of the income imputation means that the reported proportion may significantly overstate the true proportion.

## Dwellings — number of motor vehicles

| <b>Number of registered motor vehicles</b> | <b>Riverstone - Marsden Park</b> | <b>%</b> | <b>Australia</b> | <b>%</b> |
|--------------------------------------------|----------------------------------|----------|------------------|----------|
| None                                       | 206                              | 3.8      | 623,829          | 7.5      |
| 1 motor vehicle                            | 1,512                            | 28.2     | 2,881,485        | 34.8     |
| 2 motor vehicles                           | 2,205                            | 41.1     | 2,999,184        | 36.2     |
| 3 or more vehicles                         | 1,229                            | 22.9     | 1,496,382        | 18.1     |
| Number of motor vehicles not stated        | 216                              | 4.0      | 285,197          | 3.4      |

In Riverstone - Marsden Park (Statistical Area Level 2), 28.2% of occupied private dwellings had one registered motor vehicle garaged or parked at their address, 41.1% had two registered motor vehicles and 22.9% had three or more registered motor vehicles.

## Dwellings — internet connection

| <b>Dwelling internet connection</b> | <b>Riverstone - Marsden Park</b> | <b>%</b> | <b>Australia</b> | <b>%</b> |
|-------------------------------------|----------------------------------|----------|------------------|----------|
| Internet not accessed from dwelling | 644                              | 12.0     | 1,172,415        | 14.1     |
| Internet accessed from dwelling     | 4,520                            | 84.3     | 6,892,165        | 83.2     |
| Not stated                          | 198                              | 3.7      | 221,494          | 2.7      |

In Riverstone - Marsden Park (Statistical Area Level 2), 84.3% of households had at least one person access the internet from the dwelling. This could have been through a desktop/laptop computer, mobile or smart phone, tablet, music or video player, gaming console, smart TV or any other device.

## People characteristics - Aboriginal and/or Torres Strait Islander peoples

| <b>People characteristics</b>                                   | <b>Riverstone - Marsden Park</b> | <b>%</b> | <b>Australia</b> | <b>%</b> |
|-----------------------------------------------------------------|----------------------------------|----------|------------------|----------|
| <i>Count based on place of usual residence on Census night.</i> |                                  |          |                  |          |
| Male                                                            | 250                              | 51.7     | 322,171          | 49.6     |
| Female                                                          | 234                              | 48.3     | 326,996          | 50.4     |
| Median age                                                      | 22                               | --       | 23               | --       |

In Riverstone - Marsden Park (Statistical Area Level 2), 51.7% of Aboriginal and/or Torres Strait Islander people were male and 48.3% were female. The median age was 22 years.

## Dwelling characteristics - Aboriginal and/or Torres Strait Islander households

*Dwelling tables exclude visitor only and other non-classifiable households*

| <b>Dwelling characteristics</b><br><i>Occupied private dwellings where at least one person was Aboriginal and/or Torres Strait Islander</i> | <b>Riverstone - Marsden Park</b> | <b>%</b> | <b>Australia</b> | <b>%</b> |
|---------------------------------------------------------------------------------------------------------------------------------------------|----------------------------------|----------|------------------|----------|
| Average number of people per household                                                                                                      | 3.4                              | --       | 3.2              | --       |
| Average number of persons per bedroom                                                                                                       | 1                                | --       | 1                | --       |
| Median weekly household income                                                                                                              | 1,567                            | --       | 1,203            | --       |

There has been change in methodology used to calculate the average number of persons per bedroom. To compare the time series for average number of persons per bedroom please refer to Understanding the Census and Census Data

In Riverstone - Marsden Park (Statistical Area Level 2), for dwellings occupied by Aboriginal and/or Torres Strait Islander people, the average household size was 3.4 persons, with 1 persons per bedroom. The median household income was \$1,567.

| <b>Mortgage and rent</b><br><i>Occupied private dwellings where at least one person was Aboriginal and/or Torres Strait Islander</i> | <b>Riverstone - Marsden Park</b> | <b>%</b> | <b>Australia</b> | <b>%</b> |
|--------------------------------------------------------------------------------------------------------------------------------------|----------------------------------|----------|------------------|----------|
| Median weekly rent                                                                                                                   | 390                              | --       | 250              | --       |
| Median monthly mortgage repayments                                                                                                   | 2,167                            | --       | 1,660            | --       |

In Riverstone - Marsden Park (Statistical Area Level 2), for dwellings occupied by Aboriginal and/or Torres Strait Islander people, the median weekly rent was \$390 and the median monthly mortgage repayment was \$2,167.

### LATEST ISSUE Released at 11:30 AM (AEST) 23/10/2017

Small random adjustments have been made to all cell values to protect the confidentiality of data. These adjustments may cause the sum of rows or columns to differ by small amounts from the table totals. For further information, go to the User Guide for QuickStats.

Data reported for Australia and Other Territories now includes Norfolk Island, following an amendment to the *Acts Interpretation Act, 1901*. Because Norfolk Island has not previously been included in the Census, any 2011 benchmarks will not include Norfolk Island.

The information contained in this QuickStat has been produced by the Australian Bureau of Statistics | It contains data from the 2016 Census of Population & Housing held on 9 August 2016 | Release date of this QuickStat was 23 October 2017 | Some values may have been adjusted to avoid release of confidential data | These adjustments may have a significant impact on the calculated percentages in QuickStats | For more information refer to Introduced Random Error in the 2016 Census Dictionary. For further enquiries contact the ABS National Information and Referral Service on 1300 135 070 | [www.abs.gov.au/census](http://www.abs.gov.au/census)

This page last updated 3 September 2018

# **APPENDIX I**

NSW ABS



Australian Bureau of Statistics

## 2016 Census QuickStats

Australia | State/Territory

### New South Wales

Code 1 (STE)

|               |                  |
|---------------|------------------|
| <b>People</b> | <b>7,480,228</b> |
| Male          | 49.3%            |
| Female        | 50.7%            |
| Median age    | 38               |

|                             |                  |
|-----------------------------|------------------|
| <b>Families</b>             | <b>1,940,226</b> |
| Average children per family |                  |
| for families with children  | 1.9              |
| for all families            | 0.8              |

|                                     |                  |
|-------------------------------------|------------------|
| <b>All private dwellings</b>        | <b>3,059,599</b> |
| Average people per household        | 2.6              |
| Median weekly household income      | \$1,486          |
| Median monthly mortgage repayments  | \$1,986          |
| Median weekly rent                  | \$380            |
| Average motor vehicles per dwelling | 1.7              |

## People — demographics & education

People tables are based on a person's place of usual residence on Census night

| People                                                                 | New South Wales | %    | Australia  | %    |
|------------------------------------------------------------------------|-----------------|------|------------|------|
| <i>Persons count based on place of usual residence on Census night</i> |                 |      |            |      |
| Male                                                                   | 3,686,014       | 49.3 | 11,546,638 | 49.3 |
| Female                                                                 | 3,794,217       | 50.7 | 11,855,248 | 50.7 |
| Aboriginal and/or Torres Strait Islander people                        | 216,176         | 2.9  | 649,171    | 2.8  |

In the 2016 Census, there were 7,480,228 people in New South Wales. Of these 49.3% were male and 50.7% were female. Aboriginal and/or Torres Strait Islander people made up 2.9% of the population.

| Age               | New South Wales | %   | Australia | %   |
|-------------------|-----------------|-----|-----------|-----|
| Median age        | 38              | --  | 38        | --  |
| 0-4 years         | 465,135         | 6.2 | 1,464,779 | 6.3 |
| 5-9 years         | 478,184         | 6.4 | 1,502,646 | 6.4 |
| 10-14 years       | 443,009         | 5.9 | 1,397,183 | 6.0 |
| 15-19 years       | 448,425         | 6.0 | 1,421,595 | 6.1 |
| 20-24 years       | 489,673         | 6.5 | 1,566,793 | 6.7 |
| 25-29 years       | 527,161         | 7.0 | 1,664,602 | 7.1 |
| 30-34 years       | 540,360         | 7.2 | 1,703,847 | 7.3 |
| 35-39 years       | 499,724         | 6.7 | 1,561,679 | 6.7 |
| 40-44 years       | 503,169         | 6.7 | 1,583,257 | 6.8 |
| 45-49 years       | 492,440         | 6.6 | 1,581,455 | 6.8 |
| 50-54 years       | 485,546         | 6.5 | 1,523,551 | 6.5 |
| 55-59 years       | 469,726         | 6.3 | 1,454,332 | 6.2 |
| 60-64 years       | 420,044         | 5.6 | 1,299,397 | 5.6 |
| 65-69 years       | 384,470         | 5.1 | 1,188,999 | 5.1 |
| 70-74 years       | 292,556         | 3.9 | 887,716   | 3.8 |
| 75-79 years       | 217,308         | 2.9 | 652,657   | 2.8 |
| 80-84 years       | 155,806         | 2.1 | 460,549   | 2.0 |
| 85 years and over | 167,506         | 2.2 | 486,842   | 2.1 |

The median age of people in New South Wales was 38 years. Children aged 0 - 14 years made up 18.5% of the population and people aged 65 years and over made up 16.3% of the population.

| Registered marital status<br><i>People aged 15 years and over</i> | New South Wales | %    | Australia | %    |
|-------------------------------------------------------------------|-----------------|------|-----------|------|
| Married                                                           | 2,965,280       | 48.7 | 9,148,218 | 48.1 |
| Separated                                                         | 190,198         | 3.1  | 608,059   | 3.2  |
| Divorced                                                          | 512,298         | 8.4  | 1,626,890 | 8.5  |
| Widowed                                                           | 331,653         | 5.4  | 985,204   | 5.2  |
| Never married                                                     | 2,094,460       | 34.4 | 6,668,910 | 35.0 |

Of people in New South Wales aged 15 years and over, 48.7% were married and 11.5% were either divorced or separated.

| Social marital status<br><i>People aged 15 years and over</i> | New South Wales | %    | Australia | %    |
|---------------------------------------------------------------|-----------------|------|-----------|------|
| Registered marriage                                           | 2,612,630       | 48.3 | 8,001,141 | 47.7 |
| De facto marriage                                             | 506,133         | 9.4  | 1,751,731 | 10.4 |
| Not married                                                   | 2,290,887       | 42.3 | 7,024,973 | 41.9 |

In New South Wales, of people aged 15 years and over, 48.3% of people were in a registered marriage and 9.4% were in a de facto marriage.

| Education                                  | New South Wales | %    | Australia | %    |
|--------------------------------------------|-----------------|------|-----------|------|
| Pre-school                                 | 132,047         | 5.7  | 347,621   | 4.8  |
| Primary - Government                       | 417,465         | 18.0 | 1,314,787 | 18.2 |
| Primary - Catholic                         | 122,099         | 5.3  | 380,604   | 5.3  |
| Primary - other non Government             | 67,611          | 2.9  | 231,490   | 3.2  |
| Secondary - Government                     | 269,249         | 11.6 | 827,505   | 11.5 |
| Secondary - Catholic                       | 117,689         | 5.1  | 338,384   | 4.7  |
| Secondary - other non Government           | 79,915          | 3.4  | 280,618   | 3.9  |
| Technical or further education institution | 144,103         | 6.2  | 424,869   | 5.9  |
| University or tertiary institution         | 376,133         | 16.2 | 1,160,626 | 16.1 |



|            |         |      |           |      |
|------------|---------|------|-----------|------|
| Other      | 63,673  | 2.7  | 198,383   | 2.8  |
| Not stated | 535,266 | 23.0 | 1,707,023 | 23.7 |

In New South Wales 31.1% of people were attending an educational institution. Of these, 26.1% were in primary school, 20.1% in secondary school and 22.4% in a tertiary or technical institution.

| <b>Level of highest educational attainment</b><br><i>People aged 15 years and over</i> | <b>New South Wales</b> | <b>%</b> | <b>Australia</b> | <b>%</b> |
|----------------------------------------------------------------------------------------|------------------------|----------|------------------|----------|
| Bachelor Degree level and above                                                        | 1,424,716              | 23.4     | 4,181,406        | 22.0     |
| Advanced Diploma and Diploma level                                                     | 543,142                | 8.9      | 1,687,893        | 8.9      |
| Certificate level IV                                                                   | 167,947                | 2.8      | 551,767          | 2.9      |
| Certificate level III                                                                  | 730,498                | 12.0     | 2,442,203        | 12.8     |
| Year 12                                                                                | 930,654                | 15.3     | 2,994,097        | 15.7     |
| Year 11                                                                                | 203,574                | 3.3      | 941,531          | 4.9      |
| Year 10                                                                                | 702,178                | 11.5     | 2,054,331        | 10.8     |
| Certificate level II                                                                   | 4,849                  | 0.1      | 13,454           | 0.1      |
| Certificate level I                                                                    | 625                    | 0.0      | 2,176            | 0.0      |
| Year 9 or below                                                                        | 513,209                | 8.4      | 1,529,897        | 8.0      |
| No educational attainment                                                              | 54,870                 | 0.9      | 145,844          | 0.8      |
| Not stated                                                                             | 627,465                | 10.3     | 1,974,794        | 10.4     |

Of people aged 15 and over in New South Wales, 15.3% reported having completed Year 12 as their highest level of educational attainment, 14.8% had completed a Certificate III or IV and 8.9% had completed an Advanced Diploma or Diploma.

2011 benchmarks are not available for this data item.

## People — cultural & language diversity

| <b>Ancestry, top responses</b> | <b>New South Wales</b> | <b>%</b> | <b>Australia</b> | <b>%</b> |
|--------------------------------|------------------------|----------|------------------|----------|
| English                        | 2,302,481              | 23.3     | 7,852,224        | 25.0     |
| Australian                     | 2,261,062              | 22.9     | 7,298,243        | 23.3     |
| Irish                          | 741,671                | 7.5      | 2,388,058        | 7.6      |
| Scottish                       | 587,052                | 5.9      | 2,023,470        | 6.4      |
| Chinese                        | 514,594                | 5.2      | 1,213,903        | 3.9      |

The most common ancestries in New South Wales were English 23.3%, Australian 22.9%, Irish 7.5%, Scottish 5.9% and Chinese 5.2%.

Respondents had the option of reporting up to two ancestries on their Census form, and this is captured by the Ancestry Multi Response (ANCP) variable used in this table. Therefore, the total responses count will not equal the persons count for this area. Calculated percentages represent a proportion of all responses from people in New South Wales (including those who did not state an ancestry).

| <b>Country of birth</b>          | <b>New South Wales</b> | <b>%</b> | <b>Australia</b> | <b>%</b> |
|----------------------------------|------------------------|----------|------------------|----------|
| Australia                        | 4,899,090              | 65.5     | 15,614,835       | 66.7     |
| <i>Other top responses</i>       |                        |          |                  |          |
| China (excludes SARs and Taiwan) | 234,508                | 3.1      | 509,555          | 2.2      |
| England                          | 226,564                | 3.0      | 907,570          | 3.9      |
| India                            | 143,459                | 1.9      | 455,389          | 1.9      |
| New Zealand                      | 117,136                | 1.6      | 518,466          | 2.2      |

|             |        |     |         |     |
|-------------|--------|-----|---------|-----|
| Philippines | 86,749 | 1.2 | 232,386 | 1.0 |
|-------------|--------|-----|---------|-----|

In New South Wales, 65.5% of people were born in Australia. The most common countries of birth were China (excludes SARs and Taiwan) 3.1%, England 3.0%, India 1.9%, New Zealand 1.6% and Philippines 1.2%.

| Country of birth of father and/or mother, stated responses | New South Wales | %    | Australia  | %    |
|------------------------------------------------------------|-----------------|------|------------|------|
| Both parents born overseas                                 | 2,764,170       | 37.0 | 8,051,196  | 34.4 |
| Father only born overseas                                  | 458,394         | 6.1  | 1,488,092  | 6.4  |
| Mother only born overseas                                  | 325,182         | 4.3  | 1,094,591  | 4.7  |
| Both parents born in Australia                             | 3,399,725       | 45.4 | 11,070,538 | 47.3 |

In New South Wales, 45.4% of people had both parents born in Australia and 37.0% of people had both parents born overseas.

| Country of birth of father, stated responses | New South Wales | %    | Australia  | %    |
|----------------------------------------------|-----------------|------|------------|------|
| Australia                                    | 3,745,787       | 50.1 | 12,231,150 | 52.3 |
| England                                      | 359,370         | 4.8  | 1,403,096  | 6.0  |
| China (excludes SARs and Taiwan)             | 332,465         | 4.4  | 704,658    | 3.0  |
| India                                        | 195,217         | 2.6  | 616,939    | 2.6  |
| Lebanon                                      | 143,993         | 1.9  | 196,333    | 0.8  |

2011 comparison data is not available for this table. For the 2001, 2006 and 2011 Censuses, only whether a person's father was born in Australia or overseas was collected. In 2016, this question expanded to collect the actual country of birth of a person's father.

In New South Wales, the most common countries of birth for male parents were Australia 50.1%, England 4.8%, China (excludes SARs and Taiwan) 4.4%, India 2.6% and Lebanon 1.9%.

| Country of birth of mother, stated responses | New South Wales | %    | Australia  | %    |
|----------------------------------------------|-----------------|------|------------|------|
| Australia                                    | 3,884,762       | 51.9 | 12,643,365 | 54.0 |
| China (excludes SARs and Taiwan)             | 329,967         | 4.4  | 699,074    | 3.0  |
| England                                      | 322,472         | 4.3  | 1,302,147  | 5.6  |
| India                                        | 191,594         | 2.6  | 605,777    | 2.6  |
| New Zealand                                  | 139,899         | 1.9  | 608,329    | 2.6  |

2011 comparison data is not available for this table. For the 2001, 2006 and 2011 Censuses, only whether a person's mother was born in Australia or overseas was collected. In 2016, this question expanded to collect the actual country of birth of a person's mother.

In New South Wales, the most common countries of birth for female parents were Australia 51.9%, China (excludes SARs and Taiwan) 4.4%, England 4.3%, India 2.6% and New Zealand 1.9%.

| Religious affiliation, top responses | New South Wales | %    | Australia | %    |
|--------------------------------------|-----------------|------|-----------|------|
| No Religion, so described            | 1,879,562       | 25.1 | 6,933,708 | 29.6 |
| Catholic                             | 1,846,443       | 24.7 | 5,291,834 | 22.6 |
| Anglican                             | 1,161,810       | 15.5 | 3,101,185 | 13.3 |
| Not stated                           | 684,969         | 9.2  | 2,238,735 | 9.6  |
| Islam                                | 267,659         | 3.6  | 604,240   | 2.6  |

The most common responses for religion in New South Wales were No Religion, so described 25.1%, Catholic 24.7%, Anglican 15.5%, Not stated 9.2% and Islam 3.6%. In New South Wales, Christianity was the largest religious group reported overall (60.7%) (this figure excludes not stated responses).

| Language, top responses (other than English)      | New South Wales | %    | Australia  | %    |
|---------------------------------------------------|-----------------|------|------------|------|
| Mandarin                                          | 239,945         | 3.2  | 596,711    | 2.5  |
| Arabic                                            | 200,825         | 2.7  | 321,728    | 1.4  |
| Cantonese                                         | 143,333         | 1.9  | 280,943    | 1.2  |
| Vietnamese                                        | 102,896         | 1.4  | 277,400    | 1.2  |
| Greek                                             | 81,683          | 1.1  | 237,588    | 1.0  |
| English only spoken at home                       | 5,126,633       | 68.5 | 17,020,417 | 72.7 |
| Households where a non English language is spoken | 735,563         | 26.5 | 1,971,011  | 22.2 |

In New South Wales, 68.5% of people only spoke English at home. Other languages spoken at home included Mandarin 3.2%, Arabic 2.7%, Cantonese 1.9%, Vietnamese 1.4% and Greek 1.1%.

## People — employment

| Employment<br><i>People who reported being in the labour force, aged 15 years and over</i> | New South Wales | %    | Australia | %    |
|--------------------------------------------------------------------------------------------|-----------------|------|-----------|------|
| Worked full-time                                                                           | 2,134,521       | 59.2 | 6,623,065 | 57.7 |
| Worked part-time                                                                           | 1,071,151       | 29.7 | 3,491,503 | 30.4 |
| Away from work                                                                             | 174,654         | 4.8  | 569,276   | 5.0  |
| Unemployed                                                                                 | 225,546         | 6.3  | 787,452   | 6.9  |

There were 3,605,872 people who reported being in the labour force in the week before Census night in New South Wales. Of these 59.2% were employed full time, 29.7% were employed part-time and 6.3% were unemployed.

The ABS Labour Force Survey provides the official estimates of Australia's unemployment rate. More information about Census and labour force status is provided in Understanding the Census and Census Data.

| Employment - hours worked<br><i>Employed people aged 15 years and over</i> | New South Wales | %    | Australia | %    |
|----------------------------------------------------------------------------|-----------------|------|-----------|------|
| 1-15 hours per week                                                        | 364,637         | 10.8 | 1,218,823 | 11.4 |
| 16-24 hours per week                                                       | 352,817         | 10.4 | 1,079,236 | 10.1 |
| 25-34 hours per week                                                       | 353,702         | 10.5 | 1,193,445 | 11.2 |
| 35-39 hours per week                                                       | 645,428         | 19.1 | 2,031,263 | 19.0 |
| 40 hours or more per week                                                  | 1,489,099       | 44.1 | 4,591,801 | 43.0 |

Of employed people in New South Wales, 10.8% worked 1 to 15 hours, 10.4% worked 16 to 24 hours and 44.1% worked 40 hours or more.

| Occupation<br><i>Employed people aged 15 years and over</i> | New South Wales | %    | Australia | %    |
|-------------------------------------------------------------|-----------------|------|-----------|------|
| Professionals                                               | 798,126         | 23.6 | 2,370,966 | 22.2 |
| Clerical and Administrative Workers                         | 467,977         | 13.8 | 1,449,681 | 13.6 |
| Managers                                                    | 456,084         | 13.5 | 1,390,047 | 13.0 |
| Technicians and Trades Workers                              |                 |      |           |      |

|                                        |         |      |           |      |
|----------------------------------------|---------|------|-----------|------|
|                                        | 429,239 | 12.7 | 1,447,414 | 13.5 |
| Community and Personal Service Workers | 350,261 | 10.4 | 1,157,003 | 10.8 |
| Sales Workers                          | 311,414 | 9.2  | 1,000,955 | 9.4  |
| Labourers                              | 297,887 | 8.8  | 1,011,520 | 9.5  |
| Machinery Operators and Drivers        | 206,839 | 6.1  | 670,106   | 6.3  |

The most common occupations in New South Wales included Professionals 23.6%, Clerical and Administrative Workers 13.8%, Managers 13.5%, Technicians and Trades Workers 12.7%, and Community and Personal Service Workers 10.4%.

| <b>Industry of employment, top responses</b><br><i>Employed people aged 15 years and over</i> | <b>New South Wales</b> | <b>%</b> | <b>Australia</b> | <b>%</b> |
|-----------------------------------------------------------------------------------------------|------------------------|----------|------------------|----------|
| Hospitals (except Psychiatric Hospitals)                                                      | 119,350                | 3.5      | 411,808          | 3.9      |
| Cafes and Restaurants                                                                         | 80,552                 | 2.4      | 253,385          | 2.4      |
| Supermarket and Grocery Stores                                                                | 74,487                 | 2.2      | 254,275          | 2.4      |
| Aged Care Residential Services                                                                | 67,209                 | 2.0      | 211,621          | 2.0      |
| Primary Education                                                                             | 65,204                 | 1.9      | 231,198          | 2.2      |

Of the employed people in New South Wales, 3.5% worked in Hospitals (except Psychiatric Hospitals). Other major industries of employment included Cafes and Restaurants 2.4%, Supermarket and Grocery Stores 2.2%, Aged Care Residential Services 2.0% and Primary Education 1.9%.

| <b>Median weekly incomes</b><br><i>People aged 15 years and over</i> | <b>New South Wales</b> | <b>%</b> | <b>Australia</b> | <b>%</b> |
|----------------------------------------------------------------------|------------------------|----------|------------------|----------|
| Personal                                                             | 664                    | --       | 662              | --       |
| Family                                                               | 1,780                  | --       | 1,734            | --       |
| Household                                                            | 1,486                  | --       | 1,438            | --       |

The median weekly personal income for people aged 15 years and over in New South Wales was \$664.

| <b>Travel to work, top responses</b><br><i>Employed people aged 15 years and over</i> | <b>New South Wales</b> | <b>%</b> | <b>Australia</b> | <b>%</b> |
|---------------------------------------------------------------------------------------|------------------------|----------|------------------|----------|
| Car, as driver                                                                        | 1,953,399              | 57.8     | 6,574,571        | 61.5     |
| Train                                                                                 | 252,786                | 7.5      | 488,012          | 4.6      |
| Worked at home                                                                        | 163,026                | 4.8      | 503,582          | 4.7      |
| Car, as passenger                                                                     | 144,820                | 4.3      | 489,922          | 4.6      |
| Bus                                                                                   | 133,903                | 4.0      | 323,201          | 3.0      |
| People who travelled to work by public transport                                      | 540,215                | 16.0     | 1,225,668        | 11.5     |
| People who travelled to work by car as driver or passenger                            | 2,182,854              | 64.6     | 7,305,271        | 68.4     |

In New South Wales, on the day of the Census, the most common methods of travel to work for employed people were: Car, as driver 57.8%, Train 7.5% and Worked at home 4.8%. Other common responses were Car, as passenger 4.3% and Bus 4.0%. On the day, 16.0% of employed people used public transport (train, bus, ferry, tram/light rail) as at least one of their methods of travel to work and 64.6% used car (either as driver or as passenger).

| <b>Unpaid work</b><br><i>People aged 15 years and over</i> | <b>New South Wales</b> | <b>%</b> | <b>Australia</b> | <b>%</b> |
|------------------------------------------------------------|------------------------|----------|------------------|----------|
| Did unpaid domestic work (last week)                       | 4,127,723              | 67.7     | 13,143,914       | 69.0     |

|                                                                           |           |      |           |      |
|---------------------------------------------------------------------------|-----------|------|-----------|------|
| Cared for child/children (last two weeks)                                 | 1,659,250 | 27.2 | 5,259,400 | 27.6 |
| Provided unpaid assistance to a person with a disability (last two weeks) | 709,415   | 11.6 | 2,145,203 | 11.3 |
| Did voluntary work through an organisation or group (last 12 months)      | 1,103,790 | 18.1 | 3,620,726 | 19.0 |

In New South Wales, of people aged 15 years and over, 67.7% did unpaid domestic work in the week before the Census. During the two weeks before the Census, 27.2% provided care for children and 11.6% assisted family members or others due to a disability, long term illness or problems related to old age. In the year before the Census, 18.1% of people did voluntary work through an organisation or a group.

| Unpaid domestic work, number of hours<br><i>People aged 15 years and over</i> | New South Wales | %    | Australia | %    |
|-------------------------------------------------------------------------------|-----------------|------|-----------|------|
| Less than 5 hours per week                                                    | 1,359,656       | 22.3 | 4,298,593 | 22.6 |
| 5 to 14 hours per week                                                        | 1,531,206       | 25.1 | 4,944,578 | 26.0 |
| 15 to 29 hours per week                                                       | 690,934         | 11.3 | 2,189,776 | 11.5 |
| 30 hours or more per week                                                     | 545,925         | 9.0  | 1,710,970 | 9.0  |

Of people who did unpaid domestic work in the week before the Census in New South Wales, 25.1% worked 5 to 14 hours, 11.3% worked 15 to 29 hours and 9.0% worked 30 hours or more.

## Families — family composition

| Family composition             | New South Wales | %    | Australia | %    |
|--------------------------------|-----------------|------|-----------|------|
| Couple family without children | 709,524         | 36.6 | 2,291,987 | 37.8 |
| Couple family with children    | 887,358         | 45.7 | 2,716,224 | 44.7 |
| One parent family              | 310,906         | 16.0 | 959,543   | 15.8 |
| Other family                   | 32,438          | 1.7  | 102,559   | 1.7  |

Of the families in New South Wales, 45.7% were couple families with children, 36.6% were couple families without children and 16.0% were one parent families.

| Single (or lone) parents<br><i>Proportion of the total single (or lone) parent population</i> | New South Wales | %    | Australia | %    |
|-----------------------------------------------------------------------------------------------|-----------------|------|-----------|------|
| Male                                                                                          | --              | 17.8 | --        | 18.2 |
| Female                                                                                        | --              | 82.2 | --        | 81.8 |

In New South Wales, 17.8% of single parents were male and 82.2% were female.

## Families — employment status of couple families

| Employment status of parents in couple families<br><i>Labour force, parents or partners aged 15 years and over</i> | New South Wales | %    | Australia | %    |
|--------------------------------------------------------------------------------------------------------------------|-----------------|------|-----------|------|
| Both employed, worked full-time                                                                                    | 360,916         | 22.6 | 1,084,006 | 21.6 |
| Both employed, worked part-time                                                                                    | 63,106          | 4.0  | 203,596   | 4.1  |
| One employed full-time, one part-time                                                                              | 329,567         | 20.6 | 1,086,460 | 21.7 |
| One employed full-time, other not working                                                                          | 240,084         | 15.0 | 749,886   | 15.0 |
| One employed part-time, other not working                                                                          | 96,933          | 6.1  | 302,037   | 6.0  |
| Both not working                                                                                                   | 334,742         | 21.0 | 1,006,697 | 20.1 |
| Other (includes away from work)                                                                                    | 80,905          | 5.1  | 264,145   | 5.3  |
| Labour force status not stated (by one or both parents in a couple family)                                         | 90,630          | 5.7  | 311,381   | 6.2  |

In New South Wales, of couple families, 22.6% had both partners employed full-time, 4.0% had both employed part-time and 20.6% had one employed full-time and the other part-time.

The ABS Labour Force Survey provides the official estimates of Australia's unemployment rate. More information about Census and labour force status is provided in Understanding the Census and Census Data.

## Dwellings — dwelling structure

*Dwelling tables exclude visitor only and other non-classifiable households*

| Dwelling count               | New South Wales | %    | Australia | %    |
|------------------------------|-----------------|------|-----------|------|
| Occupied private dwellings   | 2,604,320       | 90.1 | 8,286,073 | 88.8 |
| Unoccupied private dwellings | 284,741         | 9.9  | 1,039,874 | 11.2 |

In New South Wales, 90.1% of private dwellings were occupied and 9.9% were unoccupied.

| Dwelling structure<br><i>Occupied private dwellings</i> | New South Wales | %    | Australia | %    |
|---------------------------------------------------------|-----------------|------|-----------|------|
| Separate house                                          | 1,729,820       | 66.4 | 6,041,788 | 72.9 |
| Semi-detached, row or terrace house, townhouse etc      | 317,453         | 12.2 | 1,055,016 | 12.7 |
| Flat or apartment                                       | 519,390         | 19.9 | 1,087,434 | 13.1 |
| Other dwelling                                          | 23,580          | 0.9  | 64,425    | 0.8  |

Of occupied private dwellings in New South Wales, 66.4% were separate houses, 12.2% were semi-detached, row or terrace houses, townhouses etc, 19.9% were flats or apartments and 0.9% were other dwellings.

| Number of bedrooms<br><i>Occupied private dwellings</i> | New South Wales | %    | Australia | %    |
|---------------------------------------------------------|-----------------|------|-----------|------|
| None (includes bedsitters)                              | 17,157          | 0.7  | 39,769    | 0.5  |
| 1 bedroom                                               | 157,194         | 6.0  | 411,252   | 5.0  |
| 2 bedrooms                                              | 577,675         | 22.2 | 1,562,759 | 18.9 |
| 3 bedrooms                                              | 970,001         | 37.2 | 3,403,190 | 41.1 |
| 4 or more bedrooms                                      | 816,405         | 31.3 | 2,670,758 | 32.2 |
| Number of bedrooms not stated                           | 65,888          | 2.5  | 198,351   | 2.4  |
| Average number of bedrooms per dwelling                 | 3               | --   | 3.1       | --   |
| Average number of people per household                  | 2.6             | --   | 2.6       | --   |

In New South Wales, of occupied private dwellings 6.0% had 1 bedroom, 22.2% had 2 bedrooms and 37.2% had 3 bedrooms. The average number of bedrooms per occupied private dwelling was 3. The average household size was 2.6 people.

| Tenure<br><i>Occupied private dwellings</i> | New South Wales | %    | Australia | %    |
|---------------------------------------------|-----------------|------|-----------|------|
| Owned outright                              | 839,665         | 32.2 | 2,565,695 | 31.0 |
| Owned with a mortgage                       | 840,004         | 32.3 | 2,855,222 | 34.5 |
| Rented                                      | 826,922         | 31.8 | 2,561,302 | 30.9 |
| Other tenure type                           | 23,968          | 0.9  | 78,994    | 1.0  |
| Tenure type not stated                      | 73,763          | 2.8  | 224,869   | 2.7  |

Of occupied private dwellings in New South Wales, 32.2% were owned outright, 32.3% were

owned with a mortgage and 31.8% were rented.

## Dwellings — household composition

| Household composition              | New South Wales | %    | Australia | %    |
|------------------------------------|-----------------|------|-----------|------|
| Family households                  | 1,874,524       | 72.0 | 5,907,625 | 71.3 |
| Single (or lone) person households | 620,778         | 23.8 | 2,023,542 | 24.4 |
| Group households                   | 109,004         | 4.2  | 354,917   | 4.3  |

In New South Wales, of all households, 72.0% were family households, 23.8% were single person households and 4.2% were group households.

| Household income                     | New South Wales | %    | Australia | %    |
|--------------------------------------|-----------------|------|-----------|------|
| Less than \$650 gross weekly income  | --              | 19.7 | --        | 20.0 |
| More than \$3000 gross weekly income | --              | 18.7 | --        | 16.4 |

In New South Wales, 19.7% of households had a weekly household income of less than \$650 and 18.7% of households had a weekly income of more than \$3000.

## Dwellings — mortgage & rent

*Proportions are calculated using all tenure types for occupied private dwellings. This excludes visitor only and other non-classifiable households.*

| Rent weekly payments                                                           | New South Wales | %    | Australia | %    |
|--------------------------------------------------------------------------------|-----------------|------|-----------|------|
| Median rent                                                                    | 380             | --   | 335       | --   |
| Households where rent payments are less than 30% of household income           | --              | 87.1 | --        | 88.5 |
| Households with rent payments greater than or equal to 30% of household income | --              | 12.9 | --        | 11.5 |

The number of households where rent payments were 30% or more of an imputed income measure are expressed in this table as a proportion of the total number of households in an area (including those households which were not renting, and excluding the small proportion of visitor-only and other non-classifiable households). The nature of the income imputation means that the reported proportion may significantly overstate the true proportion.

| Mortgage monthly repayments                                                          | New South Wales | %    | Australia | %    |
|--------------------------------------------------------------------------------------|-----------------|------|-----------|------|
| Median mortgage repayments                                                           | 1,986           | --   | 1,755     | --   |
| Households where mortgage repayments are less than 30% of household income           | --              | 92.6 | --        | 92.8 |
| Households with mortgage repayments greater than or equal to 30% of household income | --              | 7.4  | --        | 7.2  |

The number of households where mortgage repayments were 30% or more of an imputed income measure are expressed in this table as a proportion of the total number of households in an area (including those households which were renting, and excluding the small proportion of visitor only and other non-classifiable households). The nature of the income imputation means that the reported proportion may significantly overstate the true proportion.



## Dwellings — number of motor vehicles

| Number of registered motor vehicles | New South Wales | %    | Australia | %    |
|-------------------------------------|-----------------|------|-----------|------|
| None                                | 239,625         | 9.2  | 623,829   | 7.5  |
| 1 motor vehicle                     | 946,159         | 36.3 | 2,881,485 | 34.8 |
| 2 motor vehicles                    | 887,849         | 34.1 | 2,999,184 | 36.2 |
| 3 or more vehicles                  | 435,053         | 16.7 | 1,496,382 | 18.1 |
| Number of motor vehicles not stated | 95,623          | 3.7  | 285,197   | 3.4  |

In New South Wales, 36.3% of occupied private dwellings had one registered motor vehicle garaged or parked at their address, 34.1% had two registered motor vehicles and 16.7% had three or more registered motor vehicles.

| Dwelling internet connection        | New South Wales | %    | Australia | %    |
|-------------------------------------|-----------------|------|-----------|------|
| Internet not accessed from dwelling | 381,709         | 14.7 | 1,172,415 | 14.1 |
| Internet accessed from dwelling     | 2,149,040       | 82.5 | 6,892,165 | 83.2 |
| Not stated                          | 73,565          | 2.8  | 221,494   | 2.7  |

In New South Wales, 82.5% of households had at least one person access the internet from the dwelling. This could have been through a desktop/laptop computer, mobile or smart phone, tablet, music or video player, gaming console, smart TV or any other device.

## People characteristics - Aboriginal and/or Torres Strait Islander peoples

| People characteristics                                          | New South Wales | %    | Australia | %    |
|-----------------------------------------------------------------|-----------------|------|-----------|------|
| <i>Count based on place of usual residence on Census night.</i> |                 |      |           |      |
| Male                                                            | 107,368         | 49.7 | 322,171   | 49.6 |
| Female                                                          | 108,809         | 50.3 | 326,996   | 50.4 |
| Median age                                                      | 22              | --   | 23        | --   |

In New South Wales, 49.7% of Aboriginal and/or Torres Strait Islander people were male and 50.3% were female. The median age was 22 years.

## Dwelling characteristics - Aboriginal and/or Torres Strait Islander households

*Dwelling tables exclude visitor only and other non-classifiable households. These tables represent occupied private dwellings where at least one Aboriginal and/or Torres Strait Islander person was present*

| Dwelling characteristics                                                                                 | New South Wales | %  | Australia | %  |
|----------------------------------------------------------------------------------------------------------|-----------------|----|-----------|----|
| <i>Occupied private dwellings where at least one person was Aboriginal and/or Torres Strait Islander</i> |                 |    |           |    |
| Average number of people per household                                                                   | 3.1             | -- | 3.2       | -- |
| Average number of persons per bedroom                                                                    | 1               | -- | 1         | -- |
| Median weekly household income                                                                           | 1,214           | -- | 1,203     | -- |

a) There has been change in methodology used to calculate the average number of persons per bedroom. To compare the time series for average number of persons per bedroom please refer to Understanding the Census and Census Data

In New South Wales, for dwellings occupied by Aboriginal and/or Torres Strait Islander people, the average household size was 3.1 persons, with 1



persons per bedroom. The median household income was \$1,214.

| <b>Mortgage and rent</b><br><i>Occupied private dwellings where at least one person was Aboriginal and/or Torres Strait Islander</i> | <b>New South Wales</b> | <b>%</b> | <b>2011</b> | <b>%</b> | <b>Australia</b> | <b>%</b> |
|--------------------------------------------------------------------------------------------------------------------------------------|------------------------|----------|-------------|----------|------------------|----------|
| Median weekly rent                                                                                                                   | 270                    | --       | 250         | --       |                  |          |
| Median monthly mortgage repayments                                                                                                   | 1,733                  | --       | 1,660       | --       |                  |          |

In New South Wales, for dwellings occupied by Aboriginal and/or Torres Strait Islander people, the median weekly rent was \$270 and the median monthly mortgage repayment was \$1,733.

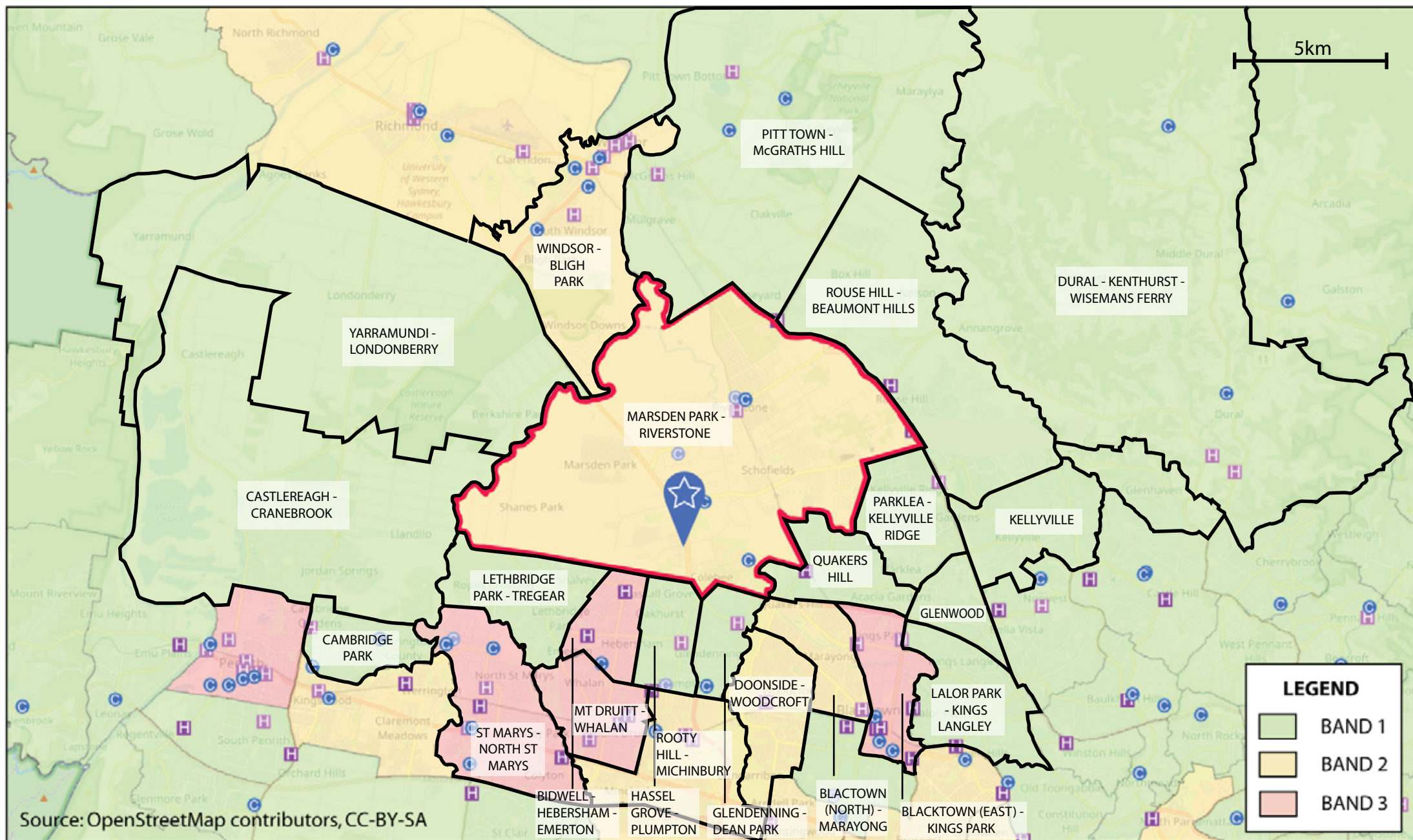
**LATEST ISSUE** Released at 11:30 AM (AEST) 23/10/2017

Small random adjustments have been made to all cell values to protect the confidentiality of data. These adjustments may cause the sum of rows or columns to differ by small amounts from the table totals. For further information, go to the [User Guide for QuickStats](#).

Data reported for Australia and Other Territories now includes Norfolk Island, following an amendment to the *Acts Interpretation Act, 1901*. Because Norfolk Island has not previously been included in the Census, any 2011 benchmarks will not include Norfolk Island.

The information contained in this QuickStat has been produced by the Australian Bureau of Statistics | It contains data from the 2016 Census of Population & Housing held on 9 August 2016 | Release date of this QuickStat was 23 October 2017 | Some values may have been adjusted to avoid release of confidential data | These adjustments may have a significant impact on the calculated percentages in QuickStats | For more information refer to Introduced Random Error in the 2016 Census Dictionary. For further enquiries contact the ABS National Information and Referral Service on 1300 135 070 | [www.abs.gov.au/census](http://www.abs.gov.au/census)

This page last updated 3 September 2018



**Design Collaborative**  
 304 /105 Pitt St Sydney  
 Ph: 9262 3200  
 Fax: 9262 3601

# **PLAN160776/1** **5KM RADIUS** **MARSDEN PARK-RIVERSTONE SA2**

