

© Russell Corporate Advisory 2023. All rights reserved. Except as expressly permitted by the Copyright Act 1968, no part of this document may be reproduced or copied in any form or by any means without the prior written permission of Russell Corporate Advisory.



MILTON ULLADULLA EX-SERVOS CLUB LIMITED LIQC300231674

CLASS 1 LOCAL IMPACT ASSESSMENT

GAMING MACHINE THRESHOLD INCREASE

212-222 Princes Highway Ulladulla NSW 2539

30 October 2023

Russell Corporate Advisory Services Pty Limited
ABN 87 111 049 999
Liability limited by a scheme approved under
Professional Standards Legislation



G:\Club Clients L-Z\Milton Ulladulla Ex Services\2022 LIA\LIA Drafting\LIA cover page.doc

Suite 904, Level 9
53 Walker Street
North Sydney NSW 2060
T 61 2 9957 6700
W www.russellcorporate.com.au

TABLE OF CONTENTS

1. EXECUTIVE SUMMARY	2
2. VENUE, LOCAL AREA & COMMUNITY	2
2.1 Local Area Maps	2
2.2 Local Demographic	2
2.3 Local Gaming Data	3
2.4 Club Venue	5
3. GAMBLING HARM MINIMISATION AND RESPONSIBLE GAMBLING MEASURES ...	5
3.1 Club Gaming Area	5
3.2 Responsible Gambling Measures	5
3.2.1 Mandatory Responsible Gambling Measures	5
3.2.2 Responsible Gambling Measures Above and Beyond	5
4. POSITIVE CONTRIBUTION	5
5. 2022 LIA STATEMENT OF REASONS	7
5.1 Community Contribution	7
5.7 Indigenous people	12
6. NOTIFY COMMUNITY	15
7. CONCLUSION	15
8. ANNEXURE A – Demography	15

1. EXECUTIVE SUMMARY

Contemporaneous with the submission of this Class 1 Local Impact Assessment (**LIA**), MILTON ULLADULLA EX-SERVOS CLUB LIMITED ABN 90 000 858 364 (**Applicant**) has submitted prescribed form “GML000 Gaming machine threshold increase where LIA required”.

Milton Ulladulla Ex-Servos Club Limited LIQC300231674 (**Club**) is located at 212-222 Princes Hwy ULLADULLA NSW 2539 within the Shoalhaven Local Government Area (**LGA**) and within the Ulladulla Statistical Area Level 2 (**SA2**) and within the Illawarra & Southern NSW GambleAware region.

The SA2 of Ulladulla is classified as a Band 2 for the purposes of section 33 *Gaming Machines Act (NSW) 2001 (Act)*. The Club has 114 Gaming Machine Entitlements (**GME**) currently and now seeks a low range increase of 20 to take its Gaming Machine Threshold (**GMT**) of 114 to 134.

The Club has had regard for, inter alia, the NSW Independent Liquor and Gaming Authority’s (**ILGA**) “*Guideline 16 - Late-night gaming applications*” and Liquor & gaming NSW’s (**LGNSW**) “*Gaming Plan of Management guidance Fact sheet FS3160*” in preparing its Gaming Plan of Management and has devised a comprehensive Gaming Plan of Management (**GPOM**) that includes responsible gambling measures that exceed those required by legislation.

In the event that the GMT increase is approved, the Club undertakes to make a sizeable contribution to the Responsible Gambling Fund, as calculated in accordance with LGNSW’s Class 1 Local Impact Assessment process guidelines, to meet the requirement under section 36(3)(c) of the Act “*to provide a positive contribution towards the local community where the venue is situated*”.

We note that on 19 December 2022 the Applicant submitted a Class 1 LIA (**2022 LIA**), which is attached as **Annexure A** for ease of reference. The 2022 was refused by ILGA on 21 June 2023. A statement of ILGA’s reasons for the refusal dated 31 August 2023 (**SOR**) was received on 18 September 2023 which is attached as **Annexure B**. The SOR noted that the 2022 LIA process met the relevant procedural requirements.

2. VENUE, LOCAL AREA & COMMUNITY

Refer to the attached Annexure A, 2022 LIA, section 2 for details as to the subject venue, local area and community, which information is still largely current.

2.1 Local Area Maps

Refer Annexure A section 2.1.

2.2 Local Demographic

Refer Annexure A section 2.2 and note that the statistics quoted therein were based on 2021 census data however 2021 Socio-Economic Indexes for Areas (**SEIFA**) data was not available at that time and so below we update the demographic snapshot

table to include updated SEIFA data and other Australian Bureau of Statistics (**ABS**) data as referenced in the SOR.

Demographic Snapshot

2021 census / 2021 SEIFA	Ulladulla (SA2)	LGA	NSW	Australia
Population	17,026	108,531	8,072,163	25,422,788
Median age	52	48	39	38
Female %	51.7%	50.5%	50.6%	50.7%
Male %	48.3%	49.5%	49.4%	49.3%
Indigenous	4.1%	6.5%	3.4%	3.2%
18+ Population %	81.4%	80.8%	78.0%	78.0%
55+ Population %	47.1%	42.8%	29.6%	29.1%
20-24yrs Population %	3.3%	4.40%	6.1%	6.2%
English only at home	90.3%	88.4%	67.6%	72.0%
Lone Person Household	28.80%	28.50%	25.00%	25.60%
SEIFA (IRSAD) Score (Decile)	995 (5)	980 (6)	-	-
SEIFA (IRSAD) Score (Decile)	954 (4)	949 (5)	-	-
SEIFA (IEO) Score (Decile)	994 (5)	939 (5)	-	-
Unemployed (aged 15+ in labour force)	4.2%	4.9%	4.9%	5.1%
Not in labour force (aged 15+)	47.1%	48.8%	35.5%	33.1%
Worked part-time (aged 15+)	42.9%	37.5%	29.7%	31.2%

We reiterate commentary in the 2022 LIA that the median age and the percentage of the population aged 15 years or over not participating in the workforce and the rate of part-time workers are all significantly higher than the respective rates for NSW and Australia. These statistics support out initial observation that the local area is popular with retirees and semi-retirees.

We also reiterate that the NSW Government has projected that the resident population of the Shoalhaven LGA and Ulladulla SA2 areas are to grow at a much faster pace than for NSW as a whole. The population of the Ulladulla SA2 is forecast to grow by 42% over the next two decades (Shoalhaven LGA +34%; NSW +21%).

With regard to the venue, we reiterate that the Club's mandatory gaming shutdown hours are from 3:00am to 9:00am on weekdays and from 4:00am until 10:00am on weekends and public holidays.

2.3 Local Gaming Data

Refer Annexure A section 2.3 for commentary and which we update as follows:

With reference to the LGNSW Licensed Premises list as at 3 October 2023, the total Gaming Machine Threshold for the Shoalhaven LGA was 1,678 and for Ulladulla SA2 was 383.

The below table indicates that the addition of 20 gaming machines to the Local Community will have a marginal impact and especially so as the population grows:-

Gaming Machines Per Capita

EGM Density (per capita)	Ulladulla (SA2)	Shoalhaven LGA
Population (2021 census)	17,026	108,531
Population (2041 forecast)	24,280	145,527
% Growth (forecast to 2041)	43%	34%
# EGM GMT (current)	387	1,683
GMT increase (as contemplated herein)	20 (+5.2%)	20 (+1.2%)
# EGM GMT (assumed)	407	1,703
EGM per 1,000 pop. (current 2021)	23	16
EGM per 1,000 pop. (assumed 2021)	24	16
EGM per 1,000 pop. (assumed 2041)	17	12

Source: LGNSW, ABS, NSW Planning Portal

For the Ulladulla SA2, LGNSW reported total annual gaming machine net profit in the amount of \$15,442,534 for 2019 (for the year ended 31 May 2019 for clubs and year ended 30 June 2019 for hotels), being the most current SA2 gaming data publicly available. LGNSW also reported therein that the 2019 average annual net profit per gaming machine entitlement or permit in the Ulladulla SA2 was \$42,541.

For the Shoalhaven LGA, LGNSW reported total annual gaming machine net profit for clubs in the amount of \$78,207,509 for the year ended 31 May 2023 and from which we calculate the average annual net profit per club gaming machine in the Shoalhaven LGA was approximately \$56,652.

For the Shoalhaven LGA, LGNSW reported total annual gaming machine net profit for hotels in the amount of \$17,915,123 for the year ended 30 June 2023 and from which we calculate the average annual net profit per hotel gaming machine in the Shoalhaven LGA was approximately \$79,095.

For the Shoalhaven LGA, for pubs and clubs combined in 2022/23, LGNSW reported total annual gaming machine net profit in the amount of \$96,122,632 (being for the year ended 31 May 2023 for clubs and year ended 30 June 2023 for hotels) and from which we calculate the average annual net profit per gaming machine in the Shoalhaven LGA was approximately \$59,815.

For the year ended 30 September 2023 the Club reported total gaming machine net profit in the amount of \$9,983,600 and so the Club's average annual net profit per gaming machine for that period was \$103,058. We note that the return to the Club per gaming machine if all gaming machine entitlements were utilised during that period would have been only \$86,786.

The above gaming machine figures include Goods and Services Tax imposed at a rate of 10%.

2.4 Club Venue

Refer Annexure A section 2.4.

We reiterate that the Club's mandatory gaming shutdown hours are from 3:00am to 9:00am on weekdays and from 4:00am until 10:00am on weekends and public holidays.

3. GAMBLING HARM MINIMISATION AND RESPONSIBLE GAMBLING MEASURES

Refer Annexure A section 2.4.

3.1 Club Gaming Area

Refer Annexure A section 3.2

3.2 Responsible Gambling Measures

Refer Annexure A section 3.3

3.2.1 Mandatory Responsible Gambling Measures

Refer Annexure A section 3.3.1.

3.2.2 Responsible Gambling Measures Above and Beyond

Refer Annexure A section 3.3.2.

Further, the Applicant recognises from recent research that the risk of gambling harm is elevated after midnight. Accordingly, should this LIA application be approved, the Applicant undertakes to cease operation by midnight of 20 electronic gaming machines operated with the Gaming Machine Threshold increase now sought. However, noting that gaming machine occupancy for the Club reduces significantly after midnight and the threshold now sought is to provide patrons with a choice and variety of gaming machines during peak times during the day time, and in particular during the busy summer months.

We submit that the above measures exceed and go "Above & Beyond" that required by legislation and, most importantly, will reduce the risk of gambling harm at the Club and instil responsible gambling practices in staff and patrons.

4. POSITIVE CONTRIBUTION

In the event that the GMT increase proposed herein is approved, the Applicant undertakes to provide a positive contribution in the form of a cash contribution to the Responsible Gambling Fund in accordance with section 36A of the Act and as prescribed by the Class 1 Local Impact Assessment process guidelines (**Community Benefit**).

The Community Benefit calculated as prescribed by ILGA's GL4014 Class 1 Local Impact Assessment process guideline, based on the Club's average gaming machine net profit per gaming machine (x96) for the year ended 30 September 2023, we estimate a total contribution sum in the amount of \$1,545,875, payable in 5 equal instalments over 5 years.

The Club provides a safe and welcoming venue and has a suite of governance policies, including a Gaming Plan of Management, and provides a high level of customer service and actively supports its community.

The Applicant also remits taxes in accordance with the *Gaming Machines Tax Act* and will continue to do so.

As noted above, the Applicant has implemented a number of responsible gambling measures that go "above and beyond" those required by law.

The Applicant participates in the ClubGrants scheme and for the most recent year ended 31 August 2023 the Club supported the following organisations:-

CLUBGRANTS 2022/23	Project Name
Christmas Hampers for the needy - via South Coast Business & Financial Solutions	Donation for hampers
Euchre	Vouchers for prizes
Jindelara Cottage - Lions Ulladulla District Community Foundation	Cottage Expansion Project
Kokoda Leadership program - Kokoda Central Coast - KYLC Benevolent Fund Limited	Donation
Kokoda Youth Leadership Challenge - KYLC Benevolent Fund Limited	Donation for 4 students
Koori Kids (Anzac Schools initiative)	Donation for Ulladulla Primary
Makai Paddlers	Alcohol donation for Makai Cup
Marine Rescue Kioloa	Replacement Air Conditioning
Marine Rescue Ulladulla	Facilities maintenance & Donation
Milton District Band	New uniforms
Milton Follies	Donation of Spamalot & Turning 21 concert
Mollymook Outrigger Canoe Club	Capacity Building Project
Mollymook Surf Club Easter Guards	Easter Guards
Mollymook Surf Club Nippers	Nippers shirts
Mollymook Surf Club Ocean Swim	Donation
Mollymook Women's Golf Charity Day	Donation - funds to go to Safe Waters
MU Basketball Association	Prizes for "All Stars" Day
MU Business Chamber - Christmas Carols	Donation
MU District Soup Kitchen	Free food for the homeless
MU Football Club	Donation & raffles
MU Junior Bulldogs	Donation & raffles

CLUBGRANTS 2022/23	Project Name
MU Junior Touch football	Donation
MU Men's Shed Inc.	Childrens Toys
MU RSL Sub-Branch - Defibrillator	Defibrillator
MU RSL Sub-Branch - KYLC Benevolent fund (Kokoda)	Donation
MU Videography Club	New editing computer
Pigeon House RSL Day Club	Socialisation meetings
Safe Waters Community Care Inc.	Weekend Help for the Homeless
South Coast Island book launch	Donation
The Entertainers	Donation
Thirst Box Rally	Donation
Triple 0 Ball	Donation
Ulladulla & Districts Netball Association	Donation
Ulladulla Emotional Disturbance Unit	Ulladulla Multi Categorical Support Unit
Ulladulla High School	Scholarships
Ulladulla Public School	Support Literacy & Numeracy Learning
Ulladulla United Cricket Club	Donation

5. 2022 LIA STATEMENT OF REASONS

We refer to ILGA's Statement of Reasons dated 31 August 2023 (**SOR**) outlining the reasons for its refusal of the Applicant's 2022 LIA.

We note that the SOR stated that the 2022 LIA process met the relevant procedural requirements.

In summary, the LIA was refused on the following basis:

"The profit per gaming machine is 80% higher than comparable venues. Noting the established correlation between late night gaming and gambling related harm and the venue's post-midnight operating hours, above average participation rates and a high representation of young and indigenous people, the proposed increase by a further 20 electronic gaming machines (EGMs) has the potential to exacerbate problem gambling in the community.

The application is subject to a Local Impact Assessment (LIA). The Authority has declined to approve the LIA as we are not satisfied that there was a positive contribution to the local community, noting that the proposed contribution was not consented to by the applicant."

We respond to particular points within the SOR below.

5.1 Community Contribution

The Applicant, at the fifth paragraph of the 2022 LIA provided an undertaking as follows:

“In the event that the GMT increase is approved, the Club undertakes to make a sizeable contribution to the Responsible Gambling Fund in accordance with the Class 1 Local Impact Assessment process guidelines”.

The Applicant’s 2022 LIA also highlighted the inequity of the Responsible Gambling Fund (**RGF**) calculation when compared to a direct local competitor venue within the same SA2 as the Applicant and which had only recently had a GMT increase approved.

The Applicant sought to highlight that the RGF calculation based on gaming machines in use as fewer gaming machines were in use due to social distancing due to COVID. Due to space limitations in the venue, the Applicant was required to remove gaming machines. The reduction of machines in use resulted in a higher than usual return per gaming machine.

Further, the competitor venue RGF contribution was not adjusted for two months of cessation of trade due to COVID health orders. We understand that RGF contributions were ordinarily adjusted by LGNSW to account for periods of cessation of trade however an adjustment was not made in the instance of the local competitor club.

The Applicant was seeking to merely highlight the inequity in the RGF calculation which largely arose from the distortion to gaming figures per machine from the impacts of the COVID pandemic and resulting health orders.

For clarity, we reiterate that, in the event that the GMT increase is approved, the Club undertakes to make a sizeable contribution to the Responsible Gambling Fund in accordance with the Class 1 Local Impact Assessment process guidelines the calculation of which is estimated at section 4 above.

5.2 Positive Contribution

The SOR stated that *“the Authority has declined to approve the LIA as we are not satisfied that there was a positive contribution to the local community, noting that the proposed contribution was not consented to by the applicant.”*

As noted above, for the 2022 LIA and LIA herewith, *“In the event that the GMT increase is approved, the Club undertakes to make a sizeable contribution to the Responsible Gambling Fund in accordance with the Class 1 Local Impact Assessment process guidelines”.*

Section 36(3)(c) of the Act requires a *“provide a positive contribution towards the local community where the venue is situated”* and such positive contribution is as set out in the *Class 1 Local Impact Assessment process guidelines*.

Compare to section 36(3)(d) of the Act for a Class 2 LIA which requires an overall positive impact on the local community”.

5.3 Gaming Intensity

The SOR noted there was higher gaming intensity at the venue against comparable venues.

As noted above, due to space limitations in the Club venue, the Applicant was required to remove gaming machines. The reduction of machines in use resulted in a higher than usual return per gaming machine.

We note that the quantum of the Club's gaming machines in use currently was reduced to allow for COVID social distancing thus increasing the return to the Club per gaming machine and due to space limitations, the Club has not reinstated gaming machine numbers to pre-COVID levels.

The Club has recently experienced an overall lift in performance across all departments and not just gaming, due to marketing initiatives and customer service standards. The Club's standing in the community attracts members and patrons. For example, the Club's restaurant revenue reported for the September 2023 quarter was 9% higher than that reported in the prior year. For the year ended 30 June 2023, food and beverage trading was 44% and 32% respectively up on the prior year.

The LIA increase now sought is to respond to customer expectations and local competition. In anticipation of a growing population, the Club is in the process of preparing a further development application to renovate the Club and further expand its floorspace. The Club's renovation plans were set back due to the COVID pandemic.

Refer attached **Annexure C** for a concept drawing of the proposed expansion of the Club's floorspace. The Club plans to renovate and expand the Club in a staged fashion and to date has received development consent from Shoalhaven City Council as follows:

Development Application 2016 - DA16/2369

Development Application 2018 - DS18/1189

Development Application 2020 - DS20/1150

Development Application 2021 - DS21/1382

If the threshold increase contemplated herein is approved and once the Club renovation has been completed, it is anticipated that the gaming threshold will be fully utilised and that the return to the Club per gaming machine may be lower than comparable venues.

5.4 Late Night Gaming

The Club's business model is centred around the long-term sustainability of the Club and the health and safety of its patrons. Accordingly, it is in the Club's interest to address the risk of potential gambling harm.

The Club has responded to recent research into late night gaming and has implemented specific measures to assist patrons at risk of problem gambling. The Club's Secretary Manager is well acquainted with members and gambling patterns and is minded to informally query members that display potential problem gambling behaviours.

The Club's Gaming Plan of Management has been assessed by ILGA as "exceeding the Authority's standard for a venue of this profile and satisfying the Authority's decision matrix" as noted in the SOR.

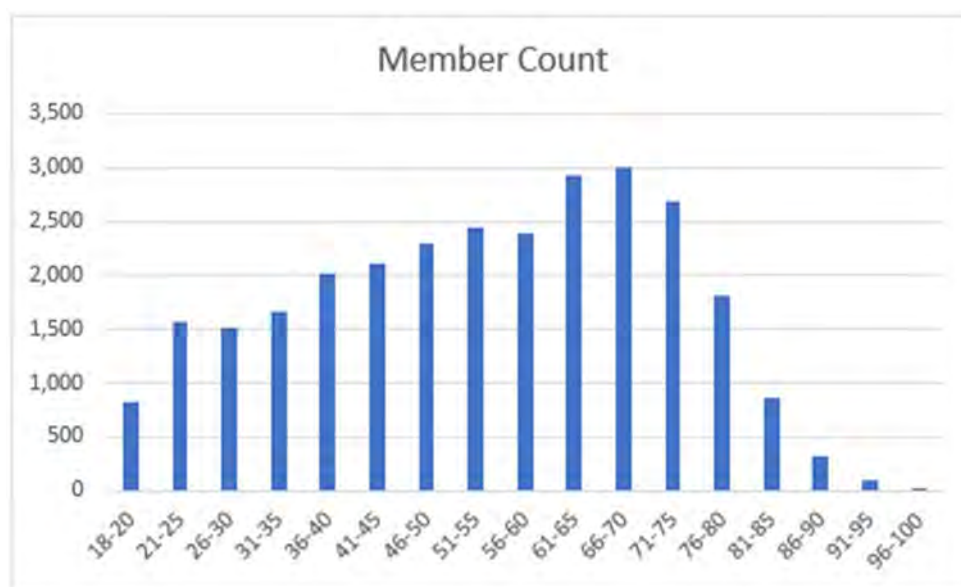
The Club's gaming machine occupancy rates after midnight are low. An increase of gaming machine threshold is intended to serve needs of recreational gamblers during the day time when machines are operating at higher occupancy rates. If this LIA is approved, the Club would be agreeable to a condition that the additional 20 gaming machines contemplated herein will not operate after midnight.

5.5 Young People

The SOR noted the "venue's....high representation of young.....people".

The Applicant contends that the above statement is incorrect.

The Club's membership breakout by age is summarised in the below chart:.



The Club's membership base is centred around 61 to 75 years of age.

The Club's membership has grown from approximately 12,500 to 28,400 over the last two years.

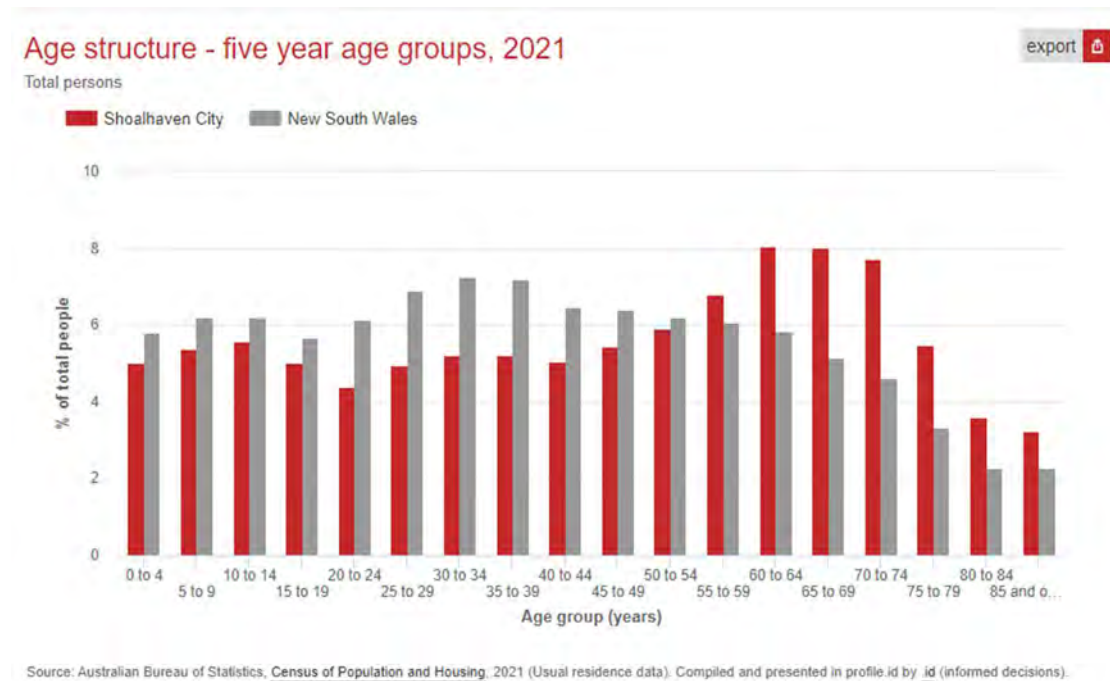
Below is a summary of the 2021 median age for the local area, NSW and Australia.

2021 SEIFA	Ulladulla (SA2)	LGA	NSW	Australia
Median age	52	48	39	38

Source: ABS

The median age for the local area was significantly higher than NSW and Australia.

Below is a summary of the five-year age brackets of LGA as compared to NSW:-



Source: Profile ID

The LGA population for the 50 - 54 age bracket and all below that age bracket are less than the comparable age brackets for NSW.

The Club's members and the local area has a high representation of people aged over 55 years. As highlighted in the 2022 LIA, the local coastal area is popular for retirees and semi-retirees and this is reflected in the aging of the Club's membership base.

5.6 Level of highest educational attainment

The SOR noted a risk indicator was the Shoalhaven LGA proportion of total population aged 15 years and over who have completed year 12 or equivalent or higher. The SOR noted that the LGA was below the NSW average.

In this regard, the 2021 census data for the LGA compared to NSW was as follows:

Highest level of secondary schooling completed			
Shoalhaven City - Total persons (Usual residence)		2021	
Level of schooling	Number	%	New South Wales %
Year 8 or below	4,329	4.7	3.8
Year 9 or equivalent	8,443	9.3	5.6
Year 10 or equivalent	28,440	31.2	20.1
Year 11 or equivalent	6,297	6.9	5.8
Year 12 or equivalent	36,031	39.5	56.9
Did not go to school	304	0.3	1.1
Not stated	7,350	8.1	6.7
Total persons aged 15+	91,194	100.0	100.0

Source Profile ID

As noted above, the local population skews toward older age brackets. The Applicant contends that the proportion of the local population that completed Year 12 is a function of the age profile of the community as there has been a long-term trend of increasing retention rate to Year 12 in Australia.

It was only in 2010 that the compulsory school leaver age was increased from 15 years to 17 years, except in certain circumstances (eg. apprenticeships and demonstrated full time employment). For the majority of local residents, at the time, it was not compulsory to attend school beyond 15 years of age.

The lower Year 12 completion rate is a product of the relatively older local population.

5.7 Indigenous people

The SOR noted the Club is located in an area with a high representation of indigenous people.

See below summary of 2021 census data for the respective percentages of the population that identified as Aboriginal or Torres Strait Islander:

2021 census	Ulladulla (SA2)	LGA	NSW	Australia
Indigenous	4.1%	6.5%	3.4%	3.2%

Source: ABS

The 2021 Census indicated the Ulladulla SA2 had an Aboriginal and Torres Strait Islander population of 4.1%, compared to 3.4% in New South Wales. This represents a difference of less than 1 person in 100 in the Ulladulla SA2 when compared to New South Wales, which the Applicant contends is not a high representation compared to New South Wales.

The Club welcomes members and patrons regardless of colour or ethnicity whilst acknowledging the outcomes of recent problem gambling research identifying certain socio-demographic risk factors.

5.8 Lone Person Household

The SOR noted a risk indicator was the proportion of lone person households in the local area. The SOR noted that the Club's LGA was above the New South Wales average for lone person households.

2021 census data indicates was as follows:

2021 census	Ulladulla (SA2)	LGA	NSW	Australia
Lone Person Household	28.80%	28.50%	25.00%	25.60%

Source: ABS

The Club contends that the difference to the NSW average is marginal, with less than 4 percentage points difference and not a significant difference that would impact the assessment of whether the requested GMT increase would provide a positive contribution to the local community.

We also note that there are many suburbs with a much higher percentage of lone person households, for example the suburb of Woollahra in Sydney, which has the highest level of advantage in Australia, and has 31.7% of its population in lone person households which is above the New South Wales average.

Further, the slightly elevated lone person households for the local area is likely to be mostly attributed to the relatively aged local population.

5.9 Level of Disadvantage

The SOR noted that "Data as a 2016 shows that Ulladulla and the Shoalhaven LGA were relatively disadvantaged in terms of household income and residents in skilled occupations compared to other suburbs and LGAs in NSW".

Below is a summary of local SEIFA data for 2021.

2021 SEIFA	Ulladulla (SA2)	LGA
SEIFA (IRSD) Score (Decile)	995 (5)	980 (6)
SEIFA (IRSAD) Score (Decile)	954 (4)	949 (5)
SEIFA (IEO) Score (Decile)	994 (5)	939 (5)

The above SEIFA data places the local area within the middle range of advantage/disadvantage.

As extensively highlighted in the 2022 LIA, the local population is comprised of many retirees or semi-retirees who are drawn to the coastal lifestyle and actively choose to not participate in the workforce or to otherwise work part time and therefore this cohort is in receipt of less income.

The Applicant notes that the Authority's process that requires the preparation of a local impact assessment and provision of a significant financial contribution to fund social wellbeing organisations that provide gambling-related services in the local community, already places a heavy weighting to address the level of disadvantage in the local community.

In other words, there is already a requirement to provide a positive contribution which takes into account the level of disadvantage in the local community. The SEIFA index has already been considered in determining LIA banding at the Club's location.

5.10 Local Gambling Participation Rates.

The SOR noted *"the gambling participation rate for poker machines and gaming machines being above average when compared to the NSW rate"*.

The SOR also noted that *"the local area exhibiting problem gambler prevalence on par with NSW and a below average rate of combined low risk, moderate risk and problem gamblers when compared to the NSW average"*.

The above findings indicate that whilst gaming machine participation might be relatively high, such participation is conducted responsibly.

For a coastal town with a relatively high proportion retirees/semi- retirees and visiting holiday makers we expect a component of such people to have spare time to seek entertainment in the form of gambling. Not surprisingly, the Club experiences higher levels of trade in the summer months, for example the Club's total income reported for January 2023 was 25% higher than July 2022 and 48% higher than July 2023.

6. NOTIFY COMMUNITY

In accordance with section 37 of the Regulation, within seven days of the making of the threshold increase application as contemplated herein, the Club will notify the local council, police, health district and community services providers, as prescribed by the Regulation, of the making of this application.

The Club will also, within seven days, advertise the making of this application by affixing the prescribed notice to the front of its premises and by placing an advertisement in a local newspaper, being the Milton Ulladulla Times in this instance.

The above notices and advertisements will invite the community to inspect this LIA and make submissions to the Authority within 60 days and direct the community to the LGNSW website for this purpose.

7. CONCLUSION

Based on the above findings and the Club's venue design, practices and Gaming Plan of Management as implemented by qualified staff, the Authority can be satisfied that:

- this Class 1 Local Impact Assessment complies with the Act;
- any gambling activities at the Club are conducted in a responsible manner and comply with and, in many instances exceed, mandatory responsible conduct of gambling obligations;
- the application, if granted, will result in a positive contribution to the local community as outlined above.

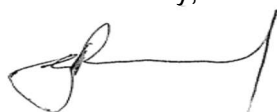
Accordingly, we respectfully submit that the Authority consider approval of the Gaming Machine Threshold increase as contemplated herein.

8. ANNEXURE A – DEMOGRAPHY

Attached as **Annexure D** is a "QuickStats" statistical summary of the Shoalhaven LGA as obtained from the Australian Bureau of Statistics. A QuickStats statistical summary for the Ulladulla SA2 is annexed to the 2022 LIA herewith at Annexure A.

Should you have any queries regarding the above, please do not hesitate to contact me on telephone 02 9957 6700.

Yours faithfully,



G A Russell
Director
Chartered Accountant

GML000

Gaming machine threshold increase where LIA required

Liquor & Gaming NSW

Before you complete this form

What this form is for

If you are a club or hotel and

- ▲ you wish to apply for a gaming machine threshold increase, and
- ▲ a local impact assessment (LIA) is required.

You need to lodge this application form and attach either a Class 1 or Class 2 LIA.

What you need to know

If you will be increasing the availability of gaming after midnight you may be captured by Guideline 16 - Late-night gaming applications, which sets out additional factors that the Independent Liquor & Gaming Authority may consider when reviewing applications involving late-night gaming.

Under section 36 of the *Gaming and Liquor Administration Act 2007* and section 307A of the *Crimes Act 1900* it is an offence to provide false or misleading information in this application.

A Class 1 LIA is required for venues seeking a threshold increase of:

- ▲ up to 40 in a Band 1 Local Statistical Area (LSA)
- ▲ up to 20 in a Band 2 Local Statistical Area (LSA)

A Class 2 LIA is required for venues seeking a threshold increase of:

- ▲ more than 40 in a Band 1 Local Statistical Area (LSA)
- ▲ more than 20 in a Band 2 Local Statistical Area (LSA)

Note

You **do not** need to submit an LIA if the GMT increase application is made at the same time as the entitlement transfer or lease and the club requesting the GMT increase is:

- ▲ situated in a Band 1 Statistical Area Level 2 (SA2) and the GMT increase (if approved), when added to the total of all other GMT increases approved over the previous 12 months, is 20 or less.
- ▲ located in the same SA2 as the venue from which the GME/s are transferred.
- ▲ located in the same Local Government Area (LGA) from which the GME/s are transferred, and the SA2 Band where the transferring venue is located is the same or higher than the SA2 Band where the venue requesting the GMT increase is located.
- ▲ located in adjoining SA2s (whether or not in the same LGA) as the venue from which the GME/s are transferred, and the SA2 Band of the transferring venue is the same or higher than the SA2 Band of the venue requesting the GMT increase.

You may need to complete a different application form. Look for gaming licence forms and applications at liquorandgaming.nsw.gov.au

Cost

- ▲ The fee for this application is available in the [gaming machine licence and application fee schedule](#).
- ▲ No GST applies.

How to lodge this form

@ gaming.applications@liquorandgaming.nsw.gov.au
Include 'GML000 Gaming machine threshold increase where LIA required' in the subject line.

Please provide all pages of this application and your payment. There's no need to attach this introduction page.

Need more information?

🔍 liquorandgaming.nsw.gov.au
@ [Contact us online](#)
☎ 1300 024 720

Your privacy

We will handle your personal information in accordance with the *Privacy and Personal Information Protection Act 1998*. It is being collected by Liquor & Gaming NSW and will be used for the purpose of processing your application and may be disclosed to other Government agencies for this purpose. All LIAs (both pending and determined) can be viewed on the LIA public register available online at liquorandgaming.nsw.gov.au. You have the right to request access to and correct details of, your personal information held by us. You can access further information on privacy at liquorandgaming.nsw.gov.au.

continue overleaf

Pre-lodgement checklist

Please ensure you have filled out the relevant sections and attached the required documents. If information is missing, processing this application will be delayed and the application may be withdrawn.

- ☐ I have answered all questions in Parts 1 to 4.
- ☐ I have ensured that the declaration in Part 5 has been read and signed.
- ☐ I have attached all documents required (see below).

Attachments

- ☐ A Class 1 or Class 2 LIA as required

How this request will be processed

When this request has been processed, all parties named on this form will receive a copy of the updated licence documents by email.

Explanation of terms

Term	Definition
Applicant	The person or organisation qualified to make this application. The applicant may nominate a legal or other representative to be their contact person regarding this application.
Gaming machine	A gaming machine, also known as a poker machine or a ‘pokie’, is an electronic device designed for gambling.
Gaming machine entitlement / poker machine permits	A venue must hold a gaming machine entitlement (GME) or poker machine permit (PMP) (hotels only) for each gaming machine operated.
Gaming machine threshold	The gaming machine threshold (GMT) is a number which limits how many gaming machine entitlements (GMEs), and for hotels, poker machine permits (PMPs) – that a club or hotel licence can hold. A venue must have a GME or PMP for each gaming machine operated. A hotel’s GMT cannot exceed 30.
Local impact assessment	A local impact assessment (LIA) may be required when a hotel or registered club applies to increase its gaming machine threshold to operate more gaming machines, or where a hotel or club changes location.
LIA public register	Details of determined and pending local impact assessments are available on the LIA public register on the L&GNSW website. The register contains a list of LIAs that clubs and hotels have lodged, together with an application to increase the GMT.

Gaming machine threshold increase where LIA required

OFFICE USE ONLY

GML000

By	<input type="checkbox"/> Email
Date lodged	<input type="text" value="DD / MM / YYYY"/>
Amount paid	<input type="text" value="\$"/>
Receipt no.	<input type="text"/>
Application no.	<input type="text"/>
Finalised by	<input type="text"/>
Date finalised	<input type="text" value="DD / MM / YYYY"/>
Notification issued	<input type="text" value="DD / MM / YYYY"/>

Daytime phone

Email

 What is the total internal floor space of the ~~new~~ premises in square metres?

 Is the premises part of a retail shopping centre or proposed retail shopping centre as defined in section 4 of the *Gaming Machines Act 2001*?
No ☒Yes ☐

If Yes, what is the name and address of the current or proposed shopping centre?

Is the application for a new premises?

☐ Yes☒ No
~~Are the premises within 200 metres of a school, place of public worship or hospital?~~
No ☐Yes ☐
~~If Yes, please provide a map showing the location of the relevant premises and the location of any school, place of public worship or hospital within 200 metres of the premises.~~

Part 2 Gaming machine threshold (GMT)

GMT for current premises?

Proposed GMT threshold for the premises?

Part 1 About the premises

Liquor licence

 LIQ

Premises name

Premises address

Suburb/town/city

State

Postcode

Local Government Area (LGA)

SA2

SA2 Band (select one)

☐ 1
 ☒ 2
 ☐ 3

continue overleaf

Part 3 Guideline 16 Late-night gaming applications

Are you licensed to trade past 2am any day?

☒ Yes

☐ No

Are you licensed to trade past midnight any day and are in a Band 3 SA2?

No ☒

Yes ☐

If Yes, describe how you will meet the requirements of [Guideline 16 - Late-night gaming applications](#)

Please refer accompanying Local Impact Assessment for details of measures and practices pertaining to responsible conduct of gambling and gambling harm minimisation measures.

Part 4 Local impact assessment (LIA) information

Type of LIA being lodged.

For information on what type of LIA is required, see the information sheet on the new LIA process at liquorandgaming.nsw.gov.au.

What type of Local Impact Assessment (LIA) is being lodged? (tick one only)

☒ Class 1

☐ Class 2

Lodge the applicable LIA submission with this form. See the information sheets at liquorandgaming.nsw.gov.au for guidelines on what the LIA submission needs to contain.

Part 5 Applicant declaration

- ▲ I declare that I am 18 years or older and I am authorised to lodge this application.
- ▲ I declare that the contents of this application including attachments are true, correct and complete and that I have made all reasonable inquiries to obtain the information required to complete the application.
- ▲ I undertake to immediately notify Liquor & Gaming NSW of any change to the information in this application, if the information changes before the application is determined.
- ▲ I acknowledge that under section 36 of the *Gaming and Liquor Administration Act 2007* and section 307A of the *Crimes Act 1900* it is an offence to provide false or misleading information in this application.
- ▲ I acknowledge that failure to provide all required information may result in refusal of the application.
- ▲ I understand that specific details I have supplied in this application may be 'personal information' under the *Privacy and Personal Information Protection Act 1998*. Personal information is any information or opinion that identifies an individual, or enables someone to identify an individual.
- ▲ I acknowledge that Liquor & Gaming NSW is collecting information to enable processing of the application. I also understand that they will use the information for its intended purpose only, store the information securely, and allow me to access and update the information. When processing this application, they may need to disclose personal information to other Government agencies.

Name of club secretary/hotel licensee

Darryl Bozicevic, Chief Executive Officer

Signature of club secretary/hotel licensee



Date

19 / 12 / 2022

continue overleaf

If the application is lodged by a legal or other representative, tell us:

Name of representative

Deanne Furlong

Representative's business name

Russell Corporate Advisory

Email

deanne.furlong@russellcorporate.com.au

Contact phone daytime

0 2 9 9 5 7 6 7 0 0

Address for correspondence

Suite 904, Level 9

53 Walker Street

Suburb/town/city

North Sydney

State

N S W

Postcode

2 0 6 0

Part 6 Payment for this application

The fee for this application is available in the [gaming machine licence and application fee schedule](#). Fill in the fee below.

Payment amount \$

Pay by credit card or PayPal® using the following link:

www.liquorandgaming.nsw.gov.au/applicationpayments

▲ Step 1

Click on the link or type the URL into your web browser

▲ Step 2

Follow the instructions online to complete the payment

▲ Step 3

When the lodgement fee is paid online you will receive a receipt number. Please record the receipt number below before lodging the application. Not providing this information may result in delays in processing your application.

Receipt number:

© Russell Corporate Advisory 2022. All rights reserved. Except as expressly permitted by the Copyright Act 1968, no part of this document may be reproduced or copied in any form or by any means without the prior written permission of Russell Corporate Advisory.



MILTON ULLADULLA EX-SERVOS CLUB LIMITED LIQC300231674

CLASS 1 LOCAL IMPACT ASSESSMENT

GAMING MACHINE THRESHOLD INCREASE

212-222 Princes Highway Ulladulla NSW 2539

19 December 2022

Russell Corporate Advisory Services Pty Limited
ABN 87 111 049 999
Liability limited by a scheme approved under
Professional Standards Legislation



Suite 904, Level 9
53 Walker Street
North Sydney NSW 2060
T 61 2 9957 6700
W www.russellcorporate.com.au

TABLE OF CONTENTS

1. EXECUTIVE SUMMARY	2
2. VENUE, LOCAL AREA & COMMUNITY	2
2.1 Local Area Maps	3
2.2 Local Demographic	5
2.3 Local Gaming Data	7
2.4 Club Venue	9
3. GAMBLING HARM MINIMISATION AND RESPONSIBLE GAMBLING MEASURES .	11
3.1 Suitably Qualified Staff	11
3.2 Club Gaming Area	12
3.3 Responsible Gambling Measures	12
3.3.1 Mandatory Responsible Gambling Measures	12
3.3.2 Responsible Gambling Measures Above and Beyond	15
4. POSITIVE CONTRIBUTION	18
5. NOTIFY COMMUNITY	20
6. CONCLUSION	20
7. ANNEXURE A – Demography	21

1. EXECUTIVE SUMMARY

Contemporaneous with the submission of this Class 1 Local Impact Assessment, MILTON ULLADULLA EX-SERVOS CLUB LIMITED ABN 90 000 858 364 (**Applicant**) has submitted prescribed form “GML000 Gaming machine threshold increase where LIA required”

Milton Ulladulla Ex-Servos Club Limited LIQC300231674 (**Club**) is located at 212-222 Princes Hwy ULLADULLA NSW 2539 within the Shoalhaven Local Government Area (**LGA**) and within the Ulladulla Statistical Area Level 2 (**SA2**) and within the Illawarra & Southern NSW GambleAware region.

The SA2 of Ulladulla is classified as a Band 2 for the purposes of section 33 *Gaming Machines Act (NSW) 2001 (Act)*. The Club has 114 Gaming Machine Entitlements (**GME**) currently and now seeks a low range increase of 20 to take its Gaming Machine Threshold (**GMT**) of 114 to 134.

The Club has had regard for, inter alia, the Authority’s “*Guideline 16 - Late-night gaming applications*” in preparing its Gaming Plan of Management and has devised a comprehensive Gaming Plan of Management (**GPOM**) that includes responsible gambling measures that exceed those required by legislation.

In the event that the GMT increase is approved, the Club undertakes to make a sizeable contribution to the Responsible Gambling Fund in accordance with the Class 1 Local Impact Assessment process guidelines.

2. VENUE, LOCAL AREA & COMMUNITY

The Club is located at 212-220 Princes Highway, Ulladulla, NSW 2539, being on the eastern side of the Princes Highway and approximately 1km south of the town centre of Ulladulla. Ulladulla is a coastal town approximately 230 kilometres south of Sydney and is south of Nowra and north of Batemans Bay.

For reference, the SA2 of Ulladulla encompasses an area that is approximately 14km from north to south and 6km wide and is comprised of the following suburbs:-

- Ulladulla
- Milton
- Narrawallee
- Mollymook Beach
- Mollymook
- Kings Point
- Burrill Lake
- Dolphin Point

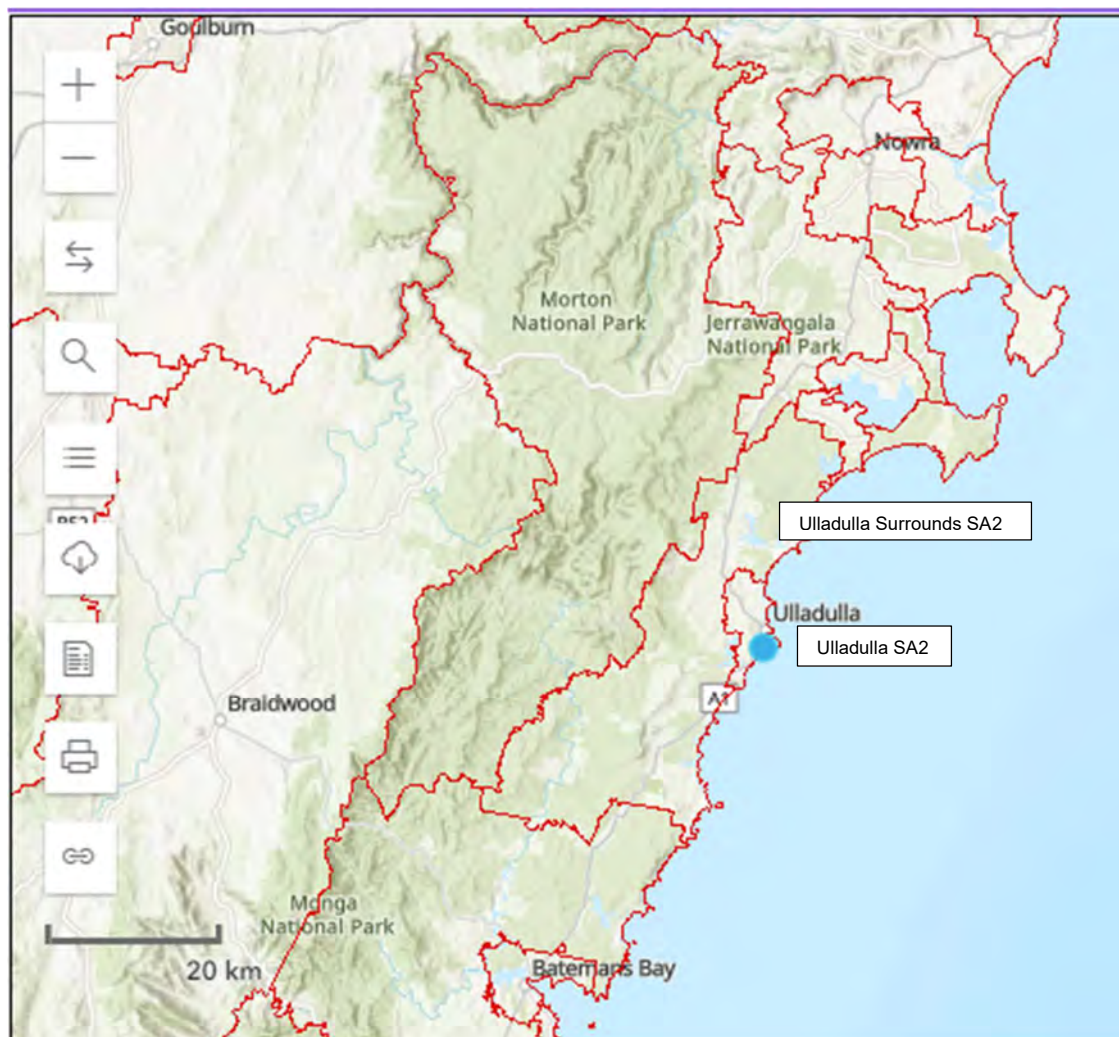
The SA2 of Ulladulla is surrounded by the Ulladulla Region SA2, being the only two SA2 areas within 5km of the Club.

To the north of the Club is mostly low-density residential housing and to the east is scrubland leading down to a non-patrolled beach. On the western side of the Princes Highway across from the Club is a designated light industrial area.

The Ulladulla area is mostly comprised of residents however, being a coastal area, the area attracts tourists during the summer months. Ulladulla and nearby Mollymook appeal to retirees and those seeking a sea change.

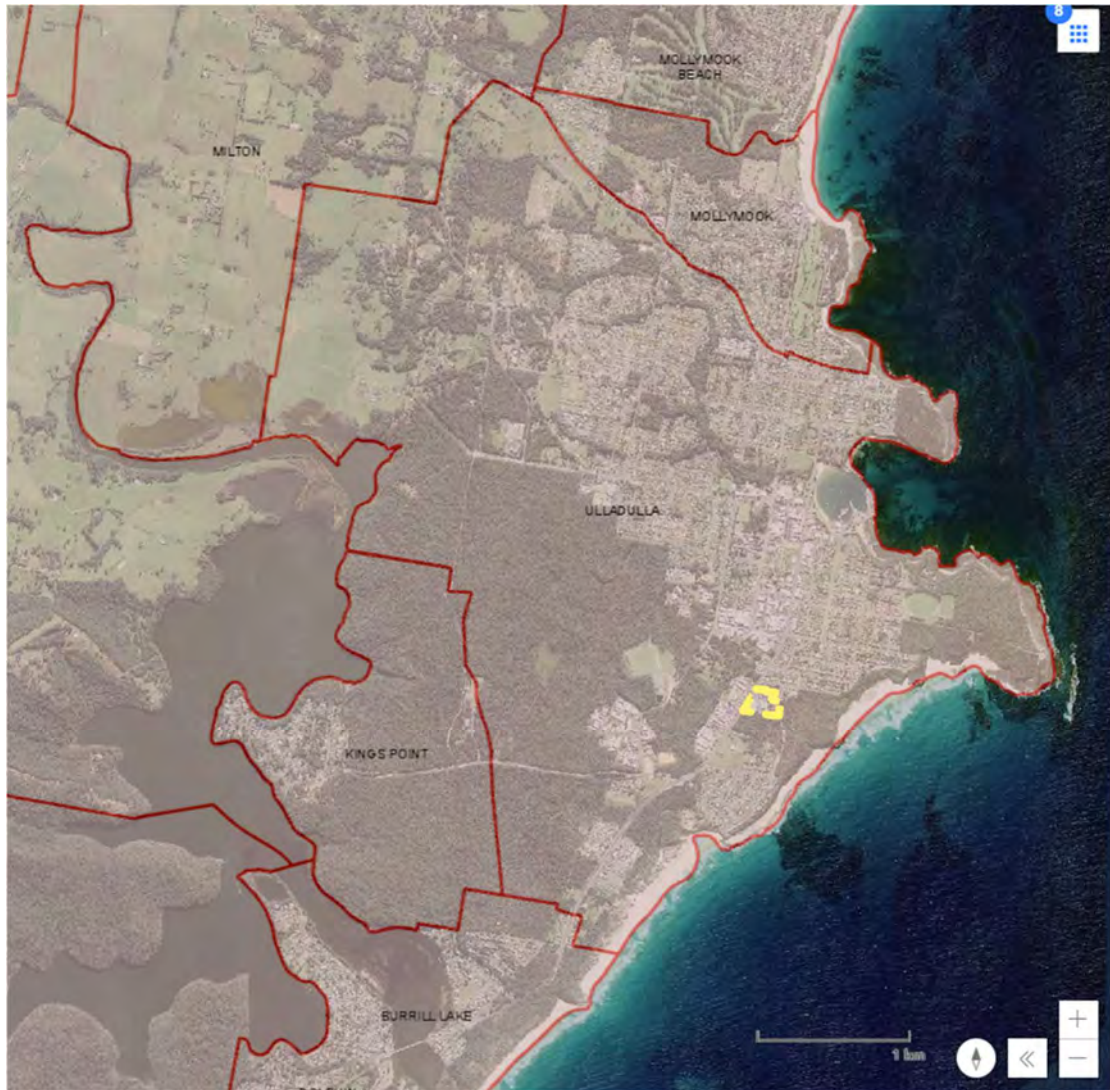
2.1 Local Area Maps

Below is a map depicting surrounding 2021 Level 2 Statistical Areas, with the Club marked in the centre with a blue dot and is situated approximately halfway between Nowra and Batemans Bay.



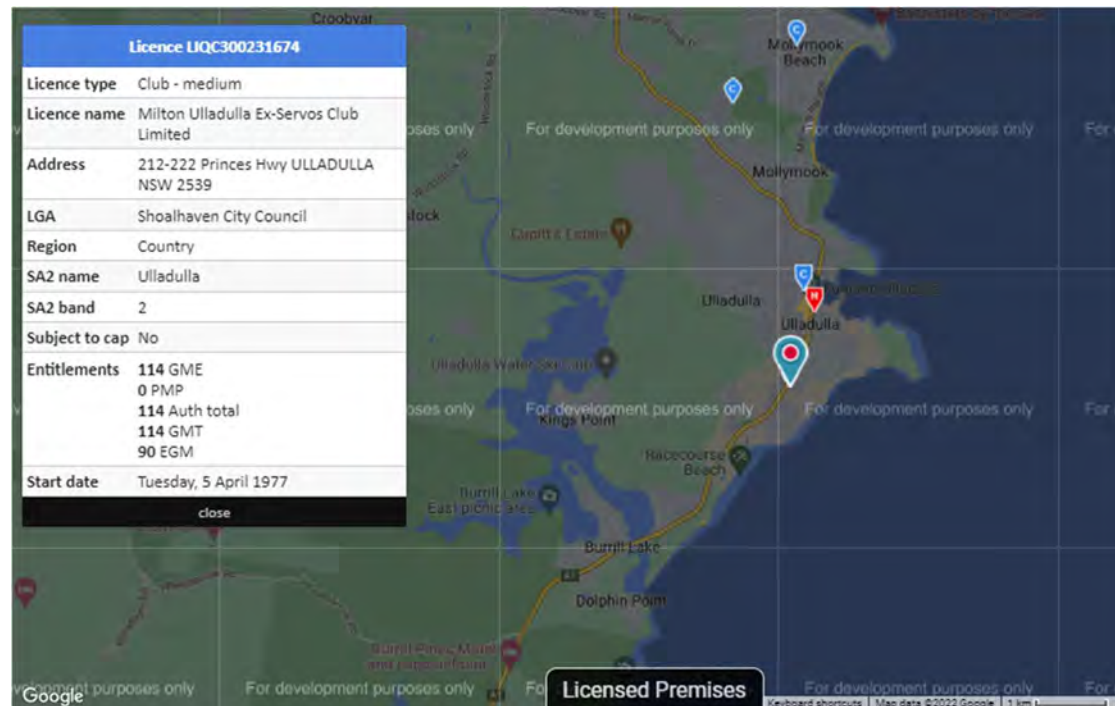
Source: Australian Bureau of Statistics

The below map depicts the suburb of Ulladulla and surrounding suburbs and illustrates the extent of undeveloped bush and farmland in the area. The Club property is marked with a yellow boundary.



Source : NSW Planning Portal

The below map was obtained from the website of Liquor & Gaming NSW (LGNSW) on 11 November 2022 and indicates hotel and registered club gaming venues within a radius of approximately 5km of the Club as at 2 March 2022. The Club is in the centre of the map and indicated by the large blue and red pin drop.



Source Liquor & Gaming NSW

The above map indicates that there are few licensed premises in the area that offer gaming machines.

2.2 Local Demographic

The Club has approximately 16,500 members of which approximately 44% reside within the Ulladulla SA2. We regard the Club's Local Community as being those that reside, work in, or frequent the Ulladulla SA2.

The 2021 census population of Ulladulla SA2 was 17,026. The reported population of the suburb of Ulladulla was 7,262 and for the Shoalhaven LGA was 108,531.

Attached as **Annexure A** is a "QuickStats" summary of the Ulladulla SA2 2021 census data as prepared by the Australian Bureau of Statistics and which includes demographic data as requested in the Class 1 Local Impact Assessment process guidelines issued by LGNSW.

Below is a demographic snapshot of the Ulladulla SA2 comparing key statistical data with the state of New South Wales and Australia.

From the below and attached data we conclude that the population of Ulladulla SA2, with a median age of 52 years and 47.1% aged 55 years and above, is much older when compared to NSW and the Nation.

The rate of unemployment is slightly lower than the State and Nation and, as expected with an older population, the percentage of the population aged 15 years or over not participating in the workforce and the rate of part-time workers are significantly higher than the respective rates for NSW and Australia. These statistics support the above observation that the local area is popular with retirees and semi-retirees.

Demographic Snapshot

2021 census (2016 SEIFA)	Ulladulla (SA2)	NSW	Australia
Median age	52	39	38
Female %	51.7%	50.6%	50.7%
Male %	48.3%	49.4%	49.3%
Indigenous	4.1%	3.4%	3.2%
18+ Population %	81%	78%	78%
55+ Population %	47.1%	29.6%	29.1%
SEIFA (IRSD) Score (Decile)	969 (4)	1001	1001.9
SEIFA (IRSAD) Score (Decile)	941 (3)	1011	1003.1
Unemployed (aged 15+ in labour force)	4.2%	4.9%	5.1%
Not in labour force (aged 15+)	47.1%	35.5%	33.1%
Worked part-time (aged 15+)	42.9%	29.7%	31.2%

Source: Australian Bureau of Statistics / profileid.com.au

Ulladulla SA2 residents predominantly speak the English language at home (90%) and this rate is much higher when compared to NSW (67.6%) and Australia (72%) and reflects the predominant place of birth of Australia (80.9%) for Ulladulla SA2 residents (NSW 65.4%; Australia 66.9%).

The NSW Government has projected that the resident population of the Shoalhaven LGA and Ulladulla SA2 areas are to grow at a much faster pace than for NSW as a whole.

As indicated by the below table recently extracted from the NSW Planning Portal, the population of the Ulladulla SA2 is forecast to grow by 42% over the next two decades (Shoalhaven LGA +34%; NSW +21%).

Region	2021	2041	Change	Annual %
NSW	8,166,757	9,872,934	1,706,176	⬆️ 0.95
✖️  SHOALHAVEN	108,612	145,527	36,914	⬆️ 1.47
✖️  Ulladulla	17,119	24,280	7,161	⬆️ 1.76

Source: NSW Planning Portal

2.3 Local Gaming Data

With reference to the LGNSW Licensed Premises list as at 6 November 2022, the total Gaming Machine Threshold for the Shoalhaven LGA was 1,678 and for Ulladulla SA2 was 383.

The below table indicates that the addition of 20 gaming machines to the Local Community will have a marginal impact and especially so as the population grows:-

Gaming Machines Per Capita

EGM Density (per capita)	Ulladulla (SA2)	Shoalhaven LGA
Population (2021 census)	17,026	108,531
Population (2041 forecast)	24,280	145,527
% Growth (forecast to 2041)	42%	34%
# EGM GMT (current)	383	1,678
GMT increase (as contemplated herein)	20 (+5.2%)	20 (+1.2%)
# EGM GMT (assumed)	403	1,698
EGM per 1,000 pop. (current 2021)	22	15
EGM per 1,000 pop. (assumed 2021)	24	16
EGM per 1,000 pop. (assumed 2041)	17	12

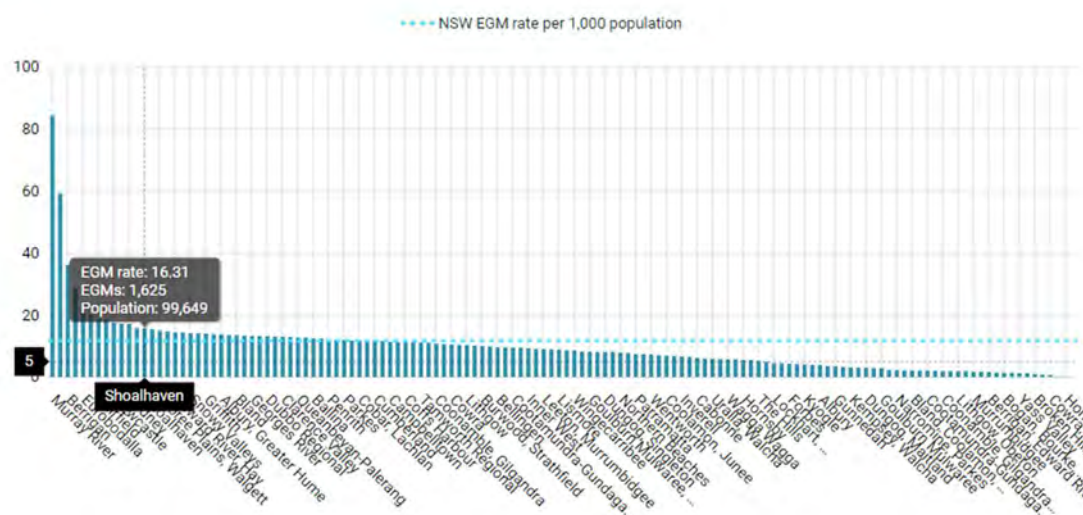
Source: LGNSW, ABS, NSW Planning Portal

For the Ulladulla SA2, LGNSW reported total annual gaming machine net profit in the amount of \$15,442,534 for 2019 (for the year ended 31 May 2019 for clubs and year ended 30 June 2019 for hotels), being the most current SA2 gaming data publicly available. LGNSW also reported therein that the 2019 average annual net profit per gaming machine entitlement or permit in the Ulladulla SA2 was \$42,541.

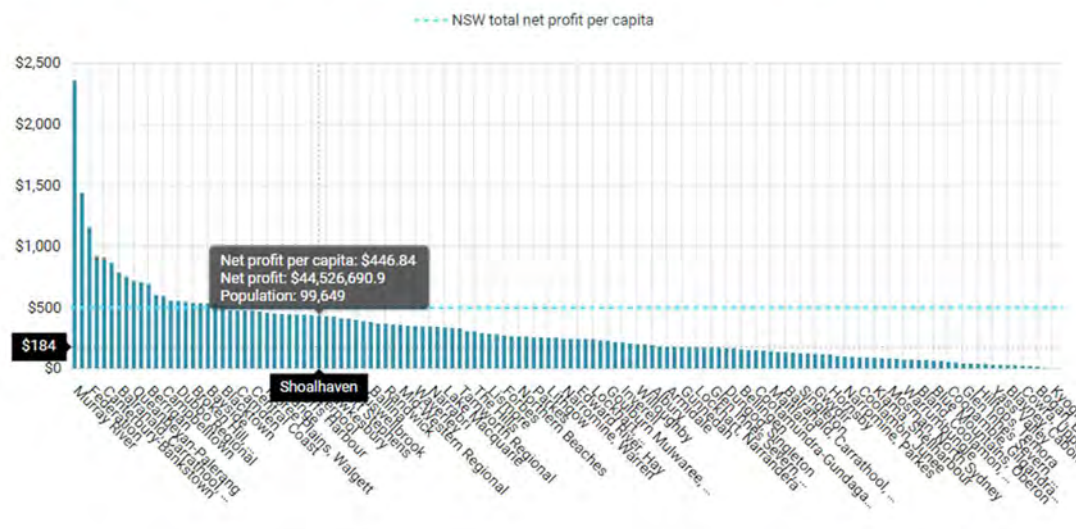
For the Shoalhaven LGA, LGNSW reported total annual gaming machine net profit for clubs in the amount of \$61,522,727 for the year ended 31 May 2022 and from which we calculate the average annual net profit per club gaming machine entitlement in the Shoalhaven LGA was \$42,903, based on total registered club Gaming Machine Entitlements in the LGA as at 1 June 2022 of 1,434.

The below graphs relating to the Shoalhaven LGA gaming density and profitability for the 6-month period ended 31 December 2020 were extracted from LGNSW. These graphs indicate that whilst EGM density may have been higher than many other areas in NSW, EGM profitability per capita was not commensurate with density and was lower and in the mid-range for the state at \$446 per capita.

Local Government Area total EGM rate per 1,000 population from highest to lowest - June 2020 - December 2020 in **New South Wales**:



Local Government Area total net profit per capita from highest to lowest - June 2020 - December 2020 in **New South Wales**:



Source: LGNSW LiveData

For the Shoalhaven LGA, for pubs and clubs in 2022, LGNSW reported total annual gaming machine net profit in the amount of \$75,530,218 (being for the year ended 31 May 2022 for clubs and year ended 30 June 2022 for hotels) and from which we calculate the average annual net profit per gaming machine entitlement or permit in the Shoalhaven LGA was \$45,555 based on total Gaming Machine Entitlements in the LGA as at 1 June 2022 of 1,658.

For the year ended 30 November 2022 the Club reported total gaming machine net profit in the amount of \$8,244,427 and so the Club's average annual net profit per gaming machine entitlement for that period was \$72,320.

The above gaming machine figures include Goods and Services Tax imposed at a rate of 10%.

2.4 Club Venue

The Club is operated by the Applicant, MILTON ULLADULLA EX-SERVOS CLUB LIMITED ABN 90 000 858 364, a company limited by member guarantee and is governed by its Board of Directors, as appointed by members.

In accordance with the Applicant's constitution, profits are not distributed to its members and so are invested in the Club and the Local Community.

The Club's venue and staff of approximately 100 employees are managed by its Secretary Manager and an Operations Manager.

The Club is open 7 days a week and its current trading hours are from 9:30am Monday to Friday and from 10:00am on weekends and advertises as open until 2:00am each day.

The Club's mandatory gaming shutdown hours are from 3:00am to 9:00am on weekdays and from 4:00am until 10:00am on weekends and public holidays.

The Club provides the following facilities and services to members and guests:-

- War Memorial
- Meeting/Function room
- Restaurant
- Two bars (main bar and restaurant)
- Café
- TAB lounge, gaming area and terrace area (restricted area)
- Live entertainment
- Community Raffles for the local Junior Rugby League Club and Soccer club

- Club Keno
- Bottle Shop
- “Earn & Return” recycling
- Car parking (approx. 300 spaces)
- Local Ride Home service

The Club enforces a strict dress code.

The Club provides for sub-clubs or sponsors local interest groups that cater to member interests as follows:

- RSL sub-Branch
- Euchre Club
- Mollymook Outriggers Canoe Club
- Milton Ulladulla Football Club
- Milton Ulladulla Junior Rugby League Club
- Ulladulla Marine Rescue
- Makai Paddlers
- Creative Writing Group
- Social Golf Club

The Club is within the Level 2 Statistical Area of Ulladulla which is a designated Band 2 for the purposes of the *Gaming Machines Act (NSW) 2001* (**Act**).

The Club has a Gaming Machine Threshold (**GMT**) of 114 and the Applicant now seeks to increase its GMT by 20, to 134, being a low range threshold increase for the purposes of section 35 of the *Gaming Machines Act (NSW) 2001* as prescribed by clause 29 of the *Gaming Machines Regulation (NSW) 2019* (**Regulation**).

The Club premises were comprised of two separate structures, one of which is no longer in use and is soon to be demolished. The remaining premises are comprised of approximately 1,770 square metres and includes a separate gaming/TAB lounge area of approximately 750 square metres of which approximately 175 square metres is outdoors.

The gaming area is comprised of seating areas, gaming machines and a TAB lounge area and dedicated toilet amenities that are separate to the non-restricted main Club lounge, function room and dining areas which contain the main Club toilet amenities.

The gaming area is separate to the main Club lounge and dining areas and sits within a restricted lounge area of the Club.

3. GAMBLING HARM MINIMISATION AND RESPONSIBLE GAMBLING MEASURES

The Club has implemented a Gaming Plan of Management (**GPOM**) which outlines the Club's responsible gambling measures and approach to gambling harm minimisation. The GPOM includes such measures as required to comply with the Act and Regulation. The GPOM also incorporates measures that go "above and beyond" and exceed those required by current gaming machine legislation.

In devising its GPOM, the Applicant has had regard to:-

- the Club's desire to promote a safe and responsible gambling environment for all patrons and staff;
- risk profile of the Club;
- relevant legislation and regulation;
- operational best practice;
- social responsibility;
- floor plan and design of the Club and surrounds;
- conditions imposed by Local Council, NSW Independent Liquor & Gaming Authority, Liquor & Gaming NSW or any other authority;
- guidance notes and fact sheets as issued by NSW Independent Liquor & Gaming Authority, Liquor & Gaming NSW, GambleAware and ClubsNSW/ClubSAFE.

3.1 Suitably Qualified Staff

All staff supervising or servicing the gaming area at the Club have current NSW Responsible Conduct of Gambling (**RCG**) qualifications and therefore have completed an approved RCG course.

Gaming staff are required to undertake RCG refresher courses at least every 5 years to maintain RCG competency. The Club maintains a register and monitors impending expiry or refresher training due dates to ensure that only staff with current RCG competency cards are involved in the operation of gaming machines.

The Secretary Manager and Operations Manager undertake an Advanced RCG training course (as approved, if applicable) or otherwise undertake ClubSAFE Staff-Customer Relations Advanced Course or similar at least once every 3 years.

A copy of each relevant staff member's RCG competency card or interim RCG certificate is maintained on the employee register and can be made available for inspection as required in either physical or digital form.

All gaming staff will be directed to comply with the GPOM and will be adequately trained as to its application and encouraged to seek clarification or further direction as required.

3.2 Club Gaming Area

The Club has a separate gaming lounge area wherein all gaming machines are located and minors are not permitted to enter (except in the very limited circumstances as provided for under legislation). The gaming area is located within the designated restricted area.

Patrons are not compelled to pass through the gaming area when entering or exiting the Club or to gain access to the dining area or amenities.

Gaming machines are not visible to the public and are screened from view from the road.

The gaming area is at all times supervised by suitably qualified staff by physical presence or electronic means.

The restricted area of the Club contains toilet amenities, one for each gender, all of which are separate to the toilet amenities for the main lounge and dining areas of the Club and which do *not* require patrons to exit the Club to access.

The gaming area is *not* directly accessible from the street and provides good access within the gaming area to allow ingress from and egress to other areas of the Club.

The gaming area contains only approved electronic gaming machines connected to the Centralised Monitoring System. The Club currently has 96 gaming machines in operation and this amount has fluctuated in recent times to allow for social distancing.

The gaming area contains all mandatory gaming machine signage and does not contain an ATM or an EFTPOS cash withdrawal facility. ATMs are in view of staff and are not visible from the gaming machine area.

The gaming area has adjacent lounge and dining areas to provide respite to gaming patrons. The gaming area benefits from natural light during the day.

3.3 Responsible Gambling Measures

The Club's Gaming Plan of Management (GPOM) includes responsible gambling and harm minimisation measures as detailed below.

3.3.1 Mandatory Responsible Gambling Measures

The GPOM incorporates mandatory RCG measures as required under the Act including, in summary, the following as per specified sections of the Act:-

- s43: The Club does not publish any gaming machine advertising outside of the Club.
- s44: The Club does not display any gambling related signage that could be seen from outside the venue.
- s44A: The Club's gaming machines cannot be seen by the public.
- s45: The Club offers a member rewards scheme and, from time to time, promotional prizes with a value of less than \$1,000, but such rewards or promotional prizes are not redeemable for cash. Members are advised that player activity statements are available and are provided on request. Members can opt out of the Club's reward scheme at any time.
- s45A/B: The Club only provides or discloses player activity statements or member reward card activity to the person to whom the information relates or to anyone lawfully entitled to that information.
- s46: The Club subscribes to ClubsNSW and so has access to the ClubsNSW multi-venue self-exclusion scheme and gambling counselling and treatment services and the availability of same is advertised within the Club and counselling details made available on request and to participants when entering into a self-exclusion agreement at the Club.
- s47: The Club will, at all times, exercise responsible conduct in relation to gaming machines and, in accordance with the Regulation, has incorporated the following mandatory measures in its GPOM:
- a) as noted above, the Club offers a member rewards scheme and, from time to time, promotional prizes with a value of less than \$1,000, but such rewards or promotional prizes are not redeemable for cash.
 - b) the standards to be observed by the Club and staff for responsible conduct in relation to approved gaming machines and staff training, staff meetings, staff communication and processes around same are detailed in the Club's GPOM.
 - c) as noted above, all staff supervising or servicing the gaming area at the Club have current NSW Responsible Conduct of Gambling (**RCG**) qualifications.
 - d) the offer or supply of free or discounted liquor or free gaming machine credits as an inducement to play or to continue playing gaming machines is prohibited.
 - e) comply with all mandatory gaming signage and player information requirements and placement within the gaming area and elsewhere e.g. no minors, self-exclusion, counselling services, dangers of gambling, chances of winning etc. Player information brochures in English language are displayed and

made freely available to players. Information brochures in languages other than English, as issued by LGNSW, are made available on request as soon as possible. Staff are trained and instructed to ensure that mandatory signage and player information requirements are adhered to.

- f) mandatory notices with respect to the availability of problem gambling counselling services will be displayed as prescribed by the Act and elsewhere.
- g) cash dispensing facilities (e.g. automatic teller machine or EFTPOS cash withdrawal) are not available within the gaming area.
- h) details of gaming machine prize winners are not advertised and the Club, if requested, withholds the identity of any major prize-winners.

s47A: The Club does not cash any cheques and so will not accept the transfer of any cheque.

s47B: Any gaming machine prize winnings over \$5,000, or the entire prize if requested by the prize winner, will be paid by:

- a) issuing a cheque which will be crossed and made payable to the prize winner and marked "*Prize winning cheque – cashing rules apply*" or by
- b) electronic funds transfer (EFT) to a nominated account.

s47C: Any cash dispensing facilities (e.g. ATM, EFTPOS) at the Club are not capable of providing cash from a credit card account. Further, no cash or credit will be advanced to any patron.

s48: The Club abides by the ClubsNSW Code of Practice which requires, inter alia, the responsible provision of gambling services. The Club also complies with ClubsNSW's ClubSAFE Responsible Gambling Management Manual as endorsed by the NSW Government;

s49: The Club ensures that patrons have access to the ClubsNSW Multi-Venue Self-Exclusion Scheme at all times the gaming machines are operating and advertises the availability of the scheme and informs patrons as to its operation and:-

- a) does not refuse a patron to participate in a self-exclusion arrangement,
- b) provides a self-excluded patron with a written and signed undertaking that they will not allow them to gamble at the Club for a specified period,

- c) gives a patron the opportunity to obtain independent legal or other professional advice about the intention of the agreement before it commences,
- d) gives a self-excluded patron written details about the gambling-related counselling service available;
- e) ensures that employees at the Club can identify self-excluded patrons by a recent photograph or otherwise,
- f) prevents a patron seeking to withdraw from the self-exclusion scheme within six months of commencement.

s50/52: Minors are prohibited in the restricted area, which includes the gaming area, and all relevant staff and security personnel will be trained to prevent minors from entering the restricted area and to request identification from any patron in the restricted area reasonably suspected of being under the age of 18 years. Any minors found to be improperly in the restricted area will be requested to move to the non-restricted area.

The Applicant undertakes to comply with all legislation that governs the operation of gaming machines and the responsible conduct of gambling.

The Applicant also undertakes to meet its obligations under *The Anti-Money Laundering and Counter-Terrorism Financing Act 2006*.

3.3.2 Responsible Gambling Measures Above and Beyond

In addition to the mandatory measures noted above, the Applicant, after assessing the risk profile of the venue, has implemented further operational measures to reduce the risk of gambling harm and to deter problem gamblers from the gaming area of the Club.

The Club has implemented a Gaming Plan of Management (GPOM) which incorporates ClubsNSW's ClubSAFE Responsible Gambling Management Manual.

The Club's strong presence of staff in its gaming area enables the prompt detection of problem gambling or potential gambling harm and, to address any such incidents, the Club's GPOM provides clear guidance to staff and is the foundation of the Club's culture of responsible gambling.

The Club is a member of ClubsNSW, the peak representational body for the NSW registered club industry. ClubsNSW offers members access to ClubSAFE, a leading responsible gambling and compliance program.

The Club's Gaming Plan of Management also provides as follows:-

1. At least once every three years, the Secretary Manager and Operations Manager are required to undertake training in Advanced Responsible Conduct of Gambling or ClubSAFE Staff-Customer Relations Advanced Course or similar and so are well trained to recognise and address signs of gambling harm or potential gambling harm;

2. Duty Supervisors are provided with annual refresher training on the ClubSAFE MVSE process.
3. There is always at least one adequately trained person on the premises when the Club is open for trade and gaming machines are operating that has been directed to specifically monitor or address signs of problem gambling or potential gambling harm or to implement an MVSE or to direct patrons, when required, to suitable problem gambling counselling services.
4. At all times that gaming machines are in operation a designated Responsible Gambling Officer, being a dedicated staff member who holds a current RCG certificate, assumes the following duties:-
 - a) maintain the gambling incident register;
 - b) make reasonable efforts to identify gaming machine players who display or engage in problematic gambling behaviour;
 - c) if any gaming machine player displays or engages in multiple problematic gambling behaviour as outlined in the Authority's Guideline, during a single trading day, then the Officer must (at least once during that trading day):
 - i. request that the player take a break from gaming machine play until the close of trade on that day or night (noting that a player who complies with a request to take a break may remain on the premises and consume other goods and services);
 - ii. provide information about the self-exclusion scheme offered at the premises (being the scheme available pursuant to s. 49 of the Gaming Machines Act 2001) and ask whether the player wishes to participate in that scheme;
 - iii. provide information about and access to problem gambling counselling.

Any notable observations, issues or concerns are identified and recorded in the Incident Register and conveyed to the Duty Supervisor on any subsequent shift on handover.

Any urgent or serious gambling harm incident is immediately escalated to the Operations Manager or Duty Supervisor. Such incidents are also recorded in an internal Communications Log which senior staff are required to review each shift.

5. The Club maintains a gambling incident register (**Incident Register**) which is to record the following:-
 - a. any incident in which a patron of the venue displays or engages in problematic gambling behaviour of the kind specified in the "Signs of risky and problem gambling behaviour: Know your signs and how to act" factsheet published on the LGNSW website as amended from time to time.

- b. the time, location and machine number(s) and brief description (or identity, if known) of any gaming machine player identified displaying or engaging in that behaviour.
 - c. any proposed or implemented self or third-party exclusions of gaming machine players (specifying the players name (where provided or known), membership number (if applicable) and duration of any exclusion) and the patron's response to the same.
 - d. any breach or attempted breach of a self or third-party exclusion.
 - e. details of the action taken in response to incidents, applications and other matters recorded in the register.
6. The Secretary Manager reviews the gambling Incident Register at least once a month to consider whether an exclusion order is appropriate for any person who has been asked to self-exclude but has declined to do so.
 7. The Gambling Incident Register will be retained for at least 3 years and made available for inspection by NSW Police or Liquor & Gaming NSW officers.
 8. The Operations Manager is notified of any serious incidents on the day of the incident and all incidents are flagged in an internal Communications Log that is accessed by senior staff.
 9. Closed Circuit Television (CCTV) will be in operation throughout the Club and surrounds, including the Gaming Area. CCTV is monitored by Reception, Duty Supervisors and Managers back of house;
 10. Facilitate Multi-Venue Self-Exclusion (i.e. as opposed to single venue exclusion as required under section 49 of the Act) for patrons as required and also participate in the state-wide Multi-Venue Self-Exclusion scheme;
 11. A self-exclusion register is maintained and displayed in a staff only area within the Club and staff are reminded of the confidential nature of this register. Reception, Bar and Gaming floor staff are directed to review persons on the self-exclusion register daily.
 12. Gaming staff undertake on at least a weekly basis, a gaming signage audit, a record of which is held for at least 12 months and any exceptions are logged and immediately reported to the Duty Supervisor to rectify.
 13. Bi-annual gaming staff meetings (or more frequently if required) to refresh responsible gambling measures and address gambling incidents and to discuss matters such as the implementation of this GPOM, self-exclusion register updates, identified problem gamblers, feedback on managing incidents, supporting staff to approach patrons identified as at-risk, legislation amendments, signage and complaint procedures etc.
 14. The Club obtains EFT details in writing, with details of the amount and the destination account and a declaration signed by the patron stating that the patron is the beneficiary of the destination bank account;

15. The Club does not cash any cheques whatsoever;
16. Strategic placement (e.g in bathrooms) of signage regarding gambling awareness or counselling services.
17. The Club promotes responsible gambling behaviours among patrons via messages on the Club's website, newsletters and other marketing materials and incorporates promotional material from the ClubSAFE Ambassador designed to reduce stigma and encourage early help seeking behaviour.
18. Digital sign-in technology actively identifies self-excluded patrons on entry.
19. The Club has a customer complaints resolution policy which incorporates complaints related to the responsible conduct of gambling.
20. Any minors identified in the restricted areas are removed immediately from the restricted area and their parent/guardian are reminded that minors are to remain in their immediate company at all times. If the parent/guardian leaves a minor unattended again, they will be asked to leave the venue. Staff are directed to ensure that minors remain in non-restricted areas only.

We submit that the above measures exceed and go "Above & Beyond" that required by legislation and, most importantly, will reduce the risk of gambling harm at the Club and instil responsible gambling practices in staff and patrons.

4. POSITIVE CONTRIBUTION

In the event that the GMT increase proposed herein is approved, the Applicant undertakes to provide a positive contribution in the form of a cash contribution to the Responsible Gambling Fund (**Community Benefit**) in accordance with section 36A of the Act.

If the Community Benefit were to be calculated as prescribed by ILGA's GL4014 Class 1 Local Impact Assessment process guideline, based on the Club's average gaming machine net profit per gaming machine *entitlement* for the year ended 30 November 2022, we estimate a total contribution sum in the amount of \$1,084,793.

Based on the Club's average gaming machine net profit per gaming machine for the year ended 30 November 2022 and, based on gaming machines in play as at that date, we estimate a total contribution sum in the amount of \$1,288,192.

We note that the quantum of the Club's gaming machines in use currently has been reduced to allow for COVID social distancing. Accordingly, we submit it would be unjust to calculate the Club's Community Benefit on the basis of gaming machines in use currently.

We also note that another registered club also in the Ulladulla SA2, some 3kms from the subject Club, had a GMT increase of 20, to 149, approved as recently as September 2022. In that instance a Community Benefit in the amount of \$578,160.13 was imposed.

Given the close proximity of this other registered club, a direct competitor of the Applicant Club, the only equitable outcome in this instance is that a similar Community Benefit sum be imposed on the Applicant.

Accordingly, should this GMT application be approved, the Applicant Club proposes to remit a Community Benefit sum in the total amount of \$600,000, payable in 5 equal instalments over 5 years.

The Club provides a safe and welcoming venue and has a suite of governance policies, including a Gaming Plan of Management, and provides a high level of customer service and actively supports its community.

The Applicant also remits taxes in accordance with the *Gaming Machines Tax Act* and will continue to do so.

As noted above, the Applicant has implemented a number of responsible gambling measures that go "above and beyond" those required by law.

The Applicant participates in the ClubGrants scheme and for the most recent year ended 31 August 2022 the Club supported the following organisations:-

CLUBGRANTS 2021/22	Project Name
Milton Ulladulla Junior Bulldogs	Sponsorship
Milton Ulladulla Football Club	Sponsorship
Ulladulla High - Presentation night	Presentation night
Milton Ulladulla Business Chamber	Christmas carols
Milton Hospital	Mental Health course
Christmas Hampers for the needy	Christmas Hampers for the needy
Koori Kids (Anzac Schools initiative)	Koori Kids (Anzac Schools initiative)
Ulladulla Police 000 fundraiser	Triple 0 Hootenanny
Ulladulla & Districts Netball Association	Ulladulla & Districts Netball Association
Milton Follies	Sponsorship
Conjola Rural Fire Brigade	Fundraising Raffle
Thirst Box Rally - Cancer Council	Sponsorship
RISE event (Kokoda Trek)	Rise Event
Surf Club - Easter Life saving	Easter life guards
The Cancer Support Foundation	Sponsorship
Entertainers community fundraiser	Sponsorship
The Distinguished Gentleman's Ride - Men's Mental Health	Donation
1st Burrill Ulladulla Sea Scouts	Purchase of life jackets & Volunteer Leader Training
Master Builders Association	Sponsorship
Mollymook Surf Club	Hi-Vis Vests & Youth Education and Training
Milton Ulladulla ExServos Golf Team	Sponsorship
Mollymook Bridge Club	Fundraising Raffle
Marine Rescue Ulladulla	Sponsorship & Automated External Defibrillators (AEDs)
Mollymook Surf Club Juniors - 2021/22 Season	Sponsorship
Ulladulla Children's Centre	New Junior Toilet suites
Ulladulla & districts Community Resources Centre	The Parenting Collective

CLUBGRANTS 2021/22	Project Name
Ulladulla Emotional Disturbance Unit	Ulladulla Emotional Disturbance Unit
Ulladulla Public School P&C	Indoor / Outdoor Sensory Space
Marine Rescue Kioloa	Portable VHF/DCN Radio
Mollymook Surf Lifesaving Club	Youth Education and Training
RSL & Service Clubs Association	Veterans Benevolent Fund
Safe Waters Community Care (homeless shelter)	Weekend Wage Support
Mollymook Outriggers	Sponsorship
Ulladulla Swim Club	New uniforms
Men of League	Sponsorship
Fiona Iver's fundraiser	Donation

Most importantly, the Club actively supports its community, especially in times of need. During the recent bushfires of the summer of 2019/2020, the Club became an emergency services hub and provided breakfast, lunch and dinner for all emergency service workers from State Emergency Services, Rural Fire Service, Ambulance, Police, etc.

The Club was the only local venue with a power generator during this period which enabled the provision of shelter, power, food and drinks, particularly on New Year's Eve where the Club served over 1,000 meals. Further the Club managed the local bushfire evacuation centre at Ulladulla Civic Centre and coordinated hospitality and accommodation services by also providing, food, drinks and shelter at that venue.

5. NOTIFY COMMUNITY

In accordance with section 37 of the Regulation, within two business days of the making of the threshold increase application as contemplated herein, the Club will notify the local council, police, health district and community services providers, as prescribed by the Regulation, of the making of this application.

The Club will also, within two business days, advertise the making of this application by affixing the prescribed notice to the front of its premises and by placing an advertisement in a local newspaper, being the Milton Ulladulla Times in this instance.

The above notices and advertisements will invite the community to inspect this LIA and make submissions to the Authority within 60 days and direct the community to the LGNSW website for this purpose.

6. CONCLUSION

Based on the above findings and the Club's venue design, practices and Gaming Plan of Management as implemented by qualified staff, the Authority can be satisfied that:

- this Class 1 Local Impact Assessment complies with the Act;
- any gambling activities at the Club are conducted in a responsible manner and comply with and, in many instances exceed, mandatory responsible conduct of gambling obligations;

- the application, if granted, will result in a positive contribution to the local community as outlined above.

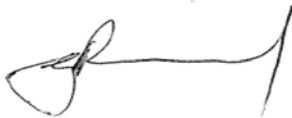
Accordingly, we respectfully submit that the Authority consider approval of the Gaming Machine Threshold increase as contemplated herein.

7. ANNEXURE A – DEMOGRAPHY

Attached as **Annexure A** is a “QuickStats” statistical summary of Ulladulla SA2 as obtained from the Australian Bureau of Statistics.

Should you have any queries regarding the above, please do not hesitate to contact me on telephone 02 9957 6700.

Yours faithfully,

A handwritten signature in black ink, appearing to read 'G A Russell', with a stylized flourish at the end.

G A Russell
Director
Chartered Accountant



✓ Latest release

Ulladulla

2021 Census All persons QuickStats

Geography type [Statistical Areas Level 2](#)

Area code 114011282



Map data © OpenStreetMap contributors, CC-BY-SA

Powered by Esri



People

17,026

Male

48.3%

Female

51.7%

Median age

52



Families

4,881

Average number of children per family

for families with children

1.8

for all households (a)

0.5



All private dwellings

9,572

Average number of people per household

2.3

Median weekly household income

\$1,167

Median monthly mortgage repayments

\$1,647

Median weekly rent (b)

\$351

Average number of motor vehicles per dwelling

1.8

(a) This label has been updated to more accurately reflect the Census concept shown in this data item. The data has not changed.

(b) For 2021, median weekly rent calculations exclude dwellings being occupied rent-free.

Small random changes have been made to all cell values for privacy reasons. These changes may cause the sum of rows or columns to differ by small amounts from the table totals.

People and population

People <i>All people</i>	Ulladulla	%	New South Wales	%	Australia	%
Male	8,222	48.3	3,984,166	49.4	12,545,154	49.3
Female	8,802	51.7	4,087,995	50.6	12,877,635	50.7

More information on [Sex \(SEXP\)](#), [Place of usual residence \(PURP\)](#)

Table based on place of usual residence

Indigenous status <i>All people</i>	Ulladulla	%	New South Wales	%	Australia	%
Aboriginal and/or Torres Strait Islander	696	4.1	278,043	3.4	812,728	3.2
Non-Indigenous	15,480	90.9	7,404,499	91.7	23,375,949	91.9
Indigenous status not stated	843	5.0	389,616	4.8	1,234,112	4.9

More information on [Indigenous status \(INGP\)](#)

Table based on place of usual residence

Age All people	Ulladulla		New South Wales		Australia	
		%		%		%
Median age	52	N/A	39	N/A	38	N/A
0-4 years	810	4.8	468,056	5.8	1,463,817	5.8
5-9 years	866	5.1	500,810	6.2	1,586,138	6.2
10-14 years	932	5.5	501,135	6.2	1,588,051	6.2
15-19 years	819	4.8	457,896	5.7	1,457,812	5.7
20-24 years	558	3.3	496,185	6.1	1,579,539	6.2
25-29 years	653	3.8	555,967	6.9	1,771,676	7.0
30-34 years	772	4.5	586,057	7.3	1,853,085	7.3
35-39 years	892	5.2	580,185	7.2	1,838,822	7.2
40-44 years	827	4.9	522,984	6.5	1,648,843	6.5
45-49 years	908	5.3	516,915	6.4	1,635,963	6.4
50-54 years	965	5.7	500,027	6.2	1,610,944	6.3
55-59 years	1,128	6.6	490,155	6.1	1,541,911	6.1
60-64 years	1,469	8.6	471,628	5.8	1,468,097	5.8
65-69 years	1,556	9.1	416,493	5.2	1,298,460	5.1
70-74 years	1,490	8.7	372,234	4.6	1,160,768	4.6
75-79 years	1,035	6.1	268,110	3.3	821,920	3.2
80-84 years	711	4.2	183,409	2.3	554,598	2.2
85 years and over	644	3.8	183,895	2.3	542,342	2.1

More information on [Age \(AGEP\)](#).

Table based on place of usual residence

Registered marital status People aged 15 years and over	Ulladulla		New South Wales		Australia	
		%		%		%
Married	7,173	49.7	3,124,151	47.3	9,665,708	46.5
Separated	495	3.4	209,657	3.2	674,590	3.2
Divorced	1,603	11.1	569,516	8.6	1,831,952	8.8
Widowed	1,161	8.1	339,990	5.1	1,029,142	5.0
Never married	3,991	27.7	2,358,844	35.7	7,583,393	36.5

Note: In December 2017, amendments to the Marriage Act 1961 came into effect enabling marriage equality for all couples. For 2021, registered marriages include all couples.

More information on [Registered marital status \(MSTP\)](#).

Table based on place of usual residence

Social marital status**People aged 15 years and over, usually resident
and present in the household on Census night**

	Ulladulla	%	New South Wales	%	Australia	%
Registered marriage (a)	6,512	50.1	2,847,938	47.3	8,747,135	46.6
De facto marriage (b)	1,452	11.2	637,050	10.6	2,168,351	11.5
Not married	5,024	38.7	2,532,544	42.1	7,863,327	41.9

(a) In December 2017, amendments to the Marriage Act 1961 came into effect enabling marriage equality for all couples. For 2021, registered marriages include all couples.

(b) De facto marriage is when two people live together as partners who are not in a registered marriage. It includes people who report de facto, partner, common law husband/wife/spouse, lover, girlfriend or boyfriend.

More information on [Social marital status \(MDCP\)](#).

Table based on place of usual residence

Education

Type of educational institution attending	Ulladulla	%	New South Wales	%	Australia	%
<i>People attending an educational institution</i>						
Preschool	347	8.6	167,196	6.8	484,185	6.3
<i>Primary</i>						
Primary - Government	1,026	25.4	444,985	18.1	1,421,300	18.5
Primary - Catholic	94	2.3	127,487	5.2	396,758	5.2
Primary - other non-Government	8	0.2	77,876	3.2	254,043	3.3
<i>Primary total (a)</i>	<i>1,131</i>	<i>28.0</i>	<i>651,375</i>	<i>26.5</i>	<i>2,075,224</i>	<i>27.0</i>
<i>Secondary</i>						
Secondary - Government	874	21.6	290,414	11.8	934,138	12.2
Secondary - Catholic	42	1.0	126,180	5.1	371,022	4.8
Secondary - other non-Government	31	0.8	94,885	3.9	322,314	4.2
<i>Secondary total (b)</i>	<i>947</i>	<i>23.4</i>	<i>512,195</i>	<i>20.9</i>	<i>1,629,624</i>	<i>21.2</i>
<i>Tertiary</i>						
Tertiary - Vocational education (including TAFE and private training providers)	307	7.6	207,586	8.5	601,901	7.8
Tertiary - University or other higher education	262	6.5	375,032	15.3	1,185,450	15.4
<i>Tertiary total (c)</i>	<i>564</i>	<i>13.9</i>	<i>583,617</i>	<i>23.8</i>	<i>1,789,994</i>	<i>23.3</i>
Other	67	1.7	74,331	3.0	242,821	3.2
Not stated	995	24.6	465,268	19.0	1,456,618	19.0

(a) Includes Primary - not further defined.

(b) Includes Secondary - not further defined.

(c) Includes Tertiary - not further defined.

More information on [Type of educational institution attending \(TYPP\)](#)

Table based on place of usual residence

Level of highest educational attainment	Ulladulla	%	New South Wales	%	Australia	%
<i>People aged 15 years and over</i>						
Bachelor Degree level and above	2,386	16.5	1,838,502	27.8	5,464,631	26.3
Advanced Diploma and Diploma level	1,290	8.9	616,322	9.3	1,946,738	9.4
Certificate level IV	570	4.0	216,768	3.3	719,425	3.5
Certificate level III	2,626	18.2	771,009	11.7	2,617,766	12.6
Year 12	1,536	10.7	954,987	14.5	3,104,116	14.9
Year 11	524	3.6	212,538	3.2	958,803	4.6
Year 10	2,277	15.8	698,390	10.6	2,086,306	10.0
Certificate level II	11	0.1	4,703	0.1	13,687	0.1
Certificate level I	0	0.0	764	0.0	2,614	0.0
Year 9 or below	1,380	9.6	487,855	7.4	1,490,444	7.2
Inadequately described	498	3.5	184,252	2.8	506,259	2.4
No educational attainment	35	0.2	64,827	1.0	175,844	0.8
Not stated	1,276	8.8	549,965	8.3	1,694,773	8.2

More information on [Level of highest educational attainment \(HEAP\)](#)

Table based on place of usual residence

Cultural diversity

Ancestry, top responses <i>All people</i>	Ulladulla	%	New South Wales	%	Australia	%
English	7,632	44.8	2,404,990	29.8	8,385,928	33.0
Australian	6,752	39.7	2,307,549	28.6	7,596,753	29.9
Irish	2,161	12.7	735,340	9.1	2,410,833	9.5
Scottish	2,050	12.0	620,363	7.7	2,176,777	8.6
Italian	659	3.9	301,829	3.7	1,108,364	4.4

Note 1: Respondents had the option of reporting up to two ancestries on their Census form, and this is captured by the Ancestry multi response (ANCP) variable used in this table. Therefore, the sum of all ancestry responses for an area will not equal the total number of people in the area.

Note 2: Calculated percentages represent a proportion of the number of people in the area (including those who did not state an ancestry). In 2016 QuickStats percentages were based on total number of responses and will not be comparable to this table.

More information on [Ancestry multi response \(ANCP\)](#).

Table based on place of usual residence

Country of birth, top responses <i>All people</i>	Ulladulla	%	New South Wales	%	Australia	%
Australia	13,774	80.9	5,277,497	65.4	17,019,815	66.9
<i>Other top responses:</i>						
England	737	4.3	231,385	2.9	927,490	3.6
New Zealand	234	1.4	118,527	1.5	530,492	2.1
Scotland	96	0.6	27,659	0.3	118,496	0.5
Italy	80	0.5	47,197	0.6	163,326	0.6
Germany	78	0.5	28,921	0.4	101,255	0.4

More information on [Country of birth of person \(BPLP\)](#).

Table based on place of usual residence

Country of birth of parents <i>All people</i>	Ulladulla	%	New South Wales	%	Australia	%
Both parents born overseas	2,702	15.9	3,181,894	39.4	9,321,603	36.7
Father only born overseas	1,164	6.8	509,789	6.3	1,670,476	6.6
Mother only born overseas	877	5.2	369,492	4.6	1,257,942	4.9
Both parents born in Australia	11,230	66.0	3,529,168	43.7	11,663,577	45.9
Not stated	1,043	6.1	481,824	6.0	1,509,188	5.9

Note: For the 2021 Census, guidance was provided to respondents on how to answer for mother/father if their birth parent is unknown or they have same-sex parents.

More information on [Country of birth of parents \(BPPP\)](#)

Table based on place of usual residence

Country of birth of father, top stated responses <i>All people</i>	Ulladulla	%	New South Wales	%	Australia	%
Australia	12,157	71.4	3,909,559	48.4	12,959,282	51.0
England	1,212	7.1	412,867	5.1	1,626,778	6.4
New Zealand	329	1.9	155,208	1.9	673,661	2.6
Scotland	270	1.6	69,657	0.9	272,233	1.1
Italy	231	1.4	130,127	1.6	477,065	1.9

Note: For the 2021 Census, guidance was provided to respondents on how to answer for father if their birth parent is unknown or they have same-sex parents.

More information on [Country of birth of father \(BPMP\)](#)

Table based on place of usual residence

Country of birth of mother, top stated responses <i>All people</i>	Ulladulla	%	New South Wales	%	Australia	%
Australia	12,434	73.0	4,053,583	50.2	13,383,605	52.6
England	1,128	6.6	365,398	4.5	1,488,479	5.9
New Zealand	324	1.9	148,110	1.8	650,743	2.6
Scotland	226	1.3	60,233	0.7	241,428	0.9
Italy	187	1.1	106,001	1.3	391,399	1.5

Note: For the 2021 Census, guidance was provided to respondents on how to answer for mother if their birth parent is unknown or they have same-sex parents.

More information on [Country of birth of mother \(BPFP\)](#)

Table based on place of usual residence

Religious affiliation, top responses <i>All people</i>	Ulladulla	%	New South Wales	%	Australia	%
No Religion, so described	7,070	41.5	2,644,165	32.8	9,767,448	38.4
Catholic	3,352	19.7	1,807,730	22.4	5,075,907	20.0
Anglican	2,997	17.6	960,305	11.9	2,496,273	9.8
Not stated	1,119	6.6	548,340	6.8	1,751,052	6.9
Uniting Church	561	3.3	172,132	2.1	673,260	2.6

Note: 'No Religion, so described' does not include those who reported Secular and Other Spiritual Beliefs such as Atheism, Agnosticism and Own Spiritual Beliefs.

In Ulladulla, Christianity was the largest broad group religious group reported overall (52.5%) (excludes Not stated). The broad group level is the highest and most general level of the [Australian Standard Classification of Religious Groups, 2016](#).

More information on [Religious affiliation \(RELPA\)](#)

Table based on place of usual residence

Language used at home, top responses (other than English) All people	Ulladulla	%	New South Wales	%	Australia	%
Italian	92	0.5	64,039	0.8	228,042	0.9
Spanish	48	0.3	71,868	0.9	171,370	0.7
German	47	0.3	20,161	0.2	70,247	0.3
Thai	32	0.2	28,034	0.3	66,576	0.3
Greek	30	0.2	78,691	1.0	229,643	0.9
English only used at home	15,382	90.3	5,457,982	67.6	18,303,662	72.0
Households where a non-English language is used	383	5.5	856,911	29.5	2,295,688	24.8

More information on [Language used at home \(LANP\)](#)

Languages used at home data is based on place of usual residence

Households where a non-English language is used is based on place of enumeration

Income and work

Participation in the labour force <i>People aged 15 years and over</i>	Ulladulla	%	New South Wales	%	Australia	%
In the labour force	6,801	47.2	3,874,012	58.7	12,695,853	61.1
Not in the labour force	6,789	47.1	2,341,417	35.5	6,888,081	33.1
Not stated	830	5.8	386,728	5.9	1,200,851	5.8

Note 1: Calculated percentages represent a proportion of people aged 15 and over in the area.

Note 2: The ABS Labour Force Survey provides the official estimates of Australia's labour force. More information is provided in [Comparing 2021 Census and Labour Force Survey](#).

More information on [Labour force status \(LFSP\)](#).

Table based on place of usual residence

Employment status <i>People who reported being in the labour force, aged 15 years and over</i>	Ulladulla	%	New South Wales	%	Australia	%
Worked full-time	3,057	44.9	2,136,610	55.2	7,095,103	55.9
Worked part-time	2,917	42.9	1,151,660	29.7	3,962,550	31.2
Away from work (a)	527	7.7	395,888	10.2	991,758	7.8
Unemployed	289	4.2	189,852	4.9	646,442	5.1

Note 1: Calculated percentages represent a proportion of people aged 15 and over who reported being in the labour force in the area.

Note 2: The ABS Labour Force Survey provides the official estimates of Australia's labour force. More information is provided in [Comparing 2021 Census and Labour Force Survey](#).

(a) Counts employed people who reported 0 hours of work the week before the Census or did not state their hours of work.

More information on [Labour force status \(LFSP\)](#).

Table based on place of usual residence

Employment, hours worked <i>Employed people aged 15 years and over</i>	Ulladulla	%	New South Wales	%	Australia	%
0 hours (away from work)	388	6.0	331,611	9.0	787,382	6.5
1-19 hours	1,382	21.2	504,158	13.7	1,681,120	14.0
20-29 hours	957	14.7	400,415	10.9	1,373,403	11.4
30-34 hours	583	9.0	247,088	6.7	908,031	7.5
35-39 hours	1,102	16.9	751,277	20.4	2,487,056	20.6
40-44 hours	1,069	16.4	768,161	20.9	2,448,402	20.3
45 hours or more	885	13.6	617,176	16.8	2,159,645	17.9

Note: Records the number of hours worked in all jobs held during the week before Census Night for employed people aged 15 years and over. This excludes any time off but includes any overtime or extra time worked.

More information on [Hours worked \(HRSP\)](#).

Table based on place of usual residence

Occupation, top responses <i>Employed people aged 15 years and over</i>	Ulladulla	%	New South Wales	%	Australia	%
Professionals	1,151	17.7	952,131	25.8	2,886,921	24.0
Technicians and Trades Workers	1,127	17.3	436,589	11.9	1,554,313	12.9
Community and Personal Service Workers	906	13.9	390,779	10.6	1,382,205	11.5
Managers	828	12.7	536,820	14.6	1,645,769	13.7
Sales Workers	739	11.4	294,889	8.0	986,433	8.2
Labourers	735	11.3	300,966	8.2	1,086,120	9.0
Clerical and Administrative Workers	679	10.4	480,612	13.0	1,525,311	12.7
Machinery Operators and Drivers	246	3.8	222,186	6.0	755,863	6.3

More information on [Occupation \(OCCP\)](#).

Table based on place of usual residence

Industry of employment, top responses <i>Employed people aged 15 years and over</i>	Ulladulla	%	New South Wales	%	Australia	%
Supermarket and Grocery Stores	272	4.2	92,329	2.5	299,810	2.5
Cafes and Restaurants	258	4.0	72,942	2.0	268,005	2.2
Accommodation	227	3.5	30,040	0.8	107,476	0.9
Secondary Education	178	2.7	64,612	1.8	205,360	1.7
Primary Education	173	2.7	76,275	2.1	265,249	2.2

More information on [Industry of employment \(INDP\)](#).

Table based on place of usual residence

Median weekly incomes (a) <i>People aged 15 years and over</i>	Ulladulla	%	New South Wales	%	Australia	%
Personal (b)	\$612	N/A	\$813	N/A	\$805	N/A
Family (c)	\$1,448	N/A	\$2,185	N/A	\$2,120	N/A
Household (d)	\$1,167	N/A	\$1,829	N/A	\$1,746	N/A

(a) Incomes are collected in ranges. The medians are then calculated using information from the Survey of Income and Housing.

(b) Excludes people aged 15 years and over who did not state their income.

(c) Excludes families where at least one family member aged 15 years and over did not state their income.

(d) Excludes households where at least one household member aged 15 years and over did not state their income.

More information on [Total personal income \(INCP\)](#), [Total family income \(FINF\)](#), [Total household income \(HIND\)](#).

Personal income data is based on place of usual residence

Family and household income data is based on place of enumeration

Method of travel to work on the day of the Census, top responses <i>Employed people aged 15 years and over</i>	Ulladulla	%	New South Wales	%	Australia	%
Car, as driver	4,092	62.9	1,587,613	43.1	6,347,498	52.7
Car, as passenger	310	4.8	117,143	3.2	466,904	3.9
Walked only	209	3.2	92,368	2.5	306,045	2.5
Truck	80	1.2	26,390	0.7	76,657	0.6
Bicycle	35	0.5	14,466	0.4	79,089	0.7
Did not go to work	772	11.9	487,646	13.2	1,417,449	11.8
Worked at home	822	12.6	1,141,467	31.0	2,531,262	21.0
People who travelled to work by public transport (a)	18	0.3	147,492	4.0	554,711	4.6
People who travelled to work by car as driver or passenger (b)	4,446	68.3	1,737,359	47.2	6,961,762	57.8

Note: Respondents had the option to report up to three methods of travel to work on the day of the Census.

(a) Includes people who used public transport (train, bus, ferry, tram/light rail), as at least one of their methods of travel to work on Census day.

(b) Includes people who travelled by car (as a driver, or as a passenger), as at least one of their methods of travel to work on Census day.

More information on [Method of travel to work \(MTWP\)](#).

Table based on place of usual residence

Unpaid work and care

Unpaid work and care <i>People aged 15 years and over</i>	Ulladulla	%	New South Wales	%	Australia	%
Did unpaid domestic work (week before Census Night)	10,238	71.0	4,392,869	66.5	14,077,657	67.7
Provided unpaid care for child/children (during two weeks before Census Night)	3,293	22.8	1,669,763	25.3	5,471,756	26.3
Provided unpaid assistance to a person with a disability, health condition or due to old age (during two weeks before Census Night)	1,968	13.6	759,383	11.5	2,476,681	11.9
Did voluntary work through an organisation or group (last 12 months)	2,384	16.5	857,891	13.0	2,933,646	14.1

More information on [Unpaid domestic work \(DOMP\)](#), [Unpaid child care \(CHCAREP\)](#), [Unpaid assistance to a person with a disability, health condition, or due to old age \(UNCAREP\)](#), [Voluntary work for an organisation or group \(VOLWP\)](#).

Table based on place of usual residence

Unpaid domestic work, number of hours <i>People aged 15 years and over</i>	Ulladulla	%	New South Wales	%	Australia	%
Less than 5 hours	2,534	17.6	1,244,306	18.8	4,117,135	19.8
5 to 14 hours	4,068	28.2	1,748,728	26.5	5,663,904	27.3
15 to 29 hours	2,185	15.1	811,397	12.3	2,511,024	12.1
30 hours or more	1,466	10.2	588,433	8.9	1,785,591	8.6

Note: Measures the time spent during the week before the Census doing domestic work without pay for themselves and their household.

More information on [Unpaid domestic work: number of hours \(DOMP\)](#).

Table based on place of usual residence

Health

Type of long-term health condition All people	Ulladulla	%	New South Wales	%	Australia	%
Arthritis	2,745	16.1	679,359	8.4	2,150,396	8.5
Asthma	1,412	8.3	625,835	7.8	2,068,020	8.1
Cancer (including remission)	771	4.5	227,981	2.8	732,152	2.9
Dementia (including Alzheimer's)	175	1.0	62,706	0.8	189,162	0.7
Diabetes (excluding gestational diabetes)	1,021	6.0	388,747	4.8	1,198,721	4.7
Heart disease (including heart attack or angina)	1,026	6.0	316,840	3.9	999,096	3.9
Kidney disease	259	1.5	77,272	1.0	231,777	0.9
Lung condition (including COPD or emphysema)	520	3.1	135,909	1.7	441,109	1.7
Mental health condition (including depression or anxiety)	1,742	10.2	646,412	8.0	2,231,543	8.8
Stroke	234	1.4	73,269	0.9	234,609	0.9
Any other long-term health condition(s)	1,489	8.7	626,827	7.8	2,041,929	8.0
No long-term health condition(s)	8,818	51.8	4,925,422	61.0	15,292,718	60.2
Not stated	1,375	8.1	654,833	8.1	2,066,251	8.1

Note 1: Respondents had the option of reporting multiple long-term health conditions. Therefore, the sum of all long-term health condition responses for an area will not equal the total number of people in the area.

Note 2: Calculated percentages represent a proportion of the number of people in the area (including those who did not answer the long-term health conditions question).

More information on [Type of long-term health condition \(LTHP\)](#).

Table based on place of usual residence

Count of selected long-term health conditions All people	Ulladulla	%	New South Wales	%	Australia	%
None of the selected conditions	9,435	55.4	5,240,109	64.9	16,302,537	64.1
One condition	3,807	22.4	1,480,498	18.3	4,791,516	18.8
Two conditions	1,531	9.0	456,604	5.7	1,490,344	5.9
Three or more conditions	880	5.2	240,117	3.0	772,142	3.0
Not stated	1,375	8.1	654,833	8.1	2,066,251	8.1

Note: Selected long-term health conditions include arthritis, asthma, cancer (including remission), dementia (including Alzheimer's), diabetes (excluding gestational diabetes), heart disease (including heart attack or angina), kidney disease, lung condition (including COPD or emphysema), mental health condition (including depression or anxiety) and stroke. Other long-term health conditions are not included in this count.

More information on [Count of selected long-term health conditions \(CLTHP\)](#)
Table based on place of usual residence

Australian Defence Force service

Australian Defence Force Service <i>People aged 15 years and over</i>	Ulladulla	%	New South Wales	%	Australia	%
Currently serving	27	0.2	24,512	0.4	84,865	0.4
Previously served (and not currently serving)	514	3.6	127,657	1.9	496,276	2.4
Has never served	13,047	90.5	6,050,636	91.6	18,954,152	91.2
Not stated	828	5.7	399,351	6.0	1,249,493	6.0

Note: Australian Defence Force Service includes service in the Regular and/or Reserves service. Includes Royal Australian Navy, Australian Army, Royal Australian Air Force, Second Australian Imperial Force, National Service and NORFORCE. Excludes service for non-Australian defence forces.

More information on [Australian Defence Force service \(ADFP\)](#).

Table based on place of usual residence

Families

Family composition	Ulladulla		New South Wales		Australia	
<i>All families</i>		%		%		%
Couple family without children	2,570	52.7	809,586	37.9	2,608,834	38.8
Couple family with children	1,468	30.1	954,588	44.7	2,944,140	43.7
One parent family	787	16.1	337,729	15.8	1,068,268	15.9
Other family	46	0.9	34,061	1.6	108,941	1.6

More information on [Family composition \(FMCf\)](#)

Table based on place of enumeration

Single (or lone) parents	Ulladulla		New South Wales		Australia	
<i>Proportion of the total single (or lone) parent population</i>		%		%		%
Male	N/A	20.5	N/A	19.0	N/A	19.6
Female	N/A	80.3	N/A	81.0	N/A	80.4

More information on [Sex of lone parent \(SLPP\)](#)

Table based on place of enumeration

Employment status of couple families	Ulladulla		New South Wales		Australia	
<i>Couple families where parents or partners were aged 15 years and over</i>		%		%		%
Both employed, worked full-time	451	11.2	382,754	21.7	1,234,626	22.2
Both employed, worked part-time	281	7.0	83,120	4.7	264,182	4.8
One employed full-time, one part-time	699	17.3	320,350	18.2	1,155,042	20.8
One employed full-time, other not working	292	7.2	217,325	12.3	692,497	12.5
One employed part-time, other not working	312	7.7	111,828	6.3	339,960	6.1
Both not working	1,591	39.4	403,262	22.9	1,163,744	21.0
Other	244	6.0	181,101	10.3	449,640	8.1
Labour force status not stated	175	4.3	64,433	3.7	253,286	4.6

Note: The ABS Labour Force Survey provides the official estimates of Australia's labour force. More information is provided in [Comparing 2021 Census and Labour Force Survey](#).

More information on [Labour force status of parents/partners in families \(LFSF\)](#)

Table based on place of enumeration

Dwellings

Dwelling count

Private dwellings (excl. visitor only and other non-classifiable households)

	Ulladulla	%	New South Wales	%	Australia	%
Occupied private dwellings	6,970	77.1	2,900,468	90.6	9,275,217	89.9
Unoccupied private dwellings	2,068	22.9	299,524	9.4	1,043,776	10.1

More information on [Dwelling type \(DWTD\)](#).

Table based on place of enumeration

Dwelling structure

Occupied private dwellings (excl. visitor only and other non-classifiable households)

	Ulladulla	%	New South Wales	%	Australia	%
Separate house	6,021	86.4	1,902,734	65.6	6,710,582	72.3
Semi-detached, row or terrace house, townhouse etc	557	8.0	340,582	11.7	1,168,860	12.6
Flat or apartment	157	2.3	630,030	21.7	1,319,095	14.2
Other dwelling	208	3.0	19,374	0.7	54,711	0.6

More information on [Dwelling structure \(STRD\)](#).

Table based on place of enumeration

Number of bedrooms

Occupied private dwellings (excl. visitor only and other non-classifiable households)

	Ulladulla	%	New South Wales	%	Australia	%
None (includes studio apartments or bedsitters)	16	0.2	21,051	0.7	44,864	0.5
1 bedroom	188	2.7	190,792	6.6	488,681	5.3
2 bedrooms	996	14.3	657,578	22.7	1,768,530	19.1
3 bedrooms	3,037	43.6	1,006,121	34.7	3,617,803	39.0
4 or more bedrooms	2,634	37.8	983,314	33.9	3,224,351	34.8
Number of bedrooms not stated	100	1.4	41,623	1.4	130,989	1.4
Average number of bedrooms per dwelling	3.3	N/A	3.1	N/A	3.1	N/A
Average number of people per household	2.3	N/A	2.6	N/A	2.5	N/A

More information on [Number of bedrooms in a private dwelling \(BEDD\)](#), [Number of persons usually resident in dwelling \(NPRD\)](#).

Table based on place of enumeration

Number of registered motor vehicles <i>Occupied private dwellings (excl. visitor only and other non-classifiable households)</i>	Ulladulla	%	New South Wales	%	Australia	%
None	299	4.3	262,031	9.0	673,969	7.3
1 motor vehicle	2,777	39.8	1,096,761	37.8	3,353,737	36.2
2 motor vehicles	2,682	38.5	989,258	34.1	3,366,738	36.3
3 or more vehicles	1,110	15.9	508,694	17.5	1,745,924	18.8
Number of motor vehicles not stated	105	1.5	43,732	1.5	134,848	1.5

Note: Motor vehicles excludes motorbikes, motor scooters and heavy motor vehicles.

More information on [Number of registered motor vehicles \(VEHD\)](#)

Table based on place of enumeration

Housing

Household composition

Occupied private dwellings (excl. visitor only and other non-classifiable households)

	Ulladulla	%	New South Wales	%	Australia	%
Family households	4,794	68.8	2,065,107	71.2	6,542,648	70.5
Single (or lone) person households	2,008	28.8	723,716	25.0	2,370,742	25.6
Group households	169	2.4	111,646	3.8	361,822	3.9

More information on [Household composition \(HHCD\)](#).

Table based on place of enumeration

Tenure type

Occupied private dwellings (excl. visitor only and other non-classifiable households)

	Ulladulla	%	New South Wales	%	Australia	%
Owned outright	3,516	50.4	914,537	31.5	2,872,331	31.0
Owned with a mortgage (a)	1,705	24.5	942,804	32.5	3,242,449	35.0
Rented (b)	1,555	22.3	944,585	32.6	2,842,378	30.6
Other tenure type (c)	94	1.3	55,931	1.9	181,518	2.0
Tenure type not stated	107	1.5	42,613	1.5	136,538	1.5

(a) Includes dwellings purchased under a shared equity scheme.

(b) Excludes dwellings being occupied rent-free, this is not comparable to 2016 QuickStats data.

(c) Comprises dwellings occupied rent free, occupied under a life tenure scheme and other tenure type.

More information on [Tenure type \(TEND\)](#).

Table based on place of enumeration

Household income

Occupied private dwellings (excl. visitor only and other non-classifiable households)

	Ulladulla	%	New South Wales	%	Australia	%
Less than \$650 total household weekly income (a)	N/A	24.5	N/A	16.3	N/A	16.5
More than \$3,000 total household weekly income (a)	N/A	10.2	N/A	26.9	N/A	24.3

(a) Percentages (%) exclude dwellings with 'Partial income stated' or 'All incomes not stated.'

More information on [Total household income \(weekly\) \(HIND\)](#).

Table based on place of enumeration

Rent weekly payments**Occupied private dwellings (excl. visitor only and other non-classifiable households) being rented**

	Ulladulla		New South Wales		Australia	
		%		%		%
Median rent (a)	351	N/A	420	N/A	375	N/A
Renter households where rent payments are less than or equal to 30% of household income (b)	678	43.6	529,731	56.1	1,667,080	58.7
Renter households with rent payments greater than 30% of household income (b)	747	48.0	335,404	35.5	915,317	32.2
Unable to determine (c)	126	8.1	79,448	8.4	259,992	9.1

(a) Median rent calculations exclude dwellings being occupied rent-free, this is not comparable to 2016 QuickStats data.

(b) This is not comparable with historical QuickStats, as applicable households included in this calculation have changed. For details on how Household income is derived please refer to [RAID](#).

(c) Unable to determine includes those households in which income and/or housing costs were not, or were only partially stated, by persons in the household.

More information on [Rent payments \(weekly\) \(RNTD\)](#), [Rent affordability indicator \(RAID\)](#).

Table based on place of enumeration

Mortgage monthly repayments**Occupied private dwellings (excl. visitor only and other non-classifiable households) owned with a mortgage or purchased under a shared equity scheme**

	Ulladulla		New South Wales		Australia	
		%		%		%
Median mortgage repayments	1,647	N/A	2,167	N/A	1,863	N/A
Owner with mortgage households where mortgage repayments are less than or equal to 30% of household income (a)	1,235	72.4	677,486	71.9	2,398,902	74.0
Owner with mortgage households with mortgage repayments greater than 30% of household income (a)	282	16.5	163,060	17.3	468,817	14.5
Unable to determine (b)	183	10.7	102,255	10.8	374,734	11.6

(a) This is not comparable with historical QuickStats, as applicable households included in this calculation have changed. For details on how Household income is derived please refer to [MAID](#).

(b) Unable to determine includes those households in which income and/or housing costs were not, or were only partially stated, by persons in the household.

More information on [Mortgage repayments \(monthly\) \(MRED\)](#), [Mortgage affordability indicator \(MAID\)](#).

Table based on place of enumeration

Aboriginal and/or Torres Strait Islander peoples

People characteristics <i>Aboriginal and/or Torres Strait Islander people</i>	Ulladulla	%	New South Wales	%	Australia	%
Male	362	51.8	138,179	49.7	403,709	49.7
Female	337	48.2	139,862	50.3	409,025	50.3
Median age	25	N/A	23	N/A	24	N/A

More information on [Sex \(SEXP\)](#), [Indigenous status \(INGP\)](#)

Table based on place of usual residence

Dwelling characteristics <i>Occupied private dwellings (excl. visitor only and other non-classifiable households) where at least one person was Aboriginal and/or Torres Strait Islander</i>	Ulladulla	%	New South Wales	%	Australia	%
Average number of people per household	2.9	N/A	3.1	N/A	3.1	N/A
Average number of people per bedroom	0.9	N/A	1	N/A	1	N/A
Median weekly household income (a)	1,226	N/A	1,558	N/A	1,507	N/A

(a) Excludes households where at least one person aged 15 years and over in the household did not state their income.

More information on [Number of bedrooms in a private dwelling \(BEDD\)](#), [Household composition \(HHCD\)](#), [Total household income \(HIND\)](#), [Indigenous household indicator \(INGDWTD\)](#)

Table based on place of enumeration

Mortgage and rent <i>Occupied private dwellings (excl. visitor only and other non-classifiable households) where at least one person was Aboriginal and/or Torres Strait Islander</i>	Ulladulla	%	New South Wales	%	Australia	%
Median weekly rent (a)	350	N/A	340	N/A	300	N/A
Median monthly mortgage repayments	1,733	N/A	1,755	N/A	1,721	N/A

(a) Median rent calculations exclude dwellings being occupied rent-free, this is not comparable to 2016 QuickStats data.

More information on [Rent weekly payments \(RNTD\)](#), [Mortgage monthly repayments \(MRED\)](#), [Indigenous household indicator \(INGDWTD\)](#)

Table based on place of enumeration

Please note that there are small random adjustments made to all cell values to protect the confidentiality of data. These adjustments may cause the sum of rows or columns to differ by small amounts from table totals.

Our ref: DOC23/198450

Ms Deanne Furlong
Russell Corporate Advisory

By email to: deanne.furlong@russellcorporate.com.au

31 August 2023

Dear Ms Furlong

Application No.	1-8654791082
Applicant	MILTON ULLADULLA EX-SERVOS CLUB LIMITED
Application for	Gaming Machine Threshold increase with Class 1 LIA
Licence name	Milton Ulladulla Ex-Servos Club Limited
Licence number	LIQC300231674
Trading hours	Monday to Sunday 05:00 AM – 05:00 AM
Shutdown hours	Monday to Friday 03:00 AM – 09:00 AM Saturday to Sunday 04:00 AM – 10:00 AM
Premises	212-222 Princes Highway Ulladulla NSW 2539
Legislation	Sections 3, 34, 35, 36 and 37B of the <i>Gaming Machines Act 2001</i>

**Decision of the Independent Liquor & Gaming Authority
Application for a gaming machine threshold increase with class 1 LIA – Milton Ulladulla Ex-Servos Club Limited**

The Independent Liquor & Gaming Authority (Authority) considered the application above and decided on 21 June 2023 to **refuse** the application under section 34 of the *Gaming Machines Act 2001*.

Statement of reasons

The statement of reasons will be published on the [Liquor & Gaming NSW website](https://www.liquorandgaming.nsw.gov.au) in accordance with section 36C of the *Gaming and Liquor Administration Act 2007*.

If you have any questions

Please contact the case manager, Michelle Stark, at Michelle.Stark@liquorandgaming.nsw.gov.au if you have any questions.

Yours sincerely



Caroline Lamb
Chairperson

For and on behalf of the **Independent Liquor & Gaming Authority**

STATEMENT OF REASONS

Our decision

We **refuse** the application under section 34 of the *Gaming Machines Act 2001* (the Act).

The profit per gaming machine is 80% higher than comparable venues. Noting the established correlation between late night gaming and gambling related harm and the venue's post-midnight operating hours, above average participation rates and a high representation of young and indigenous people, the proposed increase by a further 20 electronic gaming machines (EGMs) has the potential to exacerbate problem gambling in the community.

The application is subject to a Local Impact Assessment (LIA). The Authority has declined to approve the LIA as we are not satisfied that there was a positive contribution to the local community, noting that the proposed contribution was not consented to by the applicant.

Our findings

Procedural requirements

The Local Impact Assessment (LIA) meets the relevant procedural requirements.

The Authority is satisfied that the secretary of the club holds a recognised competency card with a current RCG endorsement.

Community impact

Local and broader communities

The relevant 'local community' is the community in the suburb of Ulladulla, and the relevant 'broader community' comprises the Local Government Area of Shoalhaven.

Office of Responsible Gambling identified risk factors

The Office of Responsible Gambling (ORG) has identified a number of problem gaming risk indicators for local areas and recommend proceeding with caution in cases where these exceed NSW average figures. The following risk indicators have been identified for the Shoalhaven LGA:

- the proportion of the total population aged 15 years and over who have completed Year 12 or equivalent or higher is below the NSW average
- the population who are indigenous is higher than the NSW average
- the proportion of lone person households is above the NSW average

ABS Socio-Economic Index for Areas (SEIFA)

Data as a 2016 shows that Ulladulla and the Shoalhaven LGA were relatively disadvantaged in terms of household income and residents in skilled occupations compared to other suburbs and LGAs in NSW.

Findings of concern

We are concerned that if the application were granted it may increase the harm associated with the misuse and abuse of gambling activities or fail to facilitate the balanced development, in the public interest, of the gaming industry due to:

- the high gaming intensity at the venue - average profit per gaming machine is an 80% increase on comparable venues
- the club having unrestricted hours, allowing for up to 23 hours per week post-midnight, with 9 of these during the higher risk post-2:00AM period
- 3 of the 6 Office of Responsible Gambling (ORG) problem gambling risk factors being present in the Shoalhaven LGA

- the gambling participation rate for poker machines and gaming machines being above average when compared to the NSW rate.

The risks may be mitigated by the following factors:

- the venue being surrounded by Band 1 SA2s (although being located in a Band 2 SA2)
- the venue's gaming plan of management (GPOM) having been assessed as exceeding the Authority's standard for a venue of this profile and satisfying the Authority's decision matrix
- the local area exhibiting problem gambler prevalence on par with NSW and a below average rate of combined low risk, moderate risk and problem gamblers when compared to the NSW average
- while Milton Ulladulla Ex-Servos Club's licensed trading hours are unrestricted, based on current advertising, the venue does not operate past 2:00am on any night of the week.

The material we considered

We considered all the material we received about the application, including:

Application Material

- completed application dated 19 December 2022
- completed Class 1 Local Impact Assessment (LIA) dated 19 December 2022
- notification of advertising dated 21 December 2022
- letter from the applicant regarding the financial contribution dated 20 April 2023
- gaming plan of management documents for the premises dated 18 May 2023 which includes floor plan for the premises at Annexure A.

Other relevant material

- correspondence between L&GNSW staff and the applicant between 19 December 2022 and 22 May 2023 in relation to the assessment of the Application.

The law that applies

These sections of the *Gaming Machines Act 2001* apply to this application:

- Section 3: Statutory objects of the Act and other relevant considerations
- Section 34: application to increase gaming machine threshold
- Section 35: requirements relating to threshold increase applications
- Section 36: approval of LIA by Authority
- Section 37B: restriction on gaming machine thresholds

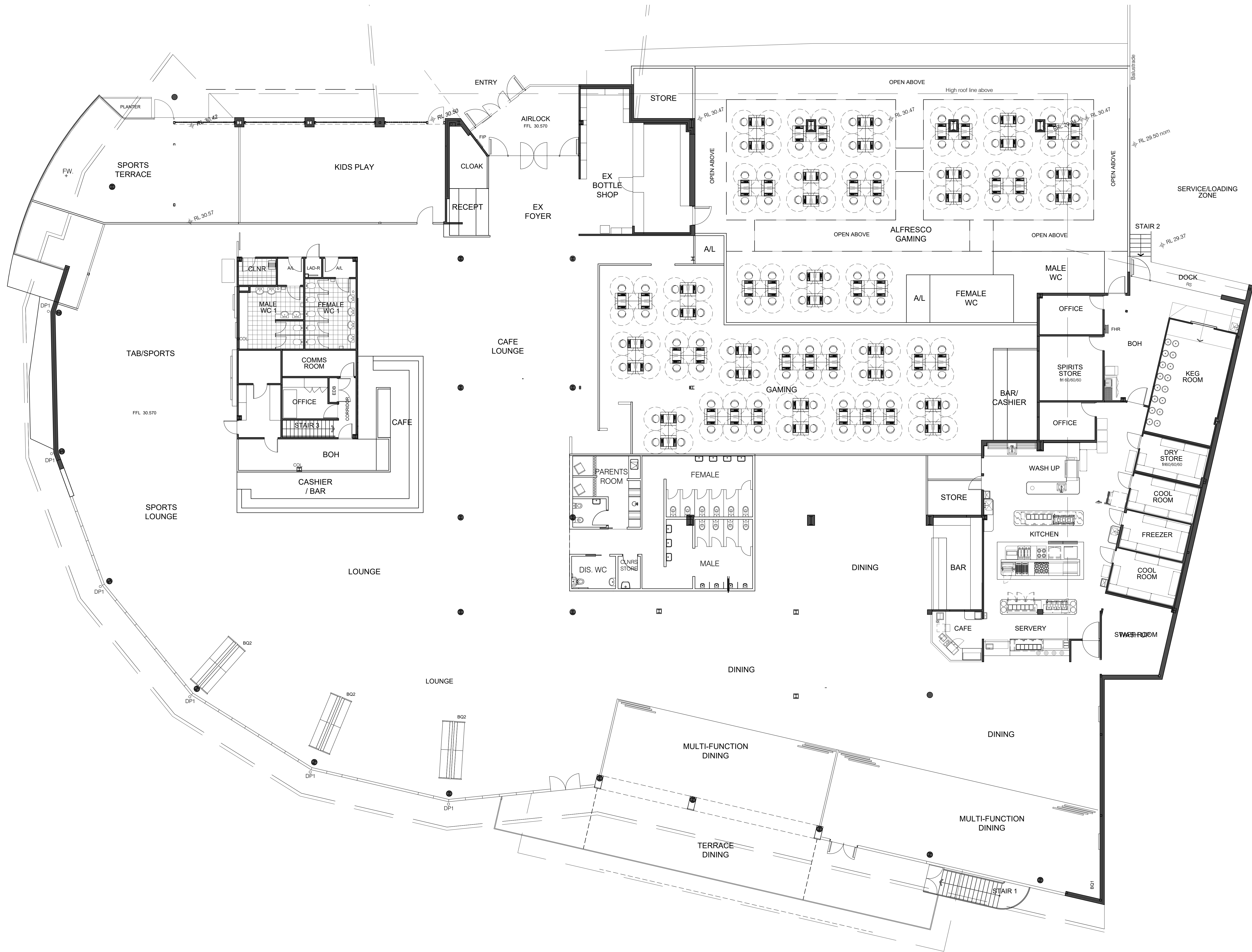
Yours sincerely



Caroline Lamb

Chairperson

For and on behalf of the **Independent Liquor & Gaming Authority**



Annexure C

REV.	DATE	NOTE	DRAWING	PROPOSED MASTERPLAN			DWG NO.	SK02	REV.	P1
P1	04/04/2022	PRELIMINARY ISSUE	CLIENT	MILTON ULLADULLA EX SERVOS CLUB			SCALE	1:100 @ B1		
			SITE	210 PRINCESS HIGHWAY ULLADULLA			<div><div></div><div>0000</div><div>1000</div><div>2000</div><div>3000</div><div>4000</div><div>5000</div></div>			
			PROJECT NO.	2202	DATE	MARCH 2022	PO Box 1249 Double Bay NSW 1360			
Do not scale from drawings. Use figured dimensions only. Verify all dimensions on site prior to commencement of any work. Any discrepancies shall be immediately be referred to Abeo Architects for clarification. Copyright remains the property of Abeo Architects.			DRAWN BY	DW	CHECKED BY	DW	E info@abeoarchitects.com		P 02 9358 0700	
							Nominated Architect Daniel Wilsdon Reg No 7679			
abeoarchitects										



The ABS is seeking feedback on how you access Census data and where this could be improved. Please [share your thoughts](#).

✔ Latest release

Shoalhaven

2021 Census All persons QuickStats

Geography type [Local Government Areas](#)

Area code LGA16950



Map data © OpenStreetMap contributors, CC-BY-SA Powered by Esri

	People	108,531
	Male	49.5%
	Female	50.5%
	Median age	48
	Families	30,043
	Average number of children per family	
	for families with children	1.8
	for all households (a)	0.6
	All private dwellings	58,692
	Average number of people per household	2.3
	Median weekly household income	\$1,250
	Median monthly mortgage repayments	\$1,733
	Median weekly rent (b)	\$350
	Average number of motor vehicles per dwelling	1.9

(a) This label has been updated to more accurately reflect the Census concept shown in this data item. The data has not changed.
(b) For 2021, median weekly rent calculations exclude dwellings being occupied rent-free.

Small random changes have been made to all cell values for privacy reasons. These changes may cause the sum of rows or columns to differ by small amounts from the table totals.

People and population

People <i>All people</i>	Shoalhaven	%	New South Wales	%	Australia	%
Male	53,719	49.5	3,984,166	49.4	12,545,154	49.3
Female	54,813	50.5	4,087,995	50.6	12,877,635	50.7

More information on [Sex \(SEXP\)](#), [Place of usual residence \(PURP\)](#).
Table based on place of usual residence

Indigenous status <i>All people</i>	Shoalhaven	%	New South Wales	%	Australia	%
Aboriginal and/or Torres Strait Islander	7,067	6.5	278,043	3.4	812,728	3.2
Non-Indigenous	95,299	87.8	7,404,499	91.7	23,375,949	91.9
Indigenous status not stated	6,164	5.7	389,616	4.8	1,234,112	4.9

More information on [Indigenous status \(INGP\)](#).
Table based on place of usual residence

Age <i>All people</i>	Shoalhaven	%	New South Wales	%	Australia	%
Median age	48	N/A	39	N/A	38	N/A
0-4 years	5,448	5.0	468,056	5.8	1,463,817	5.8
5-9 years	5,839	5.4	500,810	6.2	1,586,138	6.2
10-14 years	6,050	5.6	501,135	6.2	1,588,051	6.2
15-19 years	5,461	5.0	457,896	5.7	1,457,812	5.7
20-24 years	4,756	4.4	496,185	6.1	1,579,539	6.2
25-29 years	5,362	4.9	555,967	6.9	1,771,676	7.0
30-34 years	5,669	5.2	586,057	7.3	1,853,085	7.3
35-39 years	5,665	5.2	580,185	7.2	1,838,822	7.2
40-44 years	5,465	5.0	522,984	6.5	1,648,843	6.5
45-49 years	5,900	5.4	516,915	6.4	1,635,963	6.4
50-54 years	6,397	5.9	500,027	6.2	1,610,944	6.3
55-59 years	7,366	6.8	490,155	6.1	1,541,911	6.1
60-64 years	8,726	8.0	471,628	5.8	1,468,097	5.8
65-69 years	8,709	8.0	416,493	5.2	1,298,460	5.1
70-74 years	8,373	7.7	372,234	4.6	1,160,768	4.6
75-79 years	5,936	5.5	268,110	3.3	821,920	3.2
80-84 years	3,897	3.6	183,409	2.3	554,598	2.2
85 years and over	3,504	3.2	183,895	2.3	542,342	2.1

More information on [Age \(AGEP\)](#).
Table based on place of usual residence

Registered marital status <i>People aged 15 years and over</i>	Shoalhaven	%	New South Wales	%	Australia	%
Married	43,425	47.6	3,124,151	47.3	9,665,708	46.5
Separated	3,352	3.7	209,657	3.2	674,590	3.2
Divorced	10,115	11.1	569,516	8.6	1,831,952	8.8
Widowed	6,517	7.1	339,990	5.1	1,029,142	5.0
Never married	27,769	30.5	2,358,844	35.7	7,583,393	36.5

Note: In December 2017, amendments to the Marriage Act 1961 came into effect enabling marriage equality for all couples. For 2021, registered marriages include all couples.

More information on [Registered marital status \(MSTP\)](#).
Table based on place of usual residence

Social marital status							
<i>People aged 15 years and over, usually resident and present in the household on Census night</i>							
	Shoalhaven	%	New South Wales	%	Australia	%	
Registered marriage (a)	38,929	48.2	2,847,938	47.3	8,747,135	46.6	
De facto marriage (b)	9,877	12.2	637,050	10.6	2,168,351	11.5	
Not married	32,034	39.6	2,532,544	42.1	7,863,327	41.9	

(a) In December 2017, amendments to the Marriage Act 1961 came into effect enabling marriage equality for all couples. For 2021, registered marriages include all couples.

(b) De facto marriage is when two people live together as partners who are not in a registered marriage. It includes people who report de facto, partner, common law husband/wife/spouse, lover, girlfriend or boyfriend.

More information on [Social marital status \(MDCP\)](#).

Table based on place of usual residence

Education

Type of educational institution attending People attending an educational institution	Shoalhaven	%	New South Wales	%	Australia	%
Preschool	2,126	7.6	167,196	6.8	484,185	6.3
<i>Primary</i>						
Primary - Government	6,063	21.6	444,985	18.1	1,421,300	18.5
Primary - Catholic	696	2.5	127,487	5.2	396,758	5.2
Primary - other non-Government	725	2.6	77,876	3.2	254,043	3.3
Primary total (a)	7,502	26.7	651,375	26.5	2,075,224	27.0
<i>Secondary</i>						
Secondary - Government	3,999	14.3	290,414	11.8	934,138	12.2
Secondary - Catholic	956	3.4	126,180	5.1	371,022	4.8
Secondary - other non-Government	832	3.0	94,885	3.9	322,314	4.2
Secondary total (b)	5,797	20.7	512,195	20.9	1,629,624	21.2
<i>Tertiary</i>						
Tertiary - Vocational education (including TAFE and private training providers)	2,379	8.5	207,586	8.5	601,901	7.8
Tertiary - University or other higher education	2,051	7.3	375,032	15.3	1,185,450	15.4
Tertiary total (c)	4,432	15.8	583,617	23.8	1,789,994	23.3
Other	530	1.9	74,331	3.0	242,821	3.2
Not stated	7,672	27.3	465,268	19.0	1,456,618	19.0

(a) Includes Primary - not further defined.

(b) Includes Secondary - not further defined.

(c) Includes Tertiary - not further defined.

More information on [Type of educational institution attending \(TYPP\)](#).

Table based on place of usual residence

Level of highest educational attainment People aged 15 years and over	Shoalhaven	%	New South Wales	%	Australia	%
Bachelor Degree level and above	14,414	15.8	1,838,502	27.8	5,464,631	26.3
Advanced Diploma and Diploma level	8,263	9.1	616,322	9.3	1,946,738	9.4
Certificate level IV	4,257	4.7	216,768	3.3	719,425	3.5
Certificate level III	16,299	17.9	771,009	11.7	2,617,766	12.6
Year 12	9,523	10.4	954,987	14.5	3,104,116	14.9
Year 11	3,004	3.3	212,538	3.2	958,803	4.6
Year 10	13,656	15.0	698,390	10.6	2,086,306	10.0
Certificate level II	117	0.1	4,703	0.1	13,687	0.1
Certificate level I	10	0.0	764	0.0	2,614	0.0
Year 9 or below	9,126	10.0	487,855	7.4	1,490,444	7.2
Inadequately described	2,920	3.2	184,252	2.8	506,259	2.4
No educational attainment	253	0.3	64,827	1.0	175,844	0.8
Not stated	9,328	10.2	549,965	8.3	1,694,773	8.2

More information on [Level of highest educational attainment \(HEAP\)](#).

Table based on place of usual residence

Cultural diversity

Ancestry, top responses All people	Shoalhaven	%	New South Wales	%	Australia	%
English	46,805	43.1	2,404,990	29.8	8,385,928	33.0
Australian	43,681	40.2	2,307,549	28.6	7,596,753	29.9
Irish	12,732	11.7	735,340	9.1	2,410,833	9.5
Scottish	11,787	10.9	620,363	7.7	2,176,777	8.6
Australian Aboriginal	6,448	5.9	259,592	3.2	741,307	2.9

Note 1: Respondents had the option of reporting up to two ancestries on their Census form, and this is captured by the Ancestry multi response (ANCP) variable used in this table. Therefore, the sum of all ancestry responses for an area will not equal the total number of people in the area.

Note 2: Calculated percentages represent a proportion of the number of people in the area (including those who did not state an ancestry). In 2016 QuickStats percentages were based on total number of responses and will not be comparable to this table.

More information on [Ancestry multi response \(ANCP\)](#).

Table based on place of usual residence

Country of birth, top responses All people	Shoalhaven	%	New South Wales	%	Australia	%
Australia	86,780	80.0	5,277,497	65.4	17,019,815	66.9
Other top responses:						
England	4,807	4.4	231,385	2.9	927,490	3.6
New Zealand	1,334	1.2	118,527	1.5	530,492	2.1
Philippines	569	0.5	106,930	1.3	293,892	1.2
Scotland	552	0.5	27,659	0.3	118,496	0.5
Germany	547	0.5	28,921	0.4	101,255	0.4

More information on [Country of birth of person \(BPLP\)](#).

Table based on place of usual residence

Country of birth of parents All people	Shoalhaven	%	New South Wales	%	Australia	%
Both parents born overseas	18,305	16.9	3,181,894	39.4	9,321,603	36.7
Father only born overseas	7,296	6.7	509,789	6.3	1,670,476	6.6
Mother only born overseas	5,322	4.9	369,492	4.6	1,257,942	4.9
Both parents born in Australia	69,746	64.3	3,529,168	43.7	11,663,577	45.9
Not stated	7,850	7.2	481,824	6.0	1,509,188	5.9

Note: For the 2021 Census, guidance was provided to respondents on how to answer for mother/father if their birth parent is unknown or they have same-sex parents.

More information on [Country of birth of parents \(BPPP\)](#).

Table based on place of usual residence

Country of birth of father, top stated responses All people	Shoalhaven	%	New South Wales	%	Australia	%
Australia	75,332	69.4	3,909,559	48.4	12,959,282	51.0
England	8,327	7.7	412,867	5.1	1,626,778	6.4
New Zealand	1,905	1.8	155,208	1.9	673,661	2.6
Scotland	1,484	1.4	69,657	0.9	272,233	1.1
Italy	986	0.9	130,127	1.6	477,065	1.9

Note: For the 2021 Census, guidance was provided to respondents on how to answer for father if their birth parent is unknown or they have same-sex parents.

More information on [Country of birth of father \(BPMP\)](#).

Table based on place of usual residence

Country of birth of mother, top stated responses All people	Shoalhaven	%	New South Wales	%	Australia	%
Australia	77,339	71.3	4,053,583	50.2	13,383,605	52.6
England	7,716	7.1	365,398	4.5	1,488,479	5.9
New Zealand	1,768	1.6	148,110	1.8	650,743	2.6
Scotland	1,279	1.2	60,233	0.7	241,428	0.9
Germany	918	0.8	48,367	0.6	173,712	0.7

Note: For the 2021 Census, guidance was provided to respondents on how to answer for mother if their birth parent is unknown or they have same-sex parents.

More information on [Country of birth of mother \(BPFP\)](#)

Table based on place of usual residence

Religious affiliation, top responses All people	Shoalhaven	%	New South Wales	%	Australia	%
No Religion, so described	44,661	41.2	2,644,165	32.8	9,767,448	38.4
Anglican	19,817	18.3	960,305	11.9	2,496,273	9.8
Catholic	19,514	18.0	1,807,730	22.4	5,075,907	20.0
Not stated	8,507	7.8	548,340	6.8	1,751,052	6.9
Uniting Church	2,887	2.7	172,132	2.1	673,260	2.6

Note: 'No Religion, so described' does not include those who reported Secular and Other Spiritual Beliefs such as Atheism, Agnosticism and Own Spiritual Beliefs.

In Shoalhaven, Christianity was the largest broad group religious group reported overall (52.1%) (excludes Not stated). The broad group level is the highest and most general level of the [Australian Standard Classification of Religious Groups, 2016](#).

More information on [Religious affiliation \(RELPA\)](#)

Table based on place of usual residence

Language used at home, top responses (other than English) All people	Shoalhaven	%	New South Wales	%	Australia	%
Greek	343	0.3	78,691	1.0	229,643	0.9
Spanish	330	0.3	71,868	0.9	171,370	0.7
Italian	322	0.3	64,039	0.8	228,042	0.9
German	277	0.3	20,161	0.2	70,247	0.3
Tagalog	232	0.2	51,616	0.6	131,195	0.5
English only used at home	95,928	88.4	5,457,982	67.6	18,303,662	72.0
Households where a non-English language is used	2,817	6.6	856,911	29.5	2,295,688	24.8

More information on [Language used at home \(LANP\)](#)

Languages used at home data is based on place of usual residence

Households where a non-English language is used is based on place of enumeration

Income and work

Participation in the labour force <i>People aged 15 years and over</i>	Shoalhaven	%	New South Wales	%	Australia	%
In the labour force	44,471	48.8	3,874,012	58.7	12,695,853	61.1
Not in the labour force	41,077	45.0	2,341,417	35.5	6,888,081	33.1
Not stated	5,644	6.2	386,728	5.9	1,200,851	5.8

Note 1: Calculated percentages represent a proportion of people aged 15 and over in the area.

Note 2: The ABS Labour Force Survey provides the official estimates of Australia's labour force. More information is provided in [Comparing 2021 Census and Labour Force Survey](#).

More information on [Labour force status \(LFSP\)](#).

Table based on place of usual residence

Employment status <i>People who reported being in the labour force, aged 15 years and over</i>	Shoalhaven	%	New South Wales	%	Australia	%
Worked full-time	22,299	50.1	2,136,610	55.2	7,095,103	55.9
Worked part-time	16,673	37.5	1,151,660	29.7	3,962,550	31.2
Away from work (a)	3,329	7.5	395,888	10.2	991,758	7.8
Unemployed	2,181	4.9	189,852	4.9	646,442	5.1

Note 1: Calculated percentages represent a proportion of people aged 15 and over who reported being in the labour force in the area.

Note 2: The ABS Labour Force Survey provides the official estimates of Australia's labour force. More information is provided in [Comparing 2021 Census and Labour Force Survey](#).

(a) Counts employed people who reported 0 hours of work the week before the Census or did not state their hours of work.

More information on [Labour force status \(LFSP\)](#).

Table based on place of usual residence

Employment, hours worked <i>Employed people aged 15 years and over</i>	Shoalhaven	%	New South Wales	%	Australia	%
0 hours (away from work)	2,517	6.0	331,611	9.0	787,382	6.5
1-19 hours	7,488	17.7	504,158	13.7	1,681,120	14.0
20-29 hours	5,601	13.2	400,415	10.9	1,373,403	11.4
30-34 hours	3,579	8.5	247,088	6.7	908,031	7.5
35-39 hours	8,266	19.5	751,277	20.4	2,487,056	20.6
40-44 hours	7,654	18.1	768,161	20.9	2,448,402	20.3
45 hours or more	6,371	15.1	617,176	16.8	2,159,645	17.9

Note: Records the number of hours worked in all jobs held during the week before Census Night for employed people aged 15 years and over. This excludes any time off but includes any overtime or extra time worked.

More information on [Hours worked \(HRSP\)](#).

Table based on place of usual residence

Occupation, top responses <i>Employed people aged 15 years and over</i>	Shoalhaven	%	New South Wales	%	Australia	%
Professionals	7,636	18.1	952,131	25.8	2,886,921	24.0
Technicians and Trades Workers	7,012	16.6	436,589	11.9	1,554,313	12.9
Community and Personal Service Workers	6,305	14.9	390,779	10.6	1,382,205	11.5
Managers	5,288	12.5	536,820	14.6	1,645,769	13.7
Labourers	4,638	11.0	300,966	8.2	1,086,120	9.0
Clerical and Administrative Workers	4,607	10.9	480,612	13.0	1,525,311	12.7
Sales Workers	3,983	9.4	294,889	8.0	986,433	8.2
Machinery Operators and Drivers	2,130	5.0	222,186	6.0	755,863	6.3

More information on [Occupation \(OCCP\)](#).

Table based on place of usual residence

Industry of employment, top responses Employed people aged 15 years and over	Shoalhaven	%	New South Wales	%	Australia	%
Defence	1,740	4.1	23,356	0.6	85,021	0.7
Hospitals (except Psychiatric Hospitals)	1,493	3.5	153,159	4.2	545,158	4.5
Aged Care Residential Services	1,420	3.4	80,859	2.2	258,274	2.1
Supermarket and Grocery Stores	1,304	3.1	92,329	2.5	299,810	2.5
Other Social Assistance Services	1,224	2.9	87,430	2.4	278,221	2.3

More information on [Industry of employment \(INDP\)](#).
Table based on place of usual residence

Median weekly incomes (a) People aged 15 years and over	Shoalhaven	%	New South Wales	%	Australia	%
Personal (b)	\$634	N/A	\$813	N/A	\$805	N/A
Family (c)	\$1,537	N/A	\$2,185	N/A	\$2,120	N/A
Household (d)	\$1,250	N/A	\$1,829	N/A	\$1,746	N/A

(a) Incomes are collected in ranges. The medians are then calculated using information from the Survey of Income and Housing.

(b) Excludes people aged 15 years and over who did not state their income.

(c) Excludes families where at least one family member aged 15 years and over did not state their income.

(d) Excludes households where at least one household member aged 15 years and over did not state their income.

More information on [Total personal income \(INCP\)](#), [Total family income \(FINF\)](#), [Total household income \(HIND\)](#).

Personal income data is based on place of usual residence

Family and household income data is based on place of enumeration

Method of travel to work on the day of the Census, top responses Employed people aged 15 years and over	Shoalhaven	%	New South Wales	%	Australia	%
Car, as driver	26,961	63.7	1,587,613	43.1	6,347,498	52.7
Car, as passenger	1,942	4.6	117,143	3.2	466,904	3.9
Walked only	1,170	2.8	92,368	2.5	306,045	2.5
Truck	478	1.1	26,390	0.7	76,657	0.6
Bicycle	210	0.5	14,466	0.4	79,089	0.7
Did not go to work	5,049	11.9	487,646	13.2	1,417,449	11.8
Worked at home	5,305	12.5	1,141,467	31.0	2,531,262	21.0
People who travelled to work by public transport (a)	152	0.4	147,492	4.0	554,711	4.6
People who travelled to work by car as driver or passenger (b)	29,186	69.0	1,737,359	47.2	6,961,762	57.8

Note: Respondents had the option to report up to three methods of travel to work on the day of the Census.

(a) Includes people who used public transport (train, bus, ferry, tram/light rail), as at least one of their methods of travel to work on Census day.

(b) Includes people who travelled by car (as a driver, or as a passenger), as at least one of their methods of travel to work on Census day.

More information on [Method of travel to work \(MTWP\)](#).

Table based on place of usual residence

Unpaid work and care

Unpaid work and care <i>People aged 15 years and over</i>	Shoalhaven	%	New South Wales	%	Australia	%
Did unpaid domestic work (week before Census Night)	62,677	68.7	4,392,869	66.5	14,077,657	67.7
Provided unpaid care for child/children (during two weeks before Census Night)	21,093	23.1	1,669,763	25.3	5,471,756	26.3
Provided unpaid assistance to a person with a disability, health condition or due to old age (during two weeks before Census Night)	12,338	13.5	759,383	11.5	2,476,681	11.9
Did voluntary work through an organisation or group (last 12 months)	14,005	15.4	857,891	13.0	2,933,646	14.1

More information on [Unpaid domestic work \(DOMP\)](#), [Unpaid child care \(CHCAREP\)](#), [Unpaid assistance to a person with a disability, health condition or due to old age \(UNCAREP\)](#), [Voluntary work for an organisation or group \(VOLWP\)](#).

Table based on place of usual residence

Unpaid domestic work, number of hours <i>People aged 15 years and over</i>	Shoalhaven	%	New South Wales	%	Australia	%
Less than 5 hours	15,505	17.0	1,244,306	18.8	4,117,135	19.8
5 to 14 hours	24,741	27.1	1,748,728	26.5	5,663,904	27.3
15 to 29 hours	12,841	14.1	811,397	12.3	2,511,024	12.1
30 hours or more	9,593	10.5	588,433	8.9	1,785,591	8.6

Note: Measures the time spent during the week before the Census doing domestic work without pay for themselves and their household.

More information on [Unpaid domestic work: number of hours \(DOMP\)](#).

Table based on place of usual residence

Health

Type of long-term health condition All people	Shoalhaven	%	New South Wales	%	Australia	%
Arthritis	15,934	14.7	679,359	8.4	2,150,396	8.5
Asthma	9,772	9.0	625,835	7.8	2,068,020	8.1
Cancer (including remission)	4,851	4.5	227,981	2.8	732,152	2.9
Dementia (including Alzheimer's)	1,256	1.2	62,706	0.8	189,162	0.7
Diabetes (excluding gestational diabetes)	7,002	6.5	388,747	4.8	1,198,721	4.7
Heart disease (including heart attack or angina)	6,432	5.9	316,840	3.9	999,096	3.9
Kidney disease	1,966	1.8	77,272	1.0	231,777	0.9
Lung condition (including COPD or emphysema)	3,526	3.2	135,909	1.7	441,109	1.7
Mental health condition (including depression or anxiety)	12,210	11.3	646,412	8.0	2,231,543	8.8
Stroke	1,620	1.5	73,269	0.9	234,609	0.9
Any other long-term health condition(s)	10,049	9.3	626,827	7.8	2,041,929	8.0
No long-term health condition(s)	54,250	50.0	4,925,422	61.0	15,292,718	60.2
Not stated	10,319	9.5	654,833	8.1	2,066,251	8.1

Note 1: Respondents had the option of reporting multiple long-term health conditions. Therefore, the sum of all long-term health condition responses for an area will not equal the total number of people in the area.

Note 2: Calculated percentages represent a proportion of the number of people in the area (including those who did not answer the long-term health conditions question).

More information on [Type of long-term health condition \(LTHP\)](#)

Table based on place of usual residence

Count of selected long-term health conditions All people	Shoalhaven	%	New South Wales	%	Australia	%
None of the selected conditions	58,378	53.8	5,240,109	64.9	16,302,537	64.1
One condition	24,215	22.3	1,480,498	18.3	4,791,516	18.8
Two conditions	9,679	8.9	456,604	5.7	1,490,344	5.9
Three or more conditions	5,933	5.5	240,117	3.0	772,142	3.0
Not stated	10,319	9.5	654,833	8.1	2,066,251	8.1

Note: Selected long-term health conditions include arthritis, asthma, cancer (including remission), dementia (including Alzheimer's), diabetes (excluding gestational diabetes), heart disease (including heart attack or angina), kidney disease, lung condition (including COPD or emphysema), mental health condition (including depression or anxiety) and stroke. Other long-term health conditions are not included in this count.

More information on [Count of selected long-term health conditions \(CLTHP\)](#)

Table based on place of usual residence

Australian Defence Force service

Australian Defence Force Service People aged 15 years and over	Shoalhaven	%	New South Wales	%	Australia	%
Currently serving	1,572	1.7	24,512	0.4	84,865	0.4
Previously served (and not currently serving)	4,129	4.5	127,657	1.9	496,276	2.4
Has never served	79,039	86.7	6,050,636	91.6	18,954,152	91.2
Not stated	6,438	7.1	399,351	6.0	1,249,493	6.0

Note: Australian Defence Force Service includes service in the Regular and/or Reserves service. Includes Royal Australian Navy, Australian Army, Royal Australian Air Force, Second Australian Imperial Force, National Service and NORFORCE. Excludes service for non-Australian defence forces.

More information on [Australian Defence Force service \(ADFP\)](#)

Table based on place of usual residence

Families

Family composition <i>All families</i>	Shoalhaven	%	New South Wales	%	Australia	%
Couple family without children	15,027	50.0	809,586	37.9	2,608,834	38.8
Couple family with children	9,758	32.5	954,588	44.7	2,944,140	43.7
One parent family	4,877	16.2	337,729	15.8	1,068,268	15.9
Other family	383	1.3	34,061	1.6	108,941	1.6

More information on [Family composition \(FMCF\)](#).

Table based on place of enumeration

Single (or lone) parents <i>Proportion of the total single (or lone) parent population</i>	Shoalhaven	%	New South Wales	%	Australia	%
Male	N/A	21.4	N/A	19.0	N/A	19.6
Female	N/A	78.7	N/A	81.0	N/A	80.4

More information on [Sex of lone parent \(SLPP\)](#).

Table based on place of enumeration

Employment status of couple families <i>Couple families where parents or partners were aged 15 years and over</i>	Shoalhaven	%	New South Wales	%	Australia	%
Both employed, worked full-time	3,476	14.0	382,754	21.7	1,234,626	22.2
Both employed, worked part-time	1,413	5.7	83,120	4.7	264,182	4.8
One employed full-time, one part-time	4,448	17.9	320,350	18.2	1,155,042	20.8
One employed full-time, other not working	2,267	9.1	217,325	12.3	692,497	12.5
One employed part-time, other not working	1,766	7.1	111,828	6.3	339,960	6.1
Both not working	8,778	35.4	403,262	22.9	1,163,744	21.0
Other	1,583	6.4	181,101	10.3	449,640	8.1
Labour force status not stated	1,055	4.3	64,433	3.7	253,286	4.6

Note: The ABS Labour Force Survey provides the official estimates of Australia's labour force. More information is provided in [Comparing 2021 Census and Labour Force Survey](#).

More information on [Labour force status of parents/partners in families \(LFSF\)](#).

Table based on place of enumeration

Dwellings

Dwelling count						
<i>Private dwellings (excl. visitor only and other non-classifiable households)</i>	Shoalhaven	%	New South Wales	%	Australia	%
Occupied private dwellings	42,667	76.9	2,900,468	90.6	9,275,217	89.9
Unoccupied private dwellings	12,794	23.1	299,524	9.4	1,043,776	10.1

More information on [Dwelling type \(DWTD\)](#).

Table based on place of enumeration

Dwelling structure						
<i>Occupied private dwellings (excl. visitor only and other non-classifiable households)</i>	Shoalhaven	%	New South Wales	%	Australia	%
Separate house	37,225	87.2	1,902,734	65.6	6,710,582	72.3
Semi-detached, row or terrace house, townhouse etc	3,469	8.1	340,582	11.7	1,168,860	12.6
Flat or apartment	865	2.0	630,030	21.7	1,319,095	14.2
Other dwelling	852	2.0	19,374	0.7	54,711	0.6

More information on [Dwelling structure \(STRD\)](#).

Table based on place of enumeration

Number of bedrooms						
<i>Occupied private dwellings (excl. visitor only and other non-classifiable households)</i>	Shoalhaven	%	New South Wales	%	Australia	%
None (includes studio apartments or bedsitters)	137	0.3	21,051	0.7	44,864	0.5
1 bedroom	1,324	3.1	190,792	6.6	488,681	5.3
2 bedrooms	6,843	16.0	657,578	22.7	1,768,530	19.1
3 bedrooms	17,542	41.1	1,006,121	34.7	3,617,803	39.0
4 or more bedrooms	16,132	37.8	983,314	33.9	3,224,351	34.8
Number of bedrooms not stated	696	1.6	41,623	1.4	130,989	1.4
Average number of bedrooms per dwelling	3.2	N/A	3.1	N/A	3.1	N/A
Average number of people per household	2.3	N/A	2.6	N/A	2.5	N/A

More information on [Number of bedrooms in a private dwelling \(BEDD\)](#), [Number of persons usually resident in dwelling \(NPRD\)](#).

Table based on place of enumeration

Number of registered motor vehicles						
<i>Occupied private dwellings (excl. visitor only and other non-classifiable households)</i>	Shoalhaven	%	New South Wales	%	Australia	%
None	1,863	4.4	262,031	9.0	673,969	7.3
1 motor vehicle	16,055	37.6	1,096,761	37.8	3,353,737	36.2
2 motor vehicles	16,005	37.5	989,258	34.1	3,366,738	36.3
3 or more vehicles	8,045	18.9	508,694	17.5	1,745,924	18.8
Number of motor vehicles not stated	703	1.6	43,732	1.5	134,848	1.5

Note: Motor vehicles excludes motorbikes, motor scooters and heavy motor vehicles.

More information on [Number of registered motor vehicles \(VEHD\)](#).

Table based on place of enumeration

Housing

Household composition							
Occupied private dwellings (excl. visitor only and other non-classifiable households)	Shoalhaven	%	New South Wales	%	Australia	%	
Family households	29,348	68.8	2,065,107	71.2	6,542,648	70.5	
Single (or lone) person households	12,150	28.5	723,716	25.0	2,370,742	25.6	
Group households	1,169	2.7	111,646	3.8	361,822	3.9	
More information on Household composition (HHCD)							
Table based on place of enumeration							
Tenure type							
Occupied private dwellings (excl. visitor only and other non-classifiable households)	Shoalhaven	%	New South Wales	%	Australia	%	
Owned outright	19,052	44.7	914,537	31.5	2,872,331	31.0	
Owned with a mortgage (a)	11,551	27.1	942,804	32.5	3,242,449	35.0	
Rented (b)	10,335	24.2	944,585	32.6	2,842,378	30.6	
Other tenure type (c)	985	2.3	55,931	1.9	181,518	2.0	
Tenure type not stated	744	1.7	42,613	1.5	136,538	1.5	
(a) Includes dwellings purchased under a shared equity scheme.							
(b) Excludes dwellings being occupied rent-free, this is not comparable to 2016 QuickStats data.							
(c) Comprises dwellings occupied rent free, occupied under a life tenure scheme and other tenure type.							
More information on Tenure type (TEND)							
Table based on place of enumeration							
Household income							
Occupied private dwellings (excl. visitor only and other non-classifiable households)	Shoalhaven	%	New South Wales	%	Australia	%	
Less than \$650 total household weekly income (a)	N/A	22.7	N/A	16.3	N/A	16.5	
More than \$3,000 total household weekly income (a)	N/A	13.0	N/A	26.9	N/A	24.3	
(a) Percentages (%) exclude dwellings with 'Partial income stated' or 'All incomes not stated.'							
More information on Total household income (weekly) (HIND)							
Table based on place of enumeration							
Rent weekly payments							
Occupied private dwellings (excl. visitor only and other non-classifiable households) being rented	Shoalhaven	%	New South Wales	%	Australia	%	
Median rent (a)	350	N/A	420	N/A	375	N/A	
Renter households where rent payments are less than or equal to 30% of household income (b)	5,030	48.7	529,731	56.1	1,667,080	58.7	
Renter households with rent payments greater than 30% of household income (b)	4,375	42.3	335,404	35.5	915,317	32.2	
Unable to determine (c)	928	9.0	79,448	8.4	259,992	9.1	
(a) Median rent calculations exclude dwellings being occupied rent-free, this is not comparable to 2016 QuickStats data.							
(b) This is not comparable with historical QuickStats, as applicable households included in this calculation have changed. For details on how Household income is derived please refer to RAID .							
(c) Unable to determine includes those households in which income and/or housing costs were not, or were only partially stated, by persons in the household.							
More information on Rent payments (weekly) (RNTD) , Rent affordability indicator (RAID)							
Table based on place of enumeration							
Mortgage monthly repayments							
Occupied private dwellings (excl. visitor only and other non-classifiable households) owned with a mortgage or purchased under a shared equity scheme	Shoalhaven	%	New South Wales	%	Australia	%	
Median mortgage repayments	1,733	N/A	2,167	N/A	1,863	N/A	
Owner with mortgage households where mortgage repayments are less than or equal to 30% of household income (a)	8,299	71.8	677,486	71.9	2,398,902	74.0	
Owner with mortgage households with mortgage repayments greater than 30% of household income (a)	1,876	16.2	163,060	17.3	468,817	14.5	
Unable to determine (b)	1,377	11.9	102,255	10.8	374,734	11.6	

(a) This is not comparable with historical QuickStats, as applicable households included in this calculation have changed. For details on how Household income is derived please refer to [MAID](#).

(b) Unable to determine includes those households in which income and/or housing costs were not, or were only partially stated, by persons in the household.

More information on [Mortgage repayments \(monthly\) \(MRED\)](#), [Mortgage affordability indicator \(MAID\)](#).

Table based on place of enumeration

Aboriginal and/or Torres Strait Islander peoples

People characteristics						
<i>Aboriginal and/or Torres Strait Islander people</i>	Shoalhaven	%	New South Wales	%	Australia	%
Male	3,612	51.1	138,179	49.7	403,709	49.7
Female	3,457	48.9	139,862	50.3	409,025	50.3
Median age	24	N/A	23	N/A	24	N/A

More information on [Sex \(SEXP\)](#), [Indigenous status \(INGP\)](#)

Table based on place of usual residence

Dwelling characteristics						
<i>Occupied private dwellings (excl. visitor only and other non-classifiable households) where at least one person was Aboriginal and/or Torres Strait Islander</i>	Shoalhaven	%	New South Wales	%	Australia	%
Average number of people per household	3	N/A	3.1	N/A	3.1	N/A
Average number of people per bedroom	0.9	N/A	1	N/A	1	N/A
Median weekly household income (a)	1,332	N/A	1,558	N/A	1,507	N/A

(a) Excludes households where at least one person aged 15 years and over in the household did not state their income.

More information on [Number of bedrooms in a private dwelling \(BEDD\)](#), [Household composition \(HHCD\)](#), [Total household income \(HIND\)](#), [Indigenous household indicator \(INGDWTID\)](#)

Table based on place of enumeration

Mortgage and rent						
<i>Occupied private dwellings (excl. visitor only and other non-classifiable households) where at least one person was Aboriginal and/or Torres Strait Islander</i>	Shoalhaven	%	New South Wales	%	Australia	%
Median weekly rent (a)	340	N/A	340	N/A	300	N/A
Median monthly mortgage repayments	1,733	N/A	1,755	N/A	1,721	N/A

(a) Median rent calculations exclude dwellings being occupied rent-free, this is not comparable to 2016 QuickStats data.

More information on [Rent weekly payments \(RNTD\)](#), [Mortgage monthly repayments \(MRED\)](#), [Indigenous household indicator \(INGDWTID\)](#)

Table based on place of enumeration

Please note that there are small random adjustments made to all cell values to protect the confidentiality of data. These adjustments may cause the sum of rows or columns to differ by small amounts from table totals.