

© Russell Corporate Advisory 2022. All rights reserved. Except as expressly permitted by the Copyright Act 1968, no part of this document may be reproduced or copied in any form or by any means without the prior written permission of Russell Corporate Advisory.



**MILTON ULLADULLA EX-SERVOS CLUB LIMITED LIQC300231674**

**CLASS 1 LOCAL IMPACT ASSESSMENT**

**GAMING MACHINE THRESHOLD INCREASE**

**212-222 Princes Highway Ulladulla NSW 2539**

**19 December 2022**

Russell Corporate Advisory Services Pty Limited  
ABN 87 111 049 999  
Liability limited by a scheme approved under  
Professional Standards Legislation



G:\Club Clients L-Z\Milton Ulladulla Ex Services\2022 LIA\LIA cover page.doc

Suite 904, Level 9  
53 Walker Street  
North Sydney NSW 2060  
T 61 2 9957 6700  
W [www.russellcorporate.com.au](http://www.russellcorporate.com.au)

## **TABLE OF CONTENTS**

<b>1. EXECUTIVE SUMMARY .....</b>	<b>2</b>
<b>2. VENUE, LOCAL AREA &amp; COMMUNITY .....</b>	<b>2</b>
2.1 Local Area Maps .....	3
2.2 Local Demographic .....	5
2.3 Local Gaming Data .....	7
2.4 Club Venue .....	9
<b>3. GAMBLING HARM MINIMISATION AND RESPONSIBLE GAMBLING MEASURES .</b>	<b>11</b>
3.1 Suitably Qualified Staff .....	11
3.2 Club Gaming Area .....	12
3.3 Responsible Gambling Measures .....	12
3.3.1 Mandatory Responsible Gambling Measures .....	12
3.3.2 Responsible Gambling Measures Above and Beyond .....	15
<b>4. POSITIVE CONTRIBUTION .....</b>	<b>18</b>
<b>5. NOTIFY COMMUNITY .....</b>	<b>20</b>
<b>6. CONCLUSION .....</b>	<b>20</b>
<b>7. ANNEXURE A – Demography .....</b>	<b>21</b>

## 1. EXECUTIVE SUMMARY

Contemporaneous with the submission of this Class 1 Local Impact Assessment, MILTON ULLADULLA EX-SERVOS CLUB LIMITED ABN 90 000 858 364 (**Applicant**) has submitted prescribed form “GML000 Gaming machine threshold increase where LIA required”

Milton Ulladulla Ex-Servos Club Limited LIQC300231674 (**Club**) is located at 212-222 Princes Hwy ULLADULLA NSW 2539 within the Shoalhaven Local Government Area (**LGA**) and within the Ulladulla Statistical Area Level 2 (**SA2**) and within the Illawarra & Southern NSW GambleAware region.

The SA2 of Ulladulla is classified as a Band 2 for the purposes of section 33 *Gaming Machines Act (NSW) 2001 (Act)*. The Club has 114 Gaming Machine Entitlements (**GME**) currently and now seeks a low range increase of 20 to take its Gaming Machine Threshold (**GMT**) of 114 to 134.

The Club has had regard for, inter alia, the Authority’s “*Guideline 16 - Late-night gaming applications*” in preparing its Gaming Plan of Management and has devised a comprehensive Gaming Plan of Management (**GPOM**) that includes responsible gambling measures that exceed those required by legislation.

In the event that the GMT increase is approved, the Club undertakes to make a sizeable contribution to the Responsible Gambling Fund in accordance with the Class 1 Local Impact Assessment process guidelines.

## 2. VENUE, LOCAL AREA & COMMUNITY

The Club is located at 212-220 Princes Highway, Ulladulla, NSW 2539, being on the eastern side of the Princes Highway and approximately 1km south of the town centre of Ulladulla. Ulladulla is a coastal town approximately 230 kilometres south of Sydney and is south of Nowra and north of Batemans Bay.

For reference, the SA2 of Ulladulla encompasses an area that is approximately 14km from north to south and 6km wide and is comprised of the following suburbs:-

- Ulladulla
- Milton
- Narrawallee
- Mollymook Beach
- Mollymook
- Kings Point
- Burrill Lake
- Dolphin Point

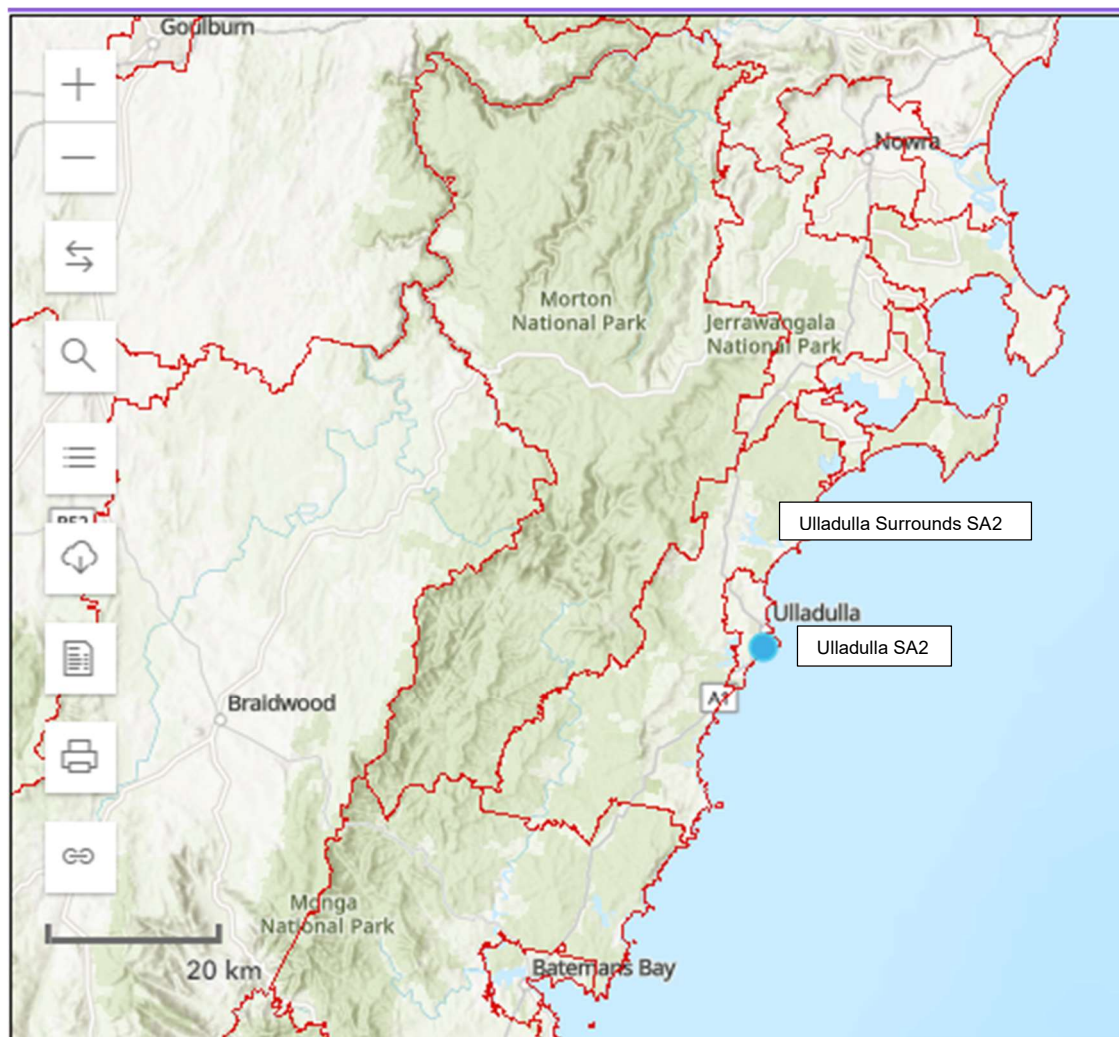
The SA2 of Ulladulla is surrounded by the Ulladulla Region SA2, being the only two SA2 areas within 5km of the Club.

To the north of the Club is mostly low-density residential housing and to the east is scrubland leading down to a non-patrolled beach. On the western side of the Princes Highway across from the Club is a designated light industrial area.

The Ulladulla area is mostly comprised of residents however, being a coastal area, the area attracts tourists during the summer months. Ulladulla and nearby Mollymook appeal to retirees and those seeking a sea change.

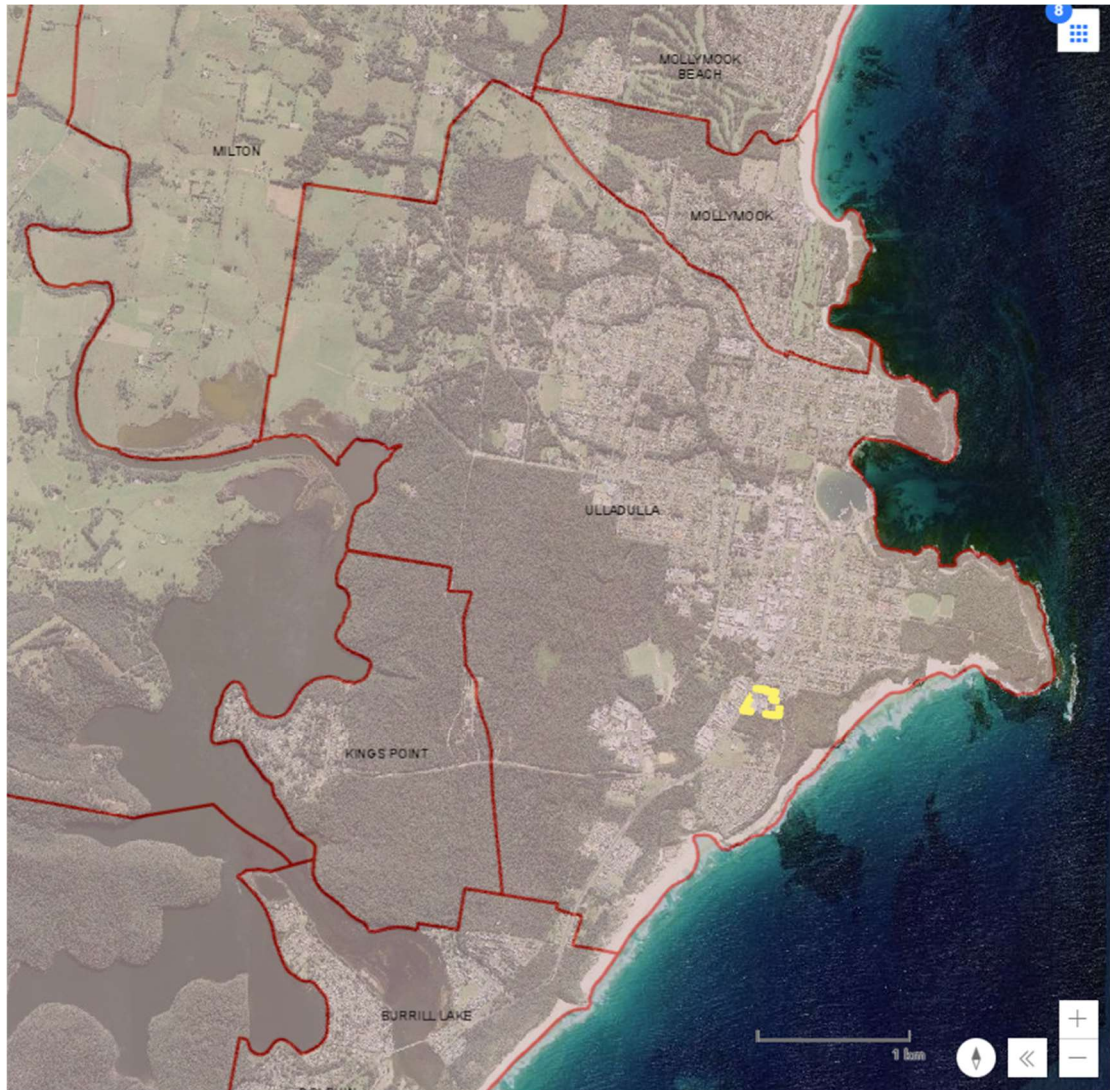
## 2.1 Local Area Maps

Below is a map depicting surrounding 2021 Level 2 Statistical Areas, with the Club marked in the centre with a blue dot and is situated approximately halfway between Nowra and Batemans Bay.



Source: Australian Bureau of Statistics

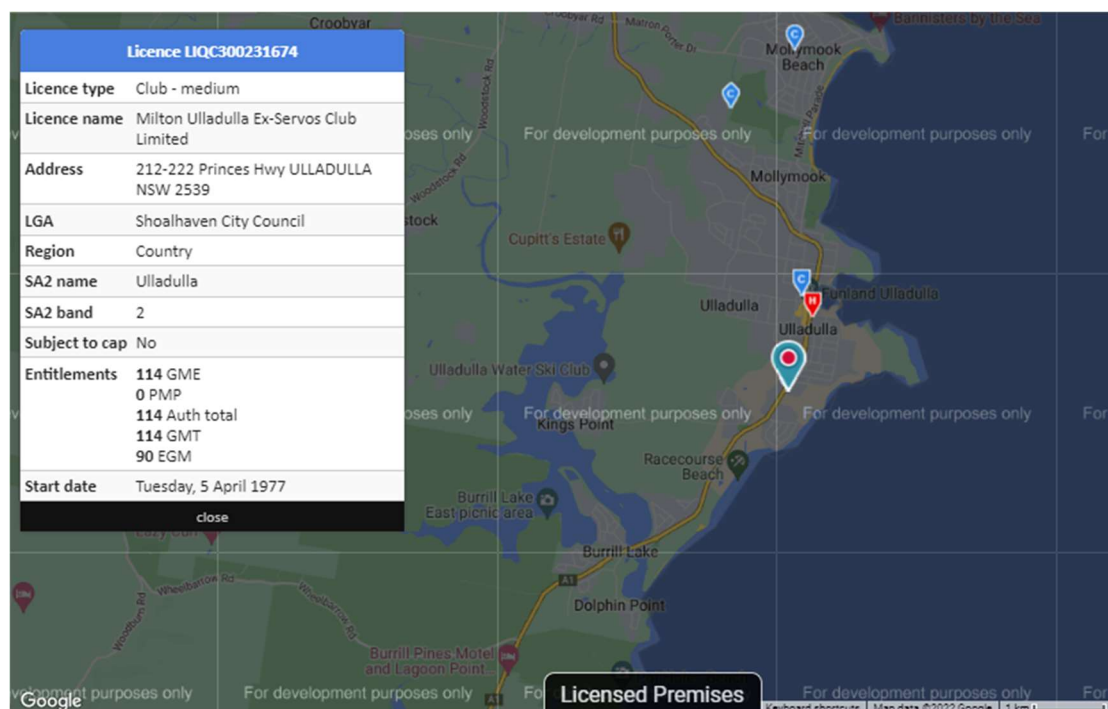
The below map depicts the suburb of Ulladulla and surrounding suburbs and illustrates the extent of undeveloped bush and farmland in the area. The Club property is marked with a yellow boundary.



Source : NSW Planning Portal



The below map was obtained from the website of Liquor & Gaming NSW (LGNSW) on 11 November 2022 and indicates hotel and registered club gaming venues within a radius of approximately 5km of the Club as at 2 March 2022. The Club is in the centre of the map and indicated by the large blue and red pin drop.



Source Liquor & Gaming NSW

The above map indicates that there are few licensed premises in the area that offer gaming machines.

## 2.2 Local Demographic

The Club has approximately 16,500 members of which approximately 44% reside within the Ulladulla SA2. We regard the Club's Local Community as being those that reside, work in, or frequent the Ulladulla SA2.

The 2021 census population of Ulladulla SA2 was 17,026. The reported population of the suburb of Ulladulla was 7,262 and for the Shoalhaven LGA was 108,531.

Attached as **Annexure A** is a "QuickStats" summary of the Ulladulla SA2 2021 census data as prepared by the Australian Bureau of Statistics and which includes demographic data as requested in the Class 1 Local Impact Assessment process guidelines issued by LGNSW.

Below is a demographic snapshot of the Ulladulla SA2 comparing key statistical data with the state of New South Wales and Australia.

From the below and attached data we conclude that the population of Ulladulla SA2, with a median age of 52 years and 47.1% aged 55 years and above, is much older when compared to NSW and the Nation.

The rate of unemployment is slightly lower than the State and Nation and, as expected with an older population, the percentage of the population aged 15 years or over not participating in the workforce and the rate of part-time workers are significantly higher than the respective rates for NSW and Australia. These statistics support the above observation that the local area is popular with retirees and semi-retirees.

### Demographic Snapshot

2021 census (2016 SEIFA)	Ulladulla (SA2)	NSW	Australia
Median age	52	39	38
Female %	51.7%	50.6%	50.7%
Male %	48.3%	49.4%	49.3%
Indigenous	4.1%	3.4%	3.2%
18+ Population %	81%	78%	78%
55+ Population %	47.1%	29.6%	29.1%
SEIFA (IRSD) Score (Decile)	969 (4)	1001	1001.9
SEIFA (IRSAD) Score (Decile)	941 (3)	1011	1003.1
Unemployed (aged 15+ in labour force)	4.2%	4.9%	5.1%
Not in labour force (aged 15+)	47.1%	35.5%	33.1%
Worked part-time (aged 15+)	42.9%	29.7%	31.2%

Source: Australian Bureau of Statistics / [profileid.com.au](http://profileid.com.au)

Ulladulla SA2 residents predominantly speak the English language at home (90%) and this rate is much higher when compared to NSW (67.6%) and Australia (72%) and reflects the predominant place of birth of Australia (80.9%) for Ulladulla SA2 residents (NSW 65.4%; Australia 66.9%).

The NSW Government has projected that the resident population of the Shoalhaven LGA and Ulladulla SA2 areas are to grow at a much faster pace than for NSW as a whole.

As indicated by the below table recently extracted from the NSW Planning Portal, the population of the Ulladulla SA2 is forecast to grow by 42% over the next two decades (Shoalhaven LGA +34%; NSW +21%).

Region	2021	2041	Change	Annual %
NSW	8,166,757	9,872,934	1,706,176	⬆️ 0.95
✖️  SHOALHAVEN	108,612	145,527	36,914	⬆️ 1.47
✖️  Ulladulla	17,119	24,280	7,161	⬆️ 1.76

Source: NSW Planning Portal

## 2.3 Local Gaming Data

With reference to the LGNSW Licensed Premises list as at 6 November 2022, the total Gaming Machine Threshold for the Shoalhaven LGA was 1,678 and for Ulladulla SA2 was 383.

The below table indicates that the addition of 20 gaming machines to the Local Community will have a marginal impact and especially so as the population grows:-

### Gaming Machines Per Capita

EGM Density (per capita)	Ulladulla (SA2)	Shoalhaven LGA
Population (2021 census)	17,026	108,531
Population (2041 forecast)	24,280	145,527
% Growth (forecast to 2041)	42%	34%
# EGM GMT (current)	383	1,678
GMT increase (as contemplated herein)	20 (+5.2%)	20 (+1.2%)
# EGM GMT (assumed)	403	1,698
EGM per 1,000 pop. (current 2021)	22	15
EGM per 1,000 pop. (assumed 2021)	24	16
EGM per 1,000 pop. (assumed 2041)	17	12

Source: LGNSW, ABS, NSW Planning Portal

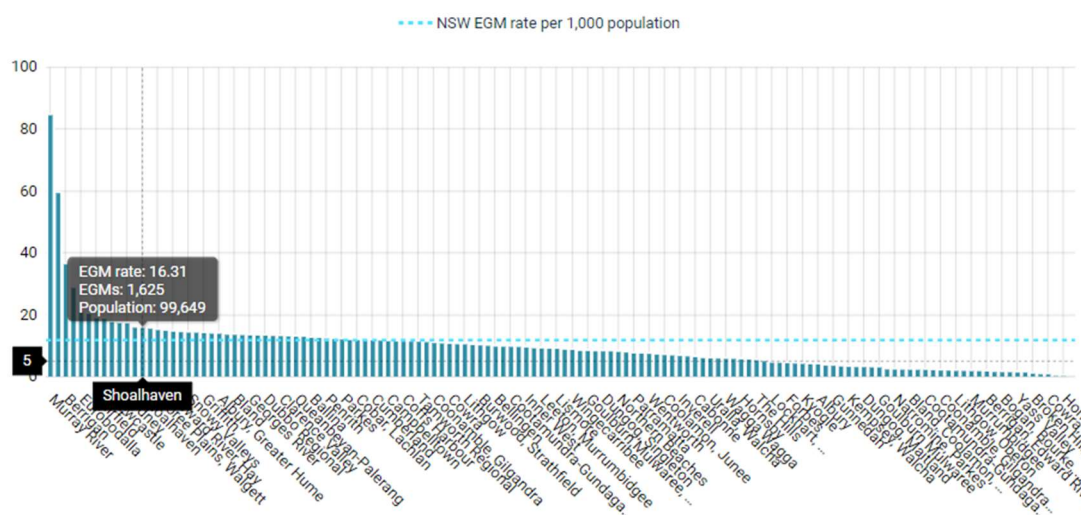
For the Ulladulla SA2, LGNSW reported total annual gaming machine net profit in the amount of \$15,442,534 for 2019 (for the year ended 31 May 2019 for clubs and year ended 30 June 2019 for hotels), being the most current SA2 gaming data publicly available. LGNSW also reported therein that the 2019 average annual net profit per gaming machine entitlement or permit in the Ulladulla SA2 was \$42,541.



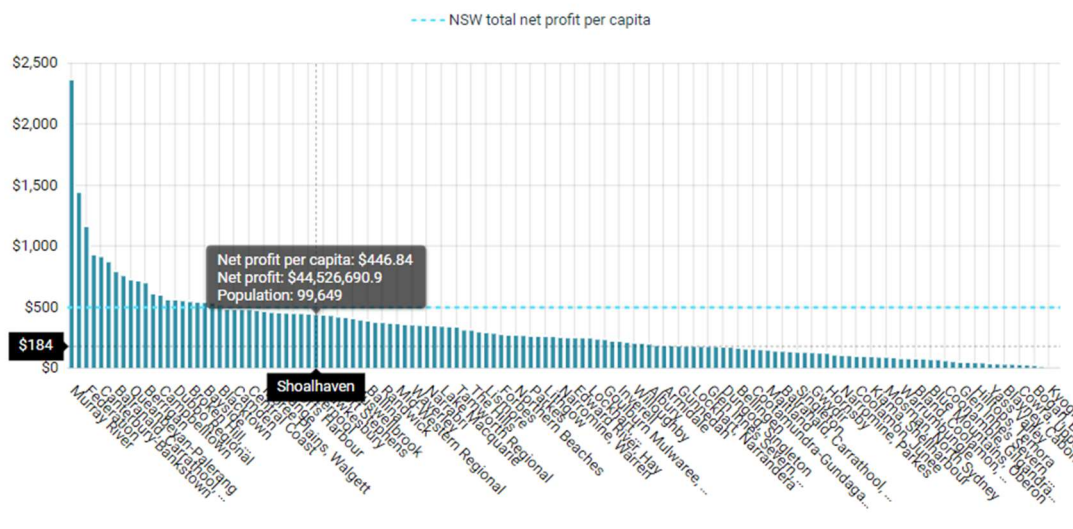
For the Shoalhaven LGA, LGNSW reported total annual gaming machine net profit for clubs in the amount of \$61,522,727 for the year ended 31 May 2022 and from which we calculate the average annual net profit per club gaming machine entitlement in the Shoalhaven LGA was \$42,903, based on total registered club Gaming Machine Entitlements in the LGA as at 1 June 2022 of 1,434.

The below graphs relating to the Shoalhaven LGA gaming density and profitability for the 6-month period ended 31 December 2020 were extracted from LGNSW. These graphs indicate that whilst EGM density may have been higher than many other areas in NSW, EGM profitability per capita was not commensurate with density and was lower and in the mid-range for the state at \$446 per capita.

Local Government Area total EGM rate per 1,000 population from highest to lowest - June 2020 - December 2020 in **New South Wales**:



Local Government Area total net profit per capita from highest to lowest - June 2020 - December 2020 in **New South Wales**:



Source: LGNSW LiveData

For the Shoalhaven LGA, for pubs and clubs in 2022, LGNSW reported total annual gaming machine net profit in the amount of \$75,530,218 (being for the year ended 31 May 2022 for clubs and year ended 30 June 2022 for hotels) and from which we calculate the average annual net profit per gaming machine entitlement or permit in the Shoalhaven LGA was \$45,555 based on total Gaming Machine Entitlements in the LGA as at 1 June 2022 of 1,658.

For the year ended 30 November 2022 the Club reported total gaming machine net profit in the amount of \$8,244,427 and so the Club's average annual net profit per gaming machine entitlement for that period was \$72,320.

The above gaming machine figures include Goods and Services Tax imposed at a rate of 10%.

## **2.4 Club Venue**

The Club is operated by the Applicant, MILTON ULLADULLA EX-SERVOS CLUB LIMITED ABN 90 000 858 364, a company limited by member guarantee and is governed by its Board of Directors, as appointed by members.

In accordance with the Applicant's constitution, profits are not distributed to its members and so are invested in the Club and the Local Community.

The Club's venue and staff of approximately 100 employees are managed by its Secretary Manager and an Operations Manager.

The Club is open 7 days a week and its current trading hours are from 9:30am Monday to Friday and from 10:00am on weekends and advertises as open until 2:00am each day.

The Club's mandatory gaming shutdown hours are from 3:00am to 9:00am on weekdays and from 4:00am until 10:00am on weekends and public holidays.

The Club provides the following facilities and services to members and guests:-

- War Memorial
- Meeting/Function room
- Restaurant
- Two bars (main bar and restaurant)
- Café
- TAB lounge, gaming area and terrace area (restricted area)
- Live entertainment
- Community Raffles for the local Junior Rugby League Club and Soccer club

- Club Keno
- Bottle Shop
- “Earn & Return” recycling
- Car parking (approx. 300 spaces)
- Local Ride Home service

The Club enforces a strict dress code.

The Club provides for sub-clubs or sponsors local interest groups that cater to member interests as follows:

- RSL sub-Branch
- Euchre Club
- Mollymook Outriggers Canoe Club
- Milton Ulladulla Football Club
- Milton Ulladulla Junior Rugby League Club
- Ulladulla Marine Rescue
- Makai Paddlers
- Creative Writing Group
- Social Golf Club

The Club is within the Level 2 Statistical Area of Ulladulla which is a designated Band 2 for the purposes of the *Gaming Machines Act (NSW) 2001* (**Act**).

The Club has a Gaming Machine Threshold (**GMT**) of 114 and the Applicant now seeks to increase its GMT by 20, to 134, being a low range threshold increase for the purposes of section 35 of the *Gaming Machines Act (NSW) 2001* as prescribed by clause 29 of the *Gaming Machines Regulation (NSW) 2019* (**Regulation**).

The Club premises were comprised of two separate structures, one of which is no longer in use and is soon to be demolished. The remaining premises are comprised of approximately 1,770 square metres and includes a separate gaming/TAB lounge area of approximately 750 square metres of which approximately 175 square metres is outdoors.

The gaming area is comprised of seating areas, gaming machines and a TAB lounge area and dedicated toilet amenities that are separate to the non-restricted main Club lounge, function room and dining areas which contain the main Club toilet amenities.

The gaming area is separate to the main Club lounge and dining areas and sits within a restricted lounge area of the Club.

### **3. GAMBLING HARM MINIMISATION AND RESPONSIBLE GAMBLING MEASURES**

The Club has implemented a Gaming Plan of Management (**GPOM**) which outlines the Club's responsible gambling measures and approach to gambling harm minimisation. The GPOM includes such measures as required to comply with the Act and Regulation. The GPOM also incorporates measures that go "above and beyond" and exceed those required by current gaming machine legislation.

In devising its GPOM, the Applicant has had regard to:-

- the Club's desire to promote a safe and responsible gambling environment for all patrons and staff;
- risk profile of the Club;
- relevant legislation and regulation;
- operational best practice;
- social responsibility;
- floor plan and design of the Club and surrounds;
- conditions imposed by Local Council, NSW Independent Liquor & Gaming Authority, Liquor & Gaming NSW or any other authority;
- guidance notes and fact sheets as issued by NSW Independent Liquor & Gaming Authority, Liquor & Gaming NSW, GambleAware and ClubsNSW/ClubSAFE.

#### **3.1 Suitably Qualified Staff**

All staff supervising or servicing the gaming area at the Club have current NSW Responsible Conduct of Gambling (**RCG**) qualifications and therefore have completed an approved RCG course.

Gaming staff are required to undertake RCG refresher courses at least every 5 years to maintain RCG competency. The Club maintains a register and monitors impending expiry or refresher training due dates to ensure that only staff with current RCG competency cards are involved in the operation of gaming machines.

The Secretary Manager and Operations Manager undertake an Advanced RCG training course (as approved, if applicable) or otherwise undertake ClubSAFE Staff-Customer Relations Advanced Course or similar at least once every 3 years.

A copy of each relevant staff member's RCG competency card or interim RCG certificate is maintained on the employee register and can be made available for inspection as required in either physical or digital form.

All gaming staff will be directed to comply with the GPOM and will be adequately trained as to its application and encouraged to seek clarification or further direction as required.

### **3.2 Club Gaming Area**

The Club has a separate gaming lounge area wherein all gaming machines are located and minors are not permitted to enter (except in the very limited circumstances as provided for under legislation). The gaming area is located within the designated restricted area.

Patrons are not compelled to pass through the gaming area when entering or exiting the Club or to gain access to the dining area or amenities.

Gaming machines are not visible to the public and are screened from view from the road.

The gaming area is at all times supervised by suitably qualified staff by physical presence or electronic means.

The restricted area of the Club contains toilet amenities, one for each gender, all of which are separate to the toilet amenities for the main lounge and dining areas of the Club and which do *not* require patrons to exit the Club to access.

The gaming area is *not* directly accessible from the street and provides good access within the gaming area to allow ingress from and egress to other areas of the Club.

The gaming area contains only approved electronic gaming machines connected to the Centralised Monitoring System. The Club currently has 96 gaming machines in operation and this amount has fluctuated in recent times to allow for social distancing.

The gaming area contains all mandatory gaming machine signage and does not contain an ATM or an EFTPOS cash withdrawal facility. ATMs are in view of staff and are not visible from the gaming machine area.

The gaming area has adjacent lounge and dining areas to provide respite to gaming patrons. The gaming area benefits from natural light during the day.

### **3.3 Responsible Gambling Measures**

The Club's Gaming Plan of Management (GPOM) includes responsible gambling and harm minimisation measures as detailed below.

#### **3.3.1 Mandatory Responsible Gambling Measures**

The GPOM incorporates mandatory RCG measures as required under the Act including, in summary, the following as per specified sections of the Act:-



- s43: The Club does not publish any gaming machine advertising outside of the Club.
- s44: The Club does not display any gambling related signage that could be seen from outside the venue.
- s44A: The Club's gaming machines cannot be seen by the public.
- s45: The Club offers a member rewards scheme and, from time to time, promotional prizes with a value of less than \$1,000, but such rewards or promotional prizes are not redeemable for cash. Members are advised that player activity statements are available and are provided on request. Members can opt out of the Club's reward scheme at any time.
- s45A/B: The Club only provides or discloses player activity statements or member reward card activity to the person to whom the information relates or to anyone lawfully entitled to that information.
- s46: The Club subscribes to ClubsNSW and so has access to the ClubsNSW multi-venue self-exclusion scheme and gambling counselling and treatment services and the availability of same is advertised within the Club and counselling details made available on request and to participants when entering into a self-exclusion agreement at the Club.
- s47: The Club will, at all times, exercise responsible conduct in relation to gaming machines and, in accordance with the Regulation, has incorporated the following mandatory measures in its GPOM:
- a) as noted above, the Club offers a member rewards scheme and, from time to time, promotional prizes with a value of less than \$1,000, but such rewards or promotional prizes are not redeemable for cash.
  - b) the standards to be observed by the Club and staff for responsible conduct in relation to approved gaming machines and staff training, staff meetings, staff communication and processes around same are detailed in the Club's GPOM.
  - c) as noted above, all staff supervising or servicing the gaming area at the Club have current NSW Responsible Conduct of Gambling (**RCG**) qualifications.
  - d) the offer or supply of free or discounted liquor or free gaming machine credits as an inducement to play or to continue playing gaming machines is prohibited.
  - e) comply with all mandatory gaming signage and player information requirements and placement within the gaming area and elsewhere e.g. no minors, self-exclusion, counselling services, dangers of gambling, chances of winning etc. Player information brochures in English language are displayed and

made freely available to players. Information brochures in languages other than English, as issued by LGNSW, are made available on request as soon as possible. Staff are trained and instructed to ensure that mandatory signage and player information requirements are adhered to.

- f) mandatory notices with respect to the availability of problem gambling counselling services will be displayed as prescribed by the Act and elsewhere.
- g) cash dispensing facilities (e.g. automatic teller machine or EFTPOS cash withdrawal) are not available within the gaming area.
- h) details of gaming machine prize winners are not advertised and the Club, if requested, withholds the identity of any major prize-winners.

s47A: The Club does not cash any cheques and so will not accept the transfer of any cheque.

s47B: Any gaming machine prize winnings over \$5,000, or the entire prize if requested by the prize winner, will be paid by:

- a) issuing a cheque which will be crossed and made payable to the prize winner and marked "*Prize winning cheque – cashing rules apply*" or by
- b) electronic funds transfer (EFT) to a nominated account.

s47C: Any cash dispensing facilities (e.g. ATM, EFTPOS) at the Club are not capable of providing cash from a credit card account. Further, no cash or credit will be advanced to any patron.

s48: The Club abides by the ClubsNSW Code of Practice which requires, inter alia, the responsible provision of gambling services. The Club also complies with ClubsNSW's ClubSAFE Responsible Gambling Management Manual as endorsed by the NSW Government;

s49: The Club ensures that patrons have access to the ClubsNSW Multi-Venue Self-Exclusion Scheme at all times the gaming machines are operating and advertises the availability of the scheme and informs patrons as to its operation and:-

- a) does not refuse a patron to participate in a self-exclusion arrangement,
- b) provides a self-excluded patron with a written and signed undertaking that they will not allow them to gamble at the Club for a specified period,

- c) gives a patron the opportunity to obtain independent legal or other professional advice about the intention of the agreement before it commences,
- d) gives a self-excluded patron written details about the gambling-related counselling service available;
- e) ensures that employees at the Club can identify self-excluded patrons by a recent photograph or otherwise,
- f) prevents a patron seeking to withdraw from the self-exclusion scheme within six months of commencement.

s50/52: Minors are prohibited in the restricted area, which includes the gaming area, and all relevant staff and security personnel will be trained to prevent minors from entering the restricted area and to request identification from any patron in the restricted area reasonably suspected of being under the age of 18 years. Any minors found to be improperly in the restricted area will be requested to move to the non-restricted area.

The Applicant undertakes to comply with all legislation that governs the operation of gaming machines and the responsible conduct of gambling.

The Applicant also undertakes to meet its obligations under *The Anti-Money Laundering and Counter-Terrorism Financing Act 2006*.

### **3.3.2 Responsible Gambling Measures Above and Beyond**

In addition to the mandatory measures noted above, the Applicant, after assessing the risk profile of the venue, has implemented further operational measures to reduce the risk of gambling harm and to deter problem gamblers from the gaming area of the Club.

The Club has implemented a Gaming Plan of Management (GPOM) which incorporates ClubsNSW's ClubSAFE Responsible Gambling Management Manual.

The Club's strong presence of staff in its gaming area enables the prompt detection of problem gambling or potential gambling harm and, to address any such incidents, the Club's GPOM provides clear guidance to staff and is the foundation of the Club's culture of responsible gambling.

The Club is a member of ClubsNSW, the peak representational body for the NSW registered club industry. ClubsNSW offers members access to ClubSAFE, a leading responsible gambling and compliance program.

The Club's Gaming Plan of Management also provides as follows:-

1. At least once every three years, the Secretary Manager and Operations Manager are required to undertake training in Advanced Responsible Conduct of Gambling or ClubSAFE Staff-Customer Relations Advanced Course or similar and so are well trained to recognise and address signs of gambling harm or potential gambling harm;

2. Duty Supervisors are provided with annual refresher training on the ClubSAFE MVSE process.
3. There is always at least one adequately trained person on the premises when the Club is open for trade and gaming machines are operating that has been directed to specifically monitor or address signs of problem gambling or potential gambling harm or to implement an MVSE or to direct patrons, when required, to suitable problem gambling counselling services.
4. At all times that gaming machines are in operation a designated Responsible Gambling Officer, being a dedicated staff member who holds a current RCG certificate, assumes the following duties:-
  - a) maintain the gambling incident register;
  - b) make reasonable efforts to identify gaming machine players who display or engage in problematic gambling behaviour;
  - c) if any gaming machine player displays or engages in multiple problematic gambling behaviour as outlined in the Authority's Guideline, during a single trading day, then the Officer must (at least once during that trading day):
    - i. request that the player take a break from gaming machine play until the close of trade on that day or night (noting that a player who complies with a request to take a break may remain on the premises and consume other goods and services);
    - ii. provide information about the self-exclusion scheme offered at the premises (being the scheme available pursuant to s. 49 of the Gaming Machines Act 2001) and ask whether the player wishes to participate in that scheme;
    - iii. provide information about and access to problem gambling counselling.

Any notable observations, issues or concerns are identified and recorded in the Incident Register and conveyed to the Duty Supervisor on any subsequent shift on handover.

Any urgent or serious gambling harm incident is immediately escalated to the Operations Manager or Duty Supervisor. Such incidents are also recorded in an internal Communications Log which senior staff are required to review each shift.

5. The Club maintains a gambling incident register (**Incident Register**) which is to record the following:-
  - a. any incident in which a patron of the venue displays or engages in problematic gambling behaviour of the kind specified in the "Signs of risky and problem gambling behaviour: Know your signs and how to act" factsheet published on the LGNSW website as amended from time to time.

- b. the time, location and machine number(s) and brief description (or identity, if known) of any gaming machine player identified displaying or engaging in that behaviour.
  - c. any proposed or implemented self or third-party exclusions of gaming machine players (specifying the players name (where provided or known), membership number (if applicable) and duration of any exclusion) and the patron's response to the same.
  - d. any breach or attempted breach of a self or third-party exclusion.
  - e. details of the action taken in response to incidents, applications and other matters recorded in the register.
6. The Secretary Manager reviews the gambling Incident Register at least once a month to consider whether an exclusion order is appropriate for any person who has been asked to self-exclude but has declined to do so.
  7. The Gambling Incident Register will be retained for at least 3 years and made available for inspection by NSW Police or Liquor & Gaming NSW officers.
  8. The Operations Manager is notified of any serious incidents on the day of the incident and all incidents are flagged in an internal Communications Log that is accessed by senior staff.
  9. Closed Circuit Television (CCTV) will be in operation throughout the Club and surrounds, including the Gaming Area. CCTV is monitored by Reception, Duty Supervisors and Managers back of house;
  10. Facilitate Multi-Venue Self-Exclusion (i.e. as opposed to single venue exclusion as required under section 49 of the Act) for patrons as required and also participate in the state-wide Multi-Venue Self-Exclusion scheme;
  11. A self-exclusion register is maintained and displayed in a staff only area within the Club and staff are reminded of the confidential nature of this register. Reception, Bar and Gaming floor staff are directed to review persons on the self-exclusion register daily.
  12. Gaming staff undertake on at least a weekly basis, a gaming signage audit, a record of which is held for at least 12 months and any exceptions are logged and immediately reported to the Duty Supervisor to rectify.
  13. Bi-annual gaming staff meetings (or more frequently if required) to refresh responsible gambling measures and address gambling incidents and to discuss matters such as the implementation of this GPOM, self-exclusion register updates, identified problem gamblers, feedback on managing incidents, supporting staff to approach patrons identified as at-risk, legislation amendments, signage and complaint procedures etc.
  14. The Club obtains EFT details in writing, with details of the amount and the destination account and a declaration signed by the patron stating that the patron is the beneficiary of the destination bank account;



15. The Club does not cash any cheques whatsoever;
16. Strategic placement (e.g in bathrooms) of signage regarding gambling awareness or counselling services.
17. The Club promotes responsible gambling behaviours among patrons via messages on the Club's website, newsletters and other marketing materials and incorporates promotional material from the ClubSAFE Ambassador designed to reduce stigma and encourage early help seeking behaviour.
18. Digital sign-in technology actively identifies self-excluded patrons on entry.
19. The Club has a customer complaints resolution policy which incorporates complaints related to the responsible conduct of gambling.
20. Any minors identified in the restricted areas are removed immediately from the restricted area and their parent/guardian are reminded that minors are to remain in their immediate company at all times. If the parent/guardian leaves a minor unattended again, they will be asked to leave the venue. Staff are directed to ensure that minors remain in non-restricted areas only.

We submit that the above measures exceed and go "Above & Beyond" that required by legislation and, most importantly, will reduce the risk of gambling harm at the Club and instil responsible gambling practices in staff and patrons.

#### 4. POSITIVE CONTRIBUTION

In the event that the GMT increase proposed herein is approved, the Applicant undertakes to provide a positive contribution in the form of a cash contribution to the Responsible Gambling Fund (**Community Benefit**) in accordance with section 36A of the Act.

If the Community Benefit were to be calculated as prescribed by ILGA's GL4014 Class 1 Local Impact Assessment process guideline, based on the Club's average gaming machine net profit per gaming machine *entitlement* for the year ended 30 November 2022, we estimate a total contribution sum in the amount of \$1,084,793.

Based on the Club's average gaming machine net profit per gaming machine for the year ended 30 November 2022 and, based on gaming machines in play as at that date, we estimate a total contribution sum in the amount of \$1,288,192.

We note that the quantum of the Club's gaming machines in use currently has been reduced to allow for COVID social distancing. Accordingly, we submit it would be unjust to calculate the Club's Community Benefit on the basis of gaming machines in use currently.

We also note that another registered club also in the Ulladulla SA2, some 3kms from the subject Club, had a GMT increase of 20, to 149, approved as recently as September 2022. In that instance a Community Benefit in the amount of \$578,160.13 was imposed.

Given the close proximity of this other registered club, a direct competitor of the Applicant Club, the only equitable outcome in this instance is that a similar Community Benefit sum be imposed on the Applicant.

Accordingly, should this GMT application be approved, the Applicant Club proposes to remit a Community Benefit sum in the total amount of \$600,000, payable in 5 equal instalments over 5 years.

The Club provides a safe and welcoming venue and has a suite of governance policies, including a Gaming Plan of Management, and provides a high level of customer service and actively supports its community.

The Applicant also remits taxes in accordance with the *Gaming Machines Tax Act* and will continue to do so.

As noted above, the Applicant has implemented a number of responsible gambling measures that go "above and beyond" those required by law.

The Applicant participates in the ClubGrants scheme and for the most recent year ended 31 August 2022 the Club supported the following organisations:-

CLUBGRANTS 2021/22	Project Name
Milton Ulladulla Junior Bulldogs	Sponsorship
Milton Ulladulla Football Club	Sponsorship
Ulladulla High - Presentation night	Presentation night
Milton Ulladulla Business Chamber	Christmas carols
Milton Hospital	Mental Health course
Christmas Hampers for the needy	Christmas Hampers for the needy
Koori Kids (Anzac Schools initiative)	Koori Kids (Anzac Schools initiative)
Ulladulla Police 000 fundraiser	Triple 0 Hootenanny
Ulladulla & Districts Netball Association	Ulladulla & Districts Netball Association
Milton Follies	Sponsorship
Conjola Rural Fire Brigade	Fundraising Raffle
Thirst Box Rally - Cancer Council	Sponsorship
RISE event (Kokoda Trek)	Rise Event
Surf Club - Easter Life saving	Easter life guards
The Cancer Support Foundation	Sponsorship
Entertainers community fundraiser	Sponsorship
The Distinguished Gentleman's Ride - Men's Mental Health	Donation
1st Burrill Ulladulla Sea Scouts	Purchase of life jackets & Volunteer Leader Training
Master Builders Association	Sponsorship
Mollymook Surf Club	Hi-Vis Vests & Youth Education and Training
Milton Ulladulla ExServos Golf Team	Sponsorship
Mollymook Bridge Club	Fundraising Raffle
Marine Rescue Ulladulla	Sponsorship & Automated External Defibrillators (AEDs)
Mollymook Surf Club Juniors - 2021/22 Season	Sponsorship
Ulladulla Children's Centre	New Junior Toilet suites
Ulladulla & districts Community Resources Centre	The Parenting Collective

CLUBGRANTS 2021/22	Project Name
Ulladulla Emotional Disturbance Unit	Ulladulla Emotional Disturbance Unit
Ulladulla Public School P&C	Indoor / Outdoor Sensory Space
Marine Rescue Kioloa	Portable VHF/DCN Radio
Mollymook Surf Lifesaving Club	Youth Education and Training
RSL & Service Clubs Association	Veterans Benevolent Fund
Safe Waters Community Care (homeless shelter)	Weekend Wage Support
Mollymook Outriggers	Sponsorship
Ulladulla Swim Club	New uniforms
Men of League	Sponsorship
Fiona Iver's fundraiser	Donation

Most importantly, the Club actively supports its community, especially in times of need. During the recent bushfires of the summer of 2019/2020, the Club became an emergency services hub and provided breakfast, lunch and dinner for all emergency service workers from State Emergency Services, Rural Fire Service, Ambulance, Police, etc.

The Club was the only local venue with a power generator during this period which enabled the provision of shelter, power, food and drinks, particularly on New Year's Eve where the Club served over 1,000 meals. Further the Club managed the local bushfire evacuation centre at Ulladulla Civic Centre and coordinated hospitality and accommodation services by also providing, food, drinks and shelter at that venue.

## 5. NOTIFY COMMUNITY

In accordance with section 37 of the Regulation, within two business days of the making of the threshold increase application as contemplated herein, the Club will notify the local council, police, health district and community services providers, as prescribed by the Regulation, of the making of this application.

The Club will also, within two business days, advertise the making of this application by affixing the prescribed notice to the front of its premises and by placing an advertisement in a local newspaper, being the Milton Ulladulla Times in this instance.

The above notices and advertisements will invite the community to inspect this LIA and make submissions to the Authority within 60 days and direct the community to the LGNSW website for this purpose.

## 6. CONCLUSION

Based on the above findings and the Club's venue design, practices and Gaming Plan of Management as implemented by qualified staff, the Authority can be satisfied that:

- this Class 1 Local Impact Assessment complies with the Act;
- any gambling activities at the Club are conducted in a responsible manner and comply with and, in many instances exceed, mandatory responsible conduct of gambling obligations;

- the application, if granted, will result in a positive contribution to the local community as outlined above.

Accordingly, we respectfully submit that the Authority consider approval of the Gaming Machine Threshold increase as contemplated herein.

## **7. ANNEXURE A – DEMOGRAPHY**

Attached as **Annexure A** is a “QuickStats” statistical summary of Ulladulla SA2 as obtained from the Australian Bureau of Statistics.

Should you have any queries regarding the above, please do not hesitate to contact me on telephone 02 9957 6700.

Yours faithfully,

A handwritten signature in black ink, appearing to read 'G A Russell', with a stylized flourish at the end.

**G A Russell**  
**Director**  
**Chartered Accountant**



✓ Latest release

# Ulladulla

2021 Census All persons QuickStats

Geography type [Statistical Areas Level 2](#)

Area code 114011282



Map data © OpenStreetMap contributors, CC-BY-SA

Powered by Esri

	<b>People</b>	<b>17,026</b>
	Male	48.3%
	Female	51.7%
	Median age	52
	<b>Families</b>	<b>4,881</b>
	Average number of children per family	
	for families with children	1.8
	for all households (a)	0.5
	<b>All private dwellings</b>	<b>9,572</b>
	Average number of people per household	2.3
	Median weekly household income	\$1,167
	Median monthly mortgage repayments	\$1,647
	Median weekly rent (b)	\$351
	Average number of motor vehicles per dwelling	1.8

(a) This label has been updated to more accurately reflect the Census concept shown in this data item. The data has not changed.



*(b) For 2021, median weekly rent calculations exclude dwellings being occupied rent-free.*

Small random changes have been made to all cell values for privacy reasons. These changes may cause the sum of rows or columns to differ by small amounts from the table totals.

## People and population

<b>People</b> <i>All people</i>	<b>Ulladulla</b>	<b>%</b>	<b>New South Wales</b>	<b>%</b>	<b>Australia</b>	<b>%</b>
Male	8,222	48.3	3,984,166	49.4	12,545,154	49.3
Female	8,802	51.7	4,087,995	50.6	12,877,635	50.7

More information on [Sex \(SEXP\)](#), [Place of usual residence \(PURP\)](#)

Table based on place of usual residence

<b>Indigenous status</b> <i>All people</i>	<b>Ulladulla</b>	<b>%</b>	<b>New South Wales</b>	<b>%</b>	<b>Australia</b>	<b>%</b>
Aboriginal and/or Torres Strait Islander	696	4.1	278,043	3.4	812,728	3.2
Non-Indigenous	15,480	90.9	7,404,499	91.7	23,375,949	91.9
Indigenous status not stated	843	5.0	389,616	4.8	1,234,112	4.9

More information on [Indigenous status \(INGP\)](#)

Table based on place of usual residence

<b>Age</b> <i>All people</i>	<b>Ulladulla</b>		<b>New South Wales</b>		<b>Australia</b>	
		%		%		%
Median age	52	N/A	39	N/A	38	N/A
0-4 years	810	4.8	468,056	5.8	1,463,817	5.8
5-9 years	866	5.1	500,810	6.2	1,586,138	6.2
10-14 years	932	5.5	501,135	6.2	1,588,051	6.2
15-19 years	819	4.8	457,896	5.7	1,457,812	5.7
20-24 years	558	3.3	496,185	6.1	1,579,539	6.2
25-29 years	653	3.8	555,967	6.9	1,771,676	7.0
30-34 years	772	4.5	586,057	7.3	1,853,085	7.3
35-39 years	892	5.2	580,185	7.2	1,838,822	7.2
40-44 years	827	4.9	522,984	6.5	1,648,843	6.5
45-49 years	908	5.3	516,915	6.4	1,635,963	6.4
50-54 years	965	5.7	500,027	6.2	1,610,944	6.3
55-59 years	1,128	6.6	490,155	6.1	1,541,911	6.1
60-64 years	1,469	8.6	471,628	5.8	1,468,097	5.8
65-69 years	1,556	9.1	416,493	5.2	1,298,460	5.1
70-74 years	1,490	8.7	372,234	4.6	1,160,768	4.6
75-79 years	1,035	6.1	268,110	3.3	821,920	3.2
80-84 years	711	4.2	183,409	2.3	554,598	2.2
85 years and over	644	3.8	183,895	2.3	542,342	2.1

More information on [Age \(AGEP\)](#).

Table based on place of usual residence

<b>Registered marital status</b> <i>People aged 15 years and over</i>	<b>Ulladulla</b>		<b>New South Wales</b>		<b>Australia</b>	
		%		%		%
Married	7,173	49.7	3,124,151	47.3	9,665,708	46.5
Separated	495	3.4	209,657	3.2	674,590	3.2
Divorced	1,603	11.1	569,516	8.6	1,831,952	8.8
Widowed	1,161	8.1	339,990	5.1	1,029,142	5.0
Never married	3,991	27.7	2,358,844	35.7	7,583,393	36.5

**Note:** In December 2017, amendments to the Marriage Act 1961 came into effect enabling marriage equality for all couples. For 2021, registered marriages include all couples.

More information on [Registered marital status \(MSTP\)](#).

Table based on place of usual residence

**Social marital status****People aged 15 years and over, usually resident  
and present in the household on Census night**

	<b>Ulladulla</b>	<b>%</b>	<b>New South Wales</b>	<b>%</b>	<b>Australia</b>	<b>%</b>
Registered marriage (a)	6,512	50.1	2,847,938	47.3	8,747,135	46.6
De facto marriage (b)	1,452	11.2	637,050	10.6	2,168,351	11.5
Not married	5,024	38.7	2,532,544	42.1	7,863,327	41.9

(a) In December 2017, amendments to the Marriage Act 1961 came into effect enabling marriage equality for all couples. For 2021, registered marriages include all couples.

(b) De facto marriage is when two people live together as partners who are not in a registered marriage. It includes people who report de facto, partner, common law husband/wife/spouse, lover, girlfriend or boyfriend.

More information on [Social marital status \(MDCP\)](#).

Table based on place of usual residence

## Education

Type of educational institution attending	Ulladulla	%	New South Wales	%	Australia	%
<i>People attending an educational institution</i>						
Preschool	347	8.6	167,196	6.8	484,185	6.3
<i>Primary</i>						
Primary - Government	1,026	25.4	444,985	18.1	1,421,300	18.5
Primary - Catholic	94	2.3	127,487	5.2	396,758	5.2
Primary - other non-Government	8	0.2	77,876	3.2	254,043	3.3
<i>Primary total (a)</i>	<i>1,131</i>	<i>28.0</i>	<i>651,375</i>	<i>26.5</i>	<i>2,075,224</i>	<i>27.0</i>
<i>Secondary</i>						
Secondary - Government	874	21.6	290,414	11.8	934,138	12.2
Secondary - Catholic	42	1.0	126,180	5.1	371,022	4.8
Secondary - other non-Government	31	0.8	94,885	3.9	322,314	4.2
<i>Secondary total (b)</i>	<i>947</i>	<i>23.4</i>	<i>512,195</i>	<i>20.9</i>	<i>1,629,624</i>	<i>21.2</i>
<i>Tertiary</i>						
Tertiary - Vocational education (including TAFE and private training providers)	307	7.6	207,586	8.5	601,901	7.8
Tertiary - University or other higher education	262	6.5	375,032	15.3	1,185,450	15.4
<i>Tertiary total (c)</i>	<i>564</i>	<i>13.9</i>	<i>583,617</i>	<i>23.8</i>	<i>1,789,994</i>	<i>23.3</i>
Other	67	1.7	74,331	3.0	242,821	3.2
Not stated	995	24.6	465,268	19.0	1,456,618	19.0

(a) Includes Primary - not further defined.

(b) Includes Secondary - not further defined.

(c) Includes Tertiary - not further defined.

More information on [Type of educational institution attending \(TYPP\)](#)

Table based on place of usual residence



<b>Level of highest educational attainment</b>	<b>Ulladulla</b>	<b>%</b>	<b>New South Wales</b>	<b>%</b>	<b>Australia</b>	<b>%</b>
<i>People aged 15 years and over</i>						
Bachelor Degree level and above	2,386	16.5	1,838,502	27.8	5,464,631	26.3
Advanced Diploma and Diploma level	1,290	8.9	616,322	9.3	1,946,738	9.4
Certificate level IV	570	4.0	216,768	3.3	719,425	3.5
Certificate level III	2,626	18.2	771,009	11.7	2,617,766	12.6
Year 12	1,536	10.7	954,987	14.5	3,104,116	14.9
Year 11	524	3.6	212,538	3.2	958,803	4.6
Year 10	2,277	15.8	698,390	10.6	2,086,306	10.0
Certificate level II	11	0.1	4,703	0.1	13,687	0.1
Certificate level I	0	0.0	764	0.0	2,614	0.0
Year 9 or below	1,380	9.6	487,855	7.4	1,490,444	7.2
Inadequately described	498	3.5	184,252	2.8	506,259	2.4
No educational attainment	35	0.2	64,827	1.0	175,844	0.8
Not stated	1,276	8.8	549,965	8.3	1,694,773	8.2

More information on [Level of highest educational attainment \(HEAP\)](#)

Table based on place of usual residence

## Cultural diversity

<b>Ancestry, top responses</b> <i>All people</i>	<b>Ulladulla</b>	<b>%</b>	<b>New South Wales</b>	<b>%</b>	<b>Australia</b>	<b>%</b>
English	7,632	44.8	2,404,990	29.8	8,385,928	33.0
Australian	6,752	39.7	2,307,549	28.6	7,596,753	29.9
Irish	2,161	12.7	735,340	9.1	2,410,833	9.5
Scottish	2,050	12.0	620,363	7.7	2,176,777	8.6
Italian	659	3.9	301,829	3.7	1,108,364	4.4

**Note 1:** Respondents had the option of reporting up to two ancestries on their Census form, and this is captured by the Ancestry multi response (ANCP) variable used in this table. Therefore, the sum of all ancestry responses for an area will not equal the total number of people in the area.

**Note 2:** Calculated percentages represent a proportion of the number of people in the area (including those who did not state an ancestry). In 2016 QuickStats percentages were based on total number of responses and will not be comparable to this table.

More information on [Ancestry multi response \(ANCP\)](#).

Table based on place of usual residence

<b>Country of birth, top responses</b> <i>All people</i>	<b>Ulladulla</b>	<b>%</b>	<b>New South Wales</b>	<b>%</b>	<b>Australia</b>	<b>%</b>
Australia	13,774	80.9	5,277,497	65.4	17,019,815	66.9
<i>Other top responses:</i>						
England	737	4.3	231,385	2.9	927,490	3.6
New Zealand	234	1.4	118,527	1.5	530,492	2.1
Scotland	96	0.6	27,659	0.3	118,496	0.5
Italy	80	0.5	47,197	0.6	163,326	0.6
Germany	78	0.5	28,921	0.4	101,255	0.4

More information on [Country of birth of person \(BPLP\)](#).

Table based on place of usual residence

<b>Country of birth of parents</b> <i>All people</i>	<b>Ulladulla</b>	<b>%</b>	<b>New South Wales</b>	<b>%</b>	<b>Australia</b>	<b>%</b>
Both parents born overseas	2,702	15.9	3,181,894	39.4	9,321,603	36.7
Father only born overseas	1,164	6.8	509,789	6.3	1,670,476	6.6
Mother only born overseas	877	5.2	369,492	4.6	1,257,942	4.9
Both parents born in Australia	11,230	66.0	3,529,168	43.7	11,663,577	45.9
Not stated	1,043	6.1	481,824	6.0	1,509,188	5.9

**Note:** For the 2021 Census, guidance was provided to respondents on how to answer for mother/father if their birth parent is unknown or they have same-sex parents.

More information on [Country of birth of parents \(BPPP\)](#)

Table based on place of usual residence

<b>Country of birth of father, top stated responses</b> <i>All people</i>	<b>Ulladulla</b>	<b>%</b>	<b>New South Wales</b>	<b>%</b>	<b>Australia</b>	<b>%</b>
Australia	12,157	71.4	3,909,559	48.4	12,959,282	51.0
England	1,212	7.1	412,867	5.1	1,626,778	6.4
New Zealand	329	1.9	155,208	1.9	673,661	2.6
Scotland	270	1.6	69,657	0.9	272,233	1.1
Italy	231	1.4	130,127	1.6	477,065	1.9

**Note:** For the 2021 Census, guidance was provided to respondents on how to answer for father if their birth parent is unknown or they have same-sex parents.

More information on [Country of birth of father \(BPMP\)](#)

Table based on place of usual residence

<b>Country of birth of mother, top stated responses</b> <i>All people</i>	<b>Ulladulla</b>	<b>%</b>	<b>New South Wales</b>	<b>%</b>	<b>Australia</b>	<b>%</b>
Australia	12,434	73.0	4,053,583	50.2	13,383,605	52.6
England	1,128	6.6	365,398	4.5	1,488,479	5.9
New Zealand	324	1.9	148,110	1.8	650,743	2.6
Scotland	226	1.3	60,233	0.7	241,428	0.9
Italy	187	1.1	106,001	1.3	391,399	1.5

**Note:** For the 2021 Census, guidance was provided to respondents on how to answer for mother if their birth parent is unknown or they have same-sex parents.

More information on [Country of birth of mother \(BPFP\)](#)

Table based on place of usual residence

<b>Religious affiliation, top responses</b> <i>All people</i>	<b>Ulladulla</b>	<b>%</b>	<b>New South Wales</b>	<b>%</b>	<b>Australia</b>	<b>%</b>
No Religion, so described	7,070	41.5	2,644,165	32.8	9,767,448	38.4
Catholic	3,352	19.7	1,807,730	22.4	5,075,907	20.0
Anglican	2,997	17.6	960,305	11.9	2,496,273	9.8
Not stated	1,119	6.6	548,340	6.8	1,751,052	6.9
Uniting Church	561	3.3	172,132	2.1	673,260	2.6

**Note:** 'No Religion, so described' does not include those who reported Secular and Other Spiritual Beliefs such as Atheism, Agnosticism and Own Spiritual Beliefs.

In Ulladulla, Christianity was the largest broad group religious group reported overall (52.5%) (excludes Not stated). The broad group level is the highest and most general level of the [Australian Standard Classification of Religious Groups, 2016](#).

More information on [Religious affiliation \(RELPA\)](#)

Table based on place of usual residence

<b>Language used at home, top responses (other than English) All people</b>	<b>Ulladulla</b>	<b>%</b>	<b>New South Wales</b>	<b>%</b>	<b>Australia</b>	<b>%</b>
Italian	92	0.5	64,039	0.8	228,042	0.9
Spanish	48	0.3	71,868	0.9	171,370	0.7
German	47	0.3	20,161	0.2	70,247	0.3
Thai	32	0.2	28,034	0.3	66,576	0.3
Greek	30	0.2	78,691	1.0	229,643	0.9
English only used at home	15,382	90.3	5,457,982	67.6	18,303,662	72.0
Households where a non-English language is used	383	5.5	856,911	29.5	2,295,688	24.8

More information on [Language used at home \(LANP\)](#)

Languages used at home data is based on place of usual residence

Households where a non-English language is used is based on place of enumeration

## Income and work

<b>Participation in the labour force</b> <i>People aged 15 years and over</i>	<b>Ulladulla</b>	<b>%</b>	<b>New South Wales</b>	<b>%</b>	<b>Australia</b>	<b>%</b>
In the labour force	6,801	47.2	3,874,012	58.7	12,695,853	61.1
Not in the labour force	6,789	47.1	2,341,417	35.5	6,888,081	33.1
Not stated	830	5.8	386,728	5.9	1,200,851	5.8

**Note 1:** Calculated percentages represent a proportion of people aged 15 and over in the area.

**Note 2:** The ABS Labour Force Survey provides the official estimates of Australia's labour force. More information is provided in [Comparing 2021 Census and Labour Force Survey](#).

More information on [Labour force status \(LFSP\)](#).

Table based on place of usual residence

<b>Employment status</b> <i>People who reported being in the labour force, aged 15 years and over</i>	<b>Ulladulla</b>	<b>%</b>	<b>New South Wales</b>	<b>%</b>	<b>Australia</b>	<b>%</b>
Worked full-time	3,057	44.9	2,136,610	55.2	7,095,103	55.9
Worked part-time	2,917	42.9	1,151,660	29.7	3,962,550	31.2
Away from work (a)	527	7.7	395,888	10.2	991,758	7.8
Unemployed	289	4.2	189,852	4.9	646,442	5.1

**Note 1:** Calculated percentages represent a proportion of people aged 15 and over who reported being in the labour force in the area.

**Note 2:** The ABS Labour Force Survey provides the official estimates of Australia's labour force. More information is provided in [Comparing 2021 Census and Labour Force Survey](#).

(a) Counts employed people who reported 0 hours of work the week before the Census or did not state their hours of work.

More information on [Labour force status \(LFSP\)](#).

Table based on place of usual residence

<b>Employment, hours worked</b> <i>Employed people aged 15 years and over</i>	<b>Ulladulla</b>	<b>%</b>	<b>New South Wales</b>	<b>%</b>	<b>Australia</b>	<b>%</b>
0 hours (away from work)	388	6.0	331,611	9.0	787,382	6.5
1-19 hours	1,382	21.2	504,158	13.7	1,681,120	14.0
20-29 hours	957	14.7	400,415	10.9	1,373,403	11.4
30-34 hours	583	9.0	247,088	6.7	908,031	7.5
35-39 hours	1,102	16.9	751,277	20.4	2,487,056	20.6
40-44 hours	1,069	16.4	768,161	20.9	2,448,402	20.3
45 hours or more	885	13.6	617,176	16.8	2,159,645	17.9

**Note:** Records the number of hours worked in all jobs held during the week before Census Night for employed people aged 15 years and over. This excludes any time off but includes any overtime or extra time worked.

More information on [Hours worked \(HRSP\)](#).

Table based on place of usual residence

<b>Occupation, top responses</b> <i>Employed people aged 15 years and over</i>	<b>Ulladulla</b>	<b>%</b>	<b>New South Wales</b>	<b>%</b>	<b>Australia</b>	<b>%</b>
Professionals	1,151	17.7	952,131	25.8	2,886,921	24.0
Technicians and Trades Workers	1,127	17.3	436,589	11.9	1,554,313	12.9
Community and Personal Service Workers	906	13.9	390,779	10.6	1,382,205	11.5
Managers	828	12.7	536,820	14.6	1,645,769	13.7
Sales Workers	739	11.4	294,889	8.0	986,433	8.2
Labourers	735	11.3	300,966	8.2	1,086,120	9.0
Clerical and Administrative Workers	679	10.4	480,612	13.0	1,525,311	12.7
Machinery Operators and Drivers	246	3.8	222,186	6.0	755,863	6.3

More information on [Occupation \(OCCP\)](#).

Table based on place of usual residence

<b>Industry of employment, top responses</b> <i>Employed people aged 15 years and over</i>	<b>Ulladulla</b>	<b>%</b>	<b>New South Wales</b>	<b>%</b>	<b>Australia</b>	<b>%</b>
Supermarket and Grocery Stores	272	4.2	92,329	2.5	299,810	2.5
Cafes and Restaurants	258	4.0	72,942	2.0	268,005	2.2
Accommodation	227	3.5	30,040	0.8	107,476	0.9
Secondary Education	178	2.7	64,612	1.8	205,360	1.7
Primary Education	173	2.7	76,275	2.1	265,249	2.2

More information on [Industry of employment \(INDP\)](#).

Table based on place of usual residence

<b>Median weekly incomes (a)</b> <i>People aged 15 years and over</i>	<b>Ulladulla</b>	<b>%</b>	<b>New South Wales</b>	<b>%</b>	<b>Australia</b>	<b>%</b>
Personal (b)	\$612	N/A	\$813	N/A	\$805	N/A
Family (c)	\$1,448	N/A	\$2,185	N/A	\$2,120	N/A
Household (d)	\$1,167	N/A	\$1,829	N/A	\$1,746	N/A

(a) Incomes are collected in ranges. The medians are then calculated using information from the Survey of Income and Housing.

(b) Excludes people aged 15 years and over who did not state their income.

(c) Excludes families where at least one family member aged 15 years and over did not state their income.

(d) Excludes households where at least one household member aged 15 years and over did not state their income.

More information on [Total personal income \(INCP\)](#), [Total family income \(FINF\)](#), [Total household income \(HIND\)](#).

Personal income data is based on place of usual residence

Family and household income data is based on place of enumeration



<b>Method of travel to work on the day of the Census, top responses</b> <i>Employed people aged 15 years and over</i>	<b>Ulladulla</b>	<b>%</b>	<b>New South Wales</b>	<b>%</b>	<b>Australia</b>	<b>%</b>
Car, as driver	4,092	62.9	1,587,613	43.1	6,347,498	52.7
Car, as passenger	310	4.8	117,143	3.2	466,904	3.9
Walked only	209	3.2	92,368	2.5	306,045	2.5
Truck	80	1.2	26,390	0.7	76,657	0.6
Bicycle	35	0.5	14,466	0.4	79,089	0.7
Did not go to work	772	11.9	487,646	13.2	1,417,449	11.8
Worked at home	822	12.6	1,141,467	31.0	2,531,262	21.0
People who travelled to work by public transport (a)	18	0.3	147,492	4.0	554,711	4.6
People who travelled to work by car as driver or passenger (b)	4,446	68.3	1,737,359	47.2	6,961,762	57.8

**Note:** Respondents had the option to report up to three methods of travel to work on the day of the Census.

(a) Includes people who used public transport (train, bus, ferry, tram/light rail), as at least one of their methods of travel to work on Census day.

(b) Includes people who travelled by car (as a driver, or as a passenger), as at least one of their methods of travel to work on Census day.

More information on [Method of travel to work \(MTWP\)](#).

Table based on place of usual residence

## Unpaid work and care

<b>Unpaid work and care</b> <i>People aged 15 years and over</i>	<b>Ulladulla</b>	<b>%</b>	<b>New South Wales</b>	<b>%</b>	<b>Australia</b>	<b>%</b>
Did unpaid domestic work (week before Census Night)	10,238	71.0	4,392,869	66.5	14,077,657	67.7
Provided unpaid care for child/children (during two weeks before Census Night)	3,293	22.8	1,669,763	25.3	5,471,756	26.3
Provided unpaid assistance to a person with a disability, health condition or due to old age (during two weeks before Census Night)	1,968	13.6	759,383	11.5	2,476,681	11.9
Did voluntary work through an organisation or group (last 12 months)	2,384	16.5	857,891	13.0	2,933,646	14.1

More information on [Unpaid domestic work \(DOMP\)](#), [Unpaid child care \(CHCAREP\)](#), [Unpaid assistance to a person with a disability, health condition, or due to old age \(UNCAREP\)](#), [Voluntary work for an organisation or group \(VOLWP\)](#).

Table based on place of usual residence

<b>Unpaid domestic work, number of hours</b> <i>People aged 15 years and over</i>	<b>Ulladulla</b>	<b>%</b>	<b>New South Wales</b>	<b>%</b>	<b>Australia</b>	<b>%</b>
Less than 5 hours	2,534	17.6	1,244,306	18.8	4,117,135	19.8
5 to 14 hours	4,068	28.2	1,748,728	26.5	5,663,904	27.3
15 to 29 hours	2,185	15.1	811,397	12.3	2,511,024	12.1
30 hours or more	1,466	10.2	588,433	8.9	1,785,591	8.6

**Note:** Measures the time spent during the week before the Census doing domestic work without pay for themselves and their household.

More information on [Unpaid domestic work: number of hours \(DOMP\)](#).

Table based on place of usual residence

## Health

Type of long-term health condition All people	Ulladulla	%	New South Wales	%	Australia	%
Arthritis	2,745	16.1	679,359	8.4	2,150,396	8.5
Asthma	1,412	8.3	625,835	7.8	2,068,020	8.1
Cancer (including remission)	771	4.5	227,981	2.8	732,152	2.9
Dementia (including Alzheimer's)	175	1.0	62,706	0.8	189,162	0.7
Diabetes (excluding gestational diabetes)	1,021	6.0	388,747	4.8	1,198,721	4.7
Heart disease (including heart attack or angina)	1,026	6.0	316,840	3.9	999,096	3.9
Kidney disease	259	1.5	77,272	1.0	231,777	0.9
Lung condition (including COPD or emphysema)	520	3.1	135,909	1.7	441,109	1.7
Mental health condition (including depression or anxiety)	1,742	10.2	646,412	8.0	2,231,543	8.8
Stroke	234	1.4	73,269	0.9	234,609	0.9
Any other long-term health condition(s)	1,489	8.7	626,827	7.8	2,041,929	8.0
No long-term health condition(s)	8,818	51.8	4,925,422	61.0	15,292,718	60.2
Not stated	1,375	8.1	654,833	8.1	2,066,251	8.1

**Note 1:** Respondents had the option of reporting multiple long-term health conditions. Therefore, the sum of all long-term health condition responses for an area will not equal the total number of people in the area.

**Note 2:** Calculated percentages represent a proportion of the number of people in the area (including those who did not answer the long-term health conditions question).

More information on [Type of long-term health condition \(LTHP\)](#).

Table based on place of usual residence

Count of selected long-term health conditions All people	Ulladulla	%	New South Wales	%	Australia	%
None of the selected conditions	9,435	55.4	5,240,109	64.9	16,302,537	64.1
One condition	3,807	22.4	1,480,498	18.3	4,791,516	18.8
Two conditions	1,531	9.0	456,604	5.7	1,490,344	5.9
Three or more conditions	880	5.2	240,117	3.0	772,142	3.0
Not stated	1,375	8.1	654,833	8.1	2,066,251	8.1

**Note:** Selected long-term health conditions include arthritis, asthma, cancer (including remission), dementia (including Alzheimer's), diabetes (excluding gestational diabetes), heart disease (including heart attack or angina), kidney disease, lung condition (including COPD or emphysema), mental health condition (including depression or anxiety) and stroke. Other long-term health conditions are not included in this count.

More information on [Count of selected long-term health conditions \(CLTHP\)](#)  
Table based on place of usual residence

## Australian Defence Force service

<b>Australian Defence Force Service</b> <i>People aged 15 years and over</i>	<b>Ulladulla</b>	<b>%</b>	<b>New South Wales</b>	<b>%</b>	<b>Australia</b>	<b>%</b>
Currently serving	27	0.2	24,512	0.4	84,865	0.4
Previously served (and not currently serving)	514	3.6	127,657	1.9	496,276	2.4
Has never served	13,047	90.5	6,050,636	91.6	18,954,152	91.2
Not stated	828	5.7	399,351	6.0	1,249,493	6.0

**Note:** Australian Defence Force Service includes service in the Regular and/or Reserves service. Includes Royal Australian Navy, Australian Army, Royal Australian Air Force, Second Australian Imperial Force, National Service and NORFORCE. Excludes service for non-Australian defence forces.

More information on [Australian Defence Force service \(ADFP\)](#).

Table based on place of usual residence

## Families

<b>Family composition</b> <i>All families</i>	<b>Ulladulla</b>	<b>%</b>	<b>New South Wales</b>	<b>%</b>	<b>Australia</b>	<b>%</b>
Couple family without children	2,570	52.7	809,586	37.9	2,608,834	38.8
Couple family with children	1,468	30.1	954,588	44.7	2,944,140	43.7
One parent family	787	16.1	337,729	15.8	1,068,268	15.9
Other family	46	0.9	34,061	1.6	108,941	1.6

More information on [Family composition \(FMCf\)](#)

Table based on place of enumeration

<b>Single (or lone) parents</b> <i>Proportion of the total single (or lone) parent population</i>	<b>Ulladulla</b>	<b>%</b>	<b>New South Wales</b>	<b>%</b>	<b>Australia</b>	<b>%</b>
Male	N/A	20.5	N/A	19.0	N/A	19.6
Female	N/A	80.3	N/A	81.0	N/A	80.4

More information on [Sex of lone parent \(SLPP\)](#)

Table based on place of enumeration

<b>Employment status of couple families</b> <i>Couple families where parents or partners were aged 15 years and over</i>	<b>Ulladulla</b>	<b>%</b>	<b>New South Wales</b>	<b>%</b>	<b>Australia</b>	<b>%</b>
Both employed, worked full-time	451	11.2	382,754	21.7	1,234,626	22.2
Both employed, worked part-time	281	7.0	83,120	4.7	264,182	4.8
One employed full-time, one part-time	699	17.3	320,350	18.2	1,155,042	20.8
One employed full-time, other not working	292	7.2	217,325	12.3	692,497	12.5
One employed part-time, other not working	312	7.7	111,828	6.3	339,960	6.1
Both not working	1,591	39.4	403,262	22.9	1,163,744	21.0
Other	244	6.0	181,101	10.3	449,640	8.1
Labour force status not stated	175	4.3	64,433	3.7	253,286	4.6

**Note:** The ABS Labour Force Survey provides the official estimates of Australia's labour force. More information is provided in [Comparing 2021 Census and Labour Force Survey](#).

More information on [Labour force status of parents/partners in families \(LFSF\)](#)

Table based on place of enumeration

## Dwellings

### Dwelling count

*Private dwellings (excl. visitor only and other non-classifiable households)*

	Ulladulla	%	New South Wales	%	Australia	%
Occupied private dwellings	6,970	77.1	2,900,468	90.6	9,275,217	89.9
Unoccupied private dwellings	2,068	22.9	299,524	9.4	1,043,776	10.1

More information on [Dwelling type \(DWTD\)](#).

Table based on place of enumeration

### Dwelling structure

*Occupied private dwellings (excl. visitor only and other non-classifiable households)*

	Ulladulla	%	New South Wales	%	Australia	%
Separate house	6,021	86.4	1,902,734	65.6	6,710,582	72.3
Semi-detached, row or terrace house, townhouse etc	557	8.0	340,582	11.7	1,168,860	12.6
Flat or apartment	157	2.3	630,030	21.7	1,319,095	14.2
Other dwelling	208	3.0	19,374	0.7	54,711	0.6

More information on [Dwelling structure \(STRD\)](#).

Table based on place of enumeration

### Number of bedrooms

*Occupied private dwellings (excl. visitor only and other non-classifiable households)*

	Ulladulla	%	New South Wales	%	Australia	%
None (includes studio apartments or bedsitters)	16	0.2	21,051	0.7	44,864	0.5
1 bedroom	188	2.7	190,792	6.6	488,681	5.3
2 bedrooms	996	14.3	657,578	22.7	1,768,530	19.1
3 bedrooms	3,037	43.6	1,006,121	34.7	3,617,803	39.0
4 or more bedrooms	2,634	37.8	983,314	33.9	3,224,351	34.8
Number of bedrooms not stated	100	1.4	41,623	1.4	130,989	1.4
Average number of bedrooms per dwelling	3.3	N/A	3.1	N/A	3.1	N/A
Average number of people per household	2.3	N/A	2.6	N/A	2.5	N/A

More information on [Number of bedrooms in a private dwelling \(BEDD\)](#), [Number of persons usually resident in dwelling \(NPRD\)](#).

Table based on place of enumeration



<b>Number of registered motor vehicles</b> <i>Occupied private dwellings (excl. visitor only and other non-classifiable households)</i>	<b>Ulladulla</b>	<b>%</b>	<b>New South Wales</b>	<b>%</b>	<b>Australia</b>	<b>%</b>
None	299	4.3	262,031	9.0	673,969	7.3
1 motor vehicle	2,777	39.8	1,096,761	37.8	3,353,737	36.2
2 motor vehicles	2,682	38.5	989,258	34.1	3,366,738	36.3
3 or more vehicles	1,110	15.9	508,694	17.5	1,745,924	18.8
Number of motor vehicles not stated	105	1.5	43,732	1.5	134,848	1.5

**Note:** Motor vehicles excludes motorbikes, motor scooters and heavy motor vehicles.

More information on [Number of registered motor vehicles \(VEHD\)](#)

Table based on place of enumeration

## Housing

### Household composition

**Occupied private dwellings (excl. visitor only and other non-classifiable households)**

	Ulladulla	%	New South Wales	%	Australia	%
Family households	4,794	68.8	2,065,107	71.2	6,542,648	70.5
Single (or lone) person households	2,008	28.8	723,716	25.0	2,370,742	25.6
Group households	169	2.4	111,646	3.8	361,822	3.9

More information on [Household composition \(HHCD\)](#).

Table based on place of enumeration

### Tenure type

**Occupied private dwellings (excl. visitor only and other non-classifiable households)**

	Ulladulla	%	New South Wales	%	Australia	%
Owned outright	3,516	50.4	914,537	31.5	2,872,331	31.0
Owned with a mortgage (a)	1,705	24.5	942,804	32.5	3,242,449	35.0
Rented (b)	1,555	22.3	944,585	32.6	2,842,378	30.6
Other tenure type (c)	94	1.3	55,931	1.9	181,518	2.0
Tenure type not stated	107	1.5	42,613	1.5	136,538	1.5

(a) Includes dwellings purchased under a shared equity scheme.

(b) Excludes dwellings being occupied rent-free, this is not comparable to 2016 QuickStats data.

(c) Comprises dwellings occupied rent free, occupied under a life tenure scheme and other tenure type.

More information on [Tenure type \(TEND\)](#).

Table based on place of enumeration

### Household income

**Occupied private dwellings (excl. visitor only and other non-classifiable households)**

	Ulladulla	%	New South Wales	%	Australia	%
Less than \$650 total household weekly income (a)	N/A	24.5	N/A	16.3	N/A	16.5
More than \$3,000 total household weekly income (a)	N/A	10.2	N/A	26.9	N/A	24.3

(a) Percentages (%) exclude dwellings with 'Partial income stated' or 'All incomes not stated.'

More information on [Total household income \(weekly\) \(HIND\)](#).

Table based on place of enumeration

**Rent weekly payments****Occupied private dwellings (excl. visitor only and other non-classifiable households) being rented**

	Ulladulla		New South Wales		Australia	
		%		%		%
Median rent (a)	351	N/A	420	N/A	375	N/A
Renter households where rent payments are less than or equal to 30% of household income (b)	678	43.6	529,731	56.1	1,667,080	58.7
Renter households with rent payments greater than 30% of household income (b)	747	48.0	335,404	35.5	915,317	32.2
Unable to determine (c)	126	8.1	79,448	8.4	259,992	9.1

(a) Median rent calculations exclude dwellings being occupied rent-free, this is not comparable to 2016 QuickStats data.

(b) This is not comparable with historical QuickStats, as applicable households included in this calculation have changed. For details on how Household income is derived please refer to [RAID](#).

(c) Unable to determine includes those households in which income and/or housing costs were not, or were only partially stated, by persons in the household.

More information on [Rent payments \(weekly\) \(RNTD\)](#), [Rent affordability indicator \(RAID\)](#).

Table based on place of enumeration

**Mortgage monthly repayments****Occupied private dwellings (excl. visitor only and other non-classifiable households) owned with a mortgage or purchased under a shared equity scheme**

	Ulladulla		New South Wales		Australia	
		%		%		%
Median mortgage repayments	1,647	N/A	2,167	N/A	1,863	N/A
Owner with mortgage households where mortgage repayments are less than or equal to 30% of household income (a)	1,235	72.4	677,486	71.9	2,398,902	74.0
Owner with mortgage households with mortgage repayments greater than 30% of household income (a)	282	16.5	163,060	17.3	468,817	14.5
Unable to determine (b)	183	10.7	102,255	10.8	374,734	11.6

(a) This is not comparable with historical QuickStats, as applicable households included in this calculation have changed. For details on how Household income is derived please refer to [MAID](#).

(b) Unable to determine includes those households in which income and/or housing costs were not, or were only partially stated, by persons in the household.

More information on [Mortgage repayments \(monthly\) \(MRED\)](#), [Mortgage affordability indicator \(MAID\)](#).

Table based on place of enumeration

## Aboriginal and/or Torres Strait Islander peoples

<b>People characteristics</b>	<b>Ulladulla</b>		<b>New South Wales</b>		<b>Australia</b>	
<i>Aboriginal and/or Torres Strait Islander people</i>		%		%		%
Male	362	51.8	138,179	49.7	403,709	49.7
Female	337	48.2	139,862	50.3	409,025	50.3
Median age	25	N/A	23	N/A	24	N/A

More information on [Sex \(SEXP\)](#), [Indigenous status \(INGP\)](#)

Table based on place of usual residence

<b>Dwelling characteristics</b>	<b>Ulladulla</b>		<b>New South Wales</b>		<b>Australia</b>	
<i>Occupied private dwellings (excl. visitor only and other non-classifiable households) where at least one person was Aboriginal and/or Torres Strait Islander</i>		%		%		%
Average number of people per household	2.9	N/A	3.1	N/A	3.1	N/A
Average number of people per bedroom	0.9	N/A	1	N/A	1	N/A
Median weekly household income (a)	1,226	N/A	1,558	N/A	1,507	N/A

(a) Excludes households where at least one person aged 15 years and over in the household did not state their income.

More information on [Number of bedrooms in a private dwelling \(BEDD\)](#), [Household composition \(HHCD\)](#), [Total household income \(HIND\)](#), [Indigenous household indicator \(INGDWTD\)](#)

Table based on place of enumeration

<b>Mortgage and rent</b>	<b>Ulladulla</b>		<b>New South Wales</b>		<b>Australia</b>	
<i>Occupied private dwellings (excl. visitor only and other non-classifiable households) where at least one person was Aboriginal and/or Torres Strait Islander</i>		%		%		%
Median weekly rent (a)	350	N/A	340	N/A	300	N/A
Median monthly mortgage repayments	1,733	N/A	1,755	N/A	1,721	N/A

(a) Median rent calculations exclude dwellings being occupied rent-free, this is not comparable to 2016 QuickStats data.

More information on [Rent weekly payments \(RNTD\)](#), [Mortgage monthly repayments \(MRED\)](#), [Indigenous household indicator \(INGDWTD\)](#)

Table based on place of enumeration

Please note that there are small random adjustments made to all cell values to protect the confidentiality of data. These adjustments may cause the sum of rows or columns to differ by small amounts from table totals.

