

**LOCAL IMPACT ASSESSMENT
CLASS 1 APPLICATION
LGA BAND 2**

**FORBES GOLF
&
SPORTSMANS
HOTEL**

**FORBES GOLF & SPORTSMANS HOTEL
LOCAL IMPACT ASSESSMENT
CLASS 1 APPLICATION**

Contents

EXECUTIVE SUMMARY	3
INTRODUCTION	3
1. THE HOTEL	4
2. COMMUNITY BENEFITS.....	5
3. HARM MINIMISATION	8
4. POSITIVE CONTRIBUTION.....	10
5. LOCAL COMMUNITY & RELATED MATTERS	11
6. CONCLUSION	13
Annexure “A”	14
Letter from Can Assist – 2 pages	14
Annexure “B”	16
Hotel Menu	16
Annexure “C”	17
Hotel Floor Plan	17
Annexure “D”	19
Gaming Room Proposed Location	19

PREPARED BY – CRITTENDEN MANGEMENT (AUST) PTY LTD

P.O Box 5177

WOLLONGONG NSW 2520

Phone: 1300 20 40 20 Fax: 0242275640 Mobile: 0407784728 E-Mail: critto@bigpond.com.au

FORBES GOLF & SPORTSMANS HOTEL
LOCAL IMPACT ASSESSMENT
CLASS 1 APPLICATION

EXECUTIVE SUMMARY

- This is an LIA submission for The Forbes Golf and Sportsman's Hotel (License No. LIQH440018931) (the "Hotel"), for a LGA Band 2, Class 1 Application.
- The hotel trades from the premises at Lot 12 Newell Highway (Parkes Road), Forbes, NSW, 2871. The Hotel is located within the Forbes Local Government Area, which is classified by the Independent Liquor and Gaming Authority as a "Band 2" LGA.
- This is a Class 1 application and approval is sought to allow a "low range" increase of the hotel's gaming machine threshold by ten (10), to increase that threshold to a total of ten (10).
- The Hotel currently holds **NO** entitlements for gaming machines and therefore a threshold increase of ten (10) gaming machines would therefore make an overall total of ten (10) gaming machines.
- Positive outcomes are outlined as follows and will be further extrapolated in the application.
 - The Hotel will contribute \$24,000 to the Forbes Branch of Cancer Patients Assistance Society New South Wales, known as "CAN ASSIST". The payment schedule is outlined in the letter marked **Annexure "A"**.
 - The Hotel has contributed a total in excess of \$30,000 over the last three (3) financial years to various organisation in the Forbes Shire and will continue to do so subject to the approval of this application.
 - It is expected that an increase in employment opportunities of up to four (4) additional part time positions.
- The licensee (Mr. Gordon Maxwell Hurry) is a member of the local Forbes Liquor Accord.
- The Hotel will adhere to all responsible gambling measures as stipulated in the Gaming Machines Act 2011

INTRODUCTION

The following submission will outline and detail the benefits that will be provided by the Hotel to the local community.

A copy of this Local Impact Assessment will be available for Public Inspection during the hotels operating hours.

PREPARED BY – CRITTENDEN MANGEMENT (AUST) PTY LTD

P.O Box 5177

WOLLONGONG NSW 2520

Phone: 1300 20 40 20 Fax: 0242275640 Mobile: 0407784728 E-Mail: critto@bigpond.com.au

FORBES GOLF & SPORTSMANS HOTEL
LOCAL IMPACT ASSESSMENT
CLASS 1 APPLICATION

1. THE HOTEL

- 1.1 The Hotel is located on the site of the former Forbes Golf Club.
- 1.2 The Forbes Golf Club had closed and was purchased by the current owners in 2012, re-opening the facility in February 2013 through the successful application of a Liquor – Hotel License, “The Forbes Golf and Sportman Hotel” thereby making the facility available once again for the benefit of golfers and the broader community.
- 1.3 The premises has been recently refurbished in keeping with local council requirements. These refurbishments include the renovation of the function room, the upgrading of the function rooms commercial kitchen, the renovation of the external area adjacent to the function room (upstairs) to meet local council requirements for hand rail heights (safety). The upgrading and refurbishing of the venues ground floor restaurant and dining area. All window glass was replaced to meet Australian Standards.
- 1.4 The hotel trades from 10.00 am until midnight on Monday to Saturday and from 10.00am to 10.00 pm on Sundays.
- 1.5 The hotel is NOT in the immediate vicinity of a school, the closest of which is 900 meters from the venue, of a place of worship the closest of which is 1.1 kilometres from the venue and the district hospital the closest of which is 2.9 kilometres from the venue.
- 1.6 There are currently **NO** Gaming machines operated within the hotel.
- 1.7 The provision of gaming would only be one aspect of the variety of services and facilities currently provided at the hotel.
- 1.8 The hotel is a meeting place for locals, business people, travellers and golfers, centred around the provision of meals and beverages in a casual environment. The hotel offers restaurant dining. A copy of the restaurant menu is attached and marked **Annexure “B”**. (The menu is subject to seasonal change)
- 1.9 The hotel restaurant is open for lunch and dinner from Tuesday to Sunday. Meals can be enjoyed in the refurbished dining room or the outdoor dining area adjacent to the golf course.
- 1.10 Floor Area - The floor space area of the hotel is 2723 square metres. A plan of the hotel, which discloses its layout and shows the facilities provided within the hotel, is attached and marked **Annexure “C”**.
- 1.11 The hotel offers live entertainment (***generally limited to a live duo***) on a Saturday.
- 1.12 The hotel has an upstairs function facilities catering for up to 300 sit down guests.
- 1.13 The hotel offers a range of services in order to meet the needs of its varied patrons, which also include dance classes, gym classes, school formals etc, the hotel also houses the local squash courts.

PREPARED BY – CRITTENDEN MANGEMENT (AUST) PTY LTD

P.O Box 5177

WOLLONGONG NSW 2520

Phone: 1300 20 40 20 Fax: 0242275640 Mobile: 0407784728 E-Mail: critto@bigpond.com.au

FORBES GOLF & SPORTSMANS HOTEL
LOCAL IMPACT ASSESSMENT
CLASS 1 APPLICATION

2. COMMUNITY BENEFITS

2.1 Since the re-opening of the venue, the hotel has sponsored and provided benefits and assistance to the following organisations

In Financial Year 2012 - 2013 the hotel assisted the following organisations:

Eugowra Rugby League Club	\$2500
Forbes Golf Open	\$2000
Forbes Golf Classic	\$2000
GUNNS Womens Netball	\$300
Forbes Junior Squash Association	\$500
Forbes Senior Squash Association	\$500
Jack Newton Junior Golf Development Program	\$200
Forbes CAN ASSIST Monthly Meetings	\$80
Forbes Golf Club Members	\$80
Sixers Golf Tournament	\$300
Three Golf Tournament	\$200
Womens Golf	\$200
Central West District Womens Golf	\$200
Local Police Association	\$120
Ambulance Association	\$120
Forbes Car Club	\$100
Forbes Junior Rugby League Club	\$1000
Total	\$10400

In Financial Year 2013 - 2014 the hotel assisted the following organisations :

Forbes Golf Open	\$1500
Forbes Golf Classic	\$1500
GUNNS Womens Netball	\$300
Forbes Junior Squash Association	\$500
Forbes Senior Squash Association	\$500
Jack Newton Junior Golf Development Program	\$200
Forbes CAN ASSIST Monthly Meetings	\$80
Forbes Golf Club Members	\$80
Sixers Golf Tournament	\$300
Three Golf Tournament	\$300
Womens Golf	\$200
Central West District Womens Golf	\$200
Local Police Association	\$120
Ambulance Association	\$120
Forbes Car Club	\$100
Forbes Junior Rugby League Club	\$1000
Total	\$7000

PREPARED BY – CRITTENDEN MANGEMENT (AUST) PTY LTD

P.O Box 5177

WOLLONGONG NSW 2520

Phone: 1300 20 40 20 Fax: 0242275640 Mobile: 0407784728 E-Mail: critto@bigpond.com.au

FORBES GOLF & SPORTSMANS HOTEL
LOCAL IMPACT ASSESSMENT
CLASS 1 APPLICATION

In Financial Year 2014 - 2015 the hotel assisted the following organisations :

Forbes Golf Open	\$1500
Forbes Golf Classic	\$1000
GUNNS Womens Netball	\$300
Forbes Junior Squash Association	\$500
Forbes Senior Squash Association	\$500
Jack Newtown Junior Golf Development Program	\$200
Forbes CAN ASSIST Monthly Meetings	\$80
Forbes Golf Club Members	\$80
Sixers Golf Tournament	\$200
Three Golf Tournament	\$200
Womens Golf	\$200
Central West District Womens Golf	\$200
Local Police Association	\$120
Ambulance Association	\$120
Forbes Car Club	\$100
Forbes Junior Rugby League Club	\$1000
Forbes Senior Rugby League	\$300
Cricket Team	\$1000
Crime and Protection	\$467.50
The Volunteer Fire Fighter	\$495
Paramedics	\$434.50
National Emergency Bulletin	\$500
Our Kids	\$407
Volunteer Rescue Magazine	\$385
Community Volunteers	\$459
Australian Institute of Policing	\$434.50
Nursing Bulletin	\$385
First Line Journal (Army)	\$275
Senior Support Magazine	\$429
Child and Youth Protection	\$391
Total	\$12,763.50

The hotels assistance to the community since reopening has been a total of \$30,163.50.

- 2.2 Through our arrangement with the Forbes Council we also continue to provide access to the venue for the golfers through our commitment to upkeep and maintain the change room and shower facilities for the golfing fraternity which are located within the confines of the hotel.
- 2.3 Subject to the success of this application there is a real prospect of additional local employment opportunity within the hotel. The addition of ten (10) EGM's would necessitate additional staff to facilitate general customer service requirements.

PREPARED BY – CRITTENDEN MANGEMENT (AUST) PTY LTD

P.O Box 5177

WOLLONGONG NSW 2520

Phone: 1300 20 40 20 Fax: 0242275640 Mobile: 0407784728 E-Mail: critto@bigpond.com.au

FORBES GOLF & SPORTSMANS HOTEL
LOCAL IMPACT ASSESSMENT
CLASS 1 APPLICATION

- 2.4 The potential for local area benefit would also be provided in the form of additional capital expenditure in the form of new furnishings etc for the proposed gaming area. This would be helpful to the Forbes LGA.
- 2.5 The potential increase in gaming revenue would also lead to an expansion of the current services provided at the hotel, and would assist in the provision of better services for both locals and visitors to the area.
- 2.6 To gain an increase of ten (10) gaming machines, the Hotel would be required to purchase fifteen (15) and therefore relinquish five (5) to the State Government. This would lead to a decrease in five (5) gaming machines in New South Wales.

PREPARED BY – CRITTENDEN MANGEMENT (AUST) PTY LTD

P.O Box 5177

WOLLONGONG NSW 2520

Phone: 1300 20 40 20 Fax: 0242275640 Mobile: 0407784728 E-Mail: critto@bigpond.com.au

FORBES GOLF & SPORTSMANS HOTEL
LOCAL IMPACT ASSESSMENT
CLASS 1 APPLICATION

3. HARM MINIMISATION

In addition to the minimum legislative requirements, the hotel being a member of the AHA (NSW) will implement the AHA's Game Care self-exclusion program.

- 3.1 The provision of gaming machines would merely be one aspect of the services and facilities provided at the hotel.
- 3.2 Gaming would be provided from a gaming room within the hotel. The ***proposed*** gaming room is shown on the layout plan ***Annexed and marked "D"***.
- 3.3 The gaming room will comply with Clause 8 of the Gaming Machine Regulation 2010 in that:-
 - (a) Would be located in a "bar area" of the hotel (and would not be located in an area in which a minor's area authorisation or minors functions authorisation is in force);-
 - (b) The gaming room will be physically separated from the general bar area by permanent opaque walls;
 - (c) Patrons will not be compelled to pass through the gaming room in order to enter or leave the hotel or to gain access to another part of the hotel;
 - (d) Entry is provided free of charge;
 - (e) Machines will be situated so that they cannot be seen from any place outside the hotel;
 - (f) All machines will be suitably spaced to facilitate access;
 - (g) The gaming room will at all times be personally supervised by a gaming room supervisor, and or electronic means (CCTC);
 - (h) There will be a space that provides reasonable access to at least one operating bar and one toilet for each gender, without the need for patrons to go out onto the street or outside the hotel; and
 - (i) The gaming room will not be able to be accessed directly from a public street.

PREPARED BY – CRITTENDEN MANGEMENT (AUST) PTY LTD

P.O Box 5177

WOLLONGONG NSW 2520

Phone: 1300 20 40 20 Fax: 0242275640 Mobile: 0407784728 E-Mail: critto@bigpond.com.au

FORBES GOLF & SPORTSMANS HOTEL
LOCAL IMPACT ASSESSMENT
CLASS 1 APPLICATION

- 3.4. Other requirements of the Gaming Machines Act and Gaming Machine Regulation are complied with, in that:-
- (a) All staff involved in the gaming duties will hold a current and approved responsible conduct of gaming (RCG) certificate. Copies of certificates and or competency card are kept at the hotel and are available for inspection;
 - (b) Staff are trained in the requirements of the self-exclusion scheme and associated referral process;
 - (c) All statutory signage will be prominently displayed in the gaming room on the gaming machines and on the ATM.
 - (d) Player Information Brochures informing patrons of the dangers of problem gambling and of the availability of counselling and the self-exclusion scheme, will be displayed at the hotel;
 - (e) The hotel's automatic telling machine (ATM) is located outside the gaming room. Patrons may not make withdrawals on credit;
 - (f) There will be no advertising or promotion of the availability of gaming machines within the hotel;
 - (g) There will be a clock present and visible to all patrons within the gaming room; and it will be set to and or within ten (10) minutes of the correct time and will be visible from all persons playing machines;
 - (h) The hotel does not accept third party cheques;
 - (i) Cashing of cheques would be limited to approved clients and further limited to \$400.00 per day per customer and further limited to one cheque per person per day.
 - (j) There will be a maximum limit of \$2,000.00 on cash payment for winnings;
 - (k) No minors will be permitted access to the gaming areas at the venue;
 - (l) Consumer information on the chance of winning maximum prizes and jackpots will be made available in the gaming area;
 - (m) The hotel does not and will not publish any gaming machine advertising;
 - (n) All gambling related signs are situated within the hotel and cannot be seen from outside the hotel; and
 - (o) No inducements are or will be offered to gamble at the venue.

PREPARED BY – CRITTENDEN MANGEMENT (AUST) PTY LTD

P.O Box 5177

WOLLONGONG NSW 2520

Phone: 1300 20 40 20 Fax: 0242275640 Mobile: 0407784728 E-Mail: critto@bigpond.com.au

FORBES GOLF & SPORTSMANS HOTEL
LOCAL IMPACT ASSESSMENT
CLASS 1 APPLICATION

4. POSITIVE CONTRIBUTION

- 4.1 The hotel proposes to provide financial assistance in the sum of \$24,000 to Cancer Patients Assistance Society New South Wales, known as "CAN ASSIST". They provide direct financial assistance to people in country NSW affected by cancer.

"CAN ASSIST" operates Lillier Lodge in Wagga Wagga. These patients can access the Wellness program providing things like relaxation sessions, outings, activities, talks and entertainment to promote wellness and social support during their stay.

A copy of a letter from "CAN ASSIST", describing its services and explaining the particular use to which the funds will be put is annexed and marked "A". The Hotel's donation of \$24,000 will provide much needed support for travel, accommodation and medical expenses and in particular large chemist accounts.

The payments would be made with an upfront donation of \$4,000 and then a monthly direct deposit payment of \$800 for a period of 25 months thus totalling \$24,000.

The proposed donation of \$24,000, to this not-for-profit organization which is a grass roots, community based charity dedicated solely to supporting country NSW people and their families who are affected by cancer. Due to travel and accommodation expenses, it can easily cost a country family affected by cancer up to five times more than a city family just to access treatment. The reality is that many country mums and dads simply can't afford treatment, let alone the weeks spent away from their family and work.

- 4.2. CAN ASSIST is a registered charity:

- ABN: 76 000 412 715
- Charitable Fund Raising Number: 12748
- Tax File Number: 92 864 629

- 4.3. CAN ASSIST is heavily reliant on the generosity of sponsorships and donations. The Hotel's donation of \$24,000 will provide much needed assistance for cancer care patients and their immediate family.

- 4.4 The Hotel will subject to the grant of this application continue to provide support to the wide range of organisations in the Forbes Shire as detailed on Pages 5 & 6.

PREPARED BY – CRITTENDEN MANGEMENT (AUST) PTY LTD

P.O Box 5177

WOLLONGONG NSW 2520

Phone: 1300 20 40 20 Fax: 0242275640 Mobile: 0407784728 E-Mail: critto@bigpond.com.au

FORBES GOLF & SPORTSMANS HOTEL
LOCAL IMPACT ASSESSMENT
CLASS 1 APPLICATION

5. LOCAL COMMUNITY & RELATED MATTERS

- 5.1 Forbes is located in the central west of New South Wales. The population taken from the Australian Bureau of Statistics website as at year 2012 was 9,526. Agriculture, Forestry and Fishing are the main sources of employment at 19.2%. Other than Agriculture and Forestry the employment sector is diverse as can be evidenced by the following:

Mining (%)	2.8
Manufacturing (%)	5.8
Electricity, Gas, Water & Waste Services (%)	1.2
Construction (%)	5.5
Wholesale Trade (%)	3.9
Retail Trade (%)	10.9
Accommodation & Food Services (%)	5.8
Transport, Postal and Warehousing (%)	4
Information Media & Telecommunications (%)	0.3
Financial & Insurance Services (%)	1.4
Rental, Hiring, & Real Estate Services (%)	0.9
Professional Scientific & Technical Services (%)	4.7
Administrative & Support Services (%)	1.8
Public Administration & Safety (%)	5
Education & Training (%)	9.4
Health Care & Social Assistance (%)	10.9
Arts & Recreation Services (%)	0.5
Other services (%)	3.5

The average rate of unemployment is 5.4%.

The current rate of unemployment in Forbes is lower than both the NSW State and Australian National Average.

The population by age group is as follows: Year 2012

Population by Age group - Persons - 0 to 14 years (%)	20.5
Population by Age group - Persons - 15 years to 24 years (%)	12.5
Population by Age group - Persons - 25 years to 34 years (%)	10.3
Population by Age group - Persons - 35 years to 44 years (%)	11
Population by Age group - Persons - 45 years to 54 years (%)	13.2
Population by Age group - Persons - 55 years to 64 years (%)	13.2
Population by Age group - Persons - 65 years to 74 years (%)	10.5
Population by Age group - Persons - 75 years to 84 years (%)	6.5
Population by Age group - Persons - 85 years and over (%)	2.4

The population aged 18 years and older 75%

PREPARED BY – CRITTENDEN MANGEMENT (AUST) PTY LTD

P.O Box 5177

WOLLONGONG NSW 2520

Phone: 1300 20 40 20 Fax: 0242275640 Mobile: 0407784728 E-Mail: critto@bigpond.com.au

FORBES GOLF & SPORTSMANS HOTEL
LOCAL IMPACT ASSESSMENT
CLASS 1 APPLICATION

Overall

Male (no.)	4,767
Female (no.)	4,759
Median Age (in years)	41.3
ABORIGINAL AND TORRES STRAIT ISLANDER PEOPLES	9.6% of the population

The average income \$39,513

The statistical work demographic is Technicians and Trades Workers 15%, Professionals 14.9%, Managers 14.5%, Labourers 12.5%, Clerical and Administrative Workers 11.9%, Sales Workers 10.5%, Community and Personal Service Workers 10.2%, Machinery Operators and Drivers 8.5%.

- 5.2 Forbes Shire Council documents "Social Plan" identifies the need for additional support services for disadvantaged people living in the LGA and the current lack of funding for existing services. One of the key aspects of the strategic plan was Point 1 on Page 4 of the document, quote "Enhancing the provision of adequate medical services to the residents of Forbes".
- The document can be downloaded
http://www.forbes.nsw.gov.au/f.ashx/docs/3314-Social_Plan_2008.pdf
- 5.2 The document provides a list of target groups and areas of concern that Council considers having a high priority in terms of meeting current gaps in services. The list includes
- i. the continued availability of medical services
 - ii. the introduction and support of facilities for Forbes Youth
 - iii. continued operation of aged care services
 - iv. continued provision of services for the disabled
 - v. investigation into Aboriginal health
 - vi. education and employment opportunities
 - vii. availability of transport for people with a disability
 - viii. access to medical services located beyond the Forbes LGA
 - ix. the importance of developing an interagency working group to increase communication amongst service providers and work together to provide joint services
- 5.3. The SEIFA disadvantage score for Forbes is "936". Using the guidance notes provide by SEIFA indicates that the population of Forbes LGA is more advantaged than a number of Australian communities. SEIFA Notes advise "A high score indicates a relative lack of disadvantage in general". The rank suggests that this local community is not particularly vulnerable to gaming related harm and is unlikely to be detrimentally impacted by the grant of this application.

PREPARED BY – CRITTENDEN MANGEMENT (AUST) PTY LTD

P.O Box 5177

WOLLONGONG NSW 2520

Phone: 1300 20 40 20 Fax: 0242275640 Mobile: 0407784728 E-Mail: critto@bigpond.com.au

FORBES GOLF & SPORTSMANS HOTEL
LOCAL IMPACT ASSESSMENT
CLASS 1 APPLICATION

5.3 Consultation with the local community has occurred with the following meetings being held between Hotel Licensee (Gordon Maxwell Hurry) and

- Forbes Council (M. Teale) on 27th February 2015
- NSW Police Force (Snr. Constable Tracy Bolam) on 27th February 2015
- Forbes Junior Golf Club (Brett Thomas) on 16th February 2015
- Forbes Squash Club (Gary Dempsey & Graeme Coombs) on 15th February 2015
- Forbes Golf Association (Steve Graelis) on 20th February 2015

Where the above representatives of the organisations were informed of the proposed LIA Submission for Gaming Entitlements.

All organisations were supportive of the application.

Minutes of these meetings are available upon request.

6. CONCLUSION

6.1. The information provided in this Class 1 LIA complies with the Authority's Guidelines. In particular it:-

- identifies and defines the local community; and
- addresses the responsible gambling and harm minimisation measures to be undertaken by the hotel;
- notes that the hotel is not in the immediate vicinity of a school, a place of worship or a hospital.
- provides information to show that a positive contribution will be made to that local community if this LIA is approved and the hotel's gaming machine threshold is increased by ten (10).
- It is submitted that the funding to "CAN ASSIST" services responds to the needs of the local community as identified in the Forbes Shire Council Social Plan by assisting with the "Enhancement of the provision of adequate medical services to the residents of Forbes".

PREPARED BY – CRITTENDEN MANGEMENT (AUST) PTY LTD

P.O Box 5177

WOLLONGONG NSW 2520

Phone: 1300 20 40 20 Fax: 0242275640 Mobile: 0407784728 E-Mail: critto@bigpond.com.au

**FORBES GOLF & SPORTSMANS HOTEL
LOCAL IMPACT ASSESSMENT
CLASS 1 APPLICATION**

Annexure "A"

Letter from Can Assist – 2 pages

P.O. Box 688
FORBES NSW 2871

President
Kerry Dunstan
Phone 02 68521013

Secretary
Wendy Dunstan
Phone 02 68521013

Treasurer
Maureen Field
Phone 02 68514630

21 August 2014

**Mr Gordon Hurry
Forbes Golf & Sportsman's Hotel
Parkes Road
FORBES NSW 2871**

Dear Gordon

Re: Your Application for a Licence to operate poker machines

I understand that you are applying for a licence to operate poker machines in your hotel and to support your application you have spoken to our organisation.

You have advised us that your hotel has selected our charity as the recipient of financial assistance from your hotel

The amounts you may consider offering are a \$24000.00 total over two years with an upfront payment of \$4000.00 then the balance in scheduled monthly payments of \$800.00 per month for twenty five months.

On the basis of the above offer our charity supports your application to the Liquor Gaming and Racing Board for a licence to operate poker machines in your Forbes Hotel.

Can Assist Forbes is one of fifty branches in NSW and the oldest branch being some fifty six years old. Each branch operates it's own budget and is audited yearly.

Cancer Patients Assistance Society New South Wales is the registered name of the organisation and Can Assist is the trading name. Cancer Patients Assistance Society New South Wales is a registered charity and provides a structure whereby rural towns can raise funds to assist cancer patients and those caring for them in the community.

The Board of Directors of CPAS are bound by numerous obligations and liabilities of various Acts including the Corporations Act 2001, the Charitable Fund Raising Act 1991, the Lotteries & Art

PREPARED BY – CRITTENDEN MANGEMENT (AUST) PTY LTD

P.O Box 5177

WOLLONGONG NSW 2520

Phone: 1300 20 40 20 Fax: 0242275640 Mobile: 0407784728 E-Mail: critto@bigpond.com.au

**FORBES GOLF & SPORTSMANS HOTEL
LOCAL IMPACT ASSESSMENT
CLASS 1 APPLICATION**

Union Act 1901, the Privacy Act 1988, the Health Records and Information Privacy Act 2002, and the Income Tax Assessment Act 1997.

The Australian Business Number is : 76 000 412 715

The Charitable Fund Raising Number is : 12748

The Tax File Number is : 92 864 629

CPAS is exempt from Income Tax pursuant to Section 23 of the Income Tax Assessment Act. ATO Reference NO: AF 1594 CSF 1210.

The proposed monies would be used by Can Assist Forbes Branch to support our clients financially who are suffering from cancer. This financial support could be for travel/accommodation, medical expenses in particular large chemist accounts.

In the year ended 30 June 2014 our Forbes Branch expended over \$57000.00 in patient assistance and this figure seems to be on the rise each year.

The Forbes Branch is very lucky to have support from various groups within our community which enables us to be able to offer some comfort to families at a time of much need.

Our current committee has been involved with Can Assist for over twelve years and unfortunately has seen an increase in needs of local cancer sufferers over this time.

Again we are very grateful for your offer of support for our organisation and if you require further information please contact myself on 0268521013 or Murray Field on 0268514680.

Yours sincerely



Kerry Dunstan
President

PREPARED BY – CRITTENDEN MANGEMENT (AUST) PTY LTD

P.O Box 5177

WOLLONGONG NSW 2520

Phone: 1300 20 40 20 Fax: 0242275640 Mobile: 0407784728 E-Mail: critto@bigpond.com.au

FORBES GOLF & SPORTSMANS HOTEL
LOCAL IMPACT ASSESSMENT
CLASS 1 APPLICATION

Annexure "B"
Hotel Menu

FLAVOURS RESTAURANT & BISTRO

HERB OR GARLIC BREAD \$5.00

ENTREES

PUMPKIN SOUP WITH WARM BREAD \$8.00

COGNAC MARINATED QUAIL, SPINACH & WALNUT SALAD \$18.00

MAIN COURSES

*TASMANIAN SALMON FILLET, SEAWEED, BROCCOLONI & TOMATO SALSA
\$26.00*

SCOTCH FILLET, GREEN PEPPER SAUCE, CHIPS & SALAD \$27.00

RED WINE BRAISED RABBIT, VEGETABLES & MASH POTATO \$28.00

*SEARED DUCK BREAST, BRUSSEL SPROUTS MOUSSE & ORANGE SAUCE
\$32.00*

*OVEN ROASTED RACK OF LAMB, ROSEMARY & GARLIC JUS. SERVED WITH
VEGETABLES 34.00*

THE BLACKBOARD WITH THE SPECIAL IS ALSO AVAILABLE

KIDS MEAL ARE SERVED WITH CHIPS & SALAD ALL 8.00

MINI STEAK OR SLIM SAUSAGES OR GRILLED CHICKEN BREAST.

DESSERTS

LIME & LEMON TART, ICE CREAM & CREAM \$10.00

RHUBARB CRUMBLE, ICE CREAM & CREAM \$12.00

MANGO COCONUT PYRAMIDES \$12.00

PREPARED BY – CRITTENDEN MANGEMENT (AUST) PTY LTD

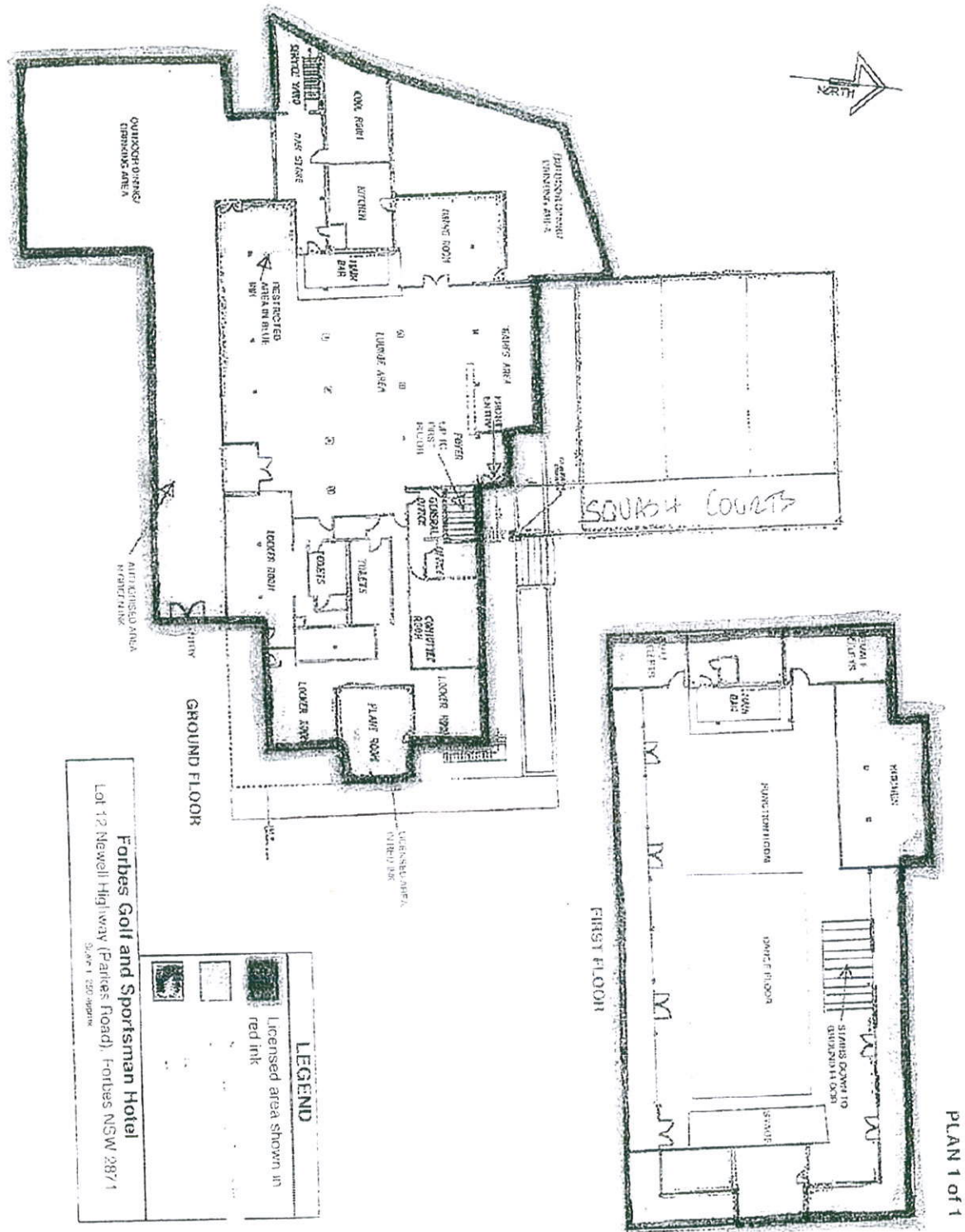
P.O Box 5177

WOLLONGONG NSW 2520

Phone: 1300 20 40 20 Fax: 0242275640 Mobile: 0407784728 E-Mail: critto@bigpond.com.au

FORBES GOLF & SPORTSMANS HOTEL
LOCAL IMPACT ASSESSMENT
CLASS 1 APPLICATION

Annexure "C"
Hotel Floor Plan



PREPARED BY – CRITTENDEN MANGEMENT (AUST) PTY LTD

P.O Box 5177

WOLLONGONG NSW 2520

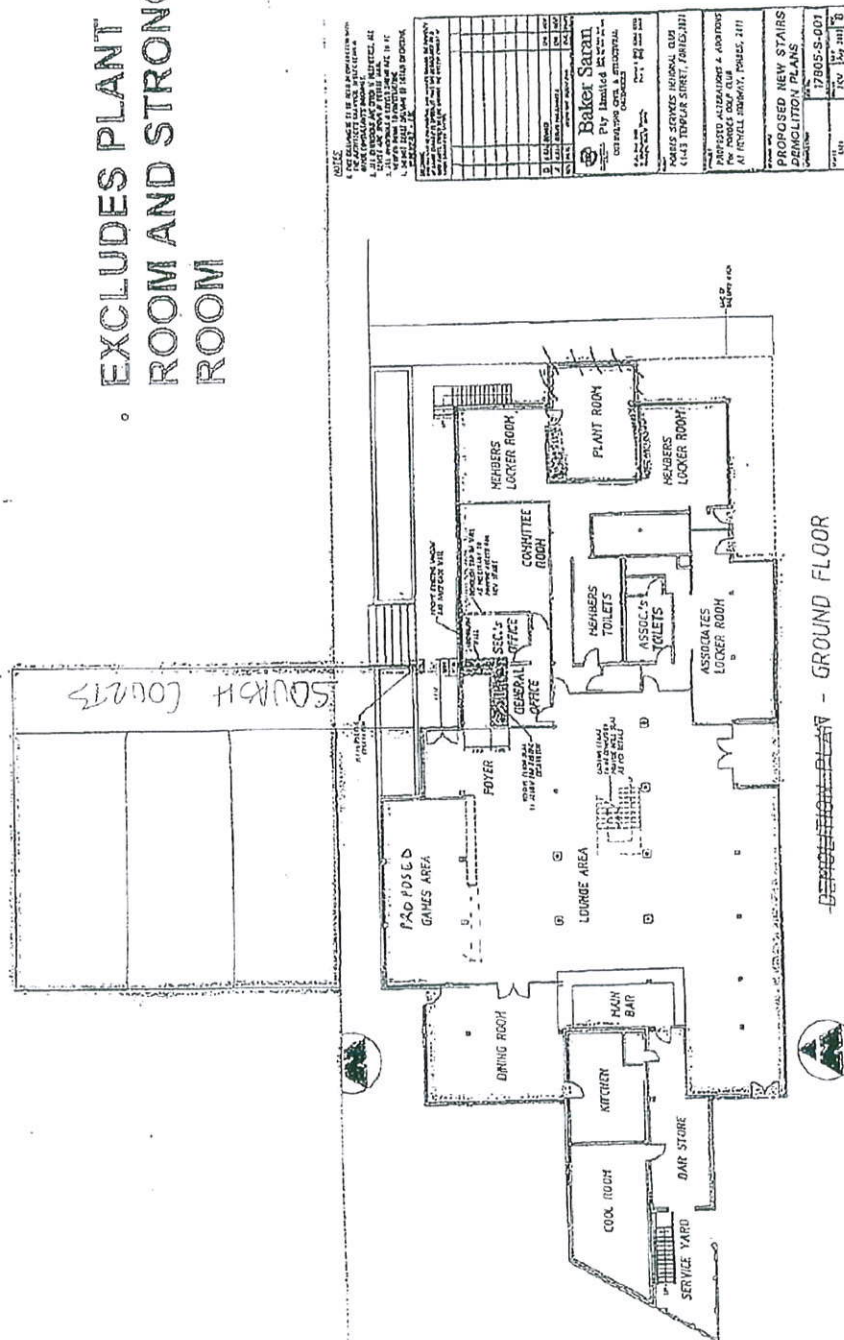
Phone: 1300 20 40 20 Fax: 0242275640 Mobile: 0407784728 E-Mail: critto@bigpond.com.au

**FORBES GOLF & SPORTSMANS HOTEL
LOCAL IMPACT ASSESSMENT
CLASS 1 APPLICATION**

Schedule B

ACCESS AREA

EXCLUDES PLANT
ROOM AND STRONG
ROOM



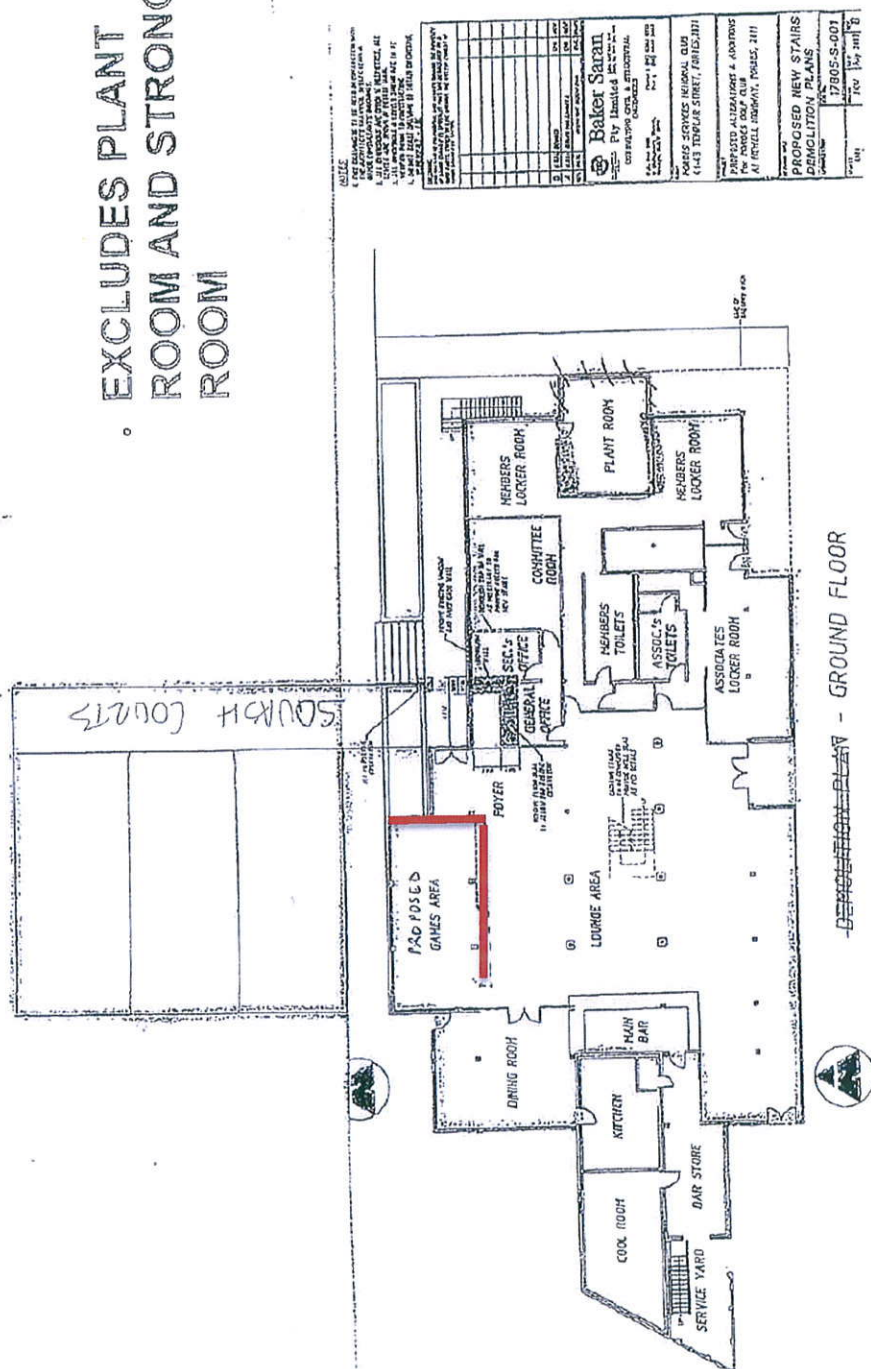
Annexure "D"

Gaming Room Proposed Location

Schedule B

ACCESS AREA

EXCLUDES PLANT
ROOM AND STRONG
ROOM



Page 19 of 19