



DESIGN COLLABORATIVE Pty Limited

ABN 36 002 126 954
ACN 002 126 954

Planning and Development Consultants

www.designcollaborative.com.au

G W Smith
BSurv(QLD)
MCP(MIT)
MIS FPIA
MRTPI FAPI

H M Sanders
MPhil(Lon)
MSc(Rdg)
FPIA MRTPI
MRICS

J Lidis
BTP (UNSW)
MPIA CPP

CLASS 1 LOCAL IMPACT ASSESSMENT



PREPARED UNDER THE GAMING MACHINES ACT 2001 AND
THE GAMING MACHINES REGULATION 2002

TO ACCOMPANY AN APPLICATION FOR AN INCREASE OF FIVE (5)
IN THE GAMING MACHINE THRESHOLD OF

PJ'S IRISH PUB, PARRAMATTA

SITUATED AT 74 CHURCH STREET, PARRAMATTA

Prepared for the licensee

Paul Anthony Devine

FEBRUARY 2014

Ref: 130293.1LIA

EXECUTIVE SUMMARY

Paul Anthony Devine, the licensee of PJ's Irish Pub, 74 Church Street, Parramatta, is applying to the Independent Liquor and Gaming Authority for an increase of five (5) in the gaming machine threshold of the Pub. Approval of that application would permit the number of gaming machines in the Pub to increase from 25 to 30.

The legislation requires such applications to be accompanied by a Local Impact Assessment (LIA). Because the City of Parramatta is classified in Band 2 by the Authority and because the increase sought is deemed to be in the low range, the LIA required is a Class 1. This is that Assessment.

Section 2 of this LIA describes the Pub's location and surroundings while Section 3 describes the Pub, its facilities, operation and clientele.

Section 4 describes the Pub's gaming room and Section 5, the measures for harm minimisation and responsible gaming which are employed in it. Each of these complies with the relevant provisions of the legislation.

Section 6 postulates the local and broader communities of the Pub and sets out some pertinent characteristics of the population living in the former. Section 7 comments briefly on competitive facilities in those communities.

Section 8 sets out the specific community benefits which will arise if the application is granted, based on the applicant donating \$5,000 for each unit increase in the gaming machine threshold approved to the Children's Hospital Westmead and the PCYC Parramatta in equal shares.

Section 9 sets out the measures which will be undertaken to consult with the community, gambling counselling bodies and others when the application is lodged and indicates the applicant's willingness to address any matters raised as a result of that consultation as far as may be reasonably possible.

Section 10 is a conclusion that the granting of the application will provide a positive contribution towards the local community and that the Pub conducts its gaming activities in a responsible manner. At this stage, any concerns that may be raised by the community have yet to be identified however, if any are, the applicant undertakes to address them.

1.0 INTRODUCTION

- 1.1 Under the Gaming Machines Act (*the Act*), certain applications made to the Independent Liquor and Gaming Authority (*the Authority*) seeking to increase the gaming machine threshold (*GMT*) of a hotel need to be accompanied by a Local Impact Assessment (*LIA*). [The GMT establishes the maximum number of gaming machines that can be kept in a hotel.] The Authority must be satisfied that the LIA meets specified criteria before it can approve it and that approval is a necessary prerequisite to the Authority approving the application for the GMT increase.
- 1.2 Paul Anthony Devine, the licensee of PJ's Irish Pub Parramatta (*the Pub*) - an established hotel - is applying, under Section 34 of the Act, to the Authority for approval of a GMT increase of five (5) at the Pub, i.e., from 25 to 30.
- 1.3 Design Collaborative Pty Ltd (*DC*) was instructed by Mr. Devine to prepare this LIA1 to accompany his application
- 1.3 Section 36 of the Act specifies that, for the Authority to approve an LIA, it must be satisfied that:-
- a. *the LIA complies with the requirements of the relevant provisions of the Act and the Gaming Machines Regulation (the Regulation);*
 - b. *the LIA demonstrates the gambling activities in the relevant venue will be conducted in a responsible manner; and*
 - c. *in the case of a Class 1 LIA (LIA1) related to an established hotel, that:-*
 - i. *the proposed increase in the GMT will provide a positive contribution towards the local community; and*
 - ii. *the LIA has adequately addressed community concerns arising out of the consultation process required under the Regulation.*
- 1.5 An LIA1 is required to accompany Mr. Devine's application because the Pub is in the City of Parramatta (*the City*) which is classified, by the Authority, pursuant to Section 33 of the Act, as a Band 2 LGA and because the increase in GMT being sought is in the low range of increases, as defined in Clause 34 of the Regulation.

2.0 THE PUB'S LOCATION AND SURROUNDINGS

- 2.1 The Pub stands at 74 Church Street, Parramatta, on the south-eastern corner of the intersection of Church and Parkes Streets, and on the southern edge of the Parramatta City Centre (vide **Plans 130293/1 and 2**). Anderson Street forms the eastern boundary of the Pub property.
- 2.2 To the north of Parkes Street, development is largely commercial with buildings ranging in height from one to many storeys. Along each side of Church Street south of the Pub, the development consists almost wholly of motor vehicle showrooms and display yards. Behind that commercial development on the western side of Church Street, the development is residential ranging from low-rise flat buildings to cottages. To the east of the Pub across Anderson Street, the development is mixed and includes a multi-storied Holiday Inn with an adjoining public car park and other multi-storey buildings. Further to the south, the residential component increases with the distance from the Pub.

- 2.3 There have been a number of multi-storied buildings erected in the vicinity of the Pub in recent years and more have been approved. While some of those buildings are used for commercial purposes, others contain apartments.
- 2.4 The intersection of Church and Parkes Streets is signal-controlled and carries very large volumes of traffic, both day and night, since - west of that intersection - Parkes Street becomes the Great Western Highway.
- 2.5 The Parramatta City Centre, as the dominant centre in Western Sydney, attracts people from much of that area who come to it to work, to shop, for business and professional services, to attend public offices, for recreation and so on. As such, its daytime population is large. In recent years, the Centre's role as an evening destination for dining and entertainment has also been increasing. (The Pub contributes to that trend by providing entertainment and a convivial environment for socialising.)

3.0 THE PUB

- 3.1 The land on which the Pub stands has been occupied by a hotel for over a century. The bulk of the present Pub building was erected in the inter-war period but substantial additions have been made to it in recent decades. The hotel on the land has been known by various names, the current name being adopted following its acquisition by the present owner, the Iris Hotel Group, in March 2011.
- 3.2 The inter-war building was a typical two-storeyed brewery hotel, built to the alignments of Church and Parkes Streets. Apart from an open deck at first level, the more recent additions are single storeyed and are on the south and east of the earlier building. The Pub provides surface car parking for 16 vehicles at the rear with access off Anderson Street. The interiors of the Pub have been substantially refurbished by the current owner, the work having been completed in September 2012. **Annexure 1** contains plans of the two floors of the building.
- 3.3 The ground floor of the Pub contains a large public bar off the corner of Church and Parkes Streets; a smaller Sports Bar containing the Pub's TAB to its south abutting Church Street; an irregularly-shaped gaming room at the rear of the Sports Bar and an L-shaped restaurant/bistro which partly encircles a walled beer garden at the rear. Part of the gaming room is designed to permit smoking. There are two blocks of sanitary facilities and other back-of-house facilities on this floor. The Pub has an extensive basement for cellars and the like.
- 3.4 The first floor is largely confined to what was built in the inter-war building for guests' accommodation plus a substantial open terrace erected in recent years at its rear. Some of the original internal partitions have been removed so as to open the floor up for use for functions. The first floor is usually only opened for that purpose and then mainly on Friday and Saturday evenings.
- 3.5 Patrons can enter the Pub from Parkes Street, Church Street or from the carpark, via a doorway between the gaming room and bistro. The first is the principal point of entry, particularly, in the evening. It opens into a lobby where there is scanning equipment installed to record patrons' identities. That equipment is used each Friday and Saturday evenings and on any evening where the entertainment provided is expected to attract a markedly larger than normal number of patrons.
- 3.6 The Pub engages security personnel every night and, on Friday and Saturday nights, has an additional officer stationed in the rear car park.

- 3.7 The Pub trades from 10 am each day until up to 5 am the following day, Monday to Saturday (although it may close earlier if there is insufficient trade to justify it remaining open), and until midnight on Sunday.
- 3.8 The Pub has 46 people on its payroll and there are usually 30 plus security personnel on duty on busy Friday or Saturday nights.
- 3.9 The Pub provides entertainment in the public bar each night. On Monday and Tuesday, the entertainment currently takes the form of poker; on Wednesday, trivia; on Thursday, a DJ and/or karaoke; on Friday and Saturday, DJs and live bands and, on Sunday, live local talent and/or karaoke.
- 3.10 The Pub is popular. During the daytime, its clientele consists mainly of business people. In the evenings, it retains some workers and attracts local residents. However, appreciable numbers of people who patronise the Pub are patrons of long-standing who have moved to more distant suburbs but who return to it to socialise. (Information gathered from its scanners indicates that former local residents who continue to visit the Pub regularly now live in places such as Blacktown, Castle Hill, Kellyville and Rouse Hill.) Entertainment is a major factor in attracting evening trade. The restaurant has a solid lunch time trade and evening dining is also popular. Trade swells when there are major sporting events in Parramatta or nearby.
- 3.11 The majority of the patrons appear to be of Caucasian descent with those of East Asian and Lebanese descents forming recognisable minorities. Despite the local population containing many who were born in India, they are not prominent in the Pub's clientele.
- 3.12 The Pub was listed as a Level 1 licence under Schedule 4 of the Liquor Act. It is now listed as Level 2 and the applicant hopes that, through the use of the scanning system and improved security, it will escape that classification in the next round of assessments.
- 3.13 Despite that classification, the Pub was nominated for a number of AHA awards in 2013 including Best Redeveloped Hotel, Best Entertainment Venue, Best Traditional Bar Hotel and Best PubTAB as well as for Best Social Media Activity.

4.0 GAMING IN THE PUB

- 4.1 As noted above, the Pub's gaming room is irregular in shape with the bulk of the machines located in the part where players can smoke. The layout is spacious. **Annexure 2** contains a plan of the room showing the proposed locations of machines when the GMT is increased.
- 4.2 The Pub's GMT is 25 which was established in 2005. Until recently, it kept 23 machines but that number has recently been increased to 25.
- 4.3 The Pub's gaming machines are all located in the gaming room which conforms with the provisions in Clause 9 of the Regulation in that:-
- i) the gaming room is located in/off a bar area;
 - ii) the gaming room is physically separated from the general bar area by walls and doors;
 - iii) patrons are not compelled to pass through the gaming room in order to enter or leave the Pub or in order to gain access to another part of it;
 - iii) entry to the gaming room is free-of-charge;

- iv) the gaming machines cannot be seen or heard from any place outside the Pub that is used by the public or to which the public has access;
- v) all gaming machines are suitably spaced in order to facilitate access;
- vi) the gaming room is supervised at all times by electronic means and/or the physical presence of the licensee or an employee; and
- vii) the gaming room cannot be accessed directly from a public street.

When the additional machines are installed, the Pub's gaming facility will continue to comply with these requirements.

- 4.4 The slow take-up of entitlements over recent years reflected the generally depressed trading conditions affecting the whole of Parramatta during the global financial crisis. However, the Parramatta City Centre is now experiencing rapid redevelopment which, coupled with the refurbishment of the Pub's premises and its new management, have resulted in greatly improved trading conditions in the Pub. As a result, during busy trading periods, the capacity of the Pub's existing machines to cope with the demand to play is being taxed more and more frequently. (At most other times, the level of demand is well within the capacity of its existing machines.) This inability to meet demand when patrons want to play, means that the Pub is failing to meet the reasonable expectations of those of its patrons who wish to play and that, in turn, adversely affects its business. The GMT increase sought would assist the Pub to meet the demands of its patrons in peak periods and should improve its profitability, thereby enabling it to finance further improvements to its premises and/or its operations.

5.0 HARM MINIMISATION AND RESPONSIBLE GAMING

- 5.1 Under Clause 37 (c) of the Regulation, details of the harm minimisation and responsible gambling measures that are in place must be provided in an LIA.
- 5.2 The applicant conducts gaming in the hotel in compliance with the provisions of the Act and Regulations as well as the policies and guidelines adopted by the Australian Hotels Association (NSW). It has a standard arrangement with the AHA/Centa-Care Gambling Counselling Program if problem gambling counselling is required.
- 5.3 Gaming in the Pub is conducted in accord with the provisions of the Act and Regulation in that:-
- The applicant and all staff involved in gaming duties hold Responsible Conduct of Gambling Certificates. Copies of those certificates are kept on the premises and are available for inspection by relevant authorities.
 - The Pub operates a self-exclusion scheme which complies with the provisions of the legislation through AHA/Centa-Care.
 - The Pub has an arrangement with that organisation in relation to the provision of problem gambling counselling services and patrons are advised of the *gambling HELP* service.
 - Relevant staff members have training in self-exclusion and on referral to counselling services.
 - All required signage and notices are displayed in conspicuous positions and are maintained.
 - Gambling counselling service contact cards are attached to each bank of approved gaming machines.

- Player activity statements under player reward schemes are made available on request from patrons in accordance with the Regulation.
- A clock is visible from any seated position in the gaming room.
- No ATM is located in the gaming room.
- The Pub does not provide credit.
- There is a limit of \$2,000 on cash payments for winnings.
- The Pub does not cash cheques.
- The Pub does not offer promotional prizes that are indecent or offensive.
- The Pub does not offer any inducement to gaming.
- Staff members are not permitted to play gaming machines when on duty at the Pub.
- The presence of gaming machines is not made known outside the Pub.
- A player reward system is operated at the Pub but it is open to patrons whether or not they play gaming machines.

5.4 If the application for a GMT increase is granted, these practices will be maintained.

5.5 The applicant reports that neither he nor any of his managers have been approached by any patron seeking gambling counselling or self-exclusion during the time he has been licensee of the Pub. There is list of people who have been, and are, self-excluded from hotels in Parramatta generally and the Pub observes those self-exclusions. The applicant reports no problems arising with those who are self-excluded.

6.0 THE LOCAL AND BROADER COMMUNITIES

- 6.1 For the purpose of this application, the area adopted as being that within which the *local community* lives or works is that lying within about a kilometre radius of the Pub. That *local community* embraces the localities (or parts of the localities) of Mays Hill, Harris Park, the City Centre (as far north as the Parramatta River and west to Parramatta Park) as well as the northern edges of Granville and Merrylands. **Plan 130293/3** shows the extent of that area.
- 6.2 At the 2011 Census, the area in the City bounded by the Parramatta River on the north, Alfred Street on the east, the M4 on the south and City boundary on the west, i.e., an area slightly smaller than the local community, accommodated a population of about 18,500. Based on data from the Bureau of Transport Statistics, in 2011, some 48,000 people worked in that part of the City of Parramatta, most being located in the City Centre to the north of the Pub. Many of those who live or work in the local community do so within walking distance of the Pub.
- 6.3 As noted above, the Pub is busier in the evenings than during the daytime. That appears to be due, in part, to it being patronised by workers after work and, in part, to the attraction it provides through its entertainment. As an entertainment venue, it attracts patronage from areas well beyond the local community described above. It is difficult to define the extent of that broader area but it would appear reasonable to include within it most, if not all, of the Cities of Parramatta, Holroyd and Auburn. Together, they housed some 340,000 people at the 2011 Census and could be termed the *broader community* of the Pub. (No doubt, there are small numbers of people living even further afield who visit the Pub on occasions for social events, to enjoy particular entertainment or the like. However, they would represent such small proportions of the populations in those more distant local

government areas that those local government areas can reasonably be omitted from the broader community.)

- 6.4 While the local community embraces much of the Parramatta City Centre, the Pub lies outside the part of the Centre where there is a high level of daytime pedestrian activity.
- 6.5 From an examination of the results of the 2011 Census from the 40 Statistical Local Areas (SLA) in the City which approximate the extent of the local community, some of the characteristics of that community's population become evident. These include:
- i. Its population was young with 39 of the 40 SLAs having median ages below the NSW median age of 37;
 - ii. The number of persons of ATSI descent was low, there being only 101 recorded or 0.54% of the population compared to 2.5% in NSW;
 - iii. In only three of the 40 SLAs did the percentages of those who were separated, divorced or widowed exceed the NSW level of 17.5%;
 - iv. The percentages of households where only English was spoken rarely exceeded 30% (and, in some SLAs, fell below 20%) which differed substantially from the 72.5% reported in NSW;
 - v. Generally, the percentage of the populations in the SLAs born in Australia was very low. Sixteen SLAs recorded percentages between 10 and 20%, seventeen between 20 and 30%, and seven over 30% when the NSW percentage was 68.6%;
 - vi. India was the dominant country of birth in 25 of the SLAs. China was the next most prominent but was only the dominant country of birth in four SLAs. Other countries which ranked third or fourth in terms of prominence, constituting much smaller percentages of the population in individual SLAs, included Saudi Arabia, New Zealand, Bangladesh, Lebanon, Philippines, Afghanistan, Iran, Greece, South Africa, Vietnam, Nepal and Fiji;
 - vii. Unemployment levels varied widely but were generally higher than that in NSW;
 - viii. While, in NSW, 36% of the workforce reported professional or manager as their occupational status, in the SLAs, the equivalent percentages were between 20 and 45% with most being below the NSW figure;
 - ix. Conversely, in NSW, 8.7% reported being labourers but in the SLAs percentages ranged between 5 and 22% with the majority of SLAs having levels above NSW's; and
 - x. In 18 of the 40 SLAs, median weekly personal incomes were above the NSW median of \$561 but in only two SLAs were the median weekly family incomes above the NSW figure of \$1477 while median weekly household incomes in 20 SLAs were above the NSW figure of \$1237.
- 6.8 In terms of the SEIFA Index of Relative Social and Economic Advantage and Disadvantage (IRSAD), the bulk of the SLAs making up the local community at the 2011 Census scored in the range between 900 to 1000. Three had IRSAD below 900 and 12 had IRSAD above 1000. The latter were clustered northeast of the Pub in the areas where there has been extensive redevelopment in recent and included the SLA in which the Pub is located.
- 6.9 In terms of IRSAD expressed as deciles, six SLAs ranked in the second; 10 in the third, 13 in the fourth, nine in the fifth, seven in the sixth and two in the seventh. (By way of explanation, places ranked in the first decile have the highest level of social and economic advantage and are associated with areas of high income, good public amenities and housing

and are said to enjoy a high quality of life whereas places in the tenth decile are those with the lowest incomes, poor amenities, housing and living conditions.) If the fifth decile is accepted as the median across NSW, the SEIFA of the SLAs indicate that the resident population of the local community was, when looked at as a whole, about, or slightly above, the State median level in terms of its socio-economic characteristics.

7.0 COMPETITIVE FACILITIES

- 7.1 There are a considerable number of hotels in, or on the fringes of, the Parramatta City Centre, most of which have gaming machines. There also a number of registered clubs in the same area which keep, in total, more gaming machines than all of those hotels.
- 7.2 In recent years, three hotels in, or on the fringes of, the Parramatta City Centre have been granted increases in their GMTs, the total increase being 29 entitlements.
- 7.3 The City of Parramatta (*the City*) extends far beyond the City Centre, spreading east to Ermington, Eastwood and Epping along the northern side of the Parramatta River; northwest to include much of Winston Hills; and south to include Granville and part of Guilford. At the same time, other local government areas extend quite close to the City Centre on the north and southwest. Near the Pub, the boundary between the City and the City of Holroyd lies only about a kilometre to the west, and about 500 metres to the south, of the Pub while the City of Auburn extends to within about 2 kms of it to the southeast.
- 7.3 The City covers 61 sqkm and, in 2011, the Census recorded its resident population as 166,858. The City of Holroyd covers 40 sqkms and its population was recorded as 99,163 while the City of Auburn had a population of 73,738 and covered 32 sqkm.
- 7.4 The numbers of gaming machines in 2013 were 2,050 in the City and 1,465 in the City of Holroyd. No data is available for the City of Auburn alone, its results being combined with those of the Strathfield Local Government Area.

8.0 COMMUNITY BENEFIT

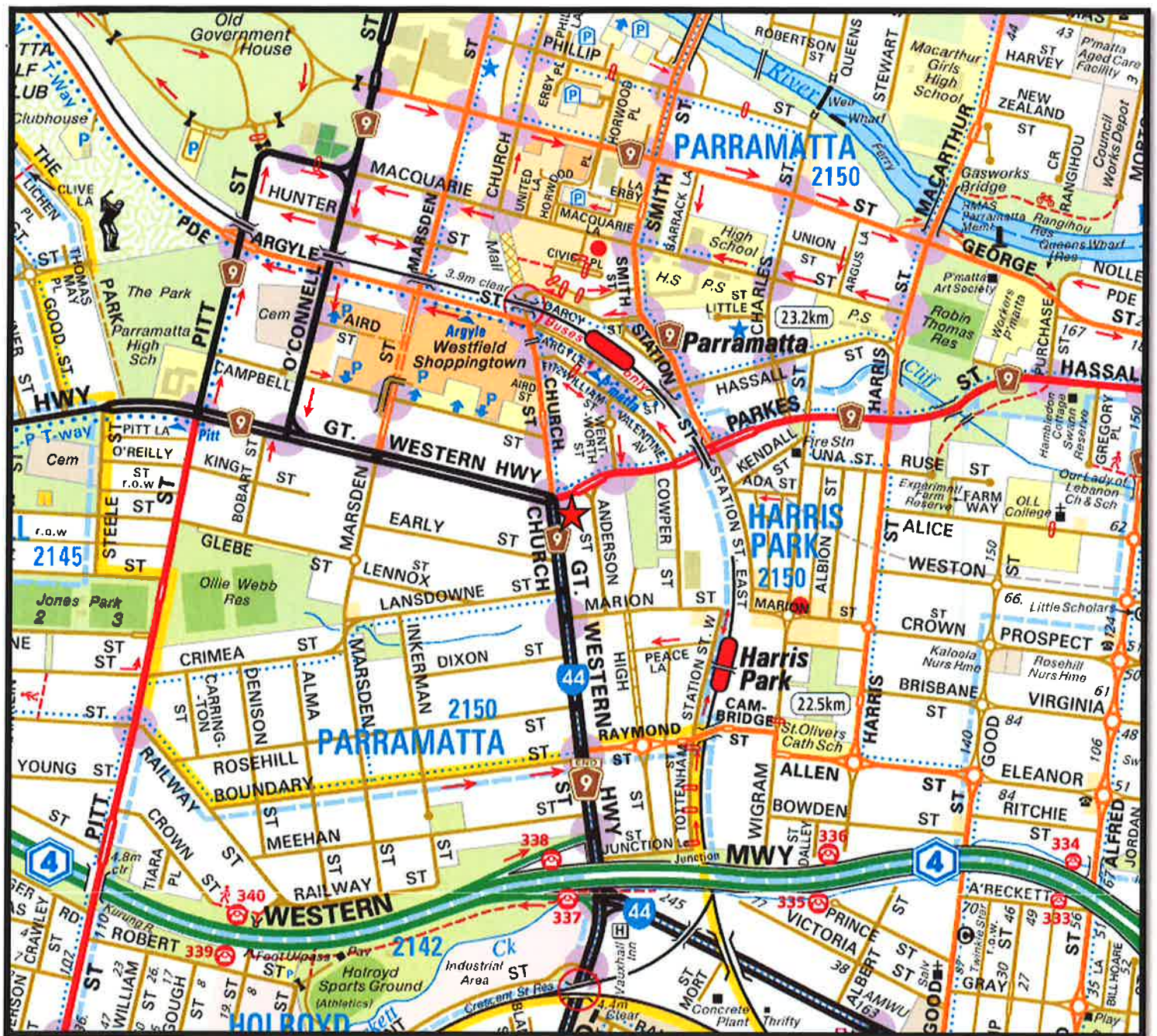
- 8.1 If the application is approved in full, or in part, the applicant will arrange for equal donations to be made to the Children's Hospital Westmead and the PCYC Parramatta on the basis of \$5,000 for each unit increase in GMT granted, up to a maximum of \$25,000. **Annexure 3** contains copies of correspondence between DC and those organisations regarding these donations indicating their willingness to accept the applicant's offer.
- 8.2 The applicant selected these two organisations as recipients because the Hospital provides care for children affected, directly or indirectly, by alcohol and gaming problems in their families through its Child Protection Unit (which always needs more funding to cope with demand and to improve its services) and because the PCYC is actively engaged with local youth, providing leadership and role models which are beneficial to the community.
- 8.3 These donations would be in addition to the regular donations which the licensee and the owner of the Pub make to various charity, community and sporting organisations.
- 8.4 In addition to these donations, the income which the additional machines which could be kept in the Pub if the application is granted would assist the applicant and owner to continue to improve the Pub and would also contribute to the State's revenue.

9.0 CONSULTATION

- 9.1 In accordance with Clause 39 of the Regulation, within two working days of the application being lodged with the Office of Liquor, Gaming and Racing (*OLGR*), copies of the application and this LIA will be provided to the Parramatta City Council and to the Police in Parramatta. Notification of the application will also be provided to the Council of Social Services of NSW and the Western Sydney Area Health Service as required by the legislation.
- 9.2 Eleven organisations funded by the Responsible Gambling Fund for the purpose of providing gambling-related counselling or treatment services will be notified of the application together with five which are apparently not so funded. The latter will be included because they are based in the City Centre. Those not in the City will be notified on the basis that they serve Western Sydney generally, thereby covering the broader community from which the Pub draws its trade, or serve specific ethnic groups. In addition, an advertisement will be placed in a local newspaper and a notice will be posted on the outside of the Pub.
- 9.3 All notifications and the advertisement will outline and explain the nature of the application that this LIA accompanies, that the application and this LIA may be inspected on the OLGR website and that any person may make a submission to OLGR in relation to the application within 30 days of the date specified on the advertisement or in the notice.
- 9.4 If OLGR forwards any submissions it may receive as a result of that consultation to DC or the applicant, any issues raised will be addressed.

10.0 CONCLUSIONS

- 10.1 This LIA complies with the relevant provisions of the Act and the Regulation. It demonstrates that the gambling activities of the Pub are, and will be, conducted in a responsible manner.
- 10.2 As set out in Section 8 above, the proposed increase in the Pub's GMT will provide a positive contribution towards the local community.
- 10.3 Measures required for public consultation on the application will be undertaken, as required by the Regulation, when the application is lodged. Any matters raised in that process, which are subsequently referred to the applicant, will be addressed as far as is reasonably possible.



Source: Extract from E-Way v2.00, Ausway 2012

Not to scale



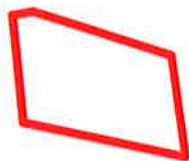
The subject site

PLAN 130293/1



Source: Extract from Google Earth, Sinclair Knight Merz 2012

Not to scale



The subject site



Source: Extract from Google Earth, Sinclair Knight Merz 2012

Not to scale



The subject site



The local community

PLAN 130293/3



Floor Area: 1050.01sqm



Gaming Room



Advertisement: *As part of our ongoing commitment to the community, we are pleased to announce that we will be donating a portion of our profits to the local food bank. We hope this helps support those in need.*

C1	18.04.11	FOR CONSTRUCTION	B4	JR
C2	26.04.12	FURNITURE CODE REVISION	B4	JR
C3	11.05.12	FOR CONSTRUCTION	B4	JR

PJ'S IRISH PUB
74 CHURCH ST PARRAMATTA

[illegible]

CHURCH STREET

Floor Area: 156.38sqm



- [illegible]

WALL TYPES

12

- [illegible]

As a result, you are not receiving the full value of your investment. You are also paying more for the same product.

C1 23.04.12 CONSTRUCTION ISSUE

[illegible]

Case No.	Age	Sex	Occupation	Duration of Illness	Chief Complaint	Physical Examination	Investigations	Treatment	Outcome
1	25	Male	Student	10 days	Headache, fever, cough	Normal	Normal	Supportive	Recovered
2	30	Female	Teacher	15 days	Headache, fever, cough	Normal	Normal	Supportive	Recovered
3	35	Male	Engineer	20 days	Headache, fever, cough	Normal	Normal	Supportive	Recovered
4	40	Female	Homemaker	25 days	Headache, fever, cough	Normal	Normal	Supportive	Recovered
5	45	Male	Businessman	30 days	Headache, fever, cough	Normal	Normal	Supportive	Recovered
6	50	Female	Retired	35 days	Headache, fever, cough	Normal	Normal	Supportive	Recovered
7	55	Male	Farmer	40 days	Headache, fever, cough	Normal	Normal	Supportive	Recovered
8	60	Female	Homemaker	45 days	Headache, fever, cough	Normal	Normal	Supportive	Recovered
9	65	Male	Retired	50 days	Headache, fever, cough	Normal	Normal	Supportive	Recovered
10	70	Female	Homemaker	55 days	Headache, fever, cough	Normal	Normal	Supportive	Recovered

THE IRISH PUB
74 CHURCH ST. APPRAMATTA

20 JUNE 2011 1:100

1000

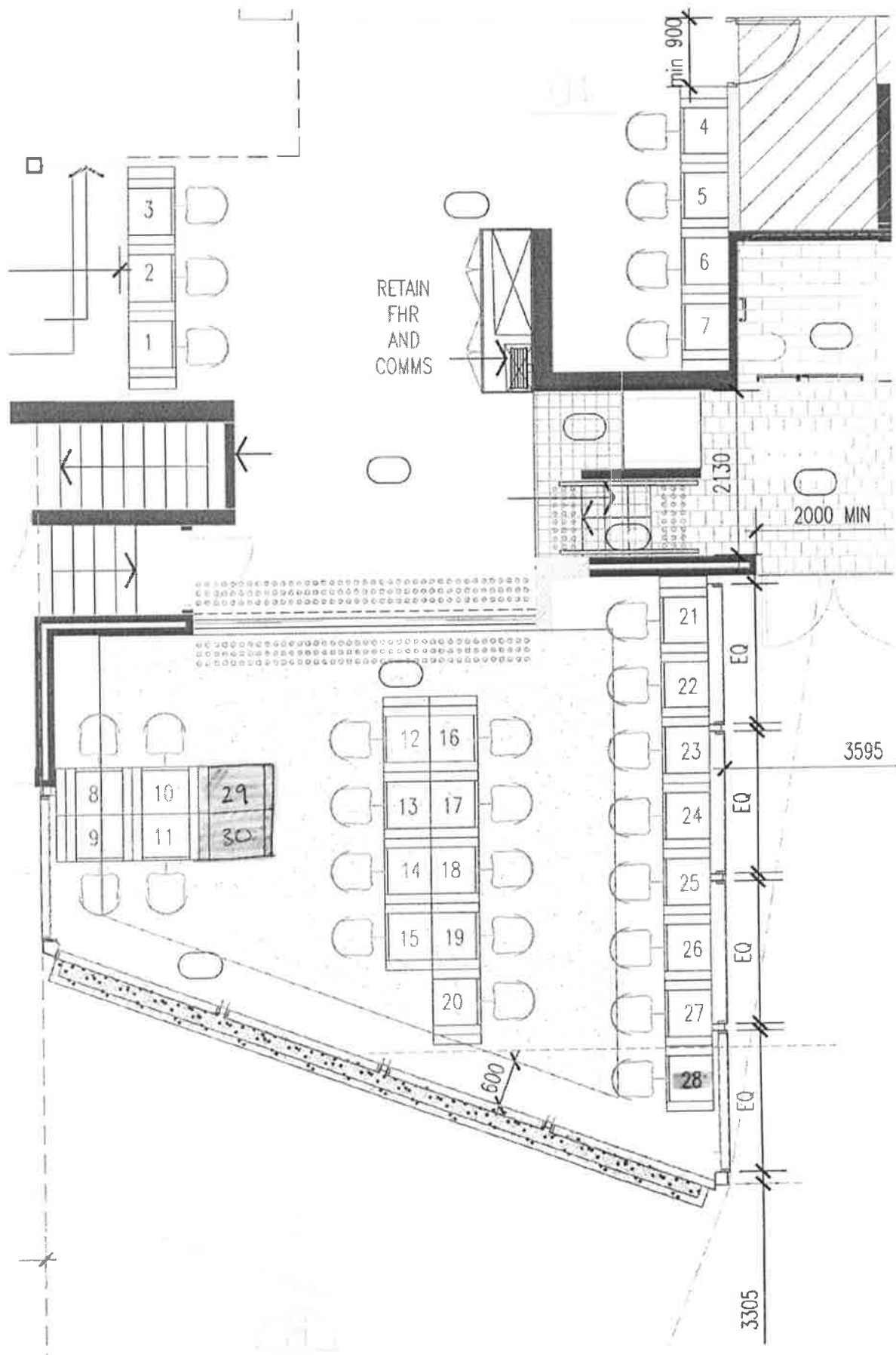
FIRST FLOOR FURNITURE PLAN

85467 WD 103
JUN 24 1964
DUNSMITH
E-1

23

[illegible]

ANNEXURE 2





DESIGN COLLABORATIVE Pty Limited

ABN 36 002 126 954
ACN 002 126 954

Planning and Development Consultants

www.designcollaborative.com.au

G W Smith
BSurv(QLD)
MCP(MIT)
MIS FPIA
MRTPI FAPI

H M Sanders
MPhil(Lon)
MSc(Rdg)
FPIA MRTPI
MRICS

J Lidis
BTP (UNSW)
MPIA CPP

11 December 2013

Ref: 130293.1L

The Director
Children's Hospital at Westmead
Locked Bag 4001
Westmead NSW 2145

Dear Sir / Madam,

Re: Proposed donation to the Hospital

We act for Mr. Paul Devine, the licensee of PJ's Irish Pub Parramatta, who is preparing to apply to the Independent Liquor and Gaming Authority for an increase in the gaming machine threshold of that hotel. We expect the application to be lodged early in 2014 and to be determined before the middle of the year.

The Gaming Machines Act requires that our client demonstrate to the Authority that there will be a 'positive contribution towards the local community' if the application is granted. To that end, our client proposes making a cash donation to local organisations involved in welfare activities around Parramatta. He has nominated the Children's Hospital as one potential beneficiary.

The purpose of this letter is to determine whether or not the Hospital would accept his donation which would be made after the Authority grants his application. At this time, we do not know the quantum of any donation but anticipate it is likely to be in the order of \$10,000 to \$15,000.

We understand that the Hospital has received other donations made in similar circumstances with the Authority requiring them to be directed to treatment of young people in the community affected by alcohol or the like abuse. Our client expects his donation to be similarly prescribed.

We would appreciate your advice on whether or not the Hospital would accept our client's donation.

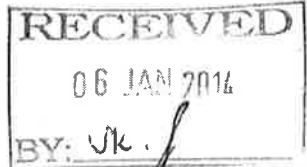
Yours faithfully,
DESIGN COLLABORATIVE PTY LTD

G W Smith
Director



The Sydney
children's
Hospitals Network

care, advocacy, research, education



Trim ref: SCHN13/15052

G W Simth
Design Collaborative Pty Limited
Level 3
225 Clarence Street
SYDNEY NSW 2000

Dear Mr Smith

Thank you for your letter dated 11 December 2013 regarding PJ's Irish Pub and the application for additional gaming machines.

The Children's Hospital at Westmead receives support from a number of licenced pubs and clubs with gaming machine licences. These donations support a number of activities across the hospital. The Sydney Children's Hospitals Network would accept a donation from PJ's Irish Pub and recommend it supports the Child Protection Unit in view of your desire to support those affected by alcohol.

If you would like to discuss further please contact Ms Gilly Paxton, Director Community Relations & Marketing on 9845 2569.

Yours sincerely

Elizabeth Koff
Chief Executive

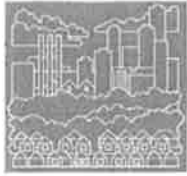
Date:

Locked Bag 4001
Westmead NSW 2145
Sydney Australia

ABN 53 188 579 090

Tel 61 2 9845 0000
Fax 61 2 9845 3489
www.schn.health.nsw.gov.au

DX 8213 Parramatta



DESIGN COLLABORATIVE Pty Limited

ABN 36 002 126 954
ACN 002 126 954

Planning and Development Consultants

www.designcollaborative.com.au

G W Smith
BSurv(QLD)
MCP(MIT)
MIS FPIA
MRTPI FAPI

H M Sanders
MPhil(Lon)
MSc(Rdg)
FPIA MRTPI
MRICS

J Lidis
BTP (UNSW)
MPIA CPP

11 December 2013

Ref: 130293.2L

Parramatta PCYC
12 Hassall Street
Parramatta NSW 2150

Dear Ms Banks,

Re: Proposed donation to the PCYC

We act for Mr. Paul Devine, the licensee of PJ's Irish Pub Parramatta, who is preparing to apply to the Independent Liquor and Gaming Authority for an increase in the gaming machine threshold of that hotel. We expect the application to be lodged early in 2014 and to be determined before the middle of the year.

The Gaming Machines Act requires that our client demonstrate to the Authority that there will be a 'positive contribution towards the local community' if the application is granted. To that end, our client proposes making a cash donation to local organisations involved in welfare activities around Parramatta. He has nominated the PCYC as one potential beneficiary.

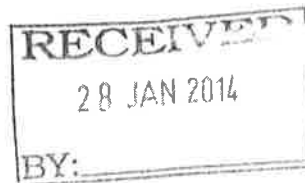
The purpose of this letter is to determine whether or not the PCYC would accept this donation which would be made after the Authority grants his application. At this time, we do not know the quantum of any donation but anticipate it is likely to be in the order of \$10,000 to \$15,000.

We understand that the PCYC has received other donations made in similar circumstances with the Authority requiring them to be directed to treatment of young people in the community affected by alcohol or the like abuse. Our client expects his donation to be similarly prescribed.

We would appreciate your advice on whether or not the PCYC would accept our client's donation.

Yours faithfully,
DESIGN COLLABORATIVE PTY LTD

G W Smith
Director



<i>A.</i>	<i>X</i>
	H.M.S.
<i>f</i>	C.V.S.



Attention: G W Smith
Design Collaborative P/L
Level 3 225 Clarence Street
SYDNEY NSW 2000

Jeannie Banks
12 Hassall Street
PARRAMATTA 2153

21st January 2014

Dear Mr Smith

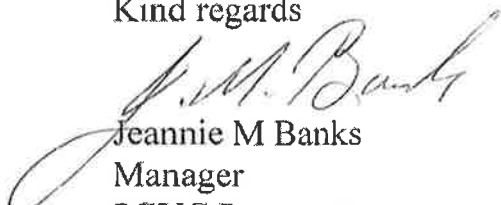
I am pleased to advise that our State Office has approved this proposed donation.

I would very much like to personally thank your client Mr Paul Devine, the licensee of PJ's Irish Pub Parramatta for nominating our organization as a potential beneficiary.

Should you require further information I can be contacted on 02 9635 8242 or 0437 972 916.

Again, many thanks for your proposal.

Kind regards


Jeannie M Banks
Manager
PCYC Parramatta.