

Appendix 1

ClubSafe Responsible Conduct of Gambling Policy

Prepared by:



© Lawler Partners HGM Pty Ltd 2009. Reproduction or copy of this document, or part thereof is prohibited except as where expressly permitted under the Copyright Act 1968 or where written permission is provided from Lawler Partners HGM Pty Ltd.

IMPORTANT NOTICE

Machine Playing Conditions



These Conditions regulate and limit the rights and obligations of anyone who plays a gaming machine in the Club. You should read them before playing any machine. Do not play any machine if you do not understand and accept all of these Conditions.

1. No patron is required to participate. Any playing of machines is at your sole option, discretion and risk.
2. Player information brochures are available. Please ask if you would like to know how to get one. Player brochures are for general information only and if there is any inconsistency with these Conditions, then to the extent of the inconsistency these conditions prevail.
3. You should not play any machine unless you completely understand -
 - (a) how you have to play it, and
 - (b) the combinations that you would have to get to win a prize.
4. If you disagree with anything done by the Club in connection with a prize or the playing of a machine, please ask about the Club's complaint handling procedures.
5. Machines must not be played by anyone under the age of 18 years.
6. These Conditions cannot be varied for you personally except by a document that sets out the change(s), expressly refers to these Conditions and is signed by an authorised Club officer.
7. These Conditions apply even where there are separate conditions stipulated for a particular machine or promotion or prize, except only where (and to the extent that) the Club expressly states in writing that it is amending these Conditions.
8. Payment may be withheld and the Police called if in the Club's opinion a machine or the circumstances show any sign of use of or interference with the machine which is unlawful or in breach of these Conditions or the Club has any reasonable suspicion of play in breach of these Conditions or which is otherwise improper.
9. A prize or purported prize will not be paid or awarded where in the Club's reasonable opinion it arises as a result of a machine malfunction; or as a result of any aspect of the operation, working, use or performance of the machine that was not intended or not reasonably anticipated by the Club (even if that aspect of the operation, working, use or performance of the machine was otherwise predictable); or (without limiting the previous general words), where the winning combination showing has not been registered in the machine. The Club's decision is final.
10. Various legal requirements binding on the Club in some circumstances are mandatory and cannot be varied. If any such requirement is inconsistent with these Conditions then the legal requirement prevails but only to the extent of the inconsistency.
11. You must not play any machine which the Club has marked as malfunctioning or otherwise in some way marked or indicated as withdrawn from play. The Club will not pay any prize won on any such machine.
12. At any time when requested by the Club a player must provide their full name and address plus details of the basis on which they are on the Club's premises, with such documentary proof as the Club reasonably requires. The Club may prevent you from playing or continuing to play any machine if you do not satisfactorily comply with this requirement.
13. Club employees and former employees, and contractors and suppliers to the Club (and their officers and staff) must observe all relevant restrictions imposed by the Club from time to time regarding such persons. Without limiting those general words, an employee must not play machines whilst on duty nor during meal or rest periods or other breaks from duty. Prizes won by an employee or former employee, or by a contractor or supplier (or one of their officers or staff) when playing a machine in breach of this Condition, will not be awarded or paid.
14. Only coins and notes of Australian legal tender are to be used to play gaming machines and that must be in accordance with the particular requirements of any particular machine as noted on that machine.
15. You may reserve not more than one machine at a time and then for a maximum of 15 minutes. However, the Club may in any particular case decide in its discretion not to allow a machine reservation to continue. The Club has no liability to you if you reserve a machine but for any reason that machine is played by some other person. The Club may in its discretion but without limiting the other provisions of this condition, allow particular types of players to reserve more than one machine or to reserve a machine for a longer period.
16. The Club may reserve any number of machines for the exclusive use of full members or for a particular promotion or activity. If you are not entitled to play a machine under any such particular arrangement then you are not entitled to claim any prize won on the machine whilst it is so reserved.
17. A prize will not be paid unless the winning combination is seen by an authorised staff member of the Club and verified for payment according to the Club's standard procedure for paying prizes.
18. A prize will not be paid if it is won before the opening time of the Club, or after the announced closing time of the Club.
19. The Club has the right to ensure that every prize, short pay and machine refill is played off.
20. The Club may refuse any person the right to play or to continue to play a gaming machine in its discretion at any time without giving any reason.
21. You must immediately report to an authorised Club staff member, any machine that is able to be operated without using the correct legal tender or without reducing the credit meter by an appropriate amount or that is malfunctioning in any other way, and you must stop playing that machine.
22. You must also immediately report to an authorised Club staff member, any machine that overpays or pays other than the correct amount for a winning combination, and you must stop playing that machine.
23. Any property, including money, left by players in or on an unattended machine must be reported and returned to the Club for appropriate action.
24. If you do not report a malfunction as required then you may be liable to the Club for damages suffered by the Club as a result.
25. You must not tilt, rock, move damage or interfere with a machine or do anything calculated or likely to interfere with the normal operation of a machine, or do anything prohibited by law.
26. Cheating in relation to a machine is a very serious criminal offence carrying a maximum penalty of \$11,000.00 or imprisonment for 12 months, or both, for each offence.
27. Prizes are not payable to any player, and may not be claimed by any person, who is under the age of 18 years or who is not either a financial member, provisional member, temporary member or honorary member, or a bona fide guest of a member and on the premises in compliance with all requirements of the law and the Club's Constitution and playing the machine in the reasonable company of the member concerned.
28. Prizes or accumulated credits over \$2,000.00 will, and prizes of less than that amount may be paid by crossed cheque payable to the prizewinner, or by EFT where that is requested by the prizewinner and those means are available to the Club.
29. Monetary prizes and stored or accumulated credits will be paid within 48 hours of a request for payment from the prizewinner. The Club in its discretion may pay part of a prize or of a stored or accumulated credits, in advance of paying the balance.
30. A prize may be awarded in a non-monetary form. Where a prize is awarded in a non-monetary form there is no option to take the prize in any other non-monetary form except as the Club may have separately specified in writing for any particular machine or promotion. The prizewinner does have the choice of being paid instead. The prize will be awarded as stated in the Club's published information, or if no time has been specified then within 48 hours of a request from the prizewinner.
31. Where a prize is not awarded or paid immediately after the prizewinner has requested it, the Club will give the prizewinner a written acknowledgment of the prizewinner's entitlement to the prize.
32. For a monetary prize, the Club will pay the prizewinner an amount equal to but not exceeding the value of the credits accumulated by the prizewinner from playing the relevant machine.
33. Except as specified by the Club in writing or by legislation for any particular machine or promotion, all prizes are paid in cash. The Club keeps certain records in relation to machines and prizes. Players must cooperate with the Club regarding the keeping of those records.
34. If the Club offers any machine which is operated as part of an inter-club linked gaming system (no matter what that system is named) then -
 - (a) to the maximum extent permitted by law, progressive jackpots (and other similar prizes) are payable by TAB limited or other operator of the linked gaming system alone and the Club has no liability to pay, and gives no representation or warranty concerning, any such jackpot, prize or other benefit offered by that operator;
 - (b) any other specific Conditions applicable to the relevant linked gaming system, including those notified by the operator of the linked gaming system, apply. If there is any inconsistency, then as between you and the Club (except as any other Conditions promulgated by the Club may expressly provide) these Conditions prevail to the extent of the inconsistency to maximum extent permissible at law;
 - (c) the Club may if it chooses act as the representative or agent of the linked gaming system operator eg. to facilitate payment of a progressive jackpot or prize. However, that does not waive or affect these conditions all of which continue to apply.
35. The Club may immediately withdraw a machine or any progressive system from play if the Club in its absolute discretion suspects a malfunction. If the machine is of a progressive type then the Club will have the machine repaired as soon as practicable.
36. Only the actual prizewinner may claim or receive payment of a prize. They must do so in person at the club's premises. The Club may in its absolute discretion waive this condition.
37. If the Club in good faith pays or awards a prize to someone appearing to the club to be or to duly represent the prizewinner, then the maximum extent permitted by law that payment or award fully discharges the club from all liability to the prizewinner in relation to that prize.
38. If the Club provides any gaming machine ticket (as defined in the Gaming Machine Regulation 2002 as may be amended from time to time) then -
 - (a) The ticket may only be redeemed at the place or places at the Club's premises which are designated by the Club.
 - (b) The ticket may be redeemed at the Club's election in cash or by cheque or both.
 - (c) The Club may refuse to redeem the ticket if the Club is not satisfied that the person claiming in respect of the ticket or if that person does not provide documentary proof of identity and their signature and provide and let the Club take from that documentary proof of identity the following information - their full name and address; the identifying numbers or letters of the document proving their identity; and the full name, address and signature of the person claiming in respect of the ticket (if different to the person presenting the ticket).
 - (d) Claims may be made for unclaimed tickets at any time when the Club is open for trading.
39. The Club may still publish information relating to the type or value of any prize won and the venue or geographic location where it was won, even if the prizewinner requests in writing that nothing disclosing the prizewinner's identity be published.
40. By accepting or redeeming a prize, a prizewinner consents to use of their name and likeness for marketing purposes (until they request the Club in writing given to the Club or an employee of the Club that anything disclosing their identity not be published), based on the winning of the prize and without additional compensation.
41. Nothing in these Conditions affects anything contained in any self-exclusion deed which you may sign. The Club is entitled to rely on every provision in any self-exclusion deed signed by you (whether or not the deed is titled as a self-exclusion deed), despite anything in these Conditions.
42. Any other specific Conditions applicable to any particular machine, promotion or prize apply. If there is any inconsistency, then (except as those other conditions may expressly provide) these Conditions prevail to the extent of the inconsistency.
43. A member who breaches any of these Conditions is liable to disciplinary action by the Club in addition to any disqualification from claiming a prize and any other lawful penalty.
44. The Club may withdraw or amend these Conditions at any time in its absolute discretion. Any change becomes operative immediately it is displayed anywhere at the Club.

IS GAMBLING A PROBLEM FOR YOU?
G-LINE (NSW) IS A CONFIDENTIAL, ANONYMOUS & FREE COUNSELLING SERVICE
FREE CALL 1800 633 635



www.allpride.com.au

Appendix 2

LGA Map

Prepared by:



© Lawler Partners HGM Pty Ltd 2009.
Reproduction or copy of this document, or part thereof is prohibited except as where expressly permitted under the Copyright Act 1968 or where written permission is provided from Lawler Partners HGM Pty Ltd.



Appendix 3

Local Community Map

Prepared by:



© Lawler Partners HGM Pty Ltd 2009.
Reproduction or copy of this document, or part thereof is prohibited except as where expressly permitted under the Copyright Act 1968 or where written permission is provided from Lawler Partners HGM Pty Ltd.

Lawler Partners
5km Radius: 11 Renown Rd, Baulkham Hills



Appendix 4

Construction related positive contributions

Prepared by:



© Lawler Partners HGM Pty Ltd 2009.
Reproduction or copy of this document, or
part thereof is prohibited except as where
expressly permitted under the Copyright Act
1968 or where written permission is provided
from Lawler Partners HGM Pty Ltd.

Construction related positive contributions

Preliminary estimates obtained by the Applicant for the redevelopment of the Venue, is \$8 million. Applying input-output tables from the National Accounts (based on 1996-1997 data), the following economic effects may be expected from a project of this scale: every \$1 million worth of output in the commercial construction industry results in the creation of 6 direct FTE positions and 17 FTE positions across the economy as a whole, due to the initial, first round, industrial support, production induced, and consumption induced multiplier effects. These effects and the relevant output and employment multipliers underpinning the estimates are tabulated below:

Table 1: Commercial/Industrial Construction Industry Multipliers

Impact	Initial Effect s (1)	First Round Effect s (2)	Industri al Support Effects (3)	Productio n Induced Effects (4 = 2+3)	Consumptio n Induced Effects (5)	Total Multiplie r (6=1+4+5)
Output (\$m)	1.000	0.456	0.425	0.881	0.915	2.796
Employme nt (no.)	6	3	2	5	6	17

Applied to the total cost of construction of \$8 million for the Applicant's proposed development, the project would be expected to generate \$22.4 million of economic activity and 136 full time equivalent jobs during the construction period. The total number of additional persons employed may in fact be higher, as some of the positions created may not be on a full time basis, and thus would account for only the relevant proportion of one FTE position.

If it was conservatively assumed that 40% of the additional economic activity and employment was to directly positive contribution the local economy, an injection of \$8.96 million would result. It is recognised that this is a short term economic stimulus, but of such magnitude that its significance should be taken into consideration, in this local economy. Even if the effect were to be considered over a number of years beyond the construction period, the overall effect remains significant.

Appendix 5

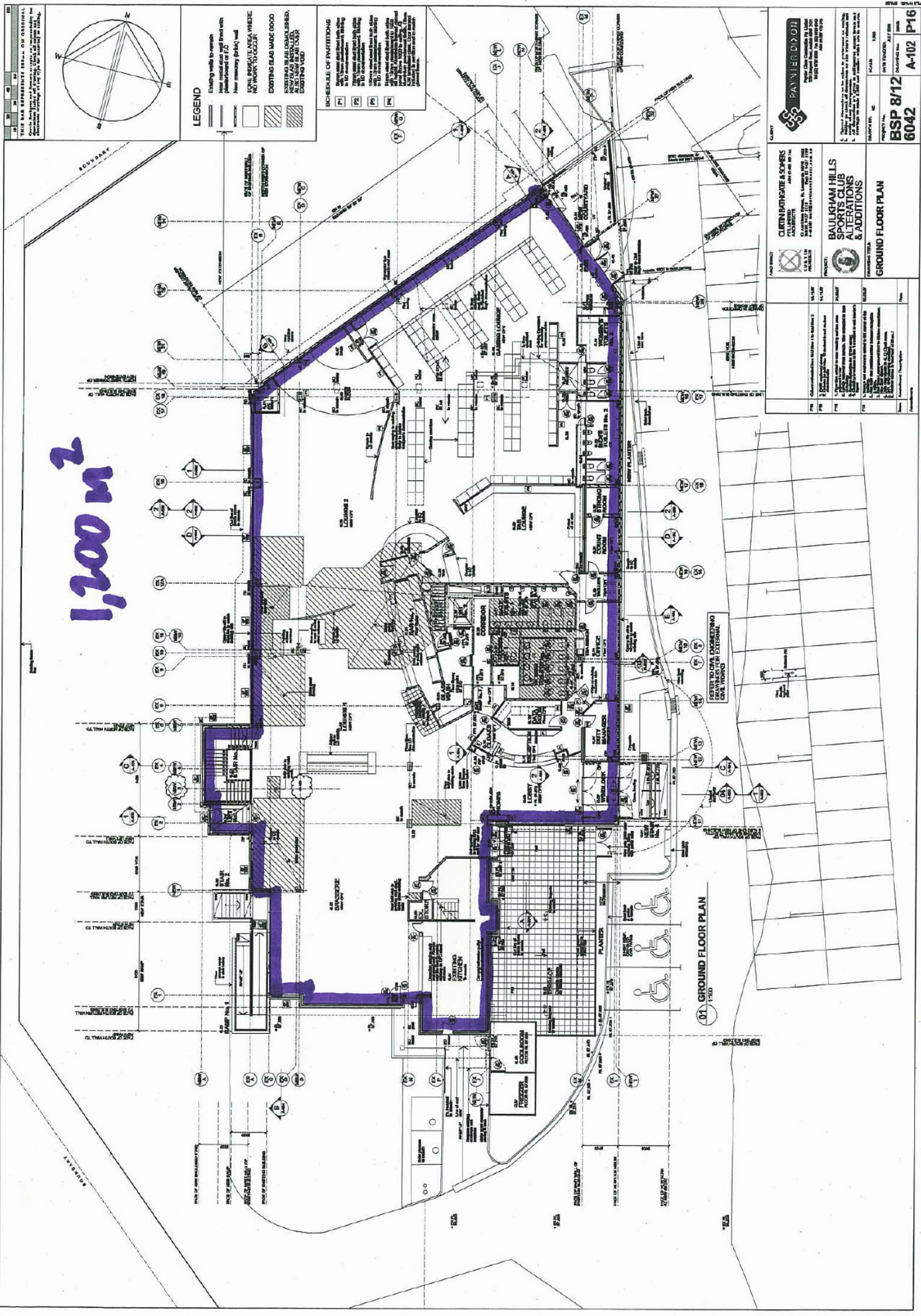
Plans of premises

Prepared by:



© Lawler Partners HGM Pty Ltd 2009.
Reproduction or copy of this document, or
part thereof is prohibited except as where
expressly permitted under the Copyright Act
1968 or where written permission is
provided from Lawler Partners HGM Pty Ltd.

1,200 m²



LEGEND

- Existing walls to remain
- New internal wall and floor with plasterboard or 7.5
- New masonry (block) wall
- Roof internal area where no work to occur
- Existing glass made good
- Existing glass replaced, new glass to be fitted
- Existing roof to remain

SCHEDULE OF PARTITIONS

- Partitions and doors to remain
- Partitions and doors to be replaced
- Partitions and doors to be added
- Partitions and doors to be removed
- Partitions and doors to be altered
- Partitions and doors to be repaired
- Partitions and doors to be painted
- Partitions and doors to be cleaned
- Partitions and doors to be polished
- Partitions and doors to be oiled
- Partitions and doors to be waxed
- Partitions and doors to be varnished
- Partitions and doors to be stained
- Partitions and doors to be dyed
- Partitions and doors to be bleached
- Partitions and doors to be whitened
- Partitions and doors to be discolored
- Partitions and doors to be aged
- Partitions and doors to be weathered
- Partitions and doors to be distressed
- Partitions and doors to be antiqued
- Partitions and doors to be patinated
- Partitions and doors to be lacquered
- Partitions and doors to be enameled
- Partitions and doors to be painted
- Partitions and doors to be stained
- Partitions and doors to be dyed
- Partitions and doors to be bleached
- Partitions and doors to be whitened
- Partitions and doors to be discolored
- Partitions and doors to be aged
- Partitions and doors to be weathered
- Partitions and doors to be distressed
- Partitions and doors to be antiqued
- Partitions and doors to be patinated
- Partitions and doors to be lacquered
- Partitions and doors to be enameled



CLINT BATHURST & SONS
ARCHITECTS
100/102 BATHURST STREET
SYDNEY NSW 2000
TEL: (02) 9550 1234
FAX: (02) 9550 1235
WWW.CLINTBATHURST.COM.AU

Baulkham Hills Sports Club Alterations & Additions
PROJECT
CLINT BATHURST & SONS
ARCHITECTS
100/102 BATHURST STREET
SYDNEY NSW 2000
TEL: (02) 9550 1234
FAX: (02) 9550 1235
WWW.CLINTBATHURST.COM.AU

GROUND FLOOR PLAN
DRAWN BY: [Name]
CHECKED BY: [Name]
DATE: [Date]

Appendix 6

The Community Foundation of North Western Sydney

Prepared by:



© Lawler Partners HGM Pty Ltd 2009.
Reproduction or copy of this document, or
part thereof is prohibited except as where
expressly permitted under the Copyright Act
1968 or where written permission is
provided from Lawler Partners HGM Pty Ltd.



Community Foundation of North Western Sydney Pty Ltd
PO Box 1204, Baulkham Hills, NSW 1755
ABN: 55124482864

Patron:

Alan Overton AM

Inaugural Ambassador:

Sonya Phillips

Directors:

Geoff Green (Chairman)

David Barnett

Bill Dixon

Ray Whiteman

Donors



- The Hills Club
- Elkie Photography
- Office National
- Coffee Club Rouse Hill
- Donato Holdings

31 July 2009

The Club Executive

Bankstown Sports

PO Box 213

Bankstown, NSW 1885

Attention Christopher Passanah

Application for Funding

Dear Chris

Thank you for inviting the Community Foundation of North Western Sydney to apply for funding from Bankstown Sports.

We had a Board meeting on Wednesday 29 July at which the directors unanimously voted to submit this application to assist in funding our programmes to provide *supplementary crisis support* to the disadvantaged in the Hills Shire. We also discussed the fact that part of the funding will come from gambling machine profits. If successful with this application we have no issue in utilising this money to improve the lives of disadvantaged residents in the Hills area.

Introduction

The Community Foundation of North Western Sydney was launched in August 2008 at the Baulkham Hills Mayoral Ball. It is currently a wholly owned subsidiary of *The Hills Community Aid and Information Service Inc* which has served the people of the Hills District of Sydney, New South Wales since 1968.

The Foundation was established in response to increasing disadvantage in the North Western Region of Sydney, taking in the local government areas of Baulkham Hills, Blacktown, Hawkesbury, Hornsby, and Parramatta.

The Foundation has been set up as a Public Benevolent Institution which has been approved by the Australian Taxation Office to operate with *Deductible Gift Recipient (DGR)* and *Tax Charity Concession (TCC)* status.

Phone: 02 9639 8620
 Fax: 02 9686 3100
 Email: mcom1@hca.org.au
 Web: www.cfaws.org.au



Community Foundation of North Western Sydney Pty Ltd
PO Box 1204, Baulkham Hills, NSW 1755
ABN: 55124482864

The Project – “Bridging the Gap in the Hills”

Statistically, the Hills Shire LGA is viewed as a comparatively well off shire with 78% (2006 statistics) of families earning above the average wage. Unfortunately, there are still up to 22% of the residents in the Hills who need help. In addition, the economic downturn has resulted in redundancies, and we are starting to see an increasing number of “middle income” families requiring support.

Fortunately, we live in a country where abject poverty is not tolerated and we have a social welfare system that provides for people in crisis. The Hills Community Aid and Information Service Inc administer a financial crisis relief programme on behalf of Centrelink. In addition, there are other highly professional providers that offer other support like emergency accommodation and crisis counselling.

As good as the social welfare system may be, it is limited by what funds are available – there is never enough! All of these programmes have guidelines and limits, so that there is sufficient money to ensure that clients have access to at least subsistence support. The problem is that once a client requires crisis support they find it difficult, and sometimes impossible, to become self sufficient.

The Foundation’s programmes are designed to provide supplementary support that gives the client the opportunity to move out of welfare dependency to one where they can return to full or partial self sufficiency. We offer supplementary funding, tailored to the individual’s need that is aimed at *bridging the gap* between subsistence dependency and full or partial self sufficiency. This support may be in various forms for instance

- Accommodation funding, e.g. homeless families or families under the threat of eviction
- Transport to enable access to work, training, etc
- Counselling – financial and trauma
- Medical
- Vocational training
- Crisis financial assistance

Managing the Project

The Community Foundation of North Western Sydney does not have the resources to provide client services; in fact, we are staffed almost entirely by volunteers. When we initiated the Foundation we decided that we would utilise existing professional resources in the region rather than duplicate them – a far more efficient and effective way forward, and will maximise the use of the donated monies.



Community Foundation of North Western Sydney Pty Ltd
PO Box 1204, Baulkham Hills, NSW 1755
ABN: 55124482864

We have so far invited three organisations in the Hills to work with us in identifying clients who would benefit from this programme; they are:

- The Hills Community Aid and Information Service Inc – financial emergency relief
- St Michaels – crisis family accommodation and support
- The Hills District Youth Service – youth homelessness and support

These organisations have a large client base and are enthusiastic to access funding from us that will help in achieving better outcomes for the people in the Hills area.

Each organisation will be able to make application to access the *bridging the gap finance* for clients that they believe will benefit from this programme. They will need to provide a plan and budget for each client, and we will decide on the level of funding on a case by case basis. Each organisation will provide a progress report for each client that we have funded so that we can evaluate the effectiveness of the programme.

Budget

This programme is designed to supplement existing welfare programmes which are already managed; therefore there will be minimal case management costs. The Foundation will control the programme so that the administration costs will not exceed 10%. In other words, at least 90% of the proposed \$40,000 donation from the Bankstown Sports will be spent directly on client needs.

We will report to Bankstown Sports on the programme progress, including financial status, on a quarterly basis, or as required by the Bankstown Sport Executive.

Attachments

Find attached

- The Foundation brochure
- Endorsement from the Taxation Dept as a “deductible gift recipient”
- Our ABN as listed on the Australian Business Register

Again, thank you for the opportunity to make application for funding and should you require further information please do not hesitate to contact the undersigned at any time (0434 159 459).

Geoff Green
Chairman, Foundation of North Western Sydney

Phone: 02 9639 8620
Fax: 02 9686 3100
Email: info@cfnws.org.au
Web: www.cfnws.org.au

TYPES OF SUPPORT

1 Become a Corporate Financial Sponsor of the Foundation

Sponsorships are for twelve months initially and can be renewed annually. All sponsors will be acknowledged on Foundation publications and in the Annual Report; the level of recognition will be tailored to the level of contribution.

Note - Donations are tax deductible

2 Become a Corporate Community Mentor

a) Employee Volunteer Programme

This programme provides the opportunity for employees in your organisation to become involved in community based activities and programmes. This programme is designed to introduce employees to the real needs in the community.

This has a dual benefit:

- i. The employee has the opportunity to assist the disadvantaged in the community
- ii. They experience the deep satisfaction of helping others; this may lead to them becoming a long-term volunteer that will greatly benefit them and the community.

b) Work Experience/Internship Programme

This programme enables businesses to take in someone who is disadvantaged, teach them new skills and provide them work experience.

This programme can have a dramatic impact on their self esteem, and may provide the business with new talent.

c) Mentorship Program

This programme enables professionals within the organisation to become a mentor to a disadvantaged youth. The mentor provides long term guidance and developmental support which can have a dramatic impact on that young person's career and social outlook.



To support the work of the Community Foundation of North Western Sydney please

pay by cheque or credit card:

The Community Foundation of North Western Sydney
PO Box 1204

Baulkham Hills NSW 1755

Phone 02 9639 8620

Email mcom1@hca.org.au



Proudly produced by



The COMMUNITY FOUNDATION of NORTH WESTERN SYDNEY

The Community Foundation of North Western Sydney is an independent, not for profit, charitable organisation that assists people in crisis, or those that are socially isolated living in the North-Western region of Sydney, New South Wales.

OUR MISSION

To facilitate:

1. Crisis accommodation for homeless families and youth.
2. Crisis relief, including access to
 - Crisis financial assistance
 - Trauma and financial counselling
 - A No Interest Loan scheme
3. Activities, programmes and transport for socially and physically isolated families, young people and the aged.

OUR HISTORY

The Community Foundation of North Western Sydney was formed in 2007. It is a wholly owned subsidiary of The Hills Community Aid and Information Service Inc

which has served the people of the Hills District of Sydney, New South Wales since 1968.

The Foundation was established in response to increasing disadvantage in the North Western Region of Sydney, taking in the local government areas of Baulkham Hills, Blacktown, Hawkesbury, Hornsby, and Parramatta.

The Foundation has been set up as a Public Benevolent Institution which has been approved by the Australian Taxation Office to operate with **Deductible Gift Recipient (DGR)** and **Tax Charity Concession (TCC)** status.



Growing Levels of Disadvantage

in a growing population

The North Western suburbs of Sydney are among the fastest growing in the state of New South Wales. At the 2006 Australian Census the Local Government Areas of Baulkham Hills, Blacktown, Parramatta, Hawkesbury, and Hornsby recorded a total population approaching one million, with a forecasted increase of 2.4% p.a. to 2021.

This rapidly growing population is bringing challenges through:

- Increasing urbanisation
- Diversity of cultures
- Ageing population and
- Increasingly disadvantaged families and youth.

What is the Foundation Doing?

1. Crisis Accommodation

The Foundation will assist families and youth who are homeless, or at risk of being homeless, by funding crisis accommodation.

We will work with existing services to increase their crisis accommodation capacity.

We will also provide direct funding through community based organisations in the region to enable them to provide immediate emergency accommodation for the homeless.

2. Crisis Relief

The Foundation will, on a case by case basis, provide funds for crisis relief to help families and individuals overcome their immediate hardships.

There are limited funds available to assist those without sufficient money to pay for the basics of life including: food, rent, electricity etc. There are many families and individuals who are so severely financially disadvantaged that the existing funds do little to improve their quality of life.

The Foundation will provide funds through community based organisations to enable them to access counselling and case management services on an urgent basis if required.

People in crisis often have significant trauma. While government funded counselling and case management services are available they have extended waiting times.

The Foundation will also support counselling services to assist clients to better manage their finances.



The Foundation will assist the No Interest Loan Scheme by providing funds to administer and promote this valuable service.

The No Interest Loan scheme assists low income earners to purchase essential household items and services, as well as assisting them in establishing a good credit rating.

3. Reduce Isolation

The Foundation will support existing, and new community based transport to enable isolated members of the community to access social activities, community interest meetings, and social education.



The Foundation will support the introduction of internet cafes in isolated areas.

This will provide both an innovative social venue for the area, and make available good internet facilities that many currently do not have access to.

The Foundation will support training in the safe use of the internet for young people, parents, and the aged, and will promote the use of modern internet and email technologies to reduce the effects of social and physical isolation.

The Foundation will support social and sporting activities in isolated areas

The Foundation will facilitate social interaction by supporting recreational learning, and wellbeing programmes throughout the region - especially in isolated areas.



WE NEED YOUR HELP

Become Involved in the Community Foundation of North Western Sydney

Benefits of Community Involvement for Businesses

Ethics and social responsibility are becoming increasingly important to both customers and investors, and businesses are increasingly scrutinised on their ability to do good, rather than just do well.

- Businesses benefit by building a better, more successful community in which it operates. A healthy community will create a healthier market to do business in and lead to higher profit margins.

- A good reputation makes it easier to recruit employees. Also, investment in disadvantaged people can provide opportunities for the growth of new talent (and therefore wealth) which would otherwise remain undiscovered and wasted. (i.e. -Tackling social issues is good for the bottom line.)

- Investors pay attention to the reputation of a business.

- Community involvement boosts networking opportunities.

- There is more opportunity for positive press coverage.

Good relations with local authorities make doing business easier. (For example, some local authorities prefer to award contracts to businesses with a record of community involvement.)