

## Local Impact Assessment Class 1 Application

### Bourke Bowling Club Limited – LOCAL IMPACT ASSESSMENT (CLASS 1)



Street View



Aerial View

### **EXECUTIVE SUMMARY**

- ❖ Bourke Bowling Club Limited...Licence # 235904, LGA Band 2, Class 1 Application.
- ❖ The Club Premises are located at the Corner of Richard Street & Mitchell Street Bourke, NSW 2840 incorporated in the Bourke Local Government Area (LGA) classified as Band 2 by the Casino, Liquor and Gaming Control Authority, as part of the Gaming Machines Amendment Act 2008 No 99. As such, a Class 1 Local Impact Assessment is submitted, requesting a poker machine threshold increase of 20 poker machines, which constitutes a low range increase according to this same Act.
- ❖ The Club currently holds 26 approved gaming machines at Bourke Bowling Club, thus an increase of 20 poker machines would bring this overall total to 46 .
- ❖ The potential net revenue before costs and State Taxes from the extra 20 poker machines is \$811,426 per year. However once all related expenses are taken into account this figure is estimated at \$595,206. (*Est. based on tax rates and poker machine expenses 2008, less GST, averaged for 20 additional Machines*)
- ❖ In view of a range of factors, the Club's profits have been steadily declining over the past few years. This will unfortunately result in a decline in CDSE contributions and thus can have a negative impact on the local community if the current situation does not improve.
- ❖ Positive outcomes for NSW and specifically the Bourke community are an expected increase in employment opportunities both directly and indirectly as a result. The Club's employment prospects may extend to an additional four positions, with the overall allocation of wages within the Club potentially increasing from the current \$751,194 pa up to \$1,329,036 pa, when the increased allocation is fully operational.
- ❖ The projected annual net profit from the 20 additional poker machines of \$35,968 per machine, would allow the Club to assist in maintaining its current affordable pricing levels.
- ❖ Most importantly, the Club would reasonably expect increases in its CDSE Category 1 spend by the exponential growth in Revenue and significantly, by a special allocation of \$15,000, being \$5,000 per annum for 3 Years. This amount, contributed above the Standard Contribution to the Category 1 Fund to allow for projects to be undertaken for the local community as per requests made direct to the club. (No CDSE Committee in Bourke)

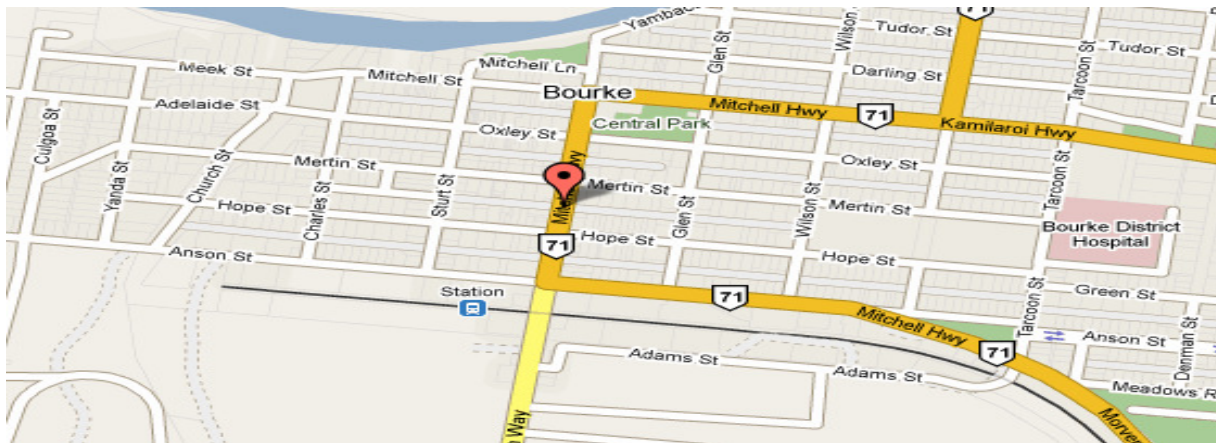
Prepared by  
**GPM**  
consulting & brokerage

- 1 -

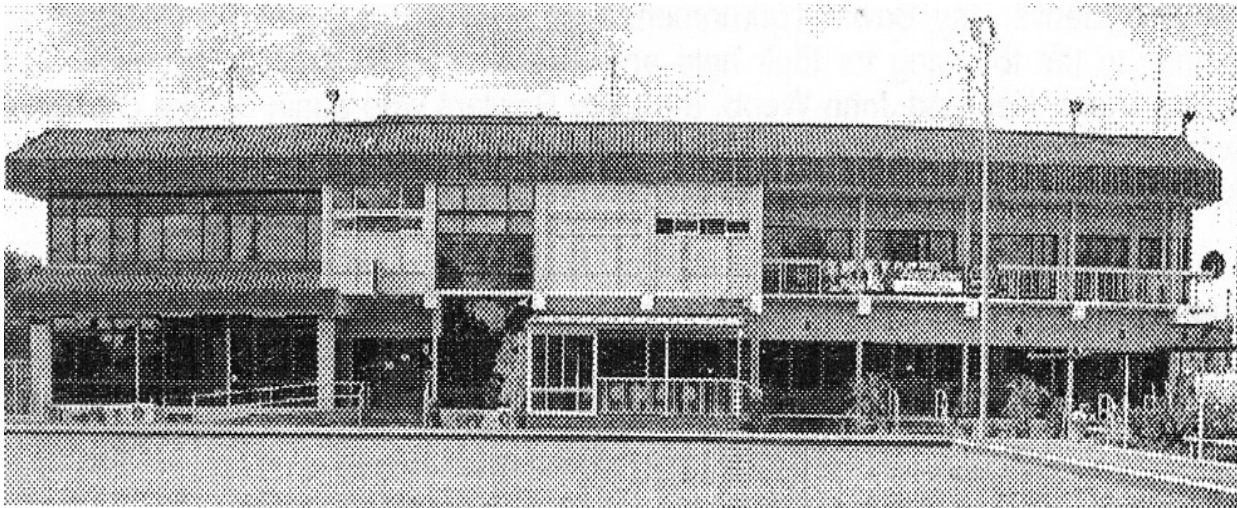
© GPM Consulting & Brokerage 2009. All forward-looking statements are subject to risks and uncertainties that could cause actual results to differ materially from the expectations expressed. Although we believe that the expectations reflected in our forward-looking statements are reasonable, any or all of these statements may prove to be incorrect. Consequently, no forward-looking statements may be guaranteed. This document was prepared for the venue with the assistance of GPM Consulting & Brokerage. Reproduction or copy of this document, in any form, is not permitted except where expressly permitted under the Copyright Act 1968 or where written permission is provided by GPM Consulting & Brokerage. This document relies on information provided by the venue, as well as data from relevant sources including O.L.G.R. & L.G.A. Websites. While GPM Consulting & Brokerage has taken all due care and diligence in preparing this document, GPM and its employees accept no liability for actions taken by the club on the basis of this document and are indemnified against any claims. All Figures have been obtained from the Venues Financial reports and are pre-GST if reported in that manner. Any calculated estimate is based on those financial report entries. Details in some statements are not uncommon to many Venues situations & may be recorded in the same or a similar manner where a copyright is not declared... Compilation by Alan Cosgrove.

Address: PO BOX 619 Narellan NSW 2567, Telephone: 02 4647 5091, Fax: 02 4647 5094, Mobile: 0438 418 984, E-Mail: info@gpmconsulting.com.au

- ❖ The people of NSW would benefit through an expected increase of \$124,148 in poker machine taxes.
- ❖ The Club adheres to all harm minimisation and responsible gambling measures stipulated in the Gaming Machines Regulation 2002 and the Gaming Machines Act 2001. Furthermore, Bourke Bowling Club has adopted the Clubs NSW Registered Clubs Responsible Conduct of Gambling Code of Practice – Best Practice Guidelines and is a member of the ClubSafe Responsible Gambling Program.
- ❖ The Club follows all Responsible Gambling Polices.
  - Bourke Bowling Club has a serious commitment to responsible gaming and ensures all gaming staff undertake extensive in-house training, as well as completing a Liquor Administration Board approved Responsible Conduct of Gambling course.
  - The following information should demonstrate that an increase of 20 poker machines at the club would have a net overall positive outcome for the community of Bourke.



**Bourke Bowling Map Location**



**Front Entry of Club**

Prepared by  
**GPM**  
 consulting & brokerage

## **Introduction**

The following submission outlines an application for a threshold increase of 20 poker machines for Bourke Bowling Club Ltd pursuant to the recently amended Gaming Machines Act 2001. In accordance with sections 32 to 37 of the Gaming Machines Amendment Act 2008 No 99, a Class 1 Local Impact Assessment is submitted herewith, detailing the benefits the club will provide to the local community, as well as the range of harm minimisation and responsible gaming measures employed by the Club. A copy of this Local Impact Assessment is available for public inspection at the Club during operating hours. It is projected an extra 20 poker machines, when fully operational, are forecast to generate \$595,206 in profit after Costs and Taxes. *(Estimates calculated from 2008 financial report)*

This amount would assist with improved services and may be utilised to reduce Bourke Bowling Club's net operating deficiencies for 2007-2008 of (\$258,967).

### **1.0...The Club**

Bourke Bowling Club Ltd is located in the Bourke City Council Local Government Area, classified as Band 2 by the Casino, Liquor and Gaming Control Authority as part of the Gaming Machines Amendment Act 2008 No 99. The Club occupies the site at the Corner of Richard St & Mitchell St Bourke, NSW 2840.

The club, formed in 1932, has been in operation for 77 Years and currently has 889 members. Significantly, this membership represents 41.5% of the 18+ (2,145) residents of the total Bourke community. The Club currently holds 26 gaming machines and provides a range of Food and Beverage Services and Free Entertainment on Saturday Nights.

The club currently has "44" staff: "9" Permanent, "35" Casuals.

Opening Hours are as follows:

Monday – Friday.....	11.30am - Midnight
Saturday.....	09.30am - Midnight
Sunday.....	09.30am - 10.30 pm

The club operates a Courtesy Bus for both Day and Night Use.

### **2.0...Benefits To The Local Community**

As one of the major employers in Bourke and with the expected added revenue from the additional gaming machines, the club is in the process of formulating plans to refurbish the venue, to include a family friendly Bistro together with an outdoor eating area incorporating a BBQ area, where families and social groups can come and enjoy the facilities of the Club. The growth of the club depends on additional income which will benefit the club and the community by engaging additional employees and greater community funding. Despite the fact an extra 20 poker machines represents a low range increase, a range of positive benefits would result from this increase is approved. The expected benefits of increased employment, safeguarding of the club's pricing & services, improved spend in the local area and most importantly, a significant increase in CDSE spend should offset any negative outcomes.

#### **2.1...Increased Expenditure on Local Suppliers**

Increased revenue from extra gaming machines is expected to allow greater diversify of the Club's service and entertainment mix and thus attract visitors from outside the region, which will create further revenue injections into the community. A more attractive entertainment and gaming venue may potentially limit Bourke residents from visiting venues outside the area, keeping their funds within the Bourke community.

#### **2.2...Pricing of Club's Services**

The provision of additional gaming machines will provide the Club with more scope to maintain competitive pricing policies for members and guests for supporting services. This would apply to all areas of Club, including food and beverage services, membership fees and functions. It is important to note that all members of the community who utilise these services and not just gaming machine players would receive these benefits. For example, many schools, community organisations and local business utilise our rooms for their functions and many families in the community frequent our bistro.

Prepared by  
  
 consulting & brokerage

- 3 -

© GPM Consulting & Brokerage 2009. All forward-looking statements are subject to risks and uncertainties that could cause actual results to differ materially from the expectations expressed. Although we believe that the expectations reflected in our forward-looking statements are reasonable, any or all of these statements may prove to be incorrect. Consequently, no forward-looking statements may be guaranteed. This document was prepared for the venue with the assistance of GPM Consulting & Brokerage. Reproduction or copy of this document, in any form, is not permitted except where expressly permitted under the Copyright Act 1968 or where written permission is provided by GPM Consulting & Brokerage. This document relies on information provided by the venue, as well as data from relevant sources including O.L.G.R. & L.G.A. Websites. While GPM Consulting & Brokerage has taken all due care and diligence in preparing this document, GPM and its employees accept no liability for actions taken by the club on the basis of this document and are indemnified against any claims. All Figures have been obtained from the Venues Financial reports and are pre-GST if reported in that manner. Any calculated estimate is based on those financial report entries. Details in some statements are not uncommon to many Venues situations & may be recorded in the same or a similar manner where a copyright is not declared. . Compilation by Alan Cosgrove.

Address: PO BOX 619 Narellan NSW 2567, Telephone: 02 4647 5091, Fax: 02 4647 5094, Mobile: 0438 418 984, E-Mail: info@gpmconsulting.com.au

### **2.3...Increased Employment Opportunities**

Additional local employment will be forthcoming with the planned refurbishment of the club. The growth of the club depends on this additional income, which will benefit the club and the community by engaging additional employees and greater community funding. It is expected, that an increase of 20 poker machines would necessitate additional staff to cover the increase in demand for food, beverages, payouts and general customer service on the gaming floor. An extra 20 Gaming Machines have the potential to generate additional net revenue of \$595,206 per year, thus the expectation is that staff and wages would increase exponentially on approval of this application. *(Estimates calculated from 2008 financial report)*

Expansion of gaming would also provide increased opportunities for employment and training through the implementation phase of the gaming floor, for both internal employees and external businesses. Furthermore, the projected increase in revenue through the extra poker machines envisage accelerated plans for additional facilities within the Club, which would result in further increases in employment, both directly and indirectly. Any increase in employment would be extremely beneficial within the Bourke LGA, particularly in the current economic climate where the anticipated unemployment rate expects to rise steadily. Given the great majority of our staff are drawn from our local community; a further benefit will be to keep additional funds local to the region.

### **2.4...Increase Economic Activity in the Local Region**

Increased revenue from extra gaming machines is also expected to allow greater diversify of the Club's service and entertainment mix and thus attract visitors from outside the region, which will create further revenue injections into the community.

### **2.5...Increased Spend on Community Grants**

There are approx 9 schools and 1 facility for the disabled in the Bourke Shire, which the Club supports and will continue to support with a monetary funding as well as the free use of the Club bus when requested. Bourke Bowling Club's community donations increased by 71% in 2008 (\$69,866) compared to \$20,222 in 2007, the amount donated (in both cases) is well above the clubs requirements under legislation. The projected increase in revenue from an extra 20 poker machines would provide the Club with the means to further increase / maintain community expenditure in order to support the local community.

Any further increases expected by the additional gaming machines, will have a positive affect on the community of Bourke, who obviously benefit greatly from the Club's support.

Pending approval of this application, Bourke Bowling Club will contribute an additional \$15,000 over 3 years at the rate of \$5,000 per annum to the CDSE Category 1. As there is no Local Committee in Bourke, Club Management will directly control the allocation of the additional funding. The additional Funds will be allocated above and beyond all standard CDSE Contributions, on a sliding scale; \$250 per machine per Year for 3 years; Pro Rata from installs dates, re: Time and Quantity Installed; To a Max Of \$5,000 pa.

The projected increase in revenue from an extra 20 poker machines would provide the Club with the means to further increase community expenditure in order to support the local community.

The club will liaise directly with Bourke Shire Council in regards to the applicable use of the Donations. Refer to Section 4.1..."Local Community and Related Issue", for further details.

#### **Bourke Shire Council Contact Information:**

Contact: Geoff Wise, General Manager

Tel: 02 6830 8000; Fax: 02 6872 3030; Mob: 0488 308000

Email: [bourkeshire@bourke.nsw.gov.au](mailto:bourkeshire@bourke.nsw.gov.au)

Prepared by  
**GPM**  
consulting & brokerage

## **2.6...Increased Taxes to Benefit NSW**

Any increase in gaming revenue at the Club will also benefit the wider NSW community because of the increase in poker machine tax. It is anticipated, that the projected increase in revenue from 20 poker machines of \$811,426 in a year, would lead to a further \$124,148 paid to the NSW Government by Bourke Bowling Club in poker machine tax, which would in turn, be utilised to provide necessary services to the people of NSW. GAMING MACHINE TAX ACT 2001- SECT 14-3-b. *(Estimates calculated from 2008 financial report)*

## **2.7...Overall Decrease in Poker Machines in NSW**

To gain an increase of 20 poker machines, Bourke Bowling Club would be required to purchase 30 and relinquish 10 to the State Government to dispose of. This would lead to overall decrease statewide, of 10 poker machines.

## **2.8...Gaming Machine Expenditure**

Bourke Bowling Club currently operates 26 gaming machines. The net revenue per gaming machine (Less GST) was \$1,054,854 for the 2008 year. The net profit after costs and Taxes was \$935,161. This represents a reduction in net profit against 2007 figures of 5.25%.

## **3.0...Harm Minimisation and Responsible Gambling Measures**

In order to provide a responsible gambling environment and comply with the relevant legislation, Bourke Bowling Club has adopted the Clubs NSW Registered Clubs Responsible Conduct of Gambling Code of Practice – Best Practice Guidelines principles and is a member of the Club Safe Responsible Gambling Program. The Club has lodged a Responsible Gambling Affidavit with the Liquor Administration Board.

Furthermore, it has made all necessary changes to comply with the requirements of Gaming Machines Regulation 2002 and the Gaming Machines Act 2001.

The Club complies with all aspects of the legislative framework, being:

- ❖ Harm Minimisation and public interest provisions of gambling related laws.
- ❖ Statutory and other signage.
- ❖ Advertising and promotional restrictions, prohibition on gambling inducements.
- ❖ Installation of clocks in gaming areas.
- ❖ Location of ATM's and Eftpos facilities.
- ❖ Prohibition of cash advances and credit.
- ❖ Self-exclusion schemes for problem gamblers.
- ❖ Minors and evidence of age offences.

## **3.1...Cash Advances or Credit**

Bourke Bowling Club does not provide any cash advances or other forms of credit to any member or guest for the purposes of gambling, other than payment of allowable prizes and bonuses. The Club does not allow the use of any credit facility so that a patron can represent any cash advance made by the Club as a payment for goods and services provided. Club directors, management and staff strictly adhere to this policy.

## **3.2...Advertising, Promotions and Inducements to Gamble**

Bourke Bowling Club does not offer any unlawful inducements to gamble such as free or discounted liquor promotions to gamblers or any schemes that allow distribution of free gambling credits to gaming machine players.

The Club does not use the word Casino in any description or promotion of the Club in signs or any advertising or promotional material, which is visible or audible from outside the premises. The Club's gaming machine signs comply with Section 44 of the Gaming Machines Act 2001. The Club will not publish in any form information that identifies a winner of a prize, if requested not to do so in writing.

### **3.3...Gaming Machines Regulation 2002**

Bourke Bowling Club has adopted the following responsible gaming practices to comply with the above regulation:

- ❖ One of each of the six permissible gambling warning notices and one of two permissible problem-gambling notices is located on each gaming machine in suitably sized letters (Clause 25).
- ❖ Notices supplying information on the chances of winning prizes on gaming machines are on display in each part of the Club where gaming machines are located (Clause 21).
- ❖ A counselling signage notice is displayed in the vicinity of the Club's main entrance (Clause 26).
- ❖ An approved problem gambling notice is clearly presented on each of the club's automatic teller machines
- ❖ The Club has located all ATM and EFTPOS machines in areas where there are no gaming machines.
- ❖ A fully functional clock (set to, or within 10 minutes of, correct time) is visible to any person playing a gaming machine.
- ❖ Approved Player Information Brochures are readily available and noticeably displayed in all gaming machine areas in English. Player Information Brochures are available in any of the twelve required languages as soon as practicable after a request.

### **3.4...Problem-Gambling Counselling**

Bourke Bowling Club is a member of the "ClubSafe" program.

ClubSafe are the service provider for the provision of problem gambling treatment services for members and patrons. The club displays a notice of the name and contact details of this provider. If a patron enquires about problem gambling counselling, staff will ensure that the person is made fully aware of ClubSafe, G-Line, or any other provider near the gambler's residence. Any person identified as a problem gambler, will also be advised of the Club's Self-Exclusion Scheme. ClubSafe brochures, detailing information on counselling and the G-Line service, are also prominently displayed and readily available at the Club. The club and all staff take this service extremely seriously and take an active role in ensuring this information is available and known to any potential problem gamblers.

### **3.5...Self-Exclusion Scheme**

Bourke Bowling Club has adopted the ClubSafe self-exclusion scheme. Appropriate staff training has ensured that staff knows when to talk to patrons about self-exclusion and how to process their request. As part of this scheme, the Club:

- ❖ The club or an employee cannot refuse a participant's request to participate in the scheme.
- ❖ On receipt of a request, the Duty Manager will explain the process to the person and present the relevant documentation.
- ❖ Allows a participant to obtain independent legal or professional advice, at the participant's expense, before signing the appropriate forms as to the meaning and effect of the undertaking.
- ❖ Ensures that all participants sign a written undertaking not to gamble in the Club, which clearly states the period of exclusion. Furthermore, the Club does not allow a participant to withdraw from the undertaking without the consent of ClubSafe, who will ensure the participant undergoes a rigorous assessment process to ascertain the progress the person has made in managing their gambling problems. The Club employs a minimum three month exclusion period as per the ClubSafe model.
- ❖ Ensures all appropriate information about gambling related counselling and treatment services are displayed and available to patrons, on relevant signage and in brochures within the Club.
- ❖ Ensures staff is equipped to identify participants by displaying a recent photograph in areas accessible only to gaming staff as well as a folder with the details of all participants in it. The importance of identifying participants is emphasised in staff training.
- ❖ Displays signs in the gaming area & reception foyer, advertising the accessibility of the self-exclusion scheme.

### **3.6...Monitoring Procedures**

Regular and thorough monitoring checks are undertaken as follows:

- ❖ Gaming machine warning stickers are checked on a daily basis by club staff.
- ❖ The Duty Manager completes a monthly compliance checklist.

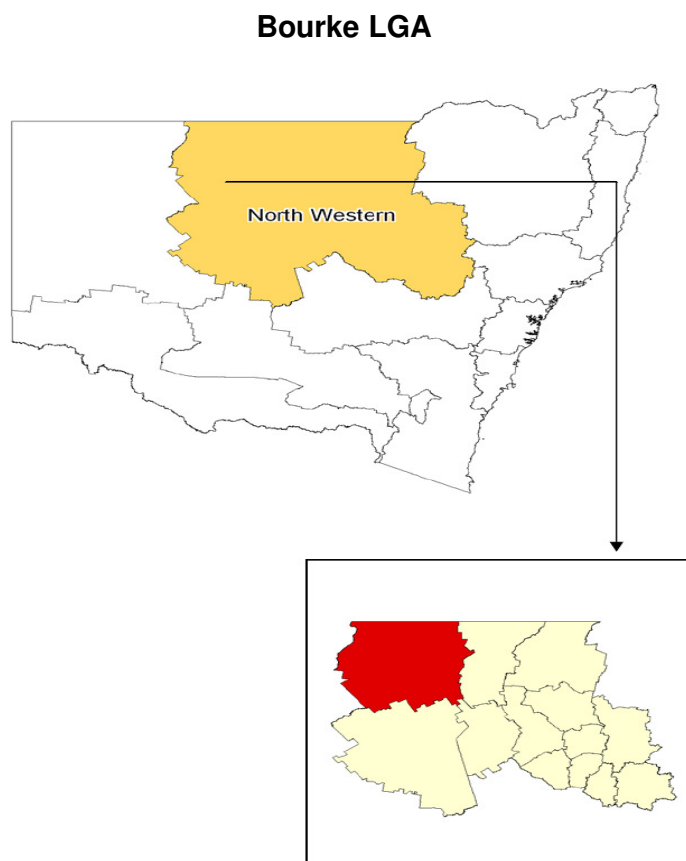
This monitoring process is thorough and exceeds the minimum requirements, further emphasizing the Club's commitment to ensuring a safe gambling environment for its patrons.

### **3.7...Gaming Related Staff Requirements and Training**

All staff who undertakes in any gaming-related duties, have all completed a Liquor Administration Board approved Responsible Conduct of Gambling course (RCG). As a member of ClubSafe, all staff have been trained in the ClubSafe program and additional training has been provided for gaming area staff and Duty Managers in assisting problem gamblers and processing self-exclusions. This training goes beyond the minimum requirements of the legislation and focuses on how staff can properly assist problem gamblers. The ClubSafe Manual is available to all staff for training and revision purposes for responsible gaming procedures.

### **4.0...Map of Bourke LGA**

The club is located in the Bourke LGA. As displayed in the map reproduced below. Bourke LGA has an estimated population of 3,088 residents.



Prepared by  
**GPM**  
 consulting & brokerage

#### **4.1... Local Community and Related Issue**

Shareholders and the workforce of most companies involved in the operation of the venue should derive some socioeconomic benefit if the Threshold Application meets approval. Similarly, Local Community organisations and charities will derive a direct social benefit from sponsorship and contributions from the Applicant by the approval of the Threshold Application.

The club understands the social issues prevalent in Bourke. The Bourke Shire council has completed detailed studies into the socio economic issues in the community and has developed a 152 page comprehensive paper on them. Bourke Shire Council's Social Plan for the community is viewable at:-

<http://www.bourke.local.nsw.gov.au/files/1803/File/BSP2005.pdf>.

The Bourke Social Plan has been prepared in accordance with the draft Social and Community Planning Guidelines under the Local Government (General) Amendment (Community and Social Plans) Regulation 1998. The major objective of the study was to analyse the available community services and facilities as they relate to the perceived and real needs of the community.

The Social Plan follows the headings below:

- ❖ Social Environment
- ❖ Physical Environment
- ❖ Community Facilities and Services
- ❖ Transport and Communication
- ❖ Employment and Economic Activity
- ❖ Recreation and Leisure

The Needs and Gaps Analysis suggests that deficiencies in services appear to exist in:

- Before and After School Care
- Vacation Care
- Occasional Child Care
- Psycho/social professional counselling services
- Drug, alcohol and gambling addiction programmes/treatment
- Community Transport
- Cultural activities
- Library services

As such, Bourke Bowling Club would like to direct the additional funds, as detailed in Paragraph 2.5..."Increased Spend on Community Grants", direct to the Bourke Shire Council for distribution to the areas foreseen as the most urgent need for the community.

#### **4.2...Demography**

Bourke is a wonderful community established in 1861 on the banks of the Darling River in far North-West NSW. The Bourke Local Government Area (LGA) lies on the Mitchell Highway and the Main Western Rail Link. The Main Western Line was the original western trunk line, starting from Sydney and extending to the town of Bourke in the state's north-west. Despite its name, it never reached the border. Historically, the town was a vital link for agriculture in the west and larger cities to the east. The Club is located 824 km from Sydney GPO. From the Australian Bureau of Statistics 2006, the age distribution of the 3,088 residents breaks down as follows:

- ❖ 26.49% (818) of residents are in the Under 15 age group.
- ❖ 4.05% (125) of residents are in the 15-17 age compared with NSW average of 4.1%
- ❖ 27.85% (860) of residents are in the 25 to 44 age groups.
- ❖ 18.56% (604) of residents are aged 55 and older, compared to 24.8% in NSW.
- ❖ Overall, 69.46% of the population were aged 18 years and over. This compares to 76% for NSW,
- ❖ 1.7% of Bourke LGA residents speak a language other than English at home, compared to 20.1% in NSW.
- ❖ Significantly, Indigenous residents account for 29.4% of the resident population, compared to 2.1% in NSW.
- ❖ The unemployment rate is also significantly higher at 7.9%, compared to 5.9% in the rest of NSW.
- ❖ The mean age for Bourke Residents is 38 years.

See chart over page: ↓



### **Profile of the Bourke LGA, provided by 2006 Census data.**

Population 2006				
Source: Australian Bureau of Statistics 2006				
Age Groups	Males	Female	Numbers	% Of Total
Under 15	427	391	818	26.49%
15-17	70	55	125	4.05%
18-24	125	159	284	9.20%
25-34	195	220	415	13.44%
35-44	227	218	445	14.41%
45-54	213	184	397	12.86%
55-64	168	134	302	9.78%
65-74	106	73	179	5.80%
75+	56	67	123	3.98%
Total	1,587	1,501	3,088	100.00%

The annual Population Growth of the Bourke LGA is 0.6% with the average NSW State Growth est. at 0.9%

### **5.0...Conclusion**

Bourke Bowling Club has been experiencing declining profits over the past few years. Operating Deficiencies in 2008 of (\$187,932) and in 2007 of (\$71,035).

The extra revenue expected from an increase of 20 poker machines would aid in stemming this decline in profit, and thus allow a greater monetary contribution to the community. A further \$15,000 over 3 years, to be provided to CDSE if this submission is approved, it will undoubtedly make a substantial difference to the health and well-being of families in the region. With the downfall in revenue, focus can be aimed at the sustained economic condition, introduction of indoor smoking bans and an increase in poker machine taxes as other significant origins. The club is undertaking all efforts, in every area of the clubs operations, to ensure a positive future for its members and the community as a whole.

As evidenced by the preceding information, the Club has undertaken a number of measures to ensure that the club conducts its gambling activities in a responsible manner. Bourke Bowling Club has shown a very high level of legislative compliance over an extended period. In addition to joining the ClubSafe program, the Club takes its commitment to responsible gaming extremely seriously and these measures prove this dedication.

The potential positive impacts to the community of (and NSW more generally) in combination with the extensive harm minimisation and problem gambling initiatives undertaken, indicate a low range increase of 20 poker machines in the Club should result in a net positive outcome to the region.

Murray Smith  
Chief Executive Officer  
By Order, the Board of Directors  
Bourke Bowling Club Limited

Prepared by  
**GPM**  
consulting & brokerage