

Appendix 1

ClubSafe Responsible Conduct of Gambling Policy

Prepared by:



© Lawler Partners HGM Pty Ltd 2009. Reproduction or copy of this document, or part thereof is prohibited except as where expressly permitted under the Copyright Act 1968 or where written permission is provided from Lawler Partners Pty Ltd.

IMPORTANT NOTICE

Machine Playing Conditions



These Conditions regulate and limit the rights and obligations of anyone who plays a gaming machine in the Club. You should read them before playing any machine. Do not play any machine if you do not understand and accept all of these Conditions.

1. No patron is required to participate. Any playing of machines is at your sole option, discretion and risk.
2. Player information brochures are available. Please ask if you would like to know how to get one. Player brochures are for general information only and if there is any inconsistency with these Conditions, then to the extent of the inconsistency these conditions prevail.
3. You should not play any machine unless you completely understand -
 - (a) how you have to play it, and
 - (b) the combinations that you would have to get to win a prize.
4. If you disagree with anything done by the Club in connection with a prize or the playing of a machine, please ask about the Club's complaint handling procedures.
5. Machines must not be played by anyone under the age of 18 years.
6. These Conditions cannot be varied for you personally except by a document that sets out the change(s), expressly refers to these Conditions and is signed by an authorised Club officer.
7. These Conditions apply even where there are separate conditions stipulated for a particular machine or promotion or prize, except only where (and to the extent that) the Club expressly states in writing that it is amending these Conditions.
8. Payment may be withheld and the Police called if in the Club's opinion a machine or the circumstances show any sign of use of or interference with the machine which is unlawful or in breach of these Conditions or the Club has any reasonable suspicion of play in breach of these Conditions or which is otherwise improper.
9. A prize or purported prize will not be paid or awarded where in the Club's reasonable opinion it arises as a result of a machine malfunction; or as a result of any aspect of the operation, working, use or performance of the machine that was not intended or not reasonably anticipated by the Club (even if that aspect of the operation, working, use or performance of the machine was otherwise predictable); or (without limiting the previous general words), where the winning combination showing has not been registered in the machine. The Club's decision is final.
10. Various legal requirements binding on the Club in some circumstances are mandatory and cannot be varied. If any such requirement is inconsistent with these Conditions then the legal requirement prevails but only to the extent of the inconsistency.
11. You must not play any machine which the Club has marked as malfunctioning or otherwise in some way marked or indicated as withdrawn from play. The Club will not pay any prize won on any such machine.
12. At any time when requested by the Club a player must provide their full name and address plus details of the basis on which they are on the Club's premises, with such documentary proof as the Club reasonably requires. The Club may prevent you from playing or continuing to play any machine if you do not satisfactorily comply with this requirement.
13. Club employees and former employees, and contractors and suppliers to the Club (and their officers and staff) must observe all relevant restrictions imposed by the Club from time to time regarding such persons. Without limiting those general words, an employee must not play machines whilst on duty nor during meal or rest periods or other breaks from duty. Prizes won by an employee or former employee, or by a contractor or supplier (or one of their officers or staff) when playing a machine in breach of this Condition, will not be awarded or paid.
14. Only coins and notes of Australian legal tender are to be used to play gaming machines and that must be in accordance with the particular requirements of any particular machine as noted on that machine.
15. You may reserve not more than one machine at a time and then for a maximum of 15 minutes. However, the Club may in any particular case decide in its discretion not to allow a machine reservation to continue. The Club has no liability to you if you reserve a machine but for any reason that machine is played by some other person. The Club may in its discretion but without limiting the other provisions of this condition, allow particular types of players to reserve more than one machine or to reserve a machine for a longer period.
16. The Club may reserve any number of machines for the exclusive use of full members or for a particular promotion or activity. If you are not entitled to play a machine under any such particular arrangement then you are not entitled to claim any prize won on the machine whilst it is so reserved.
17. A prize will not be paid unless the winning combination is seen by an authorised staff member of the Club and verified for payment according to the Club's standard procedure for paying prizes.
18. A prize will not be paid if it is won before the opening time of the Club, or after the announced closing time of the Club.
19. The Club has the right to ensure that every prize, short pay and machine refill is played off.
20. The Club may refuse any person the right to play or to continue to play a gaming machine in its discretion at any time without giving any reason.
21. You must immediately report to an authorised Club staff member, any machine that is able to be operated without using the correct legal tender or without reducing the credit meter by an appropriate amount or that is malfunctioning in any other way, and you must stop playing that machine.
22. You must also immediately report to an authorised Club staff member, any machine that overpays or pays other than the correct amount for a winning combination, and you must stop playing that machine.
23. Any property, including money, left by players in or on an unattended machine must be reported and returned to the Club for appropriate action.
24. If you do not report a malfunction as required then you may be liable to the Club for damages suffered by the Club as a result.
25. You must not tilt, rock, move damage or interfere with a machine or do anything calculated or likely to interfere with the normal operation of a machine, or do anything prohibited by law.
26. Cheating in relation to a machine is a very serious criminal offence carrying a maximum penalty of \$11,000.00 or imprisonment for 12 months, or both, for each offence.
27. Prizes are not payable to any player, and may not be claimed by any person, who is under the age of 18 years or who is not either a financial member, provisional member, temporary member or honorary member, or a bona fide guest of a member and on the premises in compliance with all requirements of the law and the Club's Constitution and playing the machine in the reasonable company of the member concerned.
28. Prizes or accumulated credits over \$2,000.00 will, and prizes of less than that amount may be paid by crossed cheque payable to the prizewinner, or by EFT where that is requested by the prizewinner and those means are available to the Club.
29. Monetary prizes and stored or accumulated credits will be paid within 48 hours of a request for payment from the prizewinner. The Club in its discretion may pay part of a prize or of a stored or accumulated credits, in advance of paying the balance.
30. A prize may be awarded in a non-monetary form. Where a prize is awarded in a non-monetary form there is no option to take the prize in any other non-monetary form except as the Club may have separately specified in writing for any particular machine or promotion. The prizewinner does have the choice of being paid instead. The prize will be awarded as stated in the Club's published information, or if no time has been specified then within 48 hours of a request from the prizewinner.
31. Where a prize is not awarded or paid immediately after the prizewinner has requested it, the Club will give the prizewinner a written acknowledgment of the prizewinner's entitlement to the prize.
32. For a monetary prize, the Club will pay the prizewinner an amount equal to but not exceeding the value of the credits accumulated by the prizewinner from playing the relevant machine.
33. Except as specified by the Club in writing or by legislation for any particular machine or promotion, all prizes are paid in cash. The Club keeps certain records in relation to machines and prizes. Players must cooperate with the Club regarding the keeping of those records.
34. If the Club offers any machine which is operated as part of an inter-club linked gaming system (no matter what that system is named) then -
 - (a) to the maximum extent permitted by law, progressive jackpots (and other similar prizes) are payable by TAB limited or other operator of the linked gaming system alone and the Club has no liability to pay, and gives no representation or warranty concerning, any such jackpot, prize or other benefit offered by that operator;
 - (b) any other specific Conditions applicable to the relevant linked gaming system, including those notified by the operator of the linked gaming system, apply. If there is any inconsistency, then as between you and the Club (except as any other Conditions promulgated by the Club may expressly provide) these Conditions prevail to the extent of the inconsistency to maximum extent permissible at law;
 - (c) the Club may if it chooses act as the representative or agent of the linked gaming system operator eg. to facilitate payment of a progressive jackpot or prize. However, that does not waive or affect these conditions all of which continue to apply.
35. The Club may immediately withdraw a machine or any progressive system from play if the Club in its absolute discretion suspects a malfunction. If the machine is of a progressive type then the Club will have the machine repaired as soon as practicable.
36. Only the actual prizewinner may claim or receive payment of a prize. They must do so in person at the club's premises. The Club may in its absolute discretion waive this condition.
37. If the Club in good faith pays or awards a prize to someone appearing to the club to be or to duly represent the prizewinner, then the maximum extent permitted by law that payment or award fully discharges the club from all liability to the prizewinner in relation to that prize.
38. If the Club provides any gaming machine ticket (as defined in the Gaming Machine Regulation 2002 as may be amended from time to time) then -
 - (a) The ticket may only be redeemed at the place or places at the Club's premises which are designated by the Club.
 - (b) The ticket may be redeemed at the Club's election in cash or by cheque or both.
 - (c) The Club may refuse to redeem the ticket if the Club is not satisfied that the person claiming in respect of the ticket or if that person does not provide documentary proof of identity and their signature and provide and let the Club take from that documentary proof of identity the following information - their full name and address; the identifying numbers or letters of the document proving their identity; and the full name, address and signature of the person claiming in respect of the ticket (if different to the person presenting the ticket).
 - (d) Claims may be made for unclaimed tickets at any time when the Club is open for trading.
39. The Club may still publish information relating to the type or value of any prize won and the venue or geographic location where it was won, even if the prizewinner requests in writing that nothing disclosing the prizewinner's identity be published.
40. By accepting or redeeming a prize, a prizewinner consents to use of their name and likeness for marketing purposes (until they request the Club in writing given to the Club or an employee of the Club that anything disclosing their identity not be published), based on the winning of the prize and without additional compensation.
41. Nothing in these Conditions affects anything contained in any self-exclusion deed which you may sign. The Club is entitled to rely on every provision in any self-exclusion deed signed by you (whether or not the deed is titled as a self-exclusion deed), despite anything in these Conditions.
42. Any other specific Conditions applicable to any particular machine, promotion or prize apply. If there is any inconsistency, then (except as those other conditions may expressly provide) these Conditions prevail to the extent of the inconsistency.
43. A member who breaches any of these Conditions is liable to disciplinary action by the Club in addition to any disqualification from claiming a prize and any other lawful penalty.
44. The Club may withdraw or amend these Conditions at any time in its absolute discretion. Any change becomes operative immediately it is displayed anywhere at the Club.

IS GAMBLING A PROBLEM FOR YOU?
G-LINE (NSW) IS A CONFIDENTIAL, ANONYMOUS & FREE COUNSELLING SERVICE
FREE CALL 1800 633 635



www.allpride.com.au

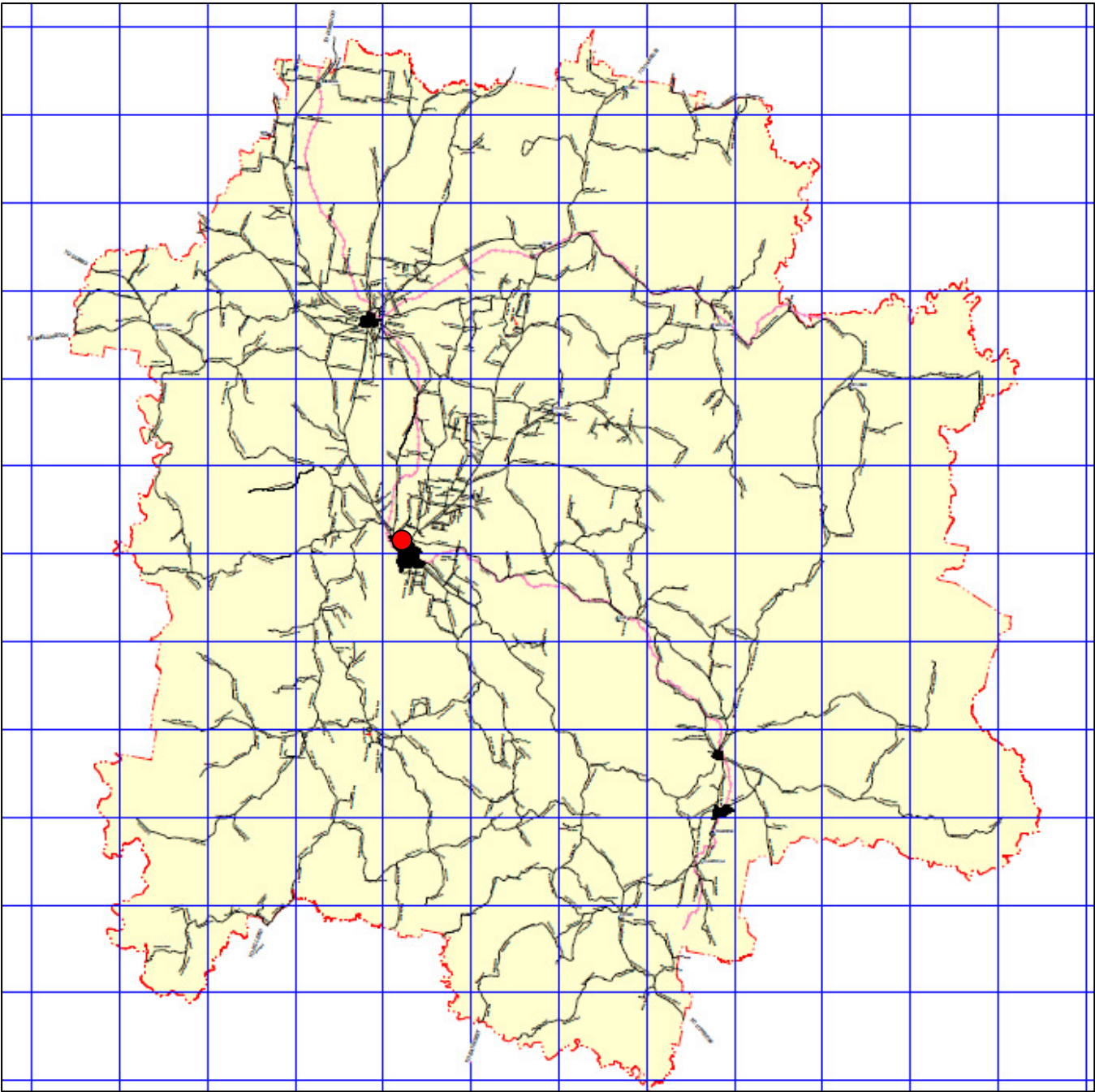
Appendix 2

LGA Map

Prepared by:



© Lawler Partners HGM Pty Ltd 2009.
Reproduction or copy of this document, or part thereof is prohibited except as where expressly permitted under the Copyright Act 1968 or where written permission is provided from Lawler Partners Pty Ltd.



Venue ●

Appendix 3

Local Community Map

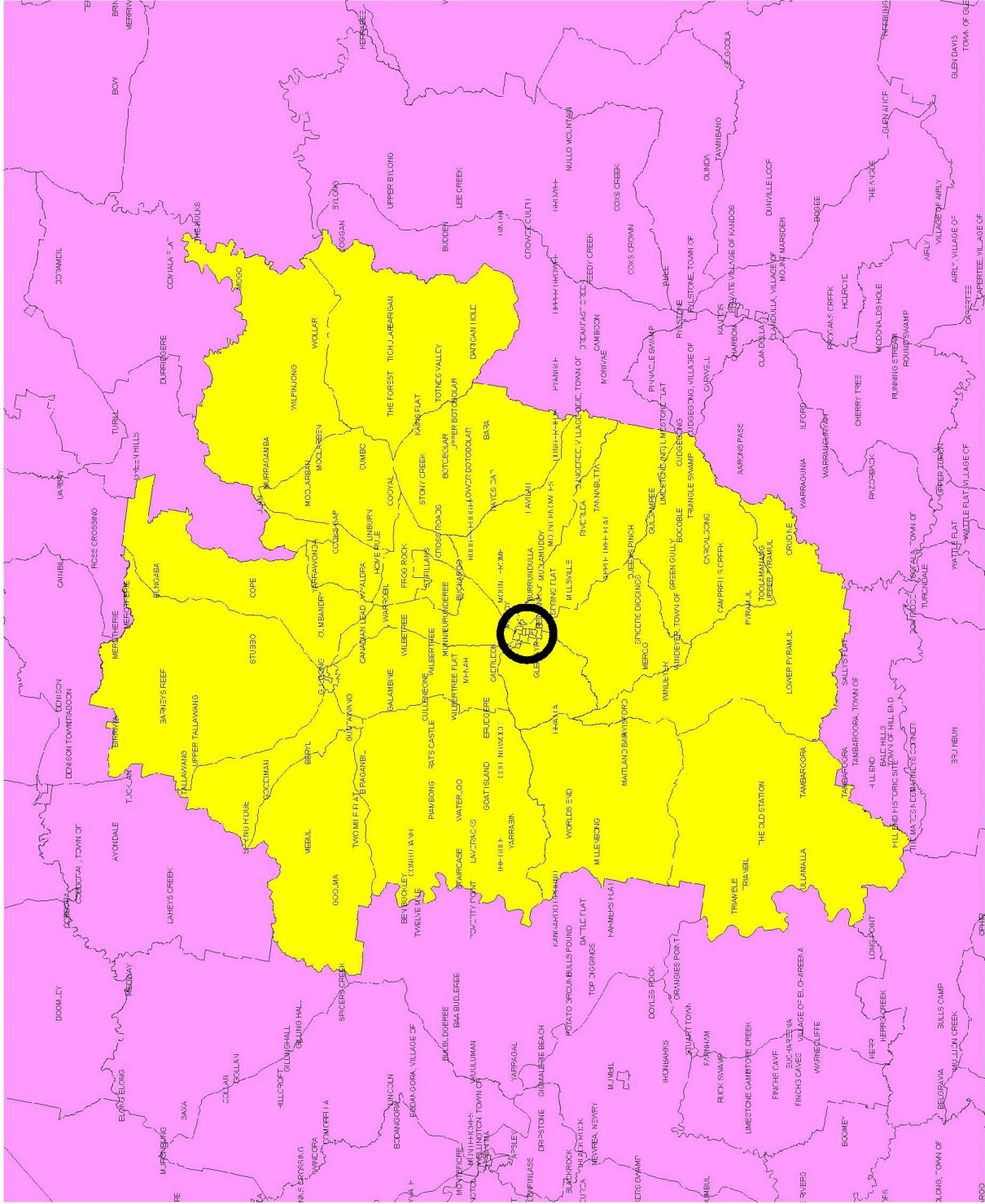
Prepared by:



© Lawler Partners HGM Pty Ltd 2009.

Reproduction or copy of this document, or part thereof is prohibited except as where expressly permitted under the Copyright Act 1968 or where written permission is provided from Lawler Partners Pty Ltd.

3km Radius & Mudgee Shire



Appendix 4

Layout of Venue

Prepared by:



© Lawler Partners HGM Pty Ltd 2009.
Reproduction or copy of this document, or
part thereof is prohibited except as where
expressly permitted under the Copyright Act
1968 or where written permission is provided
from Lawler Partners Pty Ltd.

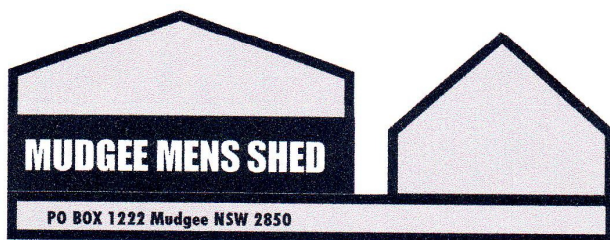
Appendix 5

Mudgee Men's Shed correspondence and supporting information

Prepared by:



© Lawler Partners HGM Pty Ltd 2009.
Reproduction or copy of this document, or
part thereof is prohibited except as where
expressly permitted under the Copyright Act
1968 or where written permission is
provided from Lawler Partners Pty Ltd.



23rd November 2009

Mr Owen Hughes
General Manager
Club Mudgee
99 Mortimer Street
Mudgee
NSW 2850

Dear Sir,

Re: Request for Financial Assistance.

I refer to your correspondence of 20th November and our subsequent meeting on that date.

Please be advised that we have perused your draft offer and the enclosed conditions. In this regard the Mudgee Men's Shed Committee acknowledges that the contribution is contingent on the approval of an application to increase the number of gaming machines at the Club.

The Committee requests that you pursue the matter on their behalf.

We and the community appreciate and thank you for your support.

Yours faithfully

Bruce McGregor
For the Mudgee Men's Shed Committee.

'Working Together For Mudgee Men's Future'

Men's Shed Committee: Andrew Whale, Greg Toole, Michael Brydon, Brett Corven, Eamonn Corvan, John Freebody and Bruce McGregor.

Construction photographs of Mudgee Men's Shed





A big slab for the boys at Mudgee Men's Shed

BY CONNIE STEVENS

07 Jun, 2009 09:07 PM

- Local builders donate their time for Men's Shed

- Large slab is 550 sq metres

- Hopefully done by Field Days time

Fifteen local builders and contractors gave their time generously last Friday to lay the slab for the Mudgee Men's Shed.

Member of the Men's Shed steering committee and local builder, Greg Toole was directing proceedings like Steven Spielberg and said he had been a bit concerned about the weather.

"When the sky started to clear, I was relieved.

"This is the single biggest part of the project and has to be done in one go.

"The large slab is 550square metres."

Mr Toole said Furneys was putting together the framework for the shed.

"The next stage is for them to stand the framework up and get it ready for putting the roof on and the external cladding."

Steering committee member, Andrew Whale said the aim was to have the shed to lock up stage by the Mudgee Small Farm Field Days.

"It will be open for the field days to showcase what it is and how it is progressing and developing.

He praised the generosity of the local builders.

"Without the support of local tradies, we wouldn't have been able to get to this point.

"They started work here this morning at 6am and are giving their time and their effort toward the project.

"The generosity is overwhelming," he said.



DIGGING IN: Greg Toole and Andrew Whale doing their bit to lay the slab at the Mudgee Men's Shed last Friday.

comments

No comments yet. Be the first to comment below.

post a comment

Men's Shed ready to go ahead

BY LYNN PINKERTON

07 Apr, 2009 04:10 PM

If it is up to the Mudgee Men's Shed Steering Committee, the fill sitting on the cleared site for the new shed will be levelled by the end of the month, ready for a layer of cement.

With a development application approved by Mid-Western Regional Council, the Mudgee Men's Shed is continuing to move along at a steady pace.

Two hundred tonnes of fill has been dotted over the site at AREC, ready to be levelled over the coming weeks.

"We are fitting in with the local tradesmen at the moment and things might be stalled with the Easter break; we are still hoping it will be all done by the end of the month," steering committee member Eamonn Corvan said.

By building the structure from scratch, Mr Corvan said they were hoping to make it as environmental friendly as possible.

"We are currently pricing underfloor heating and waiting for a few suppliers to get back to us," Mr Corvan said.

"It's a new innovation but it will minimise the cost of running the shed in the long term and it will warm the place up in the winter," Mr Corvan said.

"We are also sourcing other grants so we can do things to a high standard."

"It is a really big project, it is the first time something like this has been purpose built and on completion it will be one of the biggest in NSW," Mr Corvan said.

To date the local community has supported the shed to the tune of over \$100,000, not including the significant value of the labour offered by the local tradesmen and professional services.

Mr Corvan said further opportunities would exist for people to help by sponsoring the construction and fitting out the Men's Shed.

Sponsorship will be in the form of a donation of cash, goods, services, and may even qualify for recognition in a bronze, silver, gold or platinum category for recognition.

Work on the concrete slab will occur soon with the shed erected to the lock-up stage in time for the Mudgee Small Farm Field Days.

[Garden Sheds Online](#)

Buy A Shed this Spring SAVE & order online

Ads by Google


comments

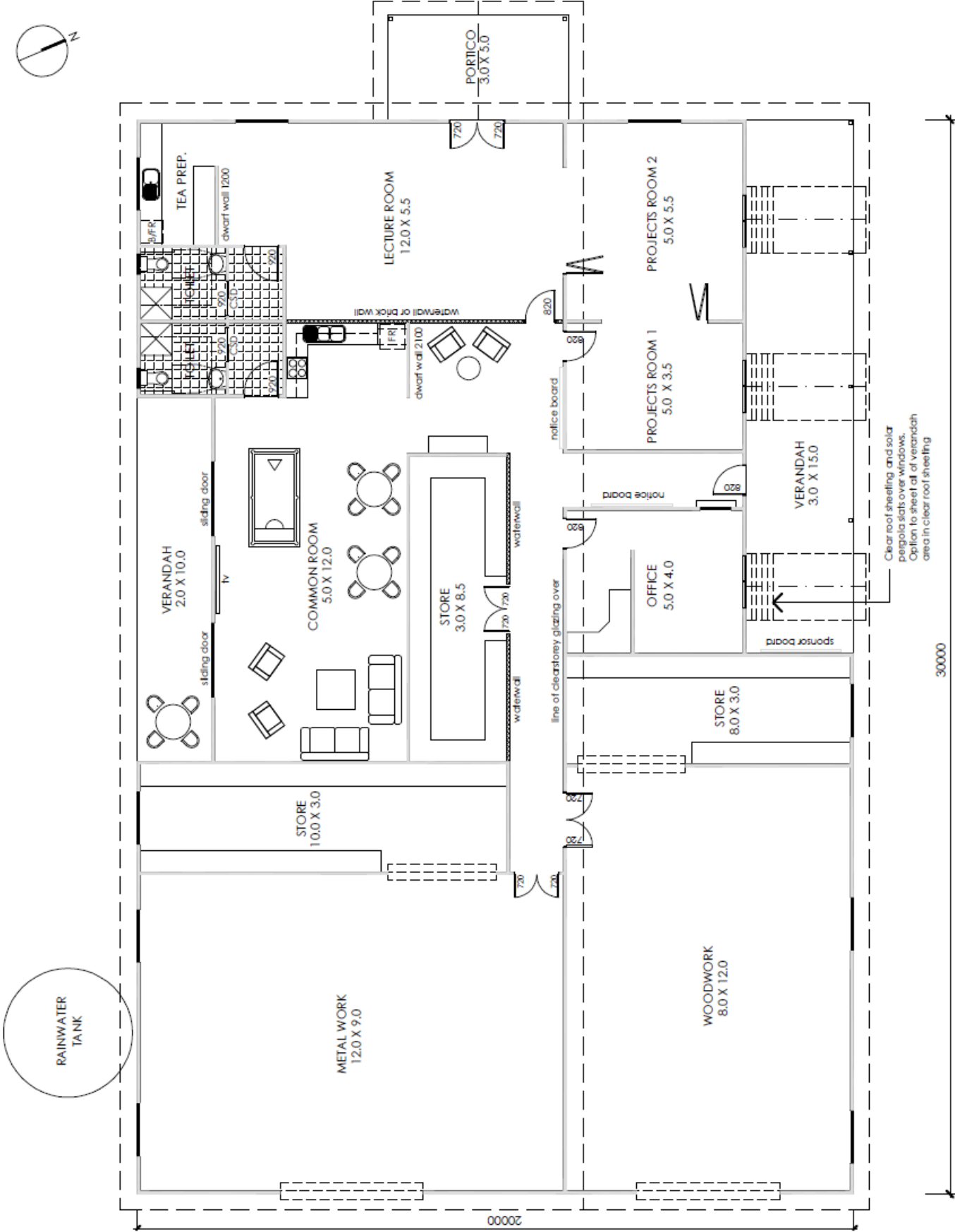
No comments yet. Be the first to comment below.

post a comment



ALL SET: Men's Shed steering committee member Eamonn Corvan.

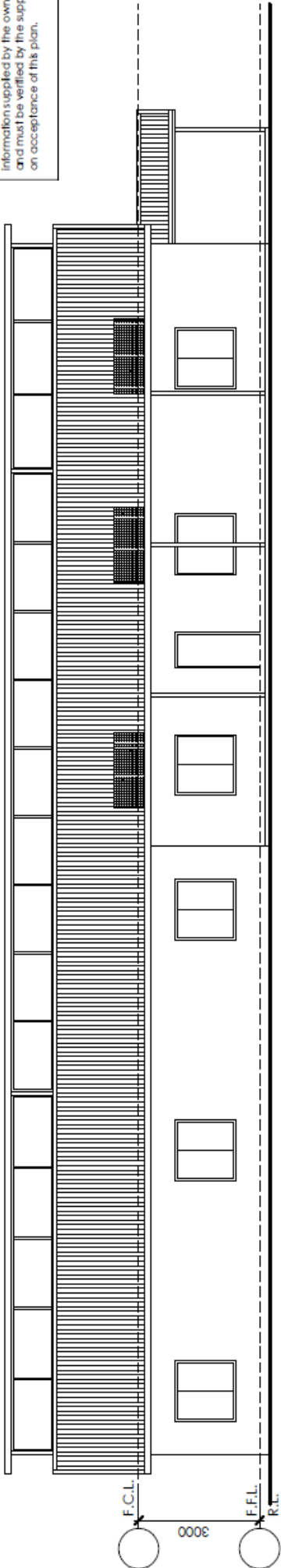
Note 1. Builder to confirm all dimensions before commencing any works. 2. If discrepancies occur on plans, designer is to be contacted. 3. All dimensions are in millimeters unless otherwise stated. 4. Use figured dimensions only. Do not scale from plans. 5. Site information is based on information supplied by the owner and must be verified by the supplier on acceptance of this plan.		B GENERAL AMENDMENTS A PRELIMINARY Issue Description	10.09.08 13.08.08 Date
		6 Robert Jones St, Mudgee NSW 2850 P: 02 6372 3103 M: 0418 605 898 F: 02 6372 3803 E: sunshinewy.com.au This drawing is subject to copyright and must not be reproduced or used without the consent of Sunral Designs.	
Client MUDGEES MENS SHED		Project AREC Site Ulan Rd Mudgee NSW 2850	
Title FLOOR PLAN		Scale 1:100	
Date August 08		Drawing No. 202MMS-02	
Drawn RG/RR		Issue B	



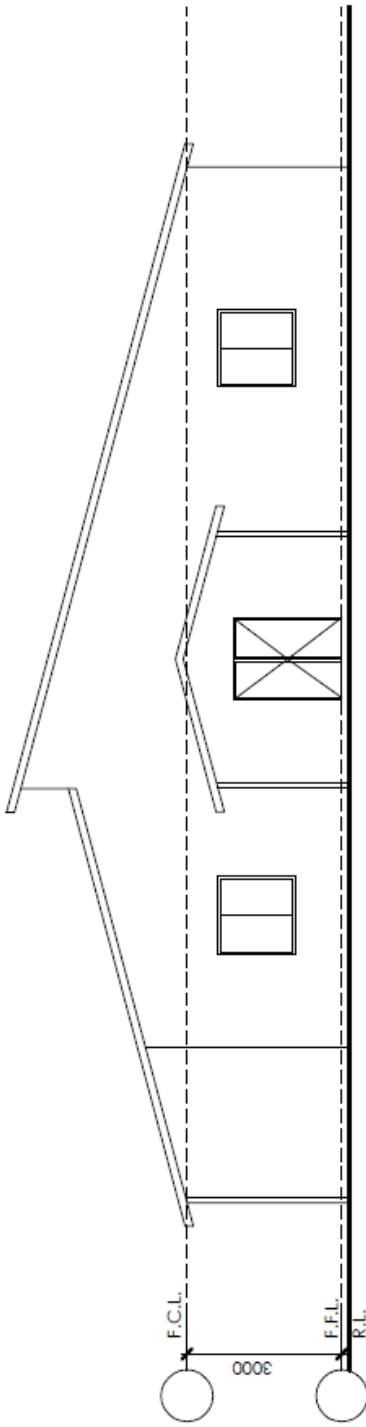
FLOOR PLAN

Notes

1. Builder to confirm all dimensions before commencing any works.
2. If discrepancies occur on plans, designer is to be contacted.
3. All dimensions are in millimeters unless otherwise stated.
4. Use figured dimensions only. Do not scale from plans.
5. Site information is based on information supplied by the owner and must be verified by the supplier on acceptance of this plan.



NORTH ELEVATION



WEST ELEVATION

B. GENERAL AMENDMENTS		10.09.08
A. Issue	Description	Date
1. PRELIMINARY		13.08.08



6 Robert Jones St, Mudgee NSW 2850
P: 02 6372 3103 M: 0418 605 898
F: 02 6372 3803 E: sunrai@twy.com.au

This drawing is subject to copyright and must not be reproduced or used without the consent of Sunrai Designs.

Client: MUDGEES MENS SHED

Project: AREC Site Ulan Rd
Mudgee NSW 2850

Title: ELEVATIONS

Scale: 1:100

Date: August 08 Drawn: RG/RR

Drawing No: 202MMS-03 Issue: B