
Gaming Machines Act 2001

CLASS 1 LOCAL IMPACT ASSESSMENT

Premises:

One World Sport Parramatta
295 Church Street
Parramatta

Licensee:

Katrina Louise Cooper

Licence Number:

LIQH400111444

LGA:

Parramatta City Council

Current Gaming Machine Threshold:

10

Increase in Gaming Machine Threshold:

9

Proposed Gaming Machine Threshold:

19

**Back Schwartz Vaughan
Solicitors and Attorneys**

Level 5

75 Elizabeth Street
SYDNEY NSW 2000
DX 110 SYDNEY

Tel 9223 3355

Fax 9223 3142

EXECUTIVE SUMMARY

(a) Introduction

One World Sport Parramatta (the "Hotel") is situated at 295 Church Street, Parramatta and located within the Parramatta Local Government Area ("LGA"). Parramatta LGA is classified by the Casino, Liquor and Gaming Control Authority (the "Authority") as "Band 2".

Approval is sought pursuant to Section 36 of the *Gaming Machines Act* 2001 (the "Act") to allow a low range increase of the Hotel's gaming machine threshold by nine (9) through the grant of a Class 1 Local Impact Assessment ("LIA").

The Hotel's gaming machine threshold is currently approved to allow ten (10) poker machines to be operated on the licensed premises. If this Application is granted, it is proposed that five (5) hardship gaming machines which were awarded to the Hotel by the former Liquor Administration Board (the "Board") on 12 May 2003 will be installed. An additional four (4) poker machine entitlements will be acquired and transferred to the Hotel within the two (2) years permitted by the Act on the increase of the Hotel's gaming machine threshold.

(b) Responsible gambling and harm minimisation

The primary purpose of the business of the Hotel is the sale of liquor by retail. It currently offers a number of facilities and services, with gaming being only one component of a diverse operation. The Hotel caters to a broad cross section of leisure demands for the local community, although gaming is not the primary focus or dominant purpose of the Hotel's operation.

The Hotel's business owner has adopted and implemented the AHA (NSW) Gamecare self exclusion programme at the Hotel. In addition, the Hotel complies with the regulatory requirements for the responsible conduct of gaming.

(c) Local Community

The local community for the purposes of the Act and this application has been identified as the Parramatta LGA.

(e) Positive contribution

In addition to the Hotel providing employment, facilities and services to the local community, the Hotel also proposes to provide financial assistance in the amount of \$50,000 to the Parramatta Police & Community Youth Club ("PCYC") situated at 12 Hassell Street, Parramatta. The Parramatta PCYC provides a

variety of relevant services and facilities to the local community which are described and expanded upon in Part 5 of this document. The financial assistance will allow the continuation and expansion of these services and facilities.

(f) Conclusion

It is the Applicant's opinion that the contents of this Class 1 LIA complies with the requirements of the Act and Gaming Machine Regulation 2010 together with the Guidelines issued by the Authority to allow for the increase of the Hotel gaming machine threshold by nine (9) as proposed.

1. Introduction

This Class 1 LIA has been prepared pursuant to Section 36 of the Act to allow the gaming machine threshold of the Hotel to be increased by a low range from ten (10) to nineteen (19).

In accordance with the Act, the Class 1 LIA is required to be approved by the Authority before the gaming machine threshold can be increased. To be approved, the LIA must:

- (a) comply with the requirements of the Act and the Gaming Machine Regulation 2010;
- (b) demonstrate that gambling activities are conducted in a responsible manner; and
- (c) demonstrate in the case of a Class 1 LIA, that the increase in the threshold will provide a positive contribution towards the local community of the Hotel.

On 12 July 2000, an Application was granted by the former Licensing Court of NSW (the "Court") for the Hotel to be removed from its original premises at the Olympic Highway, Bethungra, to the office of John Parsons Hotel Brokers in Orange where it was held in a dormant capacity. A further Application was conditionally granted by the Court for the Hotel to be removed to its current location at 295 Church Street, Parramatta, on 21 November 2001. The Hotel's licence has been exercised at its current location for the past 7 years.

The former Liquor Administration Board (the "Board") granted the Hotel 15 hardship poker machines on 12 May 2003 subject to a condition that required the preparation and approval of a Class 2 Social Impact Assessment ("SIA") before the 15 poker machines were permitted to be installed and operated. A Class 1 SIA was lodged and approved by the former Board on 12 May 2003 (in conjunction with the grant of the hardship machines) to allow four (4) hardship poker machines to be operated at the Hotel. A further Class 1 SIA was approved by the Board on 7 September 2005 to allow ten (10) hardship poker machines to be operated at the Hotel.

It is the intention for the five (5) hardship poker machines which were approved by the Board to now be allocated and installed at the Hotel, together with an additional four (4) transferable poker machine entitlements as a result of the grant of the subject Class 1 LIA Application.

The Hotel was conceived when hotels were awarded gaming machines at no cost. The licence was removed to its current site on the assumption that at least

15 gaming machines would be able to be obtained and operated at these premises. It was for this reason the Board approved the application for the hardship poker machines to be allocated to the licence.

2. Hotel site at Parramatta

The Primary Purpose of the Hotel is the sale of liquor by retail for consumption on or away from the licensed premises. Whilst poker machines are currently operated at the Hotel, the proposed additional gaming machines will not unduly detract from the character of the Hotel or from the enjoyment of persons attending the Hotel otherwise than for the purpose of gambling in accordance with the Hotel's primary purpose.

The Hotel is situated at 295 Church Street, Parramatta within the Parramatta CBD area. **Enclosed** is a plan of the Hotel which discloses its layout and the facilities available.

The Hotel is located over 2 floors and occupies in excess of 400 square metres of internal floor space as disclosed by the plans, thereby allowing the additional poker machines to be attached to the licence and operated at the Hotel.

Whilst the Hotel is approved to trade between the hours of 5.00am to 5.00am the following day, Monday to Saturday inclusive and from 5.00am to 12.00 midnight on Sunday, the Hotel does not normally trade these hours. The Hotel usually trades from 11.00am to 12.00 midnight Sunday to Wednesday inclusive; from 11.00am to 2.00am the following day on Thursday; and from 11.00am to 4.00am the following day on Friday and Saturday. All facilities of the Hotel are open for use by patrons during these hours.

The Hotel, by way of its décor and design, is a unique venue in Parramatta as it celebrates anything and everything associated with sport. The latest and greatest moments in sport are beamed to a multitude of screens throughout the Hotel. The Hotel's walls are covered with personally autographed memorabilia from the elite sporting world. The Hotel's focus is reinforced by the regular programming of guest appearances by sporting personalities and celebrities. This allows the Hotel patrons to personally interact with these guests.

The broad spectrum of sports promoted at the Hotel is reflected in the general patron profile, which indicates minimal gender bias, a diversity of age and social backgrounds drawn from a wide range of suburbs over Sydney with sport being the common factor. The Hotel is designed to attract patrons seeking a place to be with their friends and colleagues to eat, drink and experience entertainment. The Hotel also attracts many tourists due to its location within the Parramatta CBD and due to its unique and special atmosphere.

The Hotel is surrounded by other commercial/business premises in Church Street, Parramatta. This particular area of Church Street is commonly referred to as an "Eat Street" precinct and attracts large numbers of persons as a destination in its own right, to experience the variety of restaurants and cuisines available within this precinct. The presence of the Hotel supplements this attraction.

3. Responsible gambling and harm minimisation

The Hotel is promoted as an all services, modern hotel and attractive to all classes of patron with an emphasis on sport. One element of the services provided (but not promoted outside of the Hotel's licensed area) amongst the many facilities to be available is gaming.

The Hotel has been approved to operate ten (10) poker machines which are installed and operated within a dedicated gaming room. The gaming room complies with Clause 8 of the Gaming Machine Regulation 2010, as it:

- (a) is located in a "bar" area of the Hotel;
- (b) is physically separated from the general bar area by permanent opaque walls and doors;
- (c) patrons are not compelled to pass through the gaming room in order to enter or leave the Hotel or in order to gain access to other parts of the Hotel;
- (d) entry to the gaming room is free of charge;
- (e) the gaming machines are not able to be seen from any place outside the Hotel that is used by the public or to which the public have access to;
- (f) all gaming machines are suitably spaced in order to facilitate their access;
- (g) is supervised at all times by way of electronic means and physical presence by either the licensee or an employee of the Hotel who holds the requisite qualifications;
- (h) has a doorway that provides reasonable access to and from the gaming room to at least one operating bar and sanitary facilities without the need for patrons to leave the Hotel's premises and access a public street when moving from the gaming room into the other areas of the Hotel; and
- (i) is not accessible directly from a public street.

Further, the gaming machines located and operated in the Hotel are conducted in compliance with the relevant provisions of the Act/Regulations in that:

- (a) all staff involved in gaming related duties are the holder of an approved Responsible Conduct of Gambling Certificate. Copies of these certificates are kept at the Hotel and be available for inspection on request;
- (b) the Hotel has arrangements with the AHA to provide gambling counselling;
- (c) the Hotel is a member of the AHA Gamecare self exclusion scheme;
- (d) staff are trained on the requirements of the self exclusion scheme and associated referral process for counselling services;
- (e) all statutory signage are prominently displayed in the gaming room;
- (f) pamphlets warning on problem gambling in a number of languages, the availability of counselling, together with the self exclusion scheme available at the Hotel are displayed within the gaming room;
- (g) the Hotel's ATM is not located in the gaming room;
- (h) the presence of the poker machines in the Hotel is not externally advertised;
- (i) a clock is present and visible to all patrons within the gaming room;
- (j) a limit of \$2,000 on cash payments for winnings is complied with at all times; and,
- (k) the Hotel does not accept the cashing of cheques.

4. Local community

The Hotel is located at 295 Church Street, Parramatta, which is within the Parramatta CBD. The Parramatta CBD is the sixth largest CBD in Australia, is located approximately 23 kilometres west of the Sydney CBD and geographically the centre of the Sydney Metropolitan Area. Parramatta LGA is an established residential, commercial and industrial municipality which includes a diverse range of residential, business and industrial neighbourhoods and precincts.

The Parramatta LGA has an estimated population of 152,000 and is expected to reach 190,000 by 2026. The Parramatta LGA includes of the following (or part thereof) suburbs, Camellia, Dundas, Eastwood, Epping, Ermington, Northmead, Oatlands, Pendle Hill, Rosehill, Rydalmere, Telopea, Toongabbie, Wentworthville, Westmead and Winston Hills. These suburbs have a diverse range of housing standards and community facilities when compared to each other and surrounding LGA's.

The Hotel's patrons which attend during the day are usually employees of businesses within the Parramatta CBD, the result of attending Parramatta for shopping or specifically attracted to the Hotel to use the variety of facilities on offer. After business hours, patrons are a mixture of local residents from the suburbs surrounding Parramatta and within or adjacent to the LGA, business persons who work in Parramatta or persons from outside the Parramatta LGA who are attracted to the Hotel due to the variety of facilities on offer provided by the Hotel.

For the purposes of this LIA, the local community is the whole of the Parramatta LGA. The Hotel has focussed its efforts to obtaining a positive contribution to this identified community.

The Socio-Economic Indexes For Areas (SEIFA) are a measure used to summarise different aspects of the socio-economic conditions for an LGA and provide a form of measure on the relative "disadvantages" when compared to other LGA's. The SEIFA 2006 Index for the Parramatta LGA included within the Social Profile Report dated February 2009 prepared by the Office of Liquor, Gaming and Racing for the Parramatta LGA discloses the Index of Relative Socio-economic Disadvantage is scored at seven (7). The index summarises the economic and social resource information regarding people and households within the LGA. The high score indicates a relatively advantaged position for the LGA.

Similarly, the Index of Relative Socio-economic Advantage and Disadvantage is a general socio-economic index created which uses a measure of relative disadvantage to relative advantage. A low score indicates a lack of advantage in general. Parramatta LGA is scored at nine (9) which clearly discloses a more advantaged situation for the LGA as a whole for this index.

Further, the Index of Education and Occupation reflects the general level of education and occupation related skills of people within the area. A low score indicates relatively lower education and occupation status. Parramatta LGA is scored at nine (9) and clearly discloses greater advantage for the LGA.

On the whole, the overall SEIFA scoring for Parramatta LGA clearly indicates a more advantaged position. It is envisaged that the increase in the gaming machine threshold of the Hotel as proposed by this LIA will not have any detrimental impact on the local community.

5. Positive contribution

The Applicant seeks a low range increase to the Hotel's gaming machine threshold by nine (9). This is to be made up of the five (5) hardship poker machines previously approved but yet to be allocated to the Hotel, together with four (4) transferrable poker machine entitlements which will be acquired and transferred to the Hotel within two (2) years of the grant of the LIA Application.

It is envisaged that the increase of the gaming machine threshold by the number as proposed will result in a positive promotion of the Hotel through the social and economic benefits to the community with a flow on effect to other local business and for Parramatta LGA as a whole.

This will occur through an increase in employment by additional staff being required at the Hotel to cover any additional demand for food, beverages and other customer services on offer. In the current economic climate where unemployment is continuing to rise, an increase in employment is viewed as being beneficial to the local community and Parramatta LGA.

In addition, the Hotel proposes to make a donation of \$50,000 to the Parramatta Police and Community Youth Club (PCYC) situated at 12 Hassell Street, Parramatta. The PCYC is a facility renown for assisting youth throughout New South Wales. This donation will be used by the management of the Parramatta PCYC to implement and continue a number of programs currently conducted at the Club, as well as allowing the upgrading of the Club's facilities, such as the computer room and weights room. Further, the donation will be used to continue a number of educational programs being conducted by and in conjunction with the PCYC.

In particular, the driver education program known as "Road Realities" will be able to be continued and expanded. This program promotes and targets safe and responsible driving by young persons. This program provides a positive step in decreasing the incidences of serious motor vehicle collisions involving youth and young adults together with the associated trauma of such an event on persons in the Parramatta and surrounding LGA.

The continuation of the PCYC and the programs offered are vital to the growth of the local community, particularly to the youth and their associated families. It is expected that this donation will provide a positive benefit not only those youth and families located within the LGA but also to the youth and families located in the surrounding areas that use the PCYC's facilities.

6. Conclusion

It is submitted that the information provided by this Application complies with the Authority's Guidelines for a Class 1 LIA for an increase in the gaming machine threshold for the Hotel by addressing the responsible gambling and harm minimisation measures to be undertaken by the Hotel. It also identifies the local community, provides information to show that a clear and positive contribution will be made if the LIA and threshold increase applications are approved.

As a whole, the operation of the Hotel in conjunction with the additional gaming machines will provide a positive benefit. This will be through additional employment opportunities, whilst most importantly providing a significant

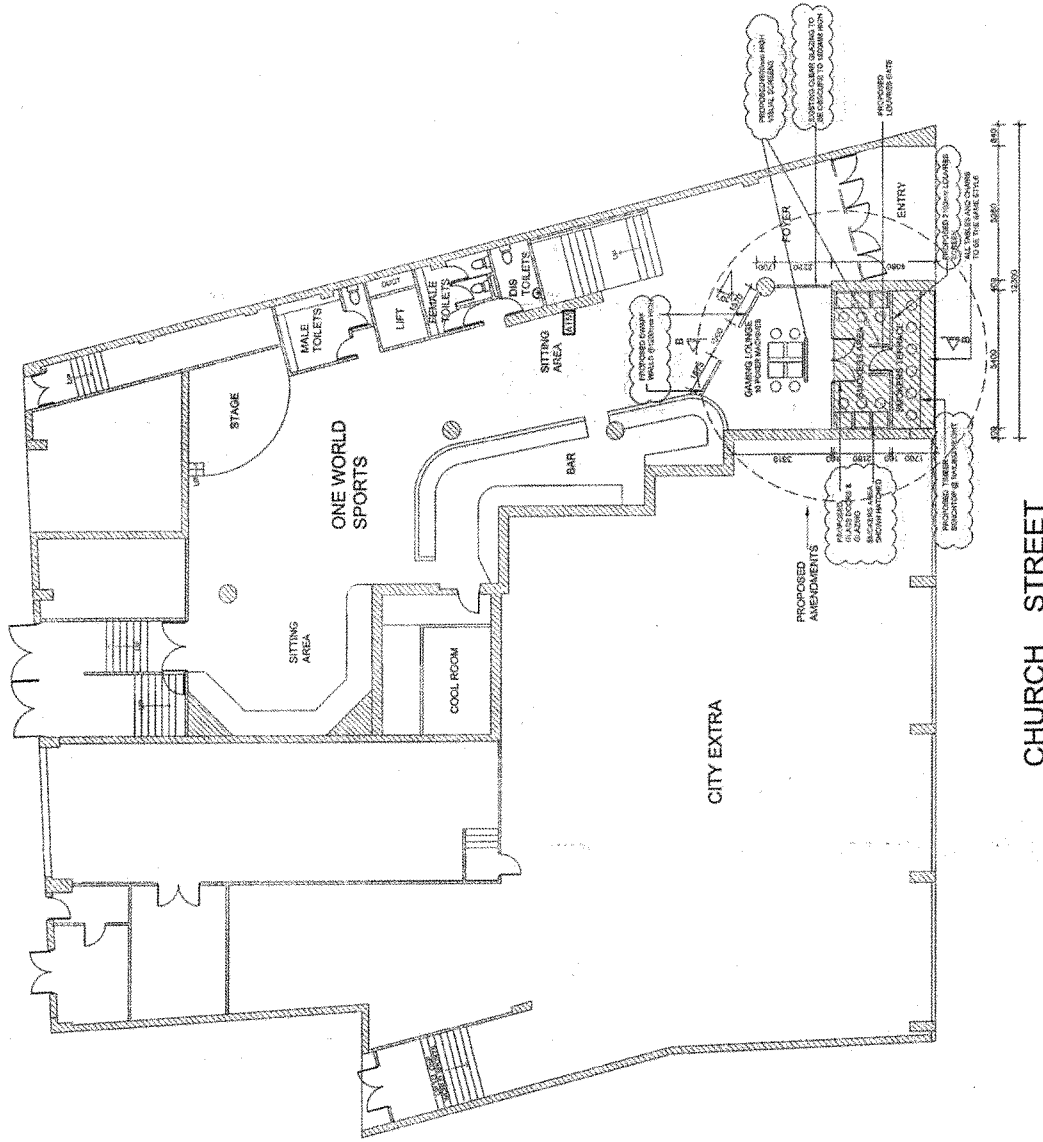
monetary donation to the Parramatta PCYC which will allow the community to benefit from this organisation through the updating and expanding of its facilities and services.

ALL WORKS TO COMPLY WITH BCA & AUSTRALIAN STANDARDS

ALL WORK TO BE CARRIED OUT IN ACCORDANCE WITH THE APPROVED PLANS DATED 30 APRIL 2009 / DA NO: DA / 1388 / 2001 / C

ALL SMOKING AREA IS TO COMPLY WITH THE REQUIREMENTS OF THE SMOKE-FREE ENVIRONMENTAL ACT AND REGULATIONS.

ASH TRAYS ARE TO BE PROVIDED FOR EACH TABLE AND CIGARETTE BUTT RECEPTACLES ARE TO BE ATTACHED TO THE SIDE WALLS OF EACH SMOKERS TERRACE.



PROPOSED GROUND FLOOR PLAN
SCALE: 1:100

<p>NOTES:</p> <p>1. THE CLIENT HAS ADVISED THAT THE PROPOSED DEVELOPMENT IS TO BE CARRIED OUT IN ACCORDANCE WITH THE APPROVED PLANS DATED 30 APRIL 2009 / DA NO: DA / 1388 / 2001 / C.</p> <p>2. THE CLIENT HAS ADVISED THAT THE PROPOSED DEVELOPMENT IS TO BE CARRIED OUT IN ACCORDANCE WITH THE APPROVED PLANS DATED 30 APRIL 2009 / DA NO: DA / 1388 / 2001 / C.</p> <p>3. THE CLIENT HAS ADVISED THAT THE PROPOSED DEVELOPMENT IS TO BE CARRIED OUT IN ACCORDANCE WITH THE APPROVED PLANS DATED 30 APRIL 2009 / DA NO: DA / 1388 / 2001 / C.</p>	<p>THE CLIENT HAS ADVISED THAT THE PROPOSED DEVELOPMENT IS TO BE CARRIED OUT IN ACCORDANCE WITH THE APPROVED PLANS DATED 30 APRIL 2009 / DA NO: DA / 1388 / 2001 / C.</p> <p>THE CLIENT HAS ADVISED THAT THE PROPOSED DEVELOPMENT IS TO BE CARRIED OUT IN ACCORDANCE WITH THE APPROVED PLANS DATED 30 APRIL 2009 / DA NO: DA / 1388 / 2001 / C.</p> <p>THE CLIENT HAS ADVISED THAT THE PROPOSED DEVELOPMENT IS TO BE CARRIED OUT IN ACCORDANCE WITH THE APPROVED PLANS DATED 30 APRIL 2009 / DA NO: DA / 1388 / 2001 / C.</p>	<p>THE CLIENT HAS ADVISED THAT THE PROPOSED DEVELOPMENT IS TO BE CARRIED OUT IN ACCORDANCE WITH THE APPROVED PLANS DATED 30 APRIL 2009 / DA NO: DA / 1388 / 2001 / C.</p> <p>THE CLIENT HAS ADVISED THAT THE PROPOSED DEVELOPMENT IS TO BE CARRIED OUT IN ACCORDANCE WITH THE APPROVED PLANS DATED 30 APRIL 2009 / DA NO: DA / 1388 / 2001 / C.</p> <p>THE CLIENT HAS ADVISED THAT THE PROPOSED DEVELOPMENT IS TO BE CARRIED OUT IN ACCORDANCE WITH THE APPROVED PLANS DATED 30 APRIL 2009 / DA NO: DA / 1388 / 2001 / C.</p>	<p>THE CLIENT HAS ADVISED THAT THE PROPOSED DEVELOPMENT IS TO BE CARRIED OUT IN ACCORDANCE WITH THE APPROVED PLANS DATED 30 APRIL 2009 / DA NO: DA / 1388 / 2001 / C.</p> <p>THE CLIENT HAS ADVISED THAT THE PROPOSED DEVELOPMENT IS TO BE CARRIED OUT IN ACCORDANCE WITH THE APPROVED PLANS DATED 30 APRIL 2009 / DA NO: DA / 1388 / 2001 / C.</p> <p>THE CLIENT HAS ADVISED THAT THE PROPOSED DEVELOPMENT IS TO BE CARRIED OUT IN ACCORDANCE WITH THE APPROVED PLANS DATED 30 APRIL 2009 / DA NO: DA / 1388 / 2001 / C.</p>	<p>THE CLIENT HAS ADVISED THAT THE PROPOSED DEVELOPMENT IS TO BE CARRIED OUT IN ACCORDANCE WITH THE APPROVED PLANS DATED 30 APRIL 2009 / DA NO: DA / 1388 / 2001 / C.</p> <p>THE CLIENT HAS ADVISED THAT THE PROPOSED DEVELOPMENT IS TO BE CARRIED OUT IN ACCORDANCE WITH THE APPROVED PLANS DATED 30 APRIL 2009 / DA NO: DA / 1388 / 2001 / C.</p> <p>THE CLIENT HAS ADVISED THAT THE PROPOSED DEVELOPMENT IS TO BE CARRIED OUT IN ACCORDANCE WITH THE APPROVED PLANS DATED 30 APRIL 2009 / DA NO: DA / 1388 / 2001 / C.</p>	<p>THE CLIENT HAS ADVISED THAT THE PROPOSED DEVELOPMENT IS TO BE CARRIED OUT IN ACCORDANCE WITH THE APPROVED PLANS DATED 30 APRIL 2009 / DA NO: DA / 1388 / 2001 / C.</p> <p>THE CLIENT HAS ADVISED THAT THE PROPOSED DEVELOPMENT IS TO BE CARRIED OUT IN ACCORDANCE WITH THE APPROVED PLANS DATED 30 APRIL 2009 / DA NO: DA / 1388 / 2001 / C.</p> <p>THE CLIENT HAS ADVISED THAT THE PROPOSED DEVELOPMENT IS TO BE CARRIED OUT IN ACCORDANCE WITH THE APPROVED PLANS DATED 30 APRIL 2009 / DA NO: DA / 1388 / 2001 / C.</p>	<p>THE CLIENT HAS ADVISED THAT THE PROPOSED DEVELOPMENT IS TO BE CARRIED OUT IN ACCORDANCE WITH THE APPROVED PLANS DATED 30 APRIL 2009 / DA NO: DA / 1388 / 2001 / C.</p> <p>THE CLIENT HAS ADVISED THAT THE PROPOSED DEVELOPMENT IS TO BE CARRIED OUT IN ACCORDANCE WITH THE APPROVED PLANS DATED 30 APRIL 2009 / DA NO: DA / 1388 / 2001 / C.</p> <p>THE CLIENT HAS ADVISED THAT THE PROPOSED DEVELOPMENT IS TO BE CARRIED OUT IN ACCORDANCE WITH THE APPROVED PLANS DATED 30 APRIL 2009 / DA NO: DA / 1388 / 2001 / C.</p>	<p>THE CLIENT HAS ADVISED THAT THE PROPOSED DEVELOPMENT IS TO BE CARRIED OUT IN ACCORDANCE WITH THE APPROVED PLANS DATED 30 APRIL 2009 / DA NO: DA / 1388 / 2001 / C.</p> <p>THE CLIENT HAS ADVISED THAT THE PROPOSED DEVELOPMENT IS TO BE CARRIED OUT IN ACCORDANCE WITH THE APPROVED PLANS DATED 30 APRIL 2009 / DA NO: DA / 1388 / 2001 / C.</p> <p>THE CLIENT HAS ADVISED THAT THE PROPOSED DEVELOPMENT IS TO BE CARRIED OUT IN ACCORDANCE WITH THE APPROVED PLANS DATED 30 APRIL 2009 / DA NO: DA / 1388 / 2001 / C.</p>	<p>THE CLIENT HAS ADVISED THAT THE PROPOSED DEVELOPMENT IS TO BE CARRIED OUT IN ACCORDANCE WITH THE APPROVED PLANS DATED 30 APRIL 2009 / DA NO: DA / 1388 / 2001 / C.</p> <p>THE CLIENT HAS ADVISED THAT THE PROPOSED DEVELOPMENT IS TO BE CARRIED OUT IN ACCORDANCE WITH THE APPROVED PLANS DATED 30 APRIL 2009 / DA NO: DA / 1388 / 2001 / C.</p> <p>THE CLIENT HAS ADVISED THAT THE PROPOSED DEVELOPMENT IS TO BE CARRIED OUT IN ACCORDANCE WITH THE APPROVED PLANS DATED 30 APRIL 2009 / DA NO: DA / 1388 / 2001 / C.</p>	<p>THE CLIENT HAS ADVISED THAT THE PROPOSED DEVELOPMENT IS TO BE CARRIED OUT IN ACCORDANCE WITH THE APPROVED PLANS DATED 30 APRIL 2009 / DA NO: DA / 1388 / 2001 / C.</p> <p>THE CLIENT HAS ADVISED THAT THE PROPOSED DEVELOPMENT IS TO BE CARRIED OUT IN ACCORDANCE WITH THE APPROVED PLANS DATED 30 APRIL 2009 / DA NO: DA / 1388 / 2001 / C.</p> <p>THE CLIENT HAS ADVISED THAT THE PROPOSED DEVELOPMENT IS TO BE CARRIED OUT IN ACCORDANCE WITH THE APPROVED PLANS DATED 30 APRIL 2009 / DA NO: DA / 1388 / 2001 / C.</p>
--	---	---	---	---	---	---	---	---	---



<p>PROPOSED AMENDMENTS TO EXISTING APPROVAL</p>	<p>PROPOSED GROUND FLOOR PLAN</p>
<p>AT 200 CHURCH STREET, PARAMATTA</p>	<p>PROPOSED GROUND FLOOR PLAN</p>
<p>DA/1388/2001/C</p>	<p>DA/1388/2001/C</p>

When this drawing is used for construction, it is the responsibility of the user to ensure that all dimensions and details are correct and that the drawing is used in accordance with the relevant building codes and standards. The user is advised that this drawing is a preliminary design and is not intended for construction. The user is also advised that the drawing is not a contract and that the user should consult with the relevant authorities before using it for any purpose.

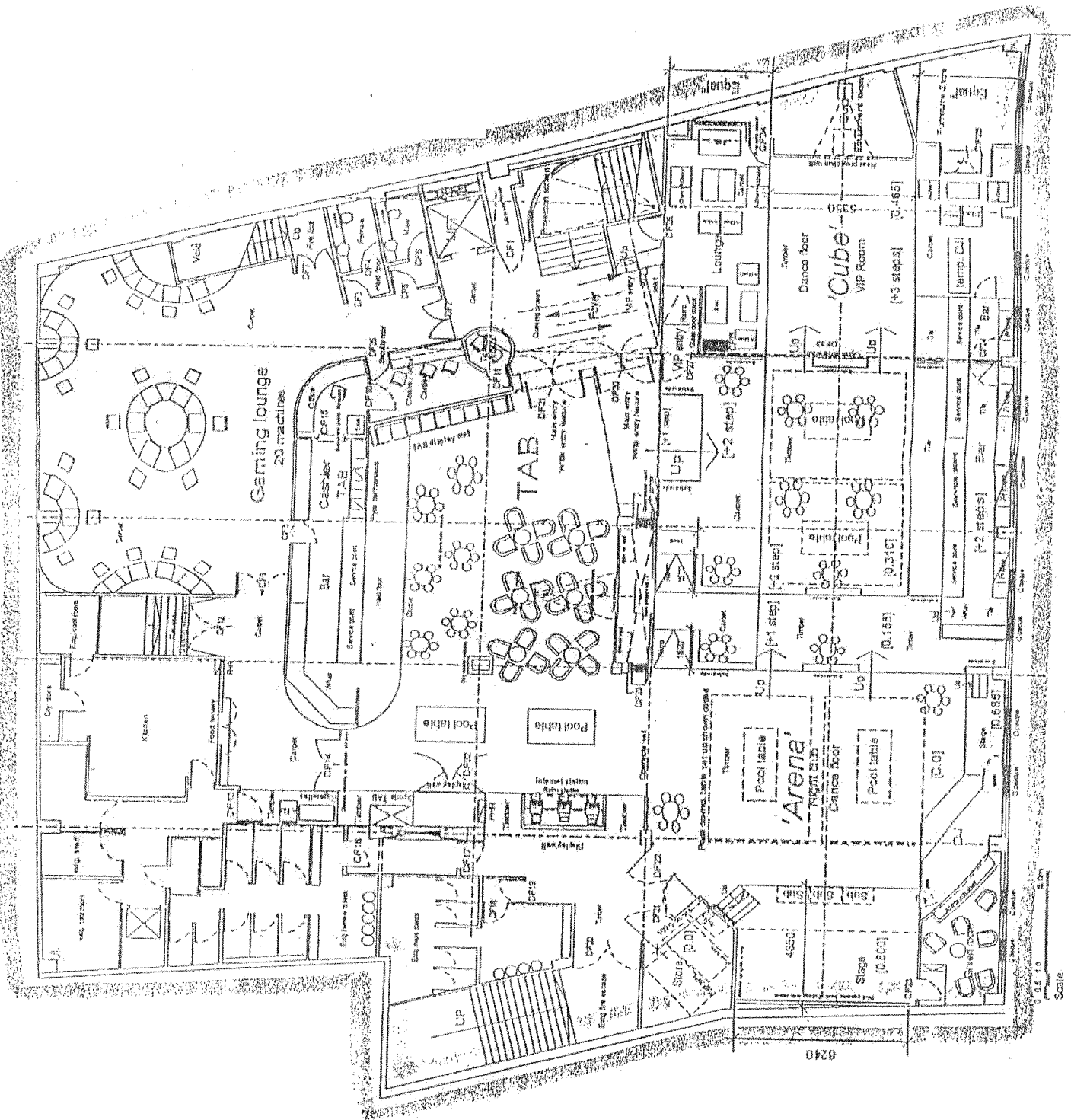
As built revisions
PRELIMINARY
 project
 One World Spot
 Panamatta
 drawing title:
 FF - Option 12
 Layout plan

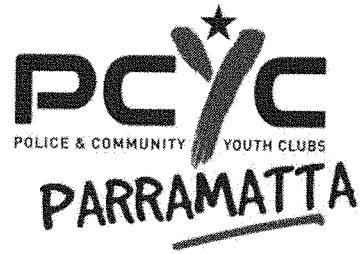
DATE:
 27-02-03
 DRAWN:
 MR
 NUMBER:
 FF-01 A
 First floor



swerve
 DESIGN

Unit 25
 48 Bridge Road
 Sturminster Newton
 Dorset DT9 9JY
 Tel +44 (0)1306 557759
 Fax +44 (0)1306 557986
 WWW.SWERVEDESIGN.CO.UK
 ABA 21 035 379 413





21st July 2011

Re: PCYC Donation

Dear Lauren,

Firstly I would like to thank you and your family for your wonderful gesture in considering the PCYC for a donation.

It was amazing to meet you on Wednesday afternoon and to have the opportunity to show you our awesome club. As you saw there are programs and activities that we offer the local community that add value to individuals, their families and their communities.

The club itself is in need of work to maintain safety and a pleasant appearance, including the computer room with whiteboards, chairs, tables and electronic equipment.

The boxing room needs some work with the boxing bag structure and the way the bags are connected. The Weights room needs a total overhaul of its equipment, including new free weights and weight machines.

The other side of the funding shortage is with programs and activities, as detailed below.

The program that I have a close and personal connection with is the driver education program called Road Realities. As a young guy, who races sports cars and is heavily involved in Sports Car Clubs my passion is motorsport and driver education.

My wish is to be able to provide this education program to all young drivers irrespective if their school or their parents can not afford it.

Awareness and education about poor driver behaviors and actions goes a lot further than just a TV campaign by the RTA or a touch screen computer test.

POLICE & COMMUNITY YOUTH CLUBS NSW LTD
ABN 89 401 152 271 CAN 000 041 056
DONATIONS \$2 AND OVER TAX DEDUCTABLE

PCYC PARRAMATTA
12 Hassall St Parramatta 2150
T 9635 8242 E parramatta@pcycnsw.org.au
F 9635 5923 W www.pcycnsw.org.au/parramatta

With over 30 High Schools within 10 km of here we have a great opportunity to improve the driving awareness and skills of 1000's of local youths.

The other programs we could seek assistance with is our photography program, run by a highly awarded Photographer and supported by Ken Duncan.

The program is offered free to anyone under 18 and we charge adults to help cover cost. We loan 6 Canon Digital SLR cameras to those who do not have their own. With outings and day trips, printing costs and equipment costs unfortunately the program is not self-sustaining.

As you saw on your visit on Wednesday night, we have an amazing club and already offer a great variety of programs and activities to the whole community.

Any assistance or support you can offer will go a long way to continuing the hard work my five staff and 25+ volunteers do for our 2500+ members each year.

If you have any further questions or would like any further information I am more than happy to help.

Kind Regards,

Andrew Best
Club Manager
Parramatta PCYC

POLICE & COMMUNITY YOUTH CLUBS NSW LTD
ABN 89 401 152 271 CAN 000 041 056
DONATIONS \$2 AND OVER TAX DEDUCTABLE

PCYC PARRAMATTA
12 Hassall St Parramatta 2150
T 9635 8242 E parramatta@pcycnsw.org.au
F 9635 5923 W www.pcycnsw.org.au/parramatta