



Level 5
1 Castlereagh Street
SYDNEY NSW 2000

Tel: 9236 8555
Fax: 9236 8599

GAMING MACHINES ACT 2001

CLASS 1 LOCAL IMPACT ASSESSMENT

**FOR AN INCREASE OF TWO
IN THE GAMING MACHINE THRESHOLD**

AT

**PAGEWOOD HOTEL
2 MAROUBRA ROAD
MAROUBRA NSW 2035**

**Prepared for the
Licensee
Paul Michael Irvin**

**February 2011
Ref: KAS:100589**

A. EXECUTIVE SUMMARY

- A1. The Pagewood Hotel (the "Hotel") stands at 2 Maroubra Road Maroubra.
- A2. The Hotel's gaming threshold is 28. The Licensee seeks to increase its Gaming Machine Threshold by 2.
- A3. A Local Impact Assessment ("LIA") must be approved by the Casino, Liquor & Gaming Control (the "Authority") before the Application to increase the Gaming Machine Threshold can be approved. A Class 1 LIA is required – in this instance – because:
- (i) the increase sought is in the low range; and
 - (ii) Randwick City Council is a Band 2 Local Government Area.
- A4. The Hotel is owned by PM Irvin Investments Pty Limited. The Hotel occupies a two storey building. The ground floor, which has dual access, comprises a large bistro dining area, public bar, club bar and gaming room.
- A5. The approved trading hours of the Hotel are 5:00 am to 5:00 am Monday to Saturday (inclusive) and 5:00 am to midnight on Sunday.
- A6. The principal benefit provided by the Hotel to the local community is as an attractive and convenient place for people in the community to eat, drink and socialise.
- A7. The applicant expects positive contributions to the community if the application is granted in relation to increase funding for local community groups, charitable donations, improved facilities for patrons and an increase in employment and additional taxes.
- A8. The applicant submits that:
- (a) this application meets the requirements of the Gaming Machines Act and Regulations;
 - (b) he will continue to conduct gambling activities in a responsible manner; and
 - (c) the increase of 2 gaming machines for the Hotel will provide a positive contribution towards the local community.

B. INFORMATION REQUIRED TO BE PROVIDED BY REGULATIONS 35 AND 37

- B1. The internal floor space of the Hotel is in excess of 1,000 square metres.
- The application relates to an existing hotel and, therefore Clause 35(b) does not apply. Nevertheless there is no school, place of public worship or hospital within 200 metres of the Hotel.
 - The details of the benefit the threshold increase will provide to the local community and details of harm minimisation and responsible gambling measures are discussed in Sections 4 and 5 below.

1. INTRODUCTION

- 1.1. This document is a Local Impact Assessment Class 1 ("LIA") prepared to accompany an application to the Casino Liquor & Gaming Control Authority (the "Authority") for an increase in the Gaming Machine Threshold (the "Threshold") of Pagewood Hotel situated at 2 Maroubra Road Maroubra (the "Hotel").
- 1.2. The increase sought is 2, that is from a threshold of 28 to a threshold of 30. This LIA has been prepared on instructions from Paul Irvin the licensee of the Hotel.
- 1.3. Under the Gaming Machines Act 2001 (the "Act") an LIA is required to be approved by the Authority before an application to increase the Gaming Machines Threshold can be approved.
- 1.4. A Class 1 LIA is required in this instance because:
- (i) the increase sought is in the low range; and
 - (ii) Randwick is a Band 2 Local Government Area.
- 1.5. The Authority can only approve an application for an increase in the threshold of the Hotel if it approves and LIA. To be approved, the LIA must:
- (i) comply with the requirements of the Act and the Gaming Machines Regulations;
 - (ii) demonstrate that gambling activities are conducted in a responsible manner; and
 - (iii) demonstrate in the case of a Class 1 LIA that the increase in the threshold will provide a positive contribution towards the local community of the Hotel.

2. THE HOTEL

- 2.1 The Hotel occupies the ground and first floor of a freestanding masonry building which faces Maroubra Road, Maroubra.
- 2.2 An aerial photograph of the location of the Hotel and its surrounding neighbourhood shops is annexed.
- 2.3 The public area on the ground floor of the Hotel consists of a:
 - (i) large bistro/dining area;
 - (ii) public bar;
 - (iii) club bar; and
 - (iv) gaming room.
- 2.4 The Hotel's approved hours are:
 - (i) 5:00 am to 5:00 am Monday to Saturday (inclusive); and
 - (ii) 5:00 am to midnight on Sunday.
- 2.5 The Hotel occupies in excess of 1,000 square metres internal floor space.
- 2.6 The Hotel's daytime target market is shoppers, white and blue collar workers.
- 2.7 Later in the day that target market also includes mature young adults.
- 2.8 The Hotel provides good quality meals at lunch and dinner and has food available at all times. The Hotel is popular at meal times with white and blue collar workers and shoppers.
- 2.9 A variety of entertainment is provided on the ground floor of the hotel including karaoke, bands and DJ's from time to time.
- 2.10 The Hotel employs 32 people. The Hotel is located primarily in a retail area, although there is significant residential development both to the north, south, east and west of the Hotel.

3. THE LOCAL COMMUNITY

- 3.1 The Applicant considers that only a small proportion of patrons or local workers would live outside a radius of 5 kilometres of the Hotel. Furthermore, the number of tourists visiting the Hotel is limited.
- 3.2 The local community groups which receive sponsorship are also contained within that 5 kilometre radius. Therefore, the applicant considers it is reasonable to assume that the local community relates to that trade area.

3.3 The local community is a mixture of commercial and residential developments. The population living in the local community is diverse in its ethnicity, age, income and occupational status.

4. HARM MINIMISATION AND RESPONSIBLE GAMBLING MEASURES

4.1 In order to provide a responsible gambling environment and to minimise the risk of harm to patrons, the Hotel strictly complies with the policies and guidelines established by the Australian Hotels Association (NSW).

4.2 The Hotel complies with all requirements of the Act and Regulation.

4.3 The Hotel's harm minimisation strategies include:

- (i) All employees involved in gaming related duties hold a responsible conduct of gambling certificate from an approved course provider;
- (ii) Copies of RCG certificates are kept on the premises and are available for inspection by the relevant authorities;
- (iii) No minors are permitted access to gaming areas at the venue;
- (iv) The Hotel maintains strong links with AHA (Centre Care) in relation to the provision of problem gambling counselling;
- (v) The Hotel is a member of the AHA hotel exclusion scheme;
- (vi) Consumer information on the chance of winning maximum prizes and jackpots is made available in the gaming area;
- (vii) Information warning patrons about problem gambling and advising on the availability of counselling services and self exclusion are displayed in the gaming room;
- (viii) The Hotel does not cash cheques;
- (ix) The ATM is not situated in the gaming room;
- (x) The Hotel does not publish any gaming machine advertising and all gambling related signs are situated within the Hotel and cannot be seen from outside the Hotel;
- (xi) Clocks are clearly visible in those parts of the Hotel where approved gaming machines are located;
- (xii) No inducements are offered to gamble at the venue;
- (xiii) The Hotel does not cash third party cheques;

- (xiv) No cash payments over \$2,000.00 are made;
- (xv) All prize winning cheques clearly state 'Prize Winning Cheque – Cashing Rules Apply;
- (xvi) Any unclaimed prizes are processed in accordance with the Act and Regulation; and
- (xvii) The Hotel's ATM does not allow patrons to withdraw cash from a credit account.

The manner in which the Hotel conducts its gaming operations would be unchanged should the Authority grant approval for the increase in the gaming threshold.

5. POSITIVE CONTRIBUTIONS

5.1 *Sponsorship of Local Community Groups*

The Hotel currently sponsors the Pagewood/Botany Soccer Club, a Moore Park Cricket Team; Pathfinders Social Club and the Lions Sporting Club.

With the anticipated additional revenue from the extra gaming machines it is expected that these sponsorships will continue notwithstanding the difficult economic climate.

Also, with the anticipated revenue to be generated by the two additional gaming machines, the applicant will donate to the Prince of Wales Hospital – being the major public hospital serving the local community – an amount of \$10,000.00 for each additional entitlement granted pursuant to the Application.

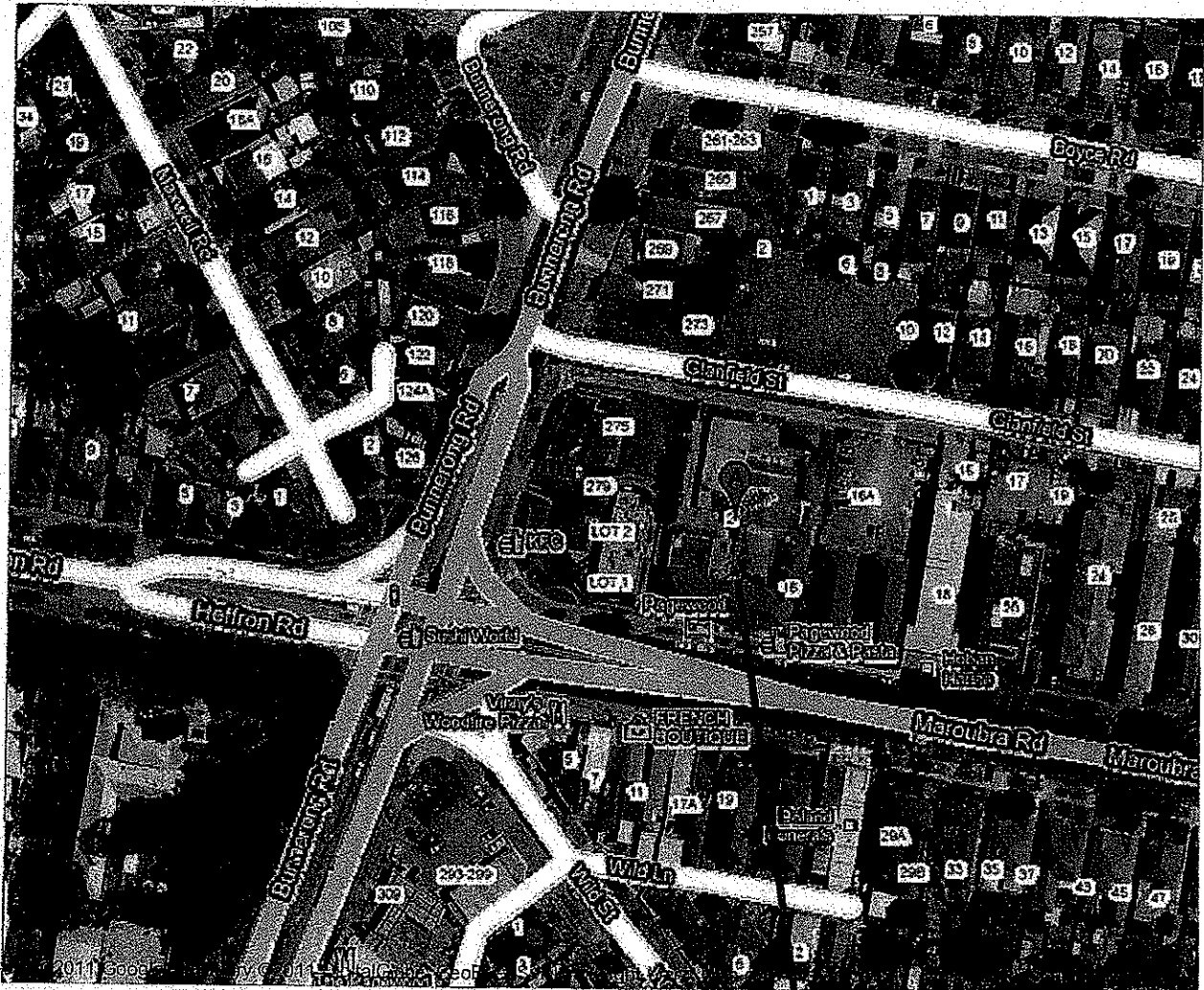
5.2 *Improved Facilities*

Some of the anticipated additional revenue from the increase in poker machines will be used to maintain the Hotel's facilities which have been upgraded recently to provide:

- (i) Family friendly spaces to encourage a more diverse clientele;
- (ii) Discounted food menus;
- (iii) Generally affordable pricing of Hotel services;
- (iv) External and internal modifications to improve the Hotel's aesthetic appeal.

The applicant believes that the upgrading and maintenance of its facilities gives it a wider appeal in the local community. Certainly, the benefits from the additional revenue would not be limited to only those patrons using the gaming machines but would extend to those in the community who frequent the Hotel for its other services.

To see all the details that are visible on the screen, use the Print link next to the map.



Pagewood Hotel
2 Maroubra Road, Pagewood