

Local Impact Assessment Class 1 Application

**Sir Joseph Banks Hotel
1354 Botany Road Botany**

Sir Joseph Banks Hotel (LIQ400105622)

August 2017



A C Comino & Associates

Lawyers

Suite 2, Level 2

155 Castlereagh Street, Sydney

EXECUTIVE SUMMARY

1. INTRODUCTION

This document is a Local Impact Assessment Class 1 to accompany a Threshold increase Application made for the approval of a 'low range' gaming machine threshold increase of four in relation to the Sir Joseph Banks Hotel (the "Hotel") by Nicholas Constantine Savas (the "Applicant"). The Hotel is situated at 1354 Botany Road Botany NSW (the "Venue"), which is located in the City of Bayside Local Government Area (the "LGA") and is a Band 2 LGA.

The Hotel's gaming machine threshold has currently been approved for 23. The owner of the Hotel, Elizabeth Savas, proposes to increase the threshold by a further four gaming machine entitlements/permits for the Hotel's threshold to be increased to a maximum of 27. This LIA examines the characteristics of the Local Community, so the Authority can determine whether the additional gaming machines will provide a positive contribution to the Local Community.

2. RESPONSIBLE GAMBLING MEASURES

Chapter 3 of this Report details the mandatory and additional responsible conduct of gambling measures put in place by the Applicant at the Hotel.

3. LOCAL COMMUNITY

Chapter 4 of this Report details the characteristics of the area potentially affected by the approval of the Threshold Increase Application. City of Bayside LGA is the Local Government Area and has been identified as the Local Community. Chapter 4 provides demographic description of the LGA/Local Community.

4. POSITIVE CONTRIBUTION

Chapter 5 of this Report details the positive contribution that will result from approval of the Threshold Increase Application to the Local and wider Community. The Applicant proposes to donate \$36,000.00 to the Sydney Children's Hospital, Randwick, a specialist facility for children's health caring for children throughout the Local Community, Sydney and New South Wales. The Children's Hospital provide a comprehensive range of services from the most urgent and essential to the most complex and technologically advanced. The donation will be for the acquisition of the equipment detailed in Chapter 6.

5. CONCLUSION

Given the satisfaction of the requirements of the Gaming Machines Act and the associated Regulation through the conduct of gaming machine operation at the Venue in a responsible manner, along with the evidence of substantial position contributions to the Local Community, it is the Applicant's belief that this LIA meets the requirements of the Legislation.

1. INTRODUCTION

This Report is a Class 1 Local Impact Assessment (“LIA”) to accompany a Threshold Increase Application for a Band 2 LGA venue for a “Low-range” increase. The increase will be for four (4) gaming machines to be installed at the Sir Joseph Banks Hotel located at 1354 Botany Road Botany NSW located in the Bayside LGA.

Methodology

- 1.1 In respect of LIAs relating to threshold increase applications, the LIA Guidelines provide that the independent Liquor and Gaming Authority (“the Authority”) can only approve an LIA where the LIA complies with the requirements of the *Gaming Machines Act 2001* and the *Gaming Machines Regulation 2008* (“the Legislation”) and demonstrates that gambling activities will be conducted in a responsible manner.
- 1.2 The Guidelines further state that a Class 1 LIA must demonstrate that the proposed increase gaming machine threshold for the Hotel will provide a positive contribution towards the Local Community in which the Venue is situated.

Applicant Details and History

- 1.3 The Authority’s records indicate the Hotel’s licence was granted on 26 January 1944. The Hotel Licence is currently exercised by Nicholas Constantine Savas who provides a wide range of facilities associated with the type of licence operated at the Venue including accommodation, food, liquor and gaming facilities.
- 1.4 The Hotel’s gaming machine threshold is approved for 23. The Hotel currently has 23 gaming machine entitlements allocated to the licence for the operation of the 23 gaming machines at the Venue. The intention on the grant of this application is for a further four (4) gaming machine entitlements or poker machine permits (or a combination of both) to be procured and transferred to the Hotel’s licence to allow a maximum of 27 gaming machines to be operated at the Hotel.

Current Applicant Services, Facilities

- 1.5 The Venue includes the following facilities:-
 - Public Bar
 - Beer Garden
 - Bistro facilities
 - Bottle shop
 - Gaming room

- Fully equipped commercial kitchen, cool room and other storage areas
- Cocktail Bar
- Accommodation consisting of eleven guest rooms and two bathrooms and store-room on first floor.

1.6 The Hotel's authorised hours are set out in annexure "B" and the current trading hours are :-

Monday to Saturday - 10.00 am until 3.00 am

Sunday - 10.00 am till 10.00 pm

1.7 The internal floor space area of the Hotel is approximately 552 square metres. Attached and Marked "A" are plans of the Hotel that depict the facilities offered at the Venue and confirming the internal floor space measurements.

1.8 Attached and marked "B" is a copy of Premises search for the Venue.

2. PROPOSAL

2.1 The positive contribution put forward in this LIA will not occur without the approval of the threshold Increase Application.

2.2 The Applicant proposes to donate \$36,000.00 to the Sydney Children's Hospital, Randwick ("the Hospital") , a public hospital which although not specifically located within the same LGA of the Hotel, serves the local community, the LGA and wider community of Sydney and New South Wales..

2.3 The donation will be paid over three (3) years in equal instalments and initially used to contribute towards the funding of the purchase by the Anaesthetics Department of the Hospital of a Multifunctional Respiratory Monitor and two specialised Blood Oxygen Monitors.

2.4 This system will be located and used in the Hospital's Paediatric Intensive Care Unit (PICU) and the Neurology and Orthopaedics Ward, as well as the radiology and radiotherapy department. It will also be used by the Royal Hospital for Women's Neonatal Intensive Care Unit (NICU). Further details in relation to this positive contribution are provided later in this report.

2.5 The Applicant proposes to donate a second instalment in 2018 of \$12,000.00 and a third instalment in 2019 towards additional equipment which may be required by the Hospital. These additional donations would further provide positive contributions to the community.

3. RESPONSIBLE GAMBLING MEASURES

- 3.1 The provision of gaming machines is only one aspect of the services and facilities provided at the Hotel.
- 3.2 Gaming is provided within a designated gaming room within the Hotel.
- 3.3 The gaming room complies with Clause 8 of the *Gaming Machine Regulation 2010* in that:-
- (a) It is located in a “bar area” of the Hotel (and is not located in an area in which a minor’s area authorisation or minors functions authorisation is in force).
 - (b) The gaming room is physically separated from the general bar area by permanent opaque walls.
 - (c) Patrons are not compelled to pass through the gaming room in order to enter or leave the Hotel or to gain access to another part of the Hotel.
 - (d) Entry is provided free of charge;
 - (e) The gaming machines are situated so that they cannot be seen from any place outside the Hotel;
 - (f) All machines are suitably spaced to facilitate access;
 - (g) The gaming room is monitored by a gaming room supervisor, as well as by electronic means (CCTV) at all times;
 - (h) There is a door way or space that provides reasonable access to at least one operating bar and one toilet for each gender, without the need for patrons to go out onto the street or outside the Hotel.
- 3.4 Other requirements of the *Gaming Machines Act* and *Gaming Machine Regulation* are complied with, in that:
- (a) All staff involved in gaming duties hold a current and approved responsible conduct of gaming (RCG) interim certificate/competency card. Copies of interim certificates/competency cards are kept by each staff member when working at the Hotel and are available for inspection;
 - (b) The Hotel makes arrangements through AHA for the provision of gambling counselling;
 - (c) The Hotel participates in the AHA gaming self-exclusion scheme and associated referral process;

- (d) Staff are trained in the requirements of the self-exclusion scheme and associated referral process.
- (e) All statutory signage is prominently displayed;
- (f) Pamphlets informing patrons of the dangers of problem gambling and of the availability of counselling and the self-exclusion scheme are displayed within the Hotel in the number of community languages.
- (g) The Hotel's automatic telling machine (ATM) is located outside the gaming room, Patrons not permitted to make withdrawals on credit.
- (h) There are no advertising or promotions of the availability of gaming machines conducted at the Hotel;
- (i) There is a clock present and visible to all patrons within the gaming room;
- (j) The Hotel does not accept third party cheques or the cashing of cheques by patrons;
- (k) There is a limit of \$5,000 cash payment for winnings;
- (l) Minors are not permitted access to the gaming room area;
- (m) Consumer information on the chance of winning maximum prizes and jackpots is made available in the gaming area;
- (n) The Hotel does not publish any gaming machine advertising;
- (o) All gambling-related signs are situated within the Hotel and are not visible from the exterior of the Hotel; and
- (p) Inducements are not offered at the Hotel for the use of the gaming machines.

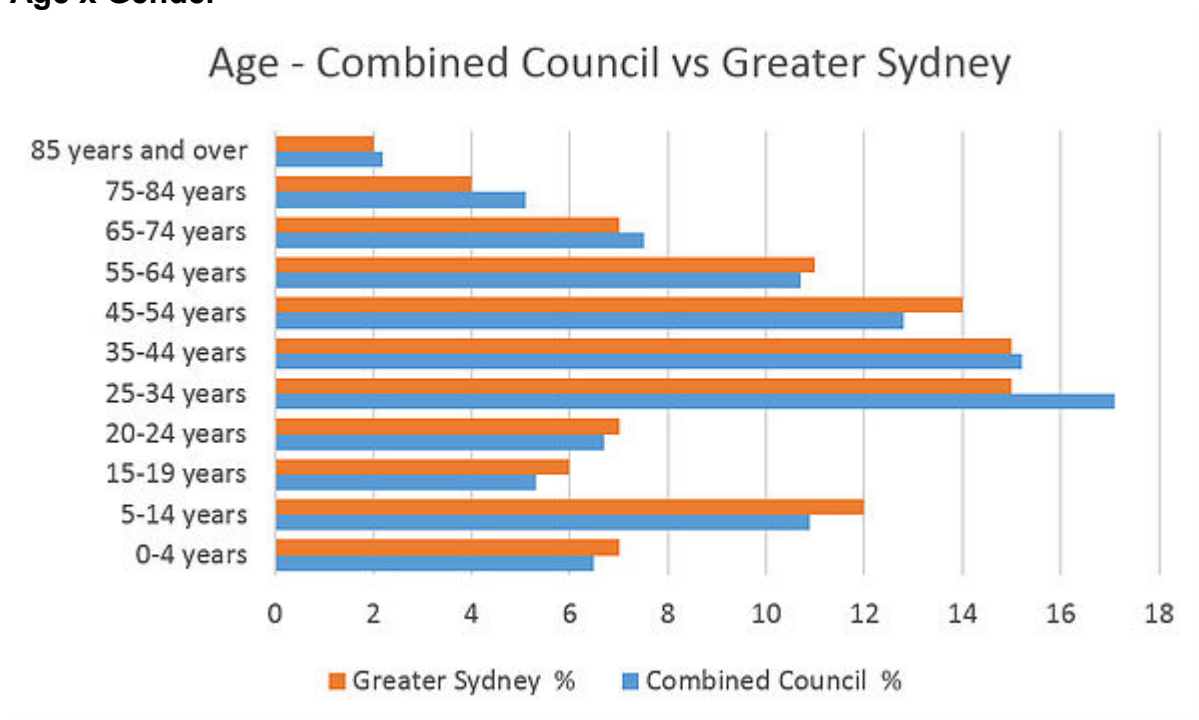
3.5 At all times the gaming room is operated, the Hotel engages a Gaming Room Attendant to be present to provide direct supervision of that area. This enables the Gaming Room Attendant to make early detection of any possible signs of problem gambling being experienced at the Venue.

4 LOCAL COMMUNITY

4.1 For the purposes of this Local Impact Assessment, the Local Community is defined the Bayside Local Government Area ("LGA"). Bayside Council brings together the City of Botany Bay and Rockdale City Councils. It was established by Proclamation on Friday 9 September 2016.

- 4.2 The City covers approximately 55 square kilometres or 4993 hectares and has an estimated population of 160,944.
- 4.3 The Bayside Council area Estimated Resident Population for 2016 is 160,944 with a population density of 32.24 persons per hectare.
- 4.4 The Bayside Council area is located in Sydney's southern and south-eastern suburbs – between 7 and 12 kilometres south of the Sydney CBD.
- 4.5 As a result of the amalgamation for the creation of Bayside LGA occurred less than 12 months ago, the ABS Statistics available for an LGA are required to rely on the figures from 2011 until the 2016 Census results are published.
- 4.6 **The following information is based on the 2011 Census Data (*total population on Census Night 136,694*)**

Age x Gender



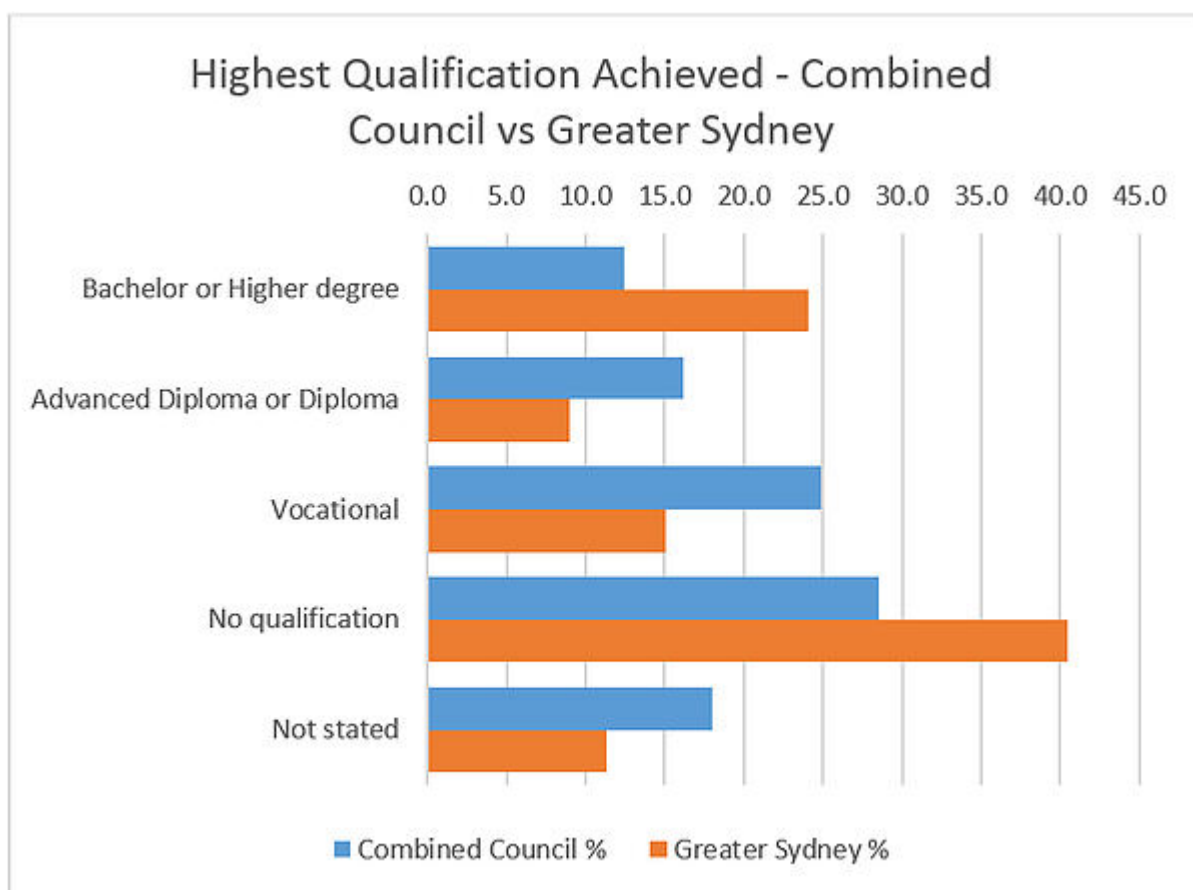
	Males %	Females %	Combined Council %	Greater Sydney %
0-4 years	6.7	6.3	6.5	7
5-14 years	11.4	10.3	10.9	12
15-19 years	5.4	5.2	5.3	6
20-24 years	6.9	6.5	6.7	7
25-34 years	17.5	16.8	17.1	15
35-44 years	15.3	15.0	15.2	15
45-54 years	12.9	12.7	12.8	14
55-64 years	10.5	10.8	10.7	11
65-74 years	7.2	7.8	7.5	7
75-84 years	4.7	5.5	5.1	4
85 years and over	1.5	2.9	2.2	2
Total	100	100	100	100

ASTI

0.6% of the population, compared with 1.2% of the Greater Sydney population.

Indigenous persons:	
Aboriginal	1,129
Torres Strait Islander	40
Both Aboriginal and Torres Strait Islander (b)	12
<i>Total</i>	1,181

Education



Highest Qualification Achieved	Combined Council %	Greater Sydney %
Bachelor or Higher degree	12.4	24.1
Advanced Diploma or Diploma	16.2	9.0
Vocational	24.9	15.1
No qualification	28.6	40.5
Not stated	18.0	11.3
Total persons aged 15+	100	100

Employment Status

Labour Force Status:	Combined Council %	Greater Sydney %
Total labour force participation	59.7	61.7
Not in the labour force	33.6	32.4
Labour force status not stated	6.7	5.9

Employment Status	Combined Council %	Greater Sydney %
Employed, worked full-time	62.0	62.0
Employed, worked part-time	26.4	30.1
Employed, away from work	6.0	2.1
Unemployed, looking for work	5.7	5.8
<i>Total labour force</i>	100	100

Household Type	Combined Council %	Greater Sydney %
<i>Couple - family with no children</i>	<i>23.4</i>	<i>22.6</i>
<i>Couple - family with children</i>	<i>34.6</i>	<i>34.8</i>
<i>One parent family</i>	<i>11.5</i>	<i>10.8</i>
<i>Other family</i>	<i>1.9</i>	<i>1.4</i>
Total family	71.5	69.6
Lone person households	24.0	21.5
Group households	4.5	4.1
Total households	100	100

- 4.5 There are 10,083 couples with young children in the Bayside Council area in 2016, comprising 17% of households.
- 4.6 The LGA and the Local Community have a significant population consisting of children who require or would require at some time specialist paediatric hospital treatment. This population is increasing. 41.9% of households in the LGA have children. There has been an increase of 1,754 households with children from 2011 to 2016 according to census results.
- 4.7 Households with Children require different services and facilities than other household types, and their needs change as both adults and children age. When many families in an area are at the same stage in their individual lifecycles, it creates a suburb lifecycle. Knowing where a suburb is in a cycle of change helps planners make evidence-based decisions about the demand for services both now and in the future.
- 4.8 For Households with Children in the Bayside Council area, life stage is based on the age of children in the household. The age of the parent(s) is not taken into account.
- Young children: Children aged under 15 only
 - Mixed age children: One or more children under 15 and one or more children over 15 (must have 2 or more children)
 - Older children: Children aged 15 and over only

Households with children by life stage

Bayside Council area - Households (Enumerated)	2016			2011			Change
Households with children	Number	%	Greater Sydney %	Number	%	Greater Sydney %	2011 to 2016
Couples with children	18,302	31.7	35.3	16,782	32.7	34.8	+1,520
Couples with young children	10,083	17.5	18.8	8,959	17.5	18.3	+1,124
Couples with mixed-age children	2,192	3.8	4.7	2,144	4.2	4.9	+48
Couples with older children	6,027	10.5	11.8	5,679	11.1	11.6	+348
Single parents with children	5,839	10.1	10.4	5,605	10.9	10.8	+234
Single parents with young children	1,648	2.9	3.3	1,713	3.3	3.7	-65
Single parents with mixed- age children	505	0.9	1.2	562	1.1	1.3	-57
Single parents with older children	3,686	6.4	6.0	3,330	6.5	5.8	+356
Total households with children	24,141	41.9	45.8	22,387	43.7	45.6	+1,754
Total households	57,655	100.0	100.0	51,243	100.0	100.0	+6,412

Source: Australian Bureau of Statistics, [Census of Population and Housing](#) 2011 and 2016.
Compiled and presented by [.id](#), the population experts.
(Enumerated data)

4.9 There is a large population within the LGA who would potentially benefit from the facilities for the Hospital. Further, these figures do not include persons residing outside the LGA who will use the service of the Hospital. The addition of the equipment proposed to be purchased for use in will be of great and significant assistance to the Hospital and the community at large.

4.10 **SEIFA - disadvantage by Local Government Area**

In 2011, the Bayside Council area scored 986.8 on the SEIFA Index of Disadvantage.

4.11 The Bayside Council area SEIFA Index of Disadvantage measures the relative level of socio-economic disadvantage based on a range of Census characteristics. It is a good place to start to get a general view of the relative level of disadvantage in one area compared to others and is used to advocate for an area based on its level of disadvantage.

The index is derived from attributes that reflect disadvantage such as low income, low educational attainment, high unemployment, and jobs in relatively unskilled occupations. When targeting services to disadvantaged communities, it is important to also look at these underlying characteristics as they can differ markedly between areas with similar SEIFA scores and shed light on the type of disadvantage being experienced.

A higher score on the index means a lower level of disadvantage. A lower score on the index means a higher level of disadvantage.

4.12 According to the Bayside Council Index Relative to Socio-economic Advantage and Disadvantage for the area in which the Premises are located had a specific SEIFA Index score of 1029 where the SIA was 1132113 and the total population was 444

4.13 The former Botany LGA (where the Hotel is located) had the following SEIFA scores and deciles from the 2011 ABS Statistics, based on a usual resident population of 39,378

INDICATOR	Botany LGA Score	LGA Decile
IRSEAD	985	7
IRSED	976	5
IER	962	4
IEO	1004	8

- 4.14 The above data indicates that residents of the Bayside LGA are more advantaged than average. The above scores also suggest that the Local Community is not particularly vulnerable to gaming-related harm, with the grant of this application to be unlikely to have a detrimental effect on the Local Community.
- 4.15 The ABS Statistics for 2011 discloses that both the Bayside LGA and Rockdale LGA have a median weekly household income (\$2363 and \$2288 respectively).
- 4.16 The Hospital is situated within the Randwick LGA and is adjacent to the Bayside Council . The Hospital provides health services to both LGAs, Sydney and the state. The Hospital is part of the The Sydney Children's Hospitals Network incorporates The Children's Hospital at Westmead, Sydney Children's Hospital, Randwick, Bear Cottage (Manly), the Newborn and paediatric Emergency Transport Service (NETS), the Pregnancy and Newborn Services Network (PSN) (Randwick) and the Children's Court Clinic (Parramatta). The only other dedicated paediatric hospital is at Westmead a considerable distance for the Local Community in the LGA.

5. POSITIVE CONTRIBUTION

Proposal

- 5.1 The grant of the Application will yield a significant social benefit for the Local Community by the Applicant's contribution of \$36,000.00 to Sydney Children's Hospital, Randwick .
- 5.2 Sydney Children's Hospital, Randwick forms part of The Sydney Children's Hospitals Network and provides a complex and comprehensive range of services across paediatric and adolescent medicine and surgery, treating children with a multitude of conditions, including cancer, trauma, HIV/AIDS, congenital abnormalities, disabilities, heart disease and respiratory disorders.
- 5.3 The Hospital is a hospital for all children. More than 70% of the children cared for come from outside the Hospital's immediate local area and 50% are from rural and regional NSW. As our population continues to grow, the demand for our Hospital's services will increase.

- 5.4 Every year, more than 61,500 seriously ill and injured children from around New South Wales are cared for by the Hospital.
- 5.5 The Hospital is a public hospital operated under the public health care system in Randwick. The Hospital provides approximately 160 beds and is a major tertiary and teaching hospital in the eastern Sydney region.
- 5.6 Sydney Children's Hospital, Randwick is a specialist facility for children's health. It is a paediatric teaching centre and the hub of a network of professionals caring for children throughout Sydney and New South Wales. The Children's Hospital provide a comprehensive range of services from the most urgent and essential to the most complex and technologically advanced.
- 5.7 More than 160 children per day visit the Emergency Department of the Hospital. More than 50% of the patients are under the age of 5 and more than 500 children undergo surgery. The Emergency Department treats more than 744 limb fractures annually.
- 5.8 The Hospital primarily services around residents in the surrounding LGAs including the Bayside LGA and provides services to the surrounding LGAs and provides a wide range of facilities including accident/emergency, critical care, oncology, women's and children's health, mental health, community health.
- 5.9 The Hospital is required to rely on funds allocated by the public authorities who oversee its operation. The proposal to provide the Hospital with funds to allow the acquisition of additional and needed facilities will provide a positive benefit to those members of the Local (and Broader) Community required using the facilities of the Hospital's operating theatres.
- 5.10 Each year more than 6,500 babies and children undergo life-saving or life-changing surgery at Sydney Children's Hospital Randwick. To support young patients during and after surgery the Surgical and Anaesthetics team of the Hospital need a range of essential equipment to ensure their little bodies recover safely from often complex and invasive procedures.
- 5.11 The Sydney Children's Hospital, Randwick Anaesthetics Department provides a comprehensive service to all paediatric surgery as well as radiotherapy, radiology and oncology patients. The team also offer services for sedation, acute pain and patients on the ward requiring insertion of difficult lines.

Description of system to be acquired with initial donation

5.12 Monitoring children's respiratory condition for surgery and complex treatments

The **Multifunctional Respiratory Monitor** is a mobile unit so it can be used in our operating theatres as well as being transported to the wards or other areas as in the Hospital to meet the increasing demand for children requiring anesthesia where adequate respiratory monitoring may not be available. This will include wards such as the Paediatric Intensive Care Unit (PICU) and the Neurology and Orthopaedics Ward as well as radiology and radiotherapy department. The Monitor will help with the growing demand for young patients on the ward who need surgical procedures or complex multiple infusions particularly analgesic infusions.



The Multifunctional Respiratory Monitor will also be used by the Royal Hospital for Women's Neonatal Intensive Care Unit (NICU) to monitor newborns who need surgery in the NICU. Until now all devices have been incompatible with the NICU ventilators but this unit will provide the precise measurements required.



Blood Oxygen Monitors (Pulse Oximeters) measure blood oxygen levels in infants and children through the skin using a special probe, which clips on the finger or toe. It helps to monitor oxygen levels and the respiratory rate of the baby or child to help treatment decisions about oxygen therapy and helps to avoid using a needle to take blood in order to check the oxygen levels that can be distressing for children and their parents.

Benefit to the Local Community

- 5.13 The large number of residents that have the potential to use the Hospital's services; from both Bayside and surrounding LGA's will be benefited by the proposed donation on the grant of this application.
- 5.14 The first instalment of the donation will be put towards the funding of the acquisition of a Multifunctional Respiratory Monitor and two Blood Oxygen Monitors used in the Hospital for anaesthesia for the young patients. The acquisition of this system will be of a significant and substantial benefit in assist staff providing the best available patient care within the Hospital's operating theatre by performing life-saving procedures in support of the patient care provided by the Hospital.
- 5.15 The details provided by the Hospital regarding the proposed donation are attached and marked "C".
- 5.16 The Applicant and the Hotel intends to contribute a further two donations for specific additional equipment or towards additional equipment which may be required by the Hospital for the benefit of the children of the community.

6. CONCLUSION

- 6.1 This LIA, pursuant to *Section 37 of the Gaming Machines Amendment Regulation 2009*, defines the Applicant's Local Community, details the positive contributions that the Applicant will provide to the Local Community if the Threshold Increase Application is approved, and details the harm minimisation and responsible gambling measures that are in place at the Venue.
- 6.2 The Applicant operates gaming at the Venue in compliance with mandated Legislative requirements and operates a best-practice style of interventions and procedures. The Applicant enforces this strict approach by implementing the Bet Safe self-exclusion program.
- 6.3 The positive contribution put forward in this LIA will not occur without the approval of the Threshold Increase Application. That positive contribution of \$36,000.00 donation to Sydney Children's Hospital will initially fund of the acquisition of a Multifunctional Respiratory Monitor and two Blood Oxygen Monitors for use in the Hospital as required and within the Hospital's Paediatric Intensive Care Unit (PICU) and the Neurology and Orthopaedics Ward as well radiology and radiotherapy department. It would also be used by the Royal Hospital for Women's Neonatal Intensive Care Unit (NICU), this Hospital providing essential services to the local community and the community at large.
- 6.4 It is therefore provided that the test as set out in the Guideline and Legislation is met and the Applicant submits that the Threshold increase Application should be approved.

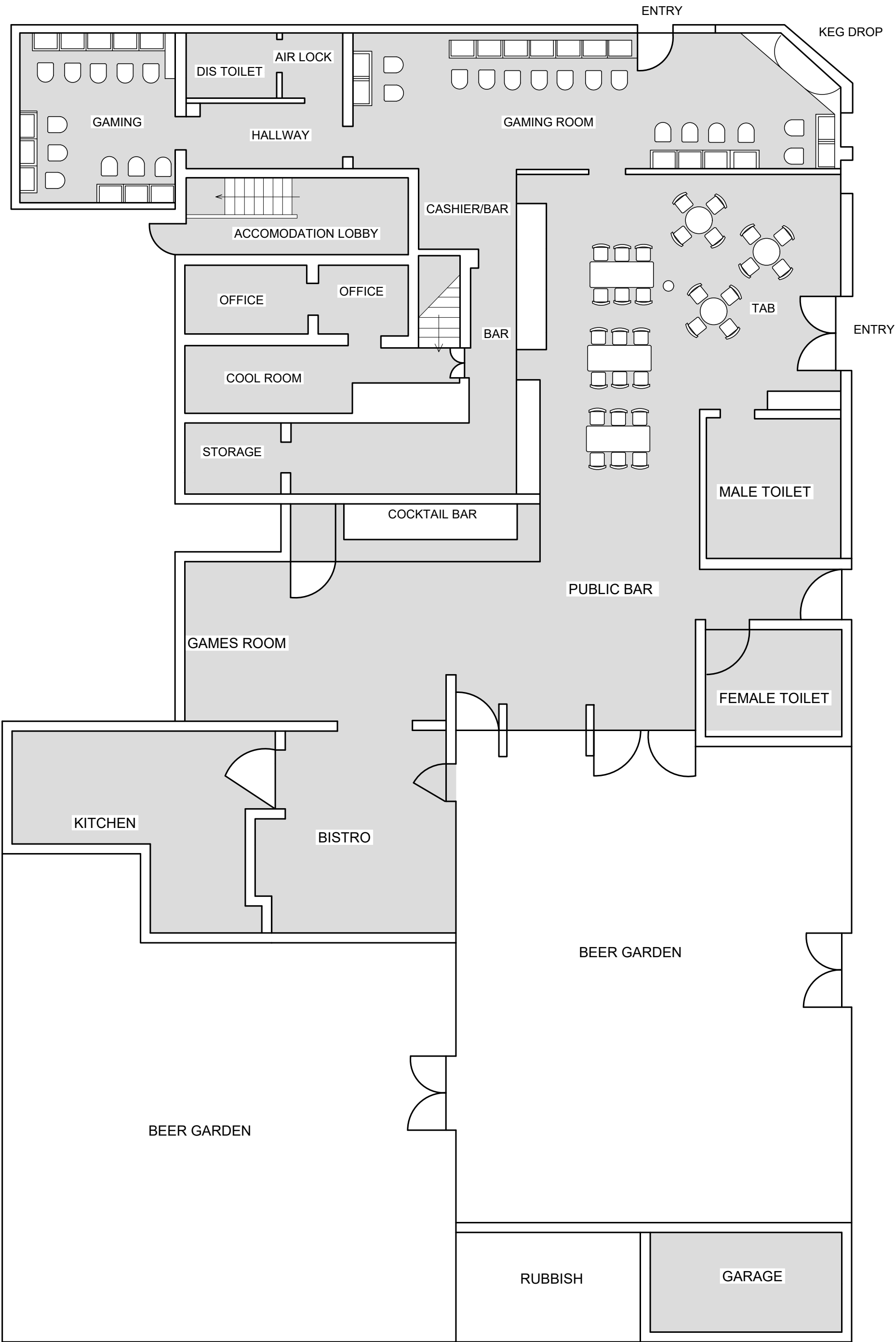
Signed:

A handwritten signature in black ink, appearing to read 'Nicholas Constantine Savas', with a horizontal line drawn through the middle of the signature.

Nicholas Constantine Savas

Annexure “A”

Sir Joseph Banks Hotel Layout Plan



Annexure “B”

Sir Joseph Banks Hotel Key licence details



Key licence details – premises file service

Licence number: LIQH400105622
Licence name: Sir Joseph Banks Hotel
Licence type: Liquor - hotel licence
Licence sub-type: Full hotel
Licence status: Current
Duration: Unlimited duration
Licence start date: 26/01/1944
Licence expiry date:

Licensee

Title: Mr
Surname: Savas
Given name: Nicholas
Middle name: Constantine
Website:

[REDACTED] [REDACTED]
[REDACTED] [REDACTED] [REDACTED]
[REDACTED] [REDACTED]
Start date: 25/01/2017

Contact Person

Title: Mr
Surname: Savas
Given name: Nicholas
Middle name: Constantine

[REDACTED] [REDACTED]
[REDACTED] [REDACTED]
[REDACTED] [REDACTED] [REDACTED]
[REDACTED] [REDACTED] [REDACTED]
[REDACTED] [REDACTED]
[REDACTED] [REDACTED]
[REDACTED] [REDACTED]
[REDACTED] [REDACTED]
[REDACTED] [REDACTED]
Start date: 25/01/2017

Premises

Address: 1354 Botany Rd BOTANY NSW 2019
Phone number: 02 9666 3460 **Fax number:**
Email address:
Website: www.sjbhotel.com.au
LGA: Bayside Council
ABS SLA:
Start date: 26/01/1944

Authorisations

Name: Extended trading authorisation **Start date:** 01/07/2008
Name: Minors area authorisation **Start date:** 01/07/2008

Trading Hours**Consumption on premises - Area: Public & Saloon Bars.**

Day	Start Time	End Time	Start Date	End Date
Monday	05:00 AM	- 03:00 AM	01/07/2008	
Tuesday	05:00 AM	- 03:00 AM	01/07/2008	
Wednesday	05:00 AM	- 03:00 AM	01/07/2008	
Thursday	05:00 AM	- 03:00 AM	01/07/2008	
Friday	05:00 AM	- 03:00 AM	01/07/2008	
Saturday	05:00 AM	- 03:00 AM	01/07/2008	
Sunday	10:00 AM	- 10:00 PM	01/07/2008	

Consumption on premises - Other areas within licensed premises.

Day	Start Time	End Time	Start Date	End Date
Monday	05:00 AM	- 12:00 midnight	01/07/2008	
Tuesday	05:00 AM	- 12:00 midnight	01/07/2008	
Wednesday	05:00 AM	- 12:00 midnight	01/07/2008	
Thursday	05:00 AM	- 12:00 midnight	01/07/2008	
Saturday	05:00 AM	- 12:00 midnight	01/07/2008	
Sunday	10:00 AM	- 10:00 PM	01/07/2008	

Take away sales

Monday to Saturday 05:00 AM - 11:00 PM
 Sunday 10:00 AM - 10:00 PM
 Good Friday Not permitted
 Christmas Day Not permitted
 December 31st Normal trading

Conditions

Licence conditions imposed by the Liquor Act and Regulation apply. To view a copy of these conditions, go to www.liquorandgaming.justice.nsw.gov.au.

Additional licence conditions.

Condition type:	Condition	Condition source:	Liquor Act 2007
Reference:	101		
Condition:	Consumption on premises		
	Good Friday	12:00 noon - 10:00 PM	
	Christmas Day	12:00 noon - 10:00 PM	(liquor can only be served with or ancillary to a meal in a dining area)
	December 31st	Normal opening time until normal closing time or 2:00 AM on New Year's Day, whichever is the later	
	Note: Trading is also allowed after midnight into the early morning of Good Friday and Christmas Day if authorised by an extended trading authorisation. Trading must cease at the time specified under the authorisation. The latest time that can be specified is 5:00 AM.		
Start date:	28/10/2009		

Condition type:	Condition	Condition source:	Authority
Applies to:	Minors area authorisation		
Reference:	300		
Condition:	Public Bar, Lounge Bar, Bistro, Beer Garden, Kitchen & Amenities.		
Start date:	01/07/2008		

Business owner

Title:

Surname:	Savas
Given name:	Constantine
Middle name:	Nicholas
Start date:	19/01/1981

Premises owner

Title:

Surname:	Savas
Given name:	Constantine
Middle name:	Nicholas
Start date:	15/06/1990

Gaming machine details

LGA classification:	Metropolitan
LGA band:	2
Gaming machine threshold:	23
Gaming machine entitlements:	23
Poker machine permits:	0
Maximum gaming machine authorisations allowed:	23

There are no current quotas for this licence

Gaming machine shutdown hours

Day	Start Time	End Time
Monday	04:00 AM	- 10:00 AM
Tuesday	04:00 AM	- 10:00 AM
Wednesday	04:00 AM	- 10:00 AM
Thursday	04:00 AM	- 10:00 AM
Friday	04:00 AM	- 10:00 AM
Saturday	04:00 AM	- 10:00 AM
Sunday	04:00 AM	- 10:00 AM
Public holiday	04:00 AM	- 10:00 AM

Application and amendment history (since 1/7/2008)

Transaction Type	Transaction	Status	Effective Date	Reference
Application:	LIQH400105622			
Amendment:	1-1429614506	Approved	27/03/2012	GMCNVQ
Amendment:	1-2493581576	Approved	15/05/2014	GMA040
Periodic Return:	1-3121041104	Approved	28/05/2015	PLS2015
GME Transfer:	1-3288409181	Approved	14/07/2015	GAMTEMP
Periodic Return:	1-4303573775	Approved	02/06/2016	PLS2016
GMT Increase:	1-4988669196	Approved	13/10/2016	GMXH00
GME Transfer:	1-4988669320	Approved	13/10/2016	GMXH00
Amendment:	1-5526288257	Approved	25/01/2017	AM0320
Periodic Return:	1-5644696368	Approved	18/05/2017	PLS2017
Amendment:	1-6190105884	Approved	20/07/2017	GMA040

This licence is subject to a risk-based fee, payable annually. If the fee is not paid on time, the licence will be suspended or cancelled. Visit <https://www.onegov.nsw.gov.au/licencecheck> to find out the status of the licence.

Annexure “C”

Sir Joseph Banks Hotel

Funding options for Sydney Children’s Hospital, Randwick

Sir Joseph Banks Hotel

Funding options for Sydney Children's Hospital, Randwick

Anaesthetics Department

Needed: Multifunctional Respiratory Monitor x 1, Blood Oxygen Monitors x 2

Funding need: TOTAL: \$11,968 (Respiratory Monitor \$4,905 + 2 Blood Oxygen Monitors \$7,063)

Each year more than 6,500 babies and children undergo life-saving or life-changing surgery at Sydney Children's Hospital Randwick. To support our young patients during and after surgery our Surgical and Anaesthetics team need a range of essential equipment to ensure their little bodies recover safely from often complex and invasive procedures.

The Sydney Children's Hospital, Randwick Anaesthetics Department provides a comprehensive service to all paediatric surgery as well as radiotherapy, radiology and oncology patients. The team also offer services for sedation, acute pain and patients on the ward requiring insertion of difficult lines.

Monitoring children's respiratory condition for surgery and complex treatments

The **Multifunctional Respiratory Monitor** is a mobile unit so it can be used in our operating theatres as well as being transported to the wards or other areas in the Hospital to meet the increasing demand for children requiring anaesthesia where adequate respiratory monitoring

may not be available. This will include wards such as the Paediatric Intensive Care Unit (PICU) and the Neurology and Orthopaedics Ward as well radiology and radiotherapy department. The Monitor will help with the growing demand for young patients on the ward who need surgical procedures or complex multiple infusions particularly analgesic infusions.



The Multifunctional Respiratory Monitor will also be used by the Royal Hospital for Women's Neonatal Intensive Care Unit (NICU) to monitor newborns who need surgery in the NICU. Until now all devices have been incompatible with the NICU ventilators but this unit will provide the precise measurements required.





Blood Oxygen Monitors (Pulse Oximeters) measure blood oxygen levels in infants and children through the skin using a special probe, which clips on the finger or toe. It helps to monitor oxygen levels and the respiratory rate of the baby or child to help treatment decisions about oxygen therapy and helps to avoid using a needle to take blood in order to check the oxygen levels that can be distressing for children and their parents.